



KANE COUNTY REGIONAL OFFICE OF EDUCATION

ANNUAL REPORT
JULY 1, 2003—JUNE 30, 2004



Dr. Clem Mejia, Regional Superintendent
Julie Vallejo, Associate Superintendent

210 South Sixth Street
Geneva, Illinois 60134

Phone: 630-232-5955
Fax: 630-208-5115
www.kaneroe.org

TABLE OF CONTENTS



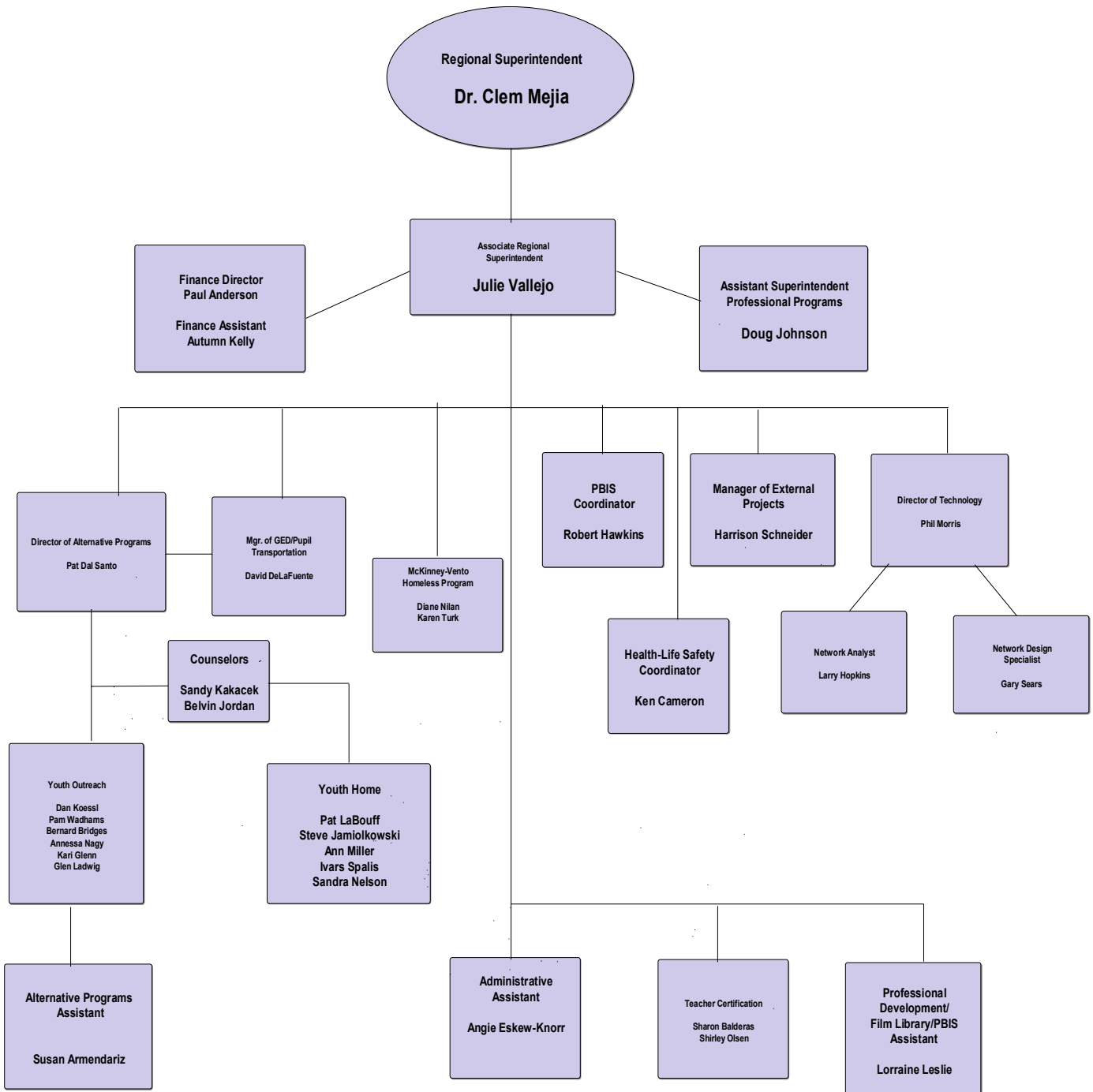
Mission Statement, Regional Office of Education Staff.....	1
Legal Reference for Annual Report.....	2
Representative Activities and Duties of the Regional Office Staff.....	2
Regional Office of Education County Budget.....	2
Institute Fund Report.....	3
Kane County Educator of the Year Awards.....	3
Kane County Regional Board of Trustees.....	4
Kane County Visual Media Coop.....	4
School Safety and Security.....	4
Juvenile Justice Center.....	4
General Educational Development (G.E.D.).....	5
Home-Schooling.....	5
Dropout Intervention Project.....	5
Positive Behavior Interventions and Support (PBIS).....	5
Masters/Doctorate & Counselors' Cohort.....	5
Kane County Outreach Program.....	6
Regional Safe Schools Program.....	7
System of Support.....	7
Project REACH—Area One.....	7
Reading First.....	7
Gifted Education.....	8
Standards-Aligned Classroom Project (SAC).....	8
Illinois Administrator's Academy.....	8
Kane County Human Resources Consortium (KCHRC).....	9
Career Awareness & Development & ETC.....	9
Career Cruising.....	9
Business Partners Initiative.....	9
Professional Development.....	10, 11
Technical Assistance to Schools.....	11
Kane County Government Computer Courses.....	11
Enhancing Education Through Technology Grant.....	11
Learning Technology Services.....	12
Area One West Learning Technology Center.....	12
Networks.....	13
Transportation Analysis.....	13
Assessed Valuation Per ADA.....	14
Classroom Buildings.....	14
Life Safety.....	15
Construction & Occupancy Permits.....	15
Certified Personnel.....	16
Enrollment—Public and Non-Public Schools.....	17
Federal & State Revenue.....	18
Revenue & Expenditure Analysis.....	19, 20



Our Mission is to provide leadership in the learning community by:

- Developing Educational Resources
- Facilitating Learning
- Collaborating with all Educational Partners

ORGANIZATION CHART





Legal Reference for Annual Report

This Annual Report is designed in part to meet the provisions of Chapter 105, Article 3, Section 5/3-6 and Section 5/3-15.8 of the School Code of Illinois. The report of schools visited and meetings attended as required by Section 5/3-5 is provided quarterly to the Public Service Committee of the Kane County Board. In addition, as established in Chapter 105, Article 2, Section 5/2-3.62 in the School Code of Illinois, the Regional Office of Education shall provide services to support administrators and teachers in the planning, implementation, and evaluation of education for gifted children, computer technology education, mathematics, science, and reading. The Regional Office of Education may provide training, technical assistance, coordination and planning in other program areas such as school improvement, career guidance, alcohol/drug education and prevention, and alternative education.

Representative Activities and Duties of the Regional Staff

Processed approximately 1,804 new applications for teaching certificates and registered over 5,126 certificates.

Visited each of the 158 public school buildings in the Region to monitor life/safety requirements.

Appointed instructors for school bus driver classes, held 11 initial bus training classes for 99 new drivers and 39 bus refresher classes for 1,105 drivers. Distributed information on bus safety by meeting with School District Transportation Directors.

Assisted the State Board of Education during its recognition visits of Kane County School Districts. Provided school officials and the general public with information regarding area school districts and the School Code of Illinois.

Reviewed and approved, or returned for correction, a multitude of State Board of Education reports and applications filed by local school districts.

Regional Superintendent Mejia served on the following committees: Phi Delta Kappa; Kane County Child Advocacy Board; Kane County Workforce Development Board; Illinois Association of Regional School Superintendents; Past President for Illinois Association of County Officials; Adjunct Faculty at Aurora University and Past Board Chairman for the Association for Individual Development.

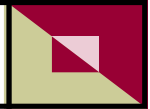
Associate Superintendent Vallejo served on the following committees: Advisory Board Member of State Safe Schools; Member of Council for Exceptional Children; Member of the Illinois Association of Regional School Superintendents; Member of the Community Crisis Team Committee; Member of Superintendents' Roundtable; Chairman of Kane County Safe Schools Committee; Member of the Northern Illinois Chapter of Phi Delta Kappa; State Scholarship Committee and the Adjunct Faculty at Aurora University.

Budget—County Portion Only

Some local funds are provided by Kane County to support the operation of the Kane County Regional Office of Education. The following budget and expenditure figures are based on Kane County's fiscal year which runs from December 1st through November 30th. This does not include other funds that are received from other governmental agencies, consortiums, partnerships and State and Federal sources.

KANE COUNTY BUDGET

	Budget	FY-02 Actual	Pct	Budget	FY-03 Actual	Pct	FY-04 Budget
Salaries	224,328	222,469	99.2%	211,093	222,769	105.5%	226,419
Operations & Other	19,485	18,658	95.8%	19,485	9,180	47.1%	19,485
Health & Dental	45,393	53,110	117.0%	58,167	68,535	117.8%	75,444
TOTAL	289,206	294,237	101.7%	288,745	300,484	104.1%	321,348



Institute Fund Report

The majority of expenditures from the Institute Fund were used to assist local school districts in providing professional development programs to their staff by paying all or part of the costs associated with the Kane County-Wide February 27, 2004 Institute Day and their in-service programs. A total of \$65,993.32 was expended from July 1, 2003 to June 30, 2004 for teacher training programs and workshops. Some of the programs included are Administrators Summer Workshop, the Library Selection Workshop and Kane County Educator of the Year. The Advisory Board Members are Dr. Cindy Miller, Chuck Gilmore, Linda Voris, Jan Thietje, John Duffy, Deborah Schmalholz and Guila G. Zeigler.

INSTITUTE FUND FINANCIAL REPORT JULY 1, 2003 THROUGH JUNE 30, 2004

BEGINNING FUND BALANCE, JULY 1, 2003 **416,674.40**

RECEIPTS

1-YEAR REGISTRATIONS	5,735.00
4-YEAR REGISTRATIONS	25,500.00
5-YEAR REGISTRATIONS	6,775.00
6-YEAR REGISTRATIONS	870.00
REGISTRATION RENEWALS-PAST YEARS	1,460.00
DUPLICATE CERTIFICATES	1,768.00
TEACHER CERT APPLICATION	54,120.00
DUE TO ISBE - TEACHER CERT APPL	(54,850.00)
INTEREST	1,969.42
PDK MINI GRANT	500.00
EDUCATOR OF THE YEAR	19,240.00
REFUNDS & ADJUSTMENTS	(173.00)

TOTAL RECEIPTS **62,914.42**

DISBURSEMENTS

INSTITUTE DAY	17,884.28
PROF SERV - INSTRUCTIONAL	1,475.00
OTHER PROF & TECHNICAL SERVICES	2,784.60
OTHER PURCHASED SERVICES	107.07
SUPPLIES & SERVICES	143.84
DUES & FEES	8.00
MINI GRANTS	3,051.69
PDK MINI GRANT	1,000.00
EDUCATOR OF THE YEAR	38,138.84
SPELLING BEE	1,400.00

TOTAL DISBURSEMENTS **65,993.32**

ENDING FUND BALANCE, JUNE 30, 2004 **413,595.50**

Kane County Educator of the Year Awards

The Twenty-ninth Annual Educator of the Year Awards Dinner was held at Pheasant Run Resort in St. Charles on April 30, 2004. The dinner honored 37 distinguished educators with plaques of recognition. Those who received awards of distinction were:

<u>Award Given</u>	<u>Name</u>	<u>District</u>
Educator of the Year	Luis A. Cabrera	District U46
Regional Superintendent Award	John Robert Heath	District 101
R. B. Mades Associate Educator of the Year	Alice E. Nelson	District 303
Elementary Educator of the Year	Linda Odom	District 304
Elementary Educator of the Year	Susan B. Unruh	District 300
J.L. Hanson Middle School Educator of the Year	Erik Swenson	District 303
D.L. Hoefft High School Educator of the Year	Dennis Maher	District 300
Administrator of the Year	Robert B. Hansen	District 300
Private/Parochial Award	Terry Herren Roate	Mooseheart
Support Staff Award	Judy Krohn	District 300



Kane County Regional Board of Trustees

The Regional Board of School Trustees is an elected body with the sole responsibility of action on detachment/annexation petitions regarding boundary changes between school districts in the region. The board meets on the first Monday of January, April, July and October. The President may call special meetings. Meetings may be canceled due to lack of agenda items. Dr. Clem Mejia, Regional Superintendent, is the ex-officio Secretary for the Board of Trustees. The members of the Regional Board of School Trustees are:

	<u>Term Expires</u>		<u>Term Expires</u>
Kay Clancy, President St. Charles Township	2007	Lyle Oncken Sugar Grove Township	2007
Dave Henderson Dundee Township	2007	G. Michael Stoffa Blackberry Township	2005
Doug Jones Aurora Township	2009	Jon Zahm Virgil Township	2009
Barbara Vondrak Geneva Township	2005		

Kane County Visual Media Coop

The Kane County Visual Media Cooperative was established in 1938 to serve the teachers and staff in our region by providing educational 16mm films, videotapes and laserdiscs for their classroom use. The cooperative contains over 2,000 educational titles.

The cooperative is open to all public and non-public institutions in Kane County. The Regional Office of Education serves as the administrative agent for the cooperative. Funding for the cooperative is obtained by fees paid by districts and institutions.

For the 2003-2004 school term, the cost of renting a film, videotape or laserdisc was \$2.96 per week. This past year, the cooperative received over 1,200 requests.

For questions concerning this program, contact Phil Morris (pmorris@kane.k12.il.us)

School Safety and Security

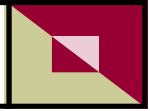
In the past several years school security and student safety have become major concerns across the nation as well as in Illinois. Kane County ROE #31 has sponsored numerous related programs that have involved all nine school districts within its jurisdiction. Collaborative program planning continues in this important area.

- Crisis Management
- Proactive School Security Planning
- Sticks & Stones Bullying Prevention
- School Searches & Seizures & Safety Legal Workshops
- PBIS (Positive Behavior Interventions and Supports)
- Verbal Judo
- How To Cope With A Bully (Gum In My Hair)

Participants: More than 350

Juvenile Justice Center

An agreement between the Regional Office of Education, St. Charles School District and the Chief Judge assures that the Regional Office of Education is responsible for the educational program for the students at the Juvenile Justice Center. The teachers provide daily instruction to meet the educational needs of the students in a year round program. During this year, 702 students received educational services from the Juvenile Justice Center teachers.



General Educational Development (G.E.D.)

The Regional Superintendent is delegated with the responsibility of administering The G.E.D. testing program in accordance with the Illinois School Code. This program allows those who are 18 years of age, whose high school class has graduated and have been out of the school system for one year to secure a High School Equivalency Certificate upon completion and passing all tests.

Testing centers have been established in Kane County at Waubensee Community College in Sugar Grove and at the Regional Office of Education in Geneva. The tests require two days and are administered on consecutive Saturdays. The Kane County Regional Office of Education has become an official scoring center and has installed equipment for scanning and scoring all tests except the essay portion.

A \$35.00 fee is charged to cover the cost of tests, administration of tests, grading, and for the certificate.

Fiscal Year 2004
7/1/03—6/30/04

GED Registration	1,143
Retests	755
Tests Passed	604
Transcripts Processed	480

Home-Schooling

The Regional Office of Education serves as a resource to those parents who are interested in home-schooling their children. Information is shared with the parents to assist them. A request is made for parents to register with the regional office as a home-schooling parent and assure that education is being provided to their children. There are no fees collected for resource information.

Dropout Intervention Project

The 2003 – 2004 school year marked the 16th year of this project. The goal of the Dropout Intervention Project is to bring “disconnected” youth from 16-21 years of age back into the mainstream of society. As of June 2004, the Project enrolled 84 students in the GED Program. Five of these students received their GED and 85% of the enrolled students continued in the program.

Positive Behavior Interventions and Support

The 2003-2004 school year marked the 3rd year of the project. This program serves both Kane and Lake Counties from the Kane County ROE. PBIS leads school teams in elementary, middle and senior high schools through a three year process that increases the positive behavior of all students. As of June 30, 2004, forty-five schools in Kane County serving over 31,000 students are currently involved. Twenty administrators have attended the PBIS Administrator Academies in Kane County.

Funding \$117,000

Masters/Doctorate & Counselor's Cohort

Aurora University and the Regional Office of Education have collaborated to develop and provide a 36-hour Masters degree program for the teachers in Kane County. The teachers may receive their degree through a program of Masters in Teaching or Masters in Educational Leadership. Approximately 1,420 teachers have participated in this program.

Aurora University and the Regional Office of Education have collaborated to develop and provide a Doctorate Degree Program. The individuals may receive their degree through a program of Doctorate in Educational Administration or Doctorate in Curriculum. Approximately 120 educators are actively involved in this program.

Kane County Youth Outreach Program

In 2003 – 2004 we completed the 19th year of the Kane County Truancy Prevention Program and continued the 16th year of the Kane County Dropout Intervention Project.

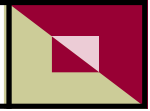
Kane County had 1,185 “official” referrals from our local schools requesting truancy assistance from our staff. The services provided during the 2003 – 2004 school year were the following:

SERVICES	<u>2003-2004</u>	<u>2002-2003</u>
School Visits	3,810	3,920
Home Visits	1,250	1,221
Student Contacts	3,875	3,815
Community Agency Contacts	930	910
School Conferences	416	597
Regional Conferences	29	51
Classroom Prevention Presentations	7*	20*
Retrieved Dropouts to GED Program	84	70
Juvenile Court Cases	37	29/117 appearances
Adult Court Cases	45	36/28 appearances

*(465 served)

Funding: \$339,663

<u>SOURCE OF REFERRALS</u>	<u>2003-2004</u>	<u>2002-2003</u>
<u>By District</u>		
U46 Elgin	289	370
101 Batavia	17	10
129 West Aurora	295	372
131 East Aurora	347	415
300 Dundee/Carpentersville	195	188
301 Burlington	5	1
302 Kaneland	1	5
303 St. Charles	24	23
304 Geneva	7	3
Other	5	2
<u>By Grade Level</u>		
Elementary K-6	708	780
Middle School	314	401
High School	163	136
Other	0	72
<u>By Gender</u>		
Males	606	680
Females	579	709
TOTAL	1,185	1,389



Regional Safe Schools Program

The Regional Safe Schools Program (RSSP) began with a planning and implementation grant in school year 1996-1997. This program is a result of legislation providing programs for disruptive students who are eligible for suspension or expulsion. The legislature appropriated \$15 million for safe school programs. Regional Offices of Education wrote program grants to access this money. These funds are renewable on an annual basis and are used by Kane County to provide educational programs to disruptive students in a variety of ways. During the 2003 - 2004 school year, Districts U-46, Mid-Valley (Districts 101, 301, 302, 303, 304), and District 300 operated alternative to expulsion programs. All the above programs are under the auspices of the Kane County Regional Office of Education.

In 2003 – 2004 approximately 133 students were served in the above programs. They were served at 5 different sites. All of these students were eligible for expulsion or had multiple suspensions. Instead they attended RSSP sites in their local districts. Eighty percent of these students completed the program successfully. Due to the RSSP, expulsions have been reduced by 63% in Kane County since the 1994-1995 school year.

Funding: \$814,365

System of Support

The Kane County Regional Office of Education's role in the system of support is to create a powerful and effective partnership between the System of Support schools and Regional System of Support Provider (RESPRO Area 1-C) to improve teaching and learning, student learning, and the learning community. Support and assistance was provided through direct training to eligible individual schools and public school districts aligning with the goals articulated in the state's System of Support and No Child Left Behind guidelines.

Funding: \$39,377

Project REACH (Restoring Educational Access to Children who are Homeless)—Area One

Project REACH focuses on schools and communities in Area One (Lake, McHenry, suburban Cook, DuPage, Kane, Kendall, Will and Grundy counties) in order to eliminate barriers to education for homeless students.

Project REACH experienced a challenging workload as the school year unfolded.

- Extensive outreach to agencies and locations frequented by homeless families resulted in over 150 calls to Project REACH for assistance with enrollment issues throughout Area One. As a result of this intervention, 257 homeless students, including 27 unaccompanied homeless youth, gained access to education. Additionally, 30 non-educational cases requiring intensive referral services were successfully handled.
- Besides interventions on behalf of homeless families, Project REACH staff conducted 66 meetings and/or trainings for over 2,000 persons, presenting information about recent changes of federal and state laws governing access to school for homeless students. Extremely favorable reviews and referrals for additional presentations confirmed the belief that school personnel and agency staff welcomed the information.

Local liaisons from the 305 school districts and personnel involved with homeless students are supported by Project REACH with clarification about legal requirements, assistance on enrollment issues, and guidance on how to better serve this growing population.

Sponsored by the Kane County ROE, Project REACH is fully funded by the Illinois State Board of Education through the McKinney-Vento Homeless Education Assistance Act of 2001.

Funding: \$255,355

Reading First

The federal No Child Left Behind's Reading First program, authorized under Title I, Part B, Subpart 1 of the Elementary and Secondary Education Act (ESEA), is a national initiative to improve reading in kindergarten through grade three by implementing a classroom reading program based on phonemic awareness, phonics, vocabulary development, reading fluency and reading comprehension strategies. The Kane County Regional Office of Education works cooperatively with other regional and state agencies to provide technical assistance services, including professional development, to facilitate implementation of the Reading First program.

The Kane County ROE works closely with Reading First schools and districts to provide the comprehensive Reading First Academy trainings for all kindergarten through third grade teachers and special education teachers. Training and technical support for improvement of reading instruction and raising student achievement in these schools includes planning, assessment, evaluation, and ongoing professional development for instructional staff, building leadership, and coaches.

Funding: \$193,399



Gifted Education

The Regional Office of Education provides support and training to enhance our district's ability to meet the special needs of students in each respective district.

- Illinois Association for Gifted Children State Conference *
- ISBE/ROE State Gifted Conference *
- Kane County Gifted Services Network
- High School Gifted Pilot Project
- Differentiating Instruction in the Everyday Math Classroom
- Responding to Student Learning Needs using Differentiation
- Identification of Gifted Students
- Meeting the needs of Gifted Students in the Regular Classroom

Funding: \$ 680

Participants: 368

* Attendance at the two state conferences exceeded 750 participants.

Standards-Aligned Classroom Project (SAC)

The Standards-Aligned Classroom project was created to help classroom teachers align their classroom level instruction and assessment to the Illinois Learning Standards. This professional development program utilizes the learning team approach to help teachers become more "assessment literate" following the work of Rick Stiggins and the Assessment Training Institute.

In the fall, each Level I team comprised of the building principal, several teachers, and a facilitator/coach, attended a two-day training. During the school year each team attends a team meeting approximately every two weeks to reflect on and share professional readings and implementing standards into the classroom experiences using the Stiggins approach to assessment and instruction.

Also each fall, previous Level I teams attend a one-day training to create action plans to further support the classroom integration of the learning standards into curriculum, instruction and assessment. These Level II teams also meet on a regular basis with a coach to reflect and share their implementation experiences.

Funding \$16,449

Illinois Administrator's Academy

Individuals employed in positions requiring a Type 75 certificate as a condition of employment (Illinois School Code Section 5/24A-3) are required to complete a minimum of one Illinois administrators' academy each year.

Administrators' Academy offerings for 2003-2004:

- Introduction to the Evaluation of Certified Staff (four sessions)
- Ventures For Excellence, Selection & Development of Teachers, Phases I & II
- Ventures For Excellence, Selection & Development of Teachers, Phases I & II
- Induction/Mentoring (Induction for the 21st Century)
- Raising High School Reading Achievement
- Standards for the Principal/Administrator (two sessions)
- The Legal Basis of Student Management
- Leadership for Sustained Educational Systems Change (Gates Project, Levels I & II)
- Career Development (ETC) and Counseling
- PBIS (Positive Behavior Interventions & Supports) (two sessions)
- Recognizing & Assisting Homeless Students in the Classroom (two sessions)
- Leadership for the Development of a Profile of Instructional Practices (two sessions)
- GIS Fundamentals For Administrators
- Conducting Effective Meetings: The Art & Science of Facilitation
- School Improvement Planning: Meeting Criteria for an ISBE Approved SIP
- The 17 Indisputable Laws of Teamwork
- Change - Who Moved My Cheese?
- The 21 Irrefutable Laws of Leadership
- The School Leadership Standards: A Roadmap for Leadership
- The Role of Leadership In The Change Process
- A Framework For Understanding Poverty

Funding: Self Sustaining

Participants: 647



Kane County Human Resources Consortium (KCHRC)

The KCHRC was very successful in 2003-2004, its second year in existence. This on-line teacher application system processed over 10,000 applications resulting in the hiring of nearly 850 staff members.

All nine Kane County public school districts contributed funds totaling \$49,000 to support the project. The KCHRC meets twice each month, the first time to deal with KCHRC business and the second for associated professional development.

The KCHRC has received significant notoriety around the state and nation resulting in many inquiries from like entities interested in duplicating the program here in Kane County.

Funding: \$49,000

Participants: 9 of 9 school districts

Career Awareness & Development & ETC

The state funded Career Awareness & Development grant was cut for 2003-2004. Several collaborative initiatives of the Kane County ROE, VALEES, Northern Kane EFE, the nine Kane County public school districts, and the Illinois School Counselors Academy related to the grant continue to develop on a self-sustaining basis.

- Share & Steal Part II
- Illinois School Counselors' Academy regional forum(two sessions)
- A School Counselors' Academy
- Pursuing Nontraditional Occupations

Funding: \$46,000 (all partners)

Participants: 324

Career Cruising

Since May of 2000, the Kane County ROE, Northern Kane ROE, VALEES, and the Illinois School Counselors' Academy have collaborated in developing programs to better integrate career and technical education with the total school educational enterprise, grades K-14. The initial effort (COMET Project) included development of an electronic career portfolio for all students.

The cooperative partners identified the commercial product known as Career Cruising to meet the needs of the electronic portfolio goal. In 2003-2004 all the Kane County middle and high schools were provided Career Cruising site licenses. Research indicates variable levels of implementation, but the variety and scope of program use assures that the project will continue.

Funding (all partners): \$12,000

Participants: 7,500

Business Partners Initiative

The Business Partners Initiative currently involves a partnership between Dukane Corporation of St. Charles and First Security Systems of Naperville, Illinois to provide overhead projectors, LCD projectors, and other various multimedia products to schools at a significantly below retail price.

Professional Development

The Regional Office of Education supports a wide variety of activities including institutes, workshops, conferences, networking, technical assistance, information dissemination, and consulting to meet the needs of our schools. These activities are designed to compliment the other Kane County Regional Office of Education and district's professional development programs. Our office collaborates with local, regional, and state educational partners representing both the public and private sector in creating learning opportunities for the entire Kane County Learning Community. Reading First and System of Support activities supported through No Child Left Behind (NCLB) federal funding are aligned with the goals articulated in the Illinois State board of Education and the No Child Left Behind guidelines.

Learning Standards, ISAT, PSAE, Assessment

Improving Student Achievement on the ISAT Reading K-5
 SAC Level I Training
 SAC Level II Training
 Using Performance Based Assessment in the K-8 Math Classroom
 Illinois Math Performance Descriptors: A New Resource for Teachers (K-5)
 Illinois Math Performance Descriptors: A New Resource for Teachers (6-12)
 Illinois Frameworks for Learning: Reading (3-8)
 Illinois Frameworks for Learning: Math (3-8)
 ISAT Reading Training
 ISAT Writing Training
 ISAT Math Training

Fundamental learning Areas and Special Interest

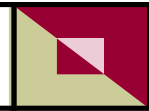
Adler Workshops: Gravity & Black Holes
 Fox River Watershed Conference
 Career Awareness & Development
 AgTech Tour for Teachers
 Forest Preserves As Classrooms
 K-5 Mathematics Curriculum Showcase
 Grades 6-8 Science Curriculum Showcase
 High School Mathematics Curriculum Showcase
 Illinois Frameworks for Learning: Reading (3-8)
 Illinois Frameworks for Learning: Math (3-8)
 Improving Student Achievement on the ISAT Reading K-5
 Using Performance Based Assessment in the K-8 Math Classroom
 Fox River Watershed Monitoring Network Orientation Workshop
 Illinois Math Performance Descriptors: A New Resource for Teachers (K-5)
 Illinois Math Performance Descriptors: A New Resource for Teachers (6-12)
 Why is Everybody Always Picking on Me: Bully Prevention!
 A Day in a One-Room School
 Kane County Music Institute Day
 Math in Action: Practical Applications for Learning Math Concepts
 Tomorrow's Leaders: Understanding IL Local Government
 Wildlife in the Classroom
 Into the Woods: Using Children's Literature to Investigate Trees and Forests
 Total Physical Response Storytelling Workshop
 Using Microsoft Office
 Fun with Science and Agriculture
 GIS Fundamentals for Administrators
 Street Drug Awareness Workshop
 Inspiration
 On-Line Teacher Productivity Tools
 Enhancing Learning with On-Line News
 WebQuests for your Classroom
 Understanding FOSS Science
 Mask Making
 Music day for High School Band, Choir, and Orchestra Directors
 Food Safety Workshop
 Starlab Basic Training
 Verbal Judo
 Bilingual- "Closing the Achievement Gap for Language Minority Students
 Bilingual-Language Acquisition & Complementary Ed. Strategies
 A Day at the Zoo
 School Safety & Security: Strategies and Resources
 Co-op Corps "Foreign Language"

Educational Strategies and Initiatives

Working with Children of Poverty
 A Framework for Understanding Poverty
 Early Childhood Conference: Practicing Best Practices
 Standards for the Principal/Administrator
 Rules of Engagement
 Keeping Schools Safe in a Day of Homeland Security
 Integrating Technology into the Curriculum
 It's Not Your Grandmother's Keyboard
 Introduction to Skillstutor Workshop
 Faculty Meetings as a Tool for Capacity Building
 No Child Left Behind
 Positive Behavior Intervention & Supports: An Overview
 PBIS Target Interventions – Initial
 PBIS Functional Assessment of Behavior – Initial
 PBIS Target Interventions
 PBIS New Team Training-Initial
 PBIS Data Management – Initial
 PBIS New Team Training Follow-up
 PBIS: New Team Training- Advanced
 Schoolwide Information System Training (SWIS)
 Positive Behavior Interventions & Supports Coaches' Training - Follow-up
 Illinois School Counselors Academy
 School Safety & Security: Strategies and Resources
 PBIS Targeted (Yellow) Training Follow-up
 PBIS Targeted (Red) Training Follow-up
 Paths to High Levels of Learning and Achievement for English Language Learners

Reading and Writing

Into the Woods: Using Children's Literature to Investigate Trees and Forests
 Non-Fiction Reading, Writing, and Research
 Essential Steps to Maximize Learning and Improving Literacy
 Balancing Literacy Instruction: Write Traits, Grades K-3
 Balancing Literacy Instruction: Write Traits, Grades 4-6
 Linking Literacy and Technology
 Six Trait Writing Assessment and Instruction, (7-12)
 Six Trait Writing Assessment and Instruction, (K-6)
 Reading First Academy (2nd Grade)
 Reading First Academy (1st Grade)
 Reading First Academy (Grade K)
 Improving Student Scores in Reading Content Areas ISAT 6-8 PSAE 9-12
 6 + 1 Traits of Writing: The Complete Guide
 Closing The Achievement Gap
 Reading Strategies for Literature Circles and Book Clubs
 ISEL Training
 DIBELS Training
 TPRI Training
 RF Coaches Toolbox Training
 Targeted Conferencing Training
 Paraprofessionals Training
 Reading First: Phonemic Awareness Implementation Support
 Reading First: Phonics Implementation Support
 Reading First: Fluency Implementation Support
 Reading First: Vocabulary Development Implementation Support
 Reading First: Comprehension Implementation Support



Professional Development Con't

Special Education and School Support Services

Targeting Consonants with Apraxic Students
Differentiating Instruction in the everyday Math Classroom as a Sp. Ed. Teacher
Enhancing ESL Programs Through Technology
Autism: Basic Training & Case Management
Taking Data to Demonstrate Efficacy in Special Education
Equine Assisted Psychotherapy
Sensory Processing: The Seven Senses and their Impact on Learning

Developing Behavior Intervention Plans
A School Counselor's Academy
Responding to Student Learning Needs using Differentiation
Recognizing and Assisting Homeless Students
PBIS Universal Team Training
Differentiating the Curriculum in the Elementary Classroom
Illinois School Counselors Academy

Funding \$ 259,407

Participants: 8,772

Technical Assistance to Schools

Part of the responsibility of the Kane County Regional Office of Education is to provide technical assistance to schools and educators as they work to improve curriculum, instruction, and learning. This assistance includes presentations, facilitation, consulting, coaching, and training.

Kane County Government Computer Courses

The Regional Office of Education has helped design and coordinates a Technology Training Program funded by Kane County Government for its employees. This program uses the ROE computer lab during available times to train on various topics including Microsoft Office, Introduction to the Internet, Email, WordPerfect, and Lotus.

For questions concerning this program, contact Phil Morris (pmorris@kane.k12.il.us)

The ROE also provides the lab for departments to use for specialized training throughout the year.

Enhancing Education Through Technology Grant

The primary goal of the Ed Tech program is to improve academic achievement through the use of technology in schools. Specifically, the grant addresses the integration of technology with teacher training and curriculum development to establish and use successful research-based instructional methods.

During this 3 year grant, the Regional Office of Education has been able to provide the following:

7 Wireless laptop carts containing 16 laptops and a wireless printer
35 Licenses of SkillsTutor to Middle Schools and schools not achieving AYP (<http://www.skillstutor.com>)
Created an Educator Portal (<http://portal.kaneroe.org>) to support web resources
Funded Encyclopedia Britannica and EBSCO for all schools via the web
Provided support for online Technology Needs Assessment for all schools
Provided technology professional development in areas of need for all schools
Have begun developing resources in Spanish for parents
Created online web-based training modules for teachers (<http://www.newexplorations.com>)
Begin providing access to Project Connect for parents (<http://www.projectconnect.info>)

Further questions concerning this program, please contact Phil Morris (pmorris@kane.k12.il.us)

This initiative has been funded by U.S. Dept. of Education NCLB ESEA Title V, Part D, Subpart I funds.

Learning Technology Services

The Regional Office of Education provides support and training in many areas of technology. To determine the activities to provide during the year, a needs assessment is given during the year to teachers and monthly technology coordinator meetings occur. Monthly Technology Coordinator meetings are used to communicate information from the Illinois State Board of Education, and also allow dialogue between districts.

Learning Technology Services also provides technical support within the Regional Office of Education to maintain connectivity to the Illinois State Board of Education electronic systems including Teacher Certification and Administrator's Academy. It also continues to support the Safe Schools programs within Kane County school districts and support the technology implementation at the Kane County Juvenile Justice Center (JJC).

For questions concerning this program, contact Phil Morris (pmorris@kane.k12.il.us)

During this past year the following services have been provided for school districts:

- Hosting of 7 district and private school websites
- Online Registration for workshops with digital encryption security
- Professional Development Library accessible from ROE Website
- Consultation for KCHRC On-Line Application
- Hosting of over 5,000 teacher email accounts
- Digital Imaging of 180,000 records
- Hosted Specialized training for school districts (i.e. SASI, Tech Assessment, etc.)

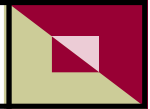
Area One West Learning Technology Center

The Illinois State Board of Education established the Learning Technology Center program for the purpose of providing a coordinated, statewide support and infrastructure which assists school districts in planning for, implementing, assessing results and educating school staff in the use of technology and telecommunications in curricular, instructional and administrative functions. More information on the Learning Technology Center program can be found at <http://www.isbe.net/curriculum/elearning/default.htm>

Through this purpose, the Kane County Learning Technology Center has provided the following services using funding provided through the contract from ISBE.

- Attending Statewide Meetings
- Facilitated or Assisted schools with Technology Planning
- Hosted several Peer Review Sessions for Technology Plan Approval
- Provided funding for Conference Attendance for Technology Coordinators and Teachers
- Assisted Districts with funding and training for Reading / Math Initiatives using Technology
- Provide technical support for connection to the Illinois Century Network (ICN) (<http://www.illinois.net>)
 - Provide network consultation for the design and implementation of Local Area Networks (LANS) and Wide Area Networks (WANS)
 - Help schools with the monitoring , management, and troubleshooting of their WANS
 - Work with ICN Staff to assist in troubleshooting
- Assist schools with E-Rate applications to the Federal government (<http://www.sl.universalservice.org>)

For questions concerning this program, contact Phil Morris (pmorris@kane.k12.il.us)



Networks

This system of educator networks is provided to showcase best practices in respective content areas, develop leadership for instructional improvement, solve instructional and assessment concerns, and promote the professional development of teachers in their content areas. Each network meets multiple times each year, depending on the professional needs of the participants and the goals of the respective network.

- Kane County Gifted Services Network
- Special Education Directors Network
- Learning Leaders Network
- Reading Leaders Networks
- Technology Leaders Network

Funding: \$2,400

Participants: 242

DISTRICT TRANSPORTATION ANALYSIS

7/1/2003 - 6/30/2004

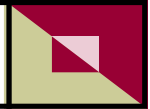
	DISTRICT	PUPILS BUSSED	BUS MILES TRAVELED	MILES/ PUPIL	REGULAR TRANSP	SPEC ED & OTHER	COST OF TRANSP.	COST/ MILE	COST/ PUPIL
U46	ELGIN	25,117	3,963,692	157.8	\$8,621,007	\$8,251,008	16,872,015	\$4.26	\$672
101	BATAVIA	3,743	564,445	150.8	1,063,225	1,006,560	2,069,785	\$3.67	\$553
129	AURORA WEST	6,494	1,351,438	208.1	1,798,338	1,999,690	3,798,028	\$2.81	\$585
131	AURORA EAST	604	778,483	1,288.9	0	2,458,308	2,458,308	\$3.16	\$4,070
300	DUNDEE	16,146	2,168,667	134.3	4,356,583	4,341,584	8,698,167	\$4.01	\$539
301	CENTRAL	2,521	514,710	204.2	940,525	531,532	1,472,057	\$2.86	\$584
302	KANELAND	3,212	707,007	220.1	959,858	762,595	1,722,453	\$2.44	\$536
303	ST CHARLES	10,497	1,567,767	149.4	1,854,505	2,726,297	4,580,802	\$2.92	\$436
304	GENEVA	4,896	530,225	108.3	1,513,778	872,512	2,386,290	\$4.50	\$487
	TOTAL 2003-2004	73,230	12,146,434	165.9	\$21,107,819	\$22,950,086	\$44,057,905	\$3.63	\$602
	TOTAL 2002-2003	71,484	17,074,289	238.9	\$18,865,442	\$23,578,044	\$42,443,486	\$2.49	\$594
	CHANGE	1,746	(4,927,855)	(73.0)	\$2,242,377	(\$627,958)	\$1,614,419	\$1.14	\$8
	PCT CHANGE	2.4%	(28.9%)	(30.6%)	11.9%	(2.7%)	3.8%	45.9%	1.3%

ASSESSED VALUATION PER ADA - SCHOOL PROPERTY - BONDED INDEBTEDNESS

DISTRICT	ASSESSED VALUATION FY2003	ASSESSED VALUATION PER FY04 ADA	TOTAL SCHOOL TAX RATE	ORIGINAL COST OF PROPERTY & EQUIPMENT AS OF 6-30-03	BONDED INDEBTED- NESS AS OF 6-30-03	BONDED INDEBTED- NESS AS OF 6-30-04	PCT CHG	% OF BONDING POWER USED AS OF 6-30-04
46 ELGIN	3,987,429,542	112,600	4.9424%	472,533,576	365,329,764	390,302,644	6.8%	66.4%
101 BATAVIA	859,350,141	151,973	4.3072%	90,915,854	54,975,000	52,510,000	-4.5%	46.4%
129 AURORA WEST	1,293,995,836	124,428	3.9066%	119,221,025	136,669,473	130,990,000	-4.2%	76.5%
131 AURORA EAST	619,431,923	59,775	3.8466%	113,381,785	41,228,323	41,210,678	0.0%	48.2%
300 DUNDEE	2,337,592,626	141,392	3.8656%	156,748,636	145,661,076	141,919,323	-2.6%	45.2%
301 CENTRAL	355,269,957	156,674	5.4204%	43,636,552	23,768,993	27,396,822	15.3%	48.5%
302 KANELAND	491,763,449	158,981	4.6805%	53,539,137	42,341,967	61,306,825	44.8%	62.4%
303 ST CHARLES	2,381,372,416	199,760	4.1659%	227,923,442	171,633,666	167,888,666	-2.2%	52.2%
304 GENEVA	954,404,236	185,646	4.9617%	130,505,068	81,881,829	81,645,119	-0.3%	62.2%
TOTAL FY2004	13,280,610,126	131,772	---	1,408,405,075	---	1,095,170,077	3.0%	58.0%

CLASSROOM BUILDINGS IN USE - 7/1/03 - 6/30/04

DISTRICT	ELEMENTARY SCHOOL		MIDDLE OR JUNIOR HIGH SCHOOL		SENIOR HIGH SCHOOL		MOBILE CLASSROOM		OTHER SPECIAL ED, VOC ED, ETC	
	FY04	FY03	FY04	FY03	FY04	FY03	FY04	FY03	FY04	FY03
U46 ELGIN	39	40	7	7	4	4	76	147	3	3
101 BATAVIA	6	6	1	1	1	1	0	0	0	0
129 AURORA WEST	12	12	3	3	1	1	4	4	0.5	0.5
131 AURORA EAST	12	12	3	3	1	1	0	0	0.5	0.5
300 DUNDEE	14	14	4	3	3	3	7	6	2	3
301 CENTRAL	3	3	1	1	1	1	0	0	0	0
302 KANELAND	2	2	1	1	1	1	13	13	1	1
303 ST CHARLES	12	12	3	3	2	2	5	4	1	1
304 GENEVA	5	6	1	1	1	1	0	0	0	0
TOTAL	105	107	24	23	15	15	105	174	8	9
CHANGE	-2		1		0		-69		-1	



FY 2004 LIFE SAFETY

DISTRICTS	TOTAL SITES	FY2004 NOTATIONS	AVERAGE SITES	FY2003 NOTATIONS	CHANGE
U46 ELGIN	54	754	13.96	469	285
101 BATAVIA	8	11	1.38	47	(36)
129 AURORA WEST	18	45	2.5	95	(50)
131 AURORA EAST	18	42	2.33	73	(31)
300 DUNDEE	24	668	27.83	218	450
301 BURLINGTON	5	2	.40	21	(19)
302 KANELAND	5	6	1.20	30	(24)
303 ST. CHARLES	18	111	6.17	260	(149)
304 GENEVA	8	9	1.13	35	(26)
TOTALS	158	1,648	10.43	1,248	400

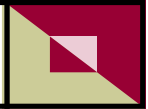
FY 2004 CONSTRUCTION AND OCCUPANCY PERMITS

DISTRICT	NEW SITES	REPAIRS/ RENOVATIONS	ADDITIONS	TOTAL REQUESTED	APPROVED
U46 ELGIN	0	23	0	23	23
101 BATAVIA	0	1	0	1	1
129 AURORA WEST	3	25	1	29	29
131 AURORA EAST	0	16	0	16	16
300 DUNDEE	0	17	1	18	18
301 BURLINGTON	0	0	0	0	0
302 KANELAND	1	6	2	9	9
303 ST. CHARLES	0	28	1	29	29
304 GENEVA	1	4	1	6	6
TOTALS	5	120	6	131	131

CERTIFIED PERSONNEL - 7/1/03 TO 6/30/04
DEGREES - SALARIES - EXPERIENCE - STAFF/STUDENT RATIOS

DISTRICT	TOTAL	DOCTORS &			TEACHERS	AVE. SAL.			AVE. SAL.
	CERTIFIED (INCLUDE PART TIME)	EDUC SPEC/CAS DEGREE	MASTERS DEGREE	BACHELORS DEGREE	AIDES (INCLUDE PART TIME)	FULL-TIME CERTIFIED TEACHERS	%	CERTIFIED ADMIN	%
U46 ELGIN	2,446	60	1,580	806	456	\$47,667	9%	\$87,600	9%
101 BATAVIA	421	9	273	139	85	\$58,174	0%	\$75,428	9%
129 AURORA WEST	754	12	414	328	210	\$52,657	9%	\$82,545	9%
131 AURORA EAST	1,109	13	345	751	153	\$44,029	0%	\$103,932	0%
300 DUNDEE	1,051	28	713	310	306	\$53,351	4%	\$93,144	9%
301 CENTRAL	183	2	111	70	29	\$48,329	9%	\$77,612	9%
302 KANELAND	255	2	169	84	31	\$50,557	8%	\$77,420	9%
303 ST CHARLES	925	33	549	343	253	\$47,723	8%	\$89,160	8%
304 GENEVA	397	18	266	113	148	\$55,263	0%	\$94,319	#
	%= TRS AMOUNT PAID BY DISTRICT				# TRS PAYMENT VARIES 8-9%				
TOTAL FY2004	7,541	177	4,420	2,944	1,671	\$50,861		\$86,796	
		1.9%	48.0%	32.0%	18.1%				
TOTAL FY2003	7,506	172	4,389	2,945	1,722	\$49,099		\$82,109	
		1.9%	47.6%	31.9%	18.7%				

DISTRICT	AVE YRS EXPERIENCE TEACHING IN ILLINOIS	ENROLLMENT	ENROLLMENT	TEACHER TO ADMINISTRATIVE STAFF RATIO	OTHER SUPPORT STAFF	ENROLLMENT TO SUPPORT STAFF RATIO	ENROLLMENT PER FALL HOUSING RPT FY2004
		PER CERTIFIED STAFF MEMBER FY2004	PER CERTIFIED STAFF MEMBER FY2003				
U46 ELGIN	12.0	15.9	14.1	13.2	1,822	21.3	38,821
101 BATAVIA	10.1	14.1	14.1	18.1	57	104.5	5,956
129 AURORA WEST	10.3	15.5	14.8	13.5	184	63.7	11,717
131 AURORA EAST	12.6	10.3	15.5	27.4	384	29.7	11,420
300 DUNDEE	12.7	17.3	15.8	14.5	538	33.8	18,175
301 CENTRAL	13.0	13.2	13.0	15.6	100	24.1	2,413
302 KANELAND	11.6	13.0	12.5	13.2	105	31.7	3,325
303 ST CHARLES	12.8	14.1	14.8	14.4	371	35.0	13,002
304 GENEVA	12.3	14.0	13.7	16.3	182	30.5	5,544
TOTAL	11.9	14.2	14.3	15.2	3,743	29.5	110,373
PRIOR YEAR	12.9	14.3	13.8	15.1	3,742	29.2	109,252



FY04 ENROLLMENT

ENROLLMENT - PUBLIC SCHOOLS - SEPT, 2003

DIST	SCHOOL	FY03	TOTAL	PRE-K	K-5	6-8	9-12
U46	ELGIN	39,187	38,821	925	18,678	8,913	10,305
101	BATAVIA	5,858	5,956	44	2,734	1,466	1,712
129	AURORA WEST	11,451	11,717	287	5,572	2,675	3,183
131	AURORA EAST	10,756	11,420	0	6,410	2,471	2,539
300	CARPENTERSVILLE	18,854	18,175	436	8,542	4,212	4,985
301	CENTRAL	2,333	2,413	16	1,052	603	742
302	KANELAND	3,049	3,325	30	1,606	757	932
303	ST CHARLES	12,370	13,002	100	5,912	3,052	3,938
304	GENEVA	5,385	5,549	51	2,563	1,365	1,570
TOTAL ALL DISTRICTS		109,243	110,378	1,889	53,069	25,514	29,906

ENROLLMENT - NON-PUBLIC SCHOOLS - SEPT, 2003

(INCLUDES RESIDENT & NON-RESIDENT)

DIST	SCHOOL	FY03	TOTAL	PRE-K	K-5	6-8	9-12	SPEC ED	
								K-8	9-12
U46	ELGIN	2,416	3,585	406	1,523	703	776	82	95
101	BATAVIA	1,031	1,057	215	196	88	558	0	0
129	AURORA WEST	2,602	3,026	217	1,199	563	1,047	0	0
131	AURORA EAST	1,127	1,436	255	778	403	0	0	0
300	CARPENTERSVILLE	977	1,001	178	506	203	3	52	59
301	CENTRAL	76	85	0	21	46	18	0	0
302	KANELAND	70	82	0	0	0	82	0	0
303	ST CHARLES	851	1,013	196	573	244	0	0	0
304	GENEVA	863	845	150	522	173	0	0	0
TOTAL ALL DISTRICTS		10,013	12,130	1,617	5,318	2,423	2,484	134	154

FEDERAL & STATE SUPPORT REVENUE

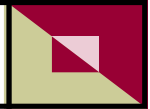
FISCAL YEAR ENDING JUNE 30, 2004

	STATE AID	STATE - OTHER	FEDERAL	TOTAL	\$ PER ADA
U46 ELGIN	67,279,755	32,828,386	16,816,437	116,924,578	3,345
101 BATAVIA	6,869,709	2,755,856	419,176	10,044,741	1,834
129 AURORA WEST	17,672,499	10,260,970	5,446,882	33,380,351	3,223
131 AURORA EAST	36,122,053	9,774,713	10,083,817	55,980,583	5,513
300 CARPENTERSVILLE	22,737,853	11,229,349	7,515,198	41,482,401	2,558
301 BURLINGTON	1,741,604	1,769,480	74,598	3,585,683	1,598
302 KANELAND	2,755,779	2,139,954	183,245	5,078,977	1,707
303 ST CHARLES	3,840,969	6,851,890	1,014,335	11,707,194	1,008
304 GENEVA	1,768,679	2,779,345	184,214	4,732,238	946
TOTAL FY2004	160,788,900	80,389,943	41,737,902	282,916,746	2,858
TOTAL FY2003	148,936,385	72,882,639	40,413,445	262,232,469	2,689
CHANGE	8.0%	10.3%	3.3%	7.9%	\$168.94

FEDERAL & STATE FLOW-THRU REVENUE

FISCAL YEAR ENDING JUNE 30, 2004

	VALEES			KANE ROE			TOTAL		
	FY03	FY04	CHANGE	FY03	FY04	CHANGE	CHANGE		
FY03 REVENUE REC'D FY04		198,705					\$198,705	2.3%	
VOC ED - TECH PREP	3200	92,214	94,110	1,896			\$1,896	0.0%	
VOC ED - CO-ORDINATION	3210	89,191	0	(89,191)			(\$89,191)	-1.0%	
VOC ED - SECONDARY	3220	628,698	1,091,831	463,133			\$463,133	5.3%	
VOC ED - AGRICULTURE ED	3235	22,926	16,689	(6,237)			(\$6,237)	-0.1%	
VOC ED - WORK BASED	3265	15,684	0	(15,684)			(\$15,684)	-0.2%	
VOC ED - ELEM CAREER DEV	3275	41,501	0	(41,501)			(\$41,501)	-0.5%	
TECH-CLOSING THE GAP	3792		0				\$0	0.0%	
VOC ED - PERKINS-IIC	4745	458,652	457,914	(738)			(\$738)	0.0%	
VOC ED - PERKINS-IIIE	4770	91,955	0	(91,955)			(\$91,955)	-1.1%	
ISBE - STATE FUNDS				1,907,102	685,481	(1,221,621)	(\$1,221,621)	-14.0%	
FEDERAL - NO CHILD LEFT BEHIND				913,091	1,908,650	995,559	\$995,559	11.4%	
TOTAL		1,440,821	1,859,249	219,723	2,820,193	2,594,131	(226,062)	\$8,708,055	2.2%



REVENUE AND EXPENDITURE ANALYSIS

SOURCE OF FUNDS - 7/1/02 - 6/30/03

	STATE AID	OTHER STATE	LOCAL	FEDERAL	TOTAL
U46 ELGIN	66,872,397	33,632,981	199,960,808	18,649,575	319,115,761
101 BATAVIA	6,606,765	3,055,218	35,378,013	993,808	46,033,804
129 WEST AURORA	16,508,339	8,383,147	50,564,658	6,185,879	81,642,023
131 EAST AURORA	31,666,259	10,859,006	29,358,079	12,231,152	84,114,496
300 CARPENTERSVILLE	19,147,393	26,531,452	96,297,009	7,681,967	149,657,821
301 BURLINGTON	1,366,638	1,605,811	18,416,273	442,105	21,830,827
302 KANELAND	2,086,816	5,753,320	21,300,131	521,810	29,662,077
303 ST CHARLES	3,468,056	6,360,782	88,792,787	2,196,027	100,817,652
304 GENEVA	1,213,723	2,523,585	44,278,668	839,498	48,855,474
REGION	\$148,936,386	\$98,705,302	\$584,346,426	\$49,741,821	\$881,729,935

SOURCE OF FUNDS PER ADA - 7/1/02 - 6/30/03

	STATE AID	OTHER STATE	LOCAL	FEDERAL	TOTAL	FY2003 ADA
U46 ELGIN	1,889	950	5,649	527	9,015	35,397
101 BATAVIA	1,234	570	6,606	186	8,596	5,355
129 WEST AURORA	1,662	844	5,091	623	8,220	9,932
131 EAST AURORA	3,172	1,088	2,941	1,225	8,426	9,983
300 CARPENTERSVILLE	1,194	1,655	6,007	479	9,335	16,032
301 BURLINGTON	625	734	8,421	202	9,982	2,187
302 KANELAND	760	2,094	7,753	190	10,797	2,747
303 ST CHARLES	315	578	8,065	199	9,157	11,009
304 GENEVA	249	517	9,078	172	10,016	4,877
REGION	\$1,527	\$1,012	\$5,992	\$510	\$9,042	97,519

EXPENDITURES - 7/1/02 - 6/30/03

	INSTRUC-TION	GEN ADMIN	SUPPORT	OTHERS	TOTAL	ANNUAL* SURPLUS/ DEFICIT
U46 ELGIN	187,720,107	4,779,222	119,210,171	104,720,948	416,430,448	(97,314,687)
101 BATAVIA	28,058,787	825,624	10,458,787	10,277,548	49,620,746	(3,586,942)
129 WEST AURORA	45,363,248	1,601,094	25,120,557	16,693,135	88,778,034	(7,136,011)
131 EAST AURORA	42,820,021	8,262,526	30,268,776	9,895,169	91,246,492	(7,131,996)
300 CARPENTERSVILLE	74,169,369	2,055,219	48,725,891	55,254,498	180,204,977	(30,547,156)
301 BURLINGTON	10,658,057	529,648	7,040,935	2,603,445	20,832,085	998,742
302 KANELAND	12,598,602	278,610	10,692,225	10,676,259	34,245,696	(4,583,619)
303 ST CHARLES	46,655,493	1,664,022	43,723,801	42,345,807	134,389,123	(33,571,471)
304 GENEVA	23,591,177	639,987	16,527,833	16,801,350	57,560,347	(8,704,873)
REGION	\$471,634,861	\$20,635,952	\$311,768,976	\$269,268,159	\$1,073,307,948	(\$191,578,013)

*"Annual Surplus/Deficit" does not reflect construction/life safety revenues from the sale of bonds in prior years.

**EXPENDITURES PER ADA
07/01/02—06/30/03**

	INSTRUC- TION	GEN ADMIN	SUPPORT	OTHERS	TOTAL	SURPLUS/ DEFICIT
U46 ELGIN	5,303	135	3,368	2,959	11,765	(2,749)
101 BATAVIA	5,239	154	1,953	1,919	9,265	(670)
129 WEST AURORA	4,567	161	2,529	1,681	8,938	(718)
131 EAST AURORA	4,289	828	3,032	991	9,140	(714)
300 CARPENTERSVILLE	4,626	128	3,039	3,447	11,240	(1,905)
301 BURLINGTON	4,874	242	3,220	1,190	9,526	457
302 KANELAND	4,586	101	3,892	3,886	12,465	(1,668)
303 ST CHARLES	4,238	151	3,972	3,846	12,207	(3,049)
304 GENEVA	4,837	131	3,389	3,445	11,802	(1,785)
REGION	\$4,836	\$212	\$3,197	\$2,761	\$11,006	(\$1,964)

**OPERATING EXPENDITURES PER ADA
07/01/02—06/30/03**

	OPERATING EXP - K-12	OPER EXP PER PUPIL	OPER EXP STATE RANK	TUITION CHARGE	TUITION STATE RANK
U46 ELGIN	334,288,181	8,683	46	7,596	38
101 BATAVIA	47,764,256	7,852	113	7,297	54
129 WEST AURORA	82,041,404	7,301	196	6,156	184
131 EAST AURORA	90,627,561	7,513	163	5,461	315
300 CARPENTERSVILLE	135,226,825	7,771	122	6,746	105
301 BURLINGTON	20,832,085	8,530	54	7,678	34
302 KANELAND	26,153,034	8,066	88	7,271	56
303 ST CHARLES	101,975,288	8,244	70	7,766	30
304 GENEVA	46,960,455	8,262	67	7,964	24
REGION	\$885,869,089	\$8,135		\$7,105	
STATE		\$8,483		\$7,077	