

**KANE COUNTY  
REGIONAL OFFICE OF EDUCATION**

**2007-2008  
ANNUAL REPORT**

**Douglas E. Johnson**  
*Regional Superintendent*

**Harrison Schneider**  
*Associate Regional Superintendent*

KANE COUNTY  
REGIONAL OFFICE  
OF EDUCATION

# KANE COUNTY REGIONAL OFFICE OF EDUCATION

**DOUGLAS E. JOHNSON**  
*Regional Superintendent*  
**HARRISON SCHNEIDER**  
*Associate Superintendent*



**210 S. Sixth Street**  
**Geneva, IL 60134**  
**Phone: 630/232-5955**  
**Fax: 630/208-5115**  
**[www.kaneroe.org](http://www.kaneroe.org)**

## **Regional Office of Education releases Fiscal Year 2008 Annual Report**

As Superintendent of the Kane County Regional Office of Education, Kane County, Illinois, I hereby submit the annual report of the activities of this office from July 1, 2007 through June 30, 2008.

This report is an overview and is not inclusive of all the services and collaborative partnerships the Regional Office of Education provides as an educational leader for the benefit of the schools and citizens of Kane County. This report uses information from end of year reports of our programs and services and from end of year school reports from the Illinois State Board of Education Website to make this Annual Report as comprehensive as possible. We hope it will help you better understand the work our office and the educators of Kane County provide to ensure our schools are safe and nurturing places of learning where all people, young and old alike, are valued and respected.

Respectfully submitted,

Douglas E. Johnson  
Regional Superintendent of Schools  
Kane County Regional Office of Education

---

**TABLE OF CONTENTS**

<b>Legislative Development of the Office.....</b>	<b>3</b>
<b>Organization Chart.....</b>	<b>4</b>
<b>Legal Reference for Annual Report .....</b>	<b>5</b>
<b>Budget----County Portion Only.....</b>	<b>5</b>
<b>Institute Fund Report .....</b>	<b>6</b>
<b>Kane County Educator of the Year Awards .....</b>	<b>6</b>
<b>School Safety and Security .....</b>	<b>7</b>
<b>Juvenile Justice Center.....</b>	<b>7</b>
<b>General Educational Development (G.E.D.) .....</b>	<b>7</b>
<b>Home-Schooling .....</b>	<b>7</b>
<b>Dropout Intervention Project .....</b>	<b>7</b>
<b>Positive Behavior Interventions and Support .....</b>	<b>8</b>
<b>Masters/Doctorate Degree Programs.....</b>	<b>8</b>
<b>Kane County Youth Outreach Program.....</b>	<b>8</b>
<b>Regional Safe Schools Program.....</b>	<b>9</b>
<b>System of Support, RESPRO Area 1-C .....</b>	<b>9</b>
<b>Kane County Regional Office of Education Homeless Education Program .....</b>	<b>9</b>
<b>Gifted Education .....</b>	<b>9</b>
<b>Networks .....</b>	<b>9</b>
<b>Illinois Administrators' Academy .....</b>	<b>10</b>
<b>Kane County Human Resources Consortium (KCHRC).....</b>	<b>10</b>
<b>Career Awareness &amp; Development &amp; ETC.....</b>	<b>10</b>
<b>Career Cruising.....</b>	<b>11</b>
<b>Sixteenth Circuit Court Gang Task Force.....</b>	<b>11</b>
<b>Middle School Endorsement Program.....</b>	<b>11</b>
<b>Professional Development .....</b>	<b>11</b>
<b>Technical Assistance to Schools.....</b>	<b>13</b>
<b>Learning Technology Services.....</b>	<b>13</b>
<b>Area One West Learning Technology Center .....</b>	<b>13</b>
<b>Fingerprinting .....</b>	<b>14</b>
<b>GIS (Geographic Information System).....</b>	<b>14</b>
<b>National Institute For School Leadership.....</b>	<b>14</b>
<b>Kane County Regional Board of School Trustees.....</b>	<b>14</b>
<b>District Transportation Analysis .....</b>	<b>15</b>
<b>Classroom Buildings in Use – 7/01/07 – 6/30/08 .....</b>	<b>15</b>
<b>Assessed Valuation Per ADA – School Property – Bonded Indebtedness.....</b>	<b>16</b>
<b>FY 2008 Life Safety.....</b>	<b>17</b>
<b>FY 2008 Construction and Occupancy Permits.....</b>	<b>17</b>
<b>Certified Personnel – 7/01/07 - 6/30/08.....</b>	<b>18</b>
<b>School Enrollment – 7/01/07 – 6/30/08 .....</b>	<b>19</b>
<b>ISBE Federal and State Revenue.....</b>	<b>19</b>

## Legislative Development of the Office

1829	The sixth General Assembly mandated appointment of a Commissioner of School Lands.
1841	Title changed to County Commissioner and Ex-Officio County Superintendent of Schools.
1865	Legislature called for the election of the County Superintendent of Schools.
1973	Consolidation of smaller counties resulted in 78 regions.
1975	Title of Chief Administrative Officer of an education service region changed to Regional Superintendent of Schools.
1977	Further consolidation resulted in 57 regions in Illinois.
1993	Educational Service Region office renamed Regional Office of Education.
1995	Further consolidation resulted in 45 regions, each with a population of at least 45,000 inhabitants.

## Regional Superintendents of Schools

R.B. "Bink" Mades	Prior to 1975
James L. Hanson	1975 – 1987
Dr. Douglas L. Hoeft	1987 – 1992
Dr. Clem Mejia	1993 – 2007
Douglas E. Johnson	2007 - Present

## Superintendent of Educational Service Region

The act of Congress which admitted Illinois to the Union in 1818 set aside the sixteenth section of every township for the use of schools. In 1819, therefore, the General Assembly directed the county commissioners' court in each county to appoint three trustees from each township. These trustees, whose terms ran for four years, were charged with hiring a surveyor, laying out section 16 into lots, leasing those lots for no more than a ten year period, and appointing a clerk and treasurer to handle the leases. In 1827 this was modified to give the trustees responsibility for laying out school districts within the township. These districts were to contain no fewer than 18 scholars, and the trustees were to hire a teacher for the district.

The situation changed in 1829, when Congress agreed to permit the sale of section 16 lands. For the first time, the county commissioners' court could appoint a commissioner and agent for the county school lands. This position was the predecessor of the Regional Superintendent of Schools. The commissioner was required to prepare a record of the school lands in the county. When nine-tenths of the voters in any township decided to sell their school lands, they were required to petition the commissioner in writing. In turn, he arranged the sale, and loaned the money from the sale back to the township.

During the 1830's, minor changes were made in the school law. The percentage of voters required to sign a petition for sale of school lands was reduced and the county commissioners' court again appointed township school trustees. Most important, in 1837 the citizens of a township were given the choice of incorporating for the purpose of establishing and supporting common schools. The trustees were assigned the superintendence of the township schools, and they could appoint a clerk, who would also act as treasurer.

The school land commissioner was required to pay to this treasurer all of the money in his care which belonged to the township, and would deliver to him all bonds, notes, and mortgages. The township treasurer made an abstract, in return, which showed the name of each teacher, the number of scholars at each school, and the total number of days taught. The treasurer was to deliver this abstract to the school land commissioner and receive the interest due the township from the state's school, college, and seminary lands.

In 1841, the office of school commissioner became elective, for a term of two years. This same year, each school district was required to elect a board of three school directors, also for two-year terms. The school directors were empowered to select building sites, build schools, employ teachers, and visit the district schools. In townships which had not chosen to incorporate, the trustees of school lands could appoint school directors if none were elected.

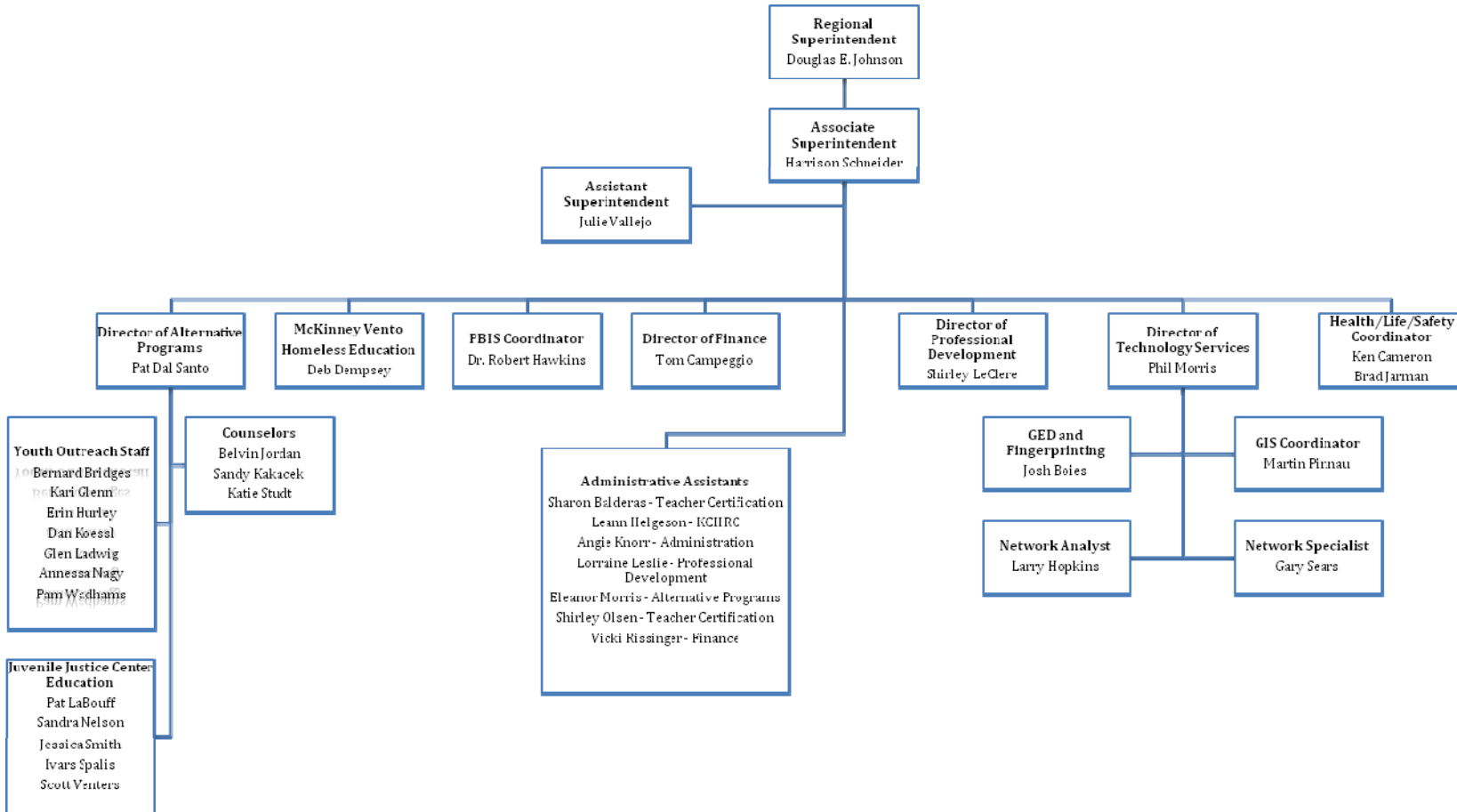
The school law was under continual revision during the 1840's, and in 1845 the school commissioner was made *ex officio* county superintendent of the common schools. His duties included visiting the schools, examining teachers, and issuing certificates. By 1865, each county elected a superintendent of schools every four years. Township school trustees reported to this superintendent on the number of schools, the number of scholars, the number of male and female teachers, the compensation of teachers, the number of persons under age 21 in the township, the principal and interest of the township fund, the amount of the common school fund received by the treasurer, the amount raised by taxation, all other receipts and expenditures, and any other information required by the superintendent.

The primary duties of the present superintendent of an educational service region remain much the same as they were in the nineteenth century. The superintendent conducts teachers' institutes, handles the school lands, visits the schools, examines the accounts of all school treasurers in the county, and distributes state money for education to the school districts in his charge.

# Kane County Regional Office of Education Organization Chart

Our Mission is to provide leadership in the learning community by:

- Developing Educational Resources
- Facilitating Learning
- Collaborating with all Educational Partners



## Legal Reference for Annual Report

This Annual Report is designed in part to meet the provisions of Chapter 105, Article 3, Section 5/3-6 and Section 5/3-15.8 of the School Code of Illinois. The report of schools visited and meetings attended as required by Section 5/3-5 is provided quarterly to the Public Service Committee of the Kane County Board. In addition, as established in Chapter 105, Article 2, Section 5/2-3.62 in the School Code of Illinois, the Regional Office of Education shall provide services to support administrators and teachers in the planning, implementation, and evaluation of education for gifted children, computer technology education, mathematics, science, and reading. The Regional Office of Education may provide training, technical assistance; coordination and planning in other program areas such as school improvement, career guidance, alcohol/drug education and prevention, and alternative education.

## Budget-----County Portion Only

Funds for the operation of the Kane County Regional Office of Education are provided by Kane County. This does not include salaries for the Regional Superintendent and the Associate Regional Superintendent, both of whom are paid by the State of Illinois. Nor does it include wages and operating expenses of the Professional Development Services Division, which is funded by the Illinois State Board of Education. The following budget and expenditure figures are based on the County's fiscal year, which runs from December 1<sup>st</sup> through November 30<sup>th</sup>.

<b>Kane County Regional Office of Education</b>				
<b>Kane County Budget Estimates</b>				
<b>FY 2008 - 2009</b>				
<b>Line Item</b>	<b>FY 2008</b>		<b>FY 2009</b>	
	<b>Budgeted Amount</b>		<b>Budgeted Amount</b>	
<b>Personnel Services</b>				
Full Time Salaries	\$	247,391.00	\$	252,098.00
Part Time Salaries	\$	-		
<b>Contractual Services</b>				
Public Official Bonding	\$	500.00	\$	100.00
Trials & Cost of Hearings	\$	100.00	\$	50.00
Printing - Legal	\$	150.00	\$	50.00
Printing - General	\$	1,000.00	\$	100.00
Maintenance - Computers	\$	300.00	\$	-
Maintenance - Copiers	\$	300.00	\$	-
Conference & Meetings	\$	4,500.00	\$	500.00
Employee Training	\$	200.00	\$	-
Mileage Expense	\$	4,500.00	\$	500.00
Association Dues	\$	1,475.00	\$	200.00
<b>Commodities</b>				
Office Supplies	\$	3,600.00	\$	1,500.00
Data Processing Supplies	\$	1,200.00	\$	-
Books & Subscriptions	\$	600.00	\$	-
Operating Supplies	\$	660.00	\$	500.00

## Institute Fund Report

### INSTITUTE FUND FINANCIAL REPORT JULY 1, 2007 THRU JUNE 30, 2008

**BEGINNING FUND BALANCE, JULY 1, 2007** **421,315.93**

#### RECEIPTS

1 YR REGISTRATIONS	3,860.00
MULTI-YEAR REGISTRATIONS	70,225.00
REGISTRATION RENEWALS-PAST YEAR	368.00
DUPLICATE CERTIFICATES	224.00
TEACHER CERT APPLICATION	58,944.00
DUE TO ISBE-TEACHER CERT APPL	(55,600.00)
PRINCIPAL MENTORING	3,500.00
INTEREST	15,511.48
EDUCATOR OF THE YEAR	10,980.00
REFUNDS & ADJUSTMENTS	(326.00)

**TOTAL RECEIPTS** 107,686.48

Processed approximately 1,539 new applications for teaching certificates and registered over 6,087 certificates.

#### DISBURSEMENTS

OTHER PURCHASED SERVICES	41,329.49
TRAVEL	351.00
DUES & FEES	2,560.00
EDUCATOR OF THE YEAR	49,569.46
SPELLING BEE	1,800.00
PROFESSIONAL & TECHNICAL SERVICES	3,827.70
MINI-GRANTS	5,000.00

**TOTAL DISBURSEMENTS** 104,437.65

**ENDING FUND BALANCE, JUNE 30, 2008** **424,564.76**

## Kane County Educator of the Year Awards

The 33<sup>rd</sup> Annual Educator of the Year Awards Dinner was held at the Pheasant Run Resort Mega Center on May 9, 2008. The dinner honored 34 distinguished educators with plaques of recognition. Those who received awards of distinction were:

Award Given	Name	District
Educator of the Year	Terri Dawson	District 300
Regional Superintendent Award	W. Tom Hay	District 300
Regional Superintendent Award	Verene Huizena	District 101
R. B. Mades Associate Educator of the Year	Tammy Chiovari	District 131
Elementary Educator of the Year	Dr. Ann Ramsey	District 304
J.L. Hanson Middle School Educator of the Year	Jonathan E. Gaspar	District 131
D.L. Hoeft High School Educator of the Year	Ronald Edward Brown	District 303
Administrator of the Year	Dr. Charles McCormick	District 302
Private/Parochial Award	Sr. Margaret Gazdik	ClareWoods Academy
Support Staff Award	Randi L. Ochsenschlager	District 129

## Kane County ROE School Safety & Security Team

In September of 2007, the regional superintendent asked each Kane County district superintendent to choose at least one representative for a school safety and security team. The newly constituted team has been meeting monthly at the ROE since that time. Representatives from the Kane County Sheriff's Office were invited and have become team members. The team will continue to meet each month to share best practices, develop school safety & security standards, refine safety and security plans, develop and plan appropriate professional development programs for Kane County educators, students, and parents as well as to address security issues and concerns as they occur.

## School Safety and Security

In the past several years school security and student safety have become major concerns across the nation as well as in Illinois. The Kane County ROE has sponsored numerous related programs that have involved all nine school districts within its jurisdiction. Collaborative program planning continues in this important area, especially in conjunction with the 16<sup>th</sup> Circuit Court Gang Task Force.

- Multi-Hazard Emergency Planning for Illinois Schools – Creating an Action Plan
- PBIS (Positive Behavioral Interventions and Supports)
- Keeping Schools Safe in a Day of Homeland Security

Participants: More than 297 participants

## Juvenile Justice Center

The educational program at the Juvenile Justice Center is administered by the Kane County Regional Office of Education. An intergovernmental agreement between the Regional Office of Education, St. Charles School District, and the Chief Judge assures that the Regional Office of Education is responsible for the educational program for the students at the Juvenile Justice Center. The teachers provide daily instruction to meet the educational needs of the students in a continuous learning calendar. During this year, 574 students received educational services from the Juvenile Justice Center teachers. The education program coordinator serves as a liaison between the center and the students' home school to assure a smooth transition into the regular academic program.

## General Educational Development (G.E.D.)

The Regional Superintendent is delegated with the responsibility of administering the G.E.D. testing program in accordance with the Illinois School Code. This program allows those who are 18 years of age, whose high school class has graduated and have been out of the school system for one year to secure a High School Equivalency Certificate upon completing and passing all tests.

Testing centers have been established in Kane County at the Regional Office of Education in Geneva and Elgin Community College in Elgin. Tests are administered on Saturdays and require at least 3 Saturdays to complete the battery. The Kane County Regional Office of Education has become an official scoring center and has installed equipment for scanning and scoring all tests except the essay portion. A \$35.00 fee is charged to cover the cost of tests, administration of tests, grading, and the certificate.

	<u>7/01/07-06/30/08</u>
GED Registrations	973
Retests	869
Tests Passed	511
Transcripts Processed	700

## Home-Schooling

The Regional Office of Education serves as a resource to those parents who are interested in home-schooling their children. Information is shared with the parents to assist them. A request is made for parents to register with the Regional Office as a home-schooling parent and assure that education is being provided to their children. There are no fees collected for resource information.

## Dropout Intervention Project

The 2007-2008 school year marked the 20<sup>th</sup> year of this project. The goal of the Dropout Intervention Project is to bring "disconnected" youth from 17-21 years of age back into the mainstream of society. As of June 2008, the Project enrolled 77 students in the GED Program. Three hundred eighty-five students were provided dropout interventions.



## Positive Behavior Interventions and Support

The 2007-2008 school year marked the 7<sup>th</sup> year of the PBIS project. This program serves public, private, and residential schools in the regions served by the Kane County ROE. PBIS leads school teams in elementary, middle and senior high schools through a three-to-five year implementation process that enhances the positive behavior and social skills development of all students in support of more effective teaching and learning environments. In addition, PBIS training assists schools in the development of strategies to allow them to comply with Illinois Social and Emotional Learning Standards and the compliance requirements articulated in the IDEA 2004 federal legislation. As of June 30, 2007, seventy schools in the Kane County ROE region serving over 38,000 students are providing positive behavior support through the PBIS process. Six hundred and eight educators have attended the PBIS trainings and Administrator Academies offered by the ROE. In addition, eighty-nine individuals received application and advanced training in Kane County on the School-wide Information System (SWIS) web-based student behavior management data system that is used in PBIS schools throughout the United States, Canada, and other countries worldwide to manage their student discipline data.

## Masters/Doctorate Degree Programs

Aurora University and the Regional Office of Education have collaborated to develop and provide a Masters Degree program for the teachers in Kane County. The teachers may receive their degree through a program of Masters in Teaching or Masters in Educational Leadership. Approximately 1,847 teachers have participated in this program. Aurora University and the Regional Office of Education have collaborated to develop and provide a Doctorate Degree Program. The individuals may receive their degree through a program of Doctorate in Educational Administration or Doctorate in Curriculum.

## Kane County Youth Outreach Program

In 2007-2008 we completed the 23<sup>rd</sup> year of the Kane County Truancy Prevention Program and continued the 20<sup>th</sup> year of the Kane County Dropout Intervention Project.

Kane County had 1,496 "official" referrals from our local schools requesting truancy assistance from our staff. The services provided during the 2007-2008 year were the following:

<u>SERVICES</u>	<u>2007-2008</u>	<u>2006-2007</u>	<u>2005-2006</u>
School Visits	2,950	3,015	3,651
Home Visits	923	956	1,238
Student Contacts	2,715	2,625	3,550
Community Agency Contacts	595	460	832
School Conferences	318	483	523
Regional Conferences	25	15	57
Classroom Prevention Presentations	12*	19*	25
Retrieved Dropouts to GED Program	77	71	85
Juvenile Court Cases	25	27	36
Adult Court Cases	12	11	12

(\*950 served)

Funding: 350,985

<u>SOURCE OF REFERRALS</u>	<u>2007-2008</u>	<u>2006-2007</u>	<u>2005-2006</u>
<u>By District</u>			
U46 Elgin	465	410	413
101 Batavia	17	33	15
129 West Aurora	265	335	344
131 East Aurora	511	554	463
300 Dundee/Carpentersville	182	230	237
301 Central	9	1	4
302 Kaneland	7	4	2
303 St. Charles	28	78	64
304 Geneva	6	4	8
Other	11	5	11
<u>By Grade Level</u>			
Elementary K-5	540	720	610
Middle School	416	557	515
High School	504	377	388
Other	41	0	48
<u>By Gender</u>			
Males	729	837	790
Females	772	817	771
<b>TOTAL</b>	<b>1,496</b>	<b>1,654</b>	<b>1,561</b>

## Regional Safe Schools Program

The Regional Safe Schools Program (RSSP) began with a planning and implementation grant in school year 1996-1997. This program is a result of legislation providing programs for disruptive students who are eligible for suspension or expulsion. The legislature appropriated \$15 million for safe school programs. Regional Offices of Education wrote program grants to access this money. These funds are renewable on an annual basis and are used by Kane County to provide educational programs to disruptive students in a variety of ways. During the 2007 - 2008 school year, Districts U-46, 300, 129, 131, and Mid-Valley (Districts 101, 301, 302, 303, 304), operate alternative to expulsion programs. All the above programs are under the auspices of the Kane County Regional Office of Education.

In 2007 – 2008 approximately 225 students were served in the above programs. They were served at 5 different sites. All of these students were eligible for expulsion or had multiple suspensions. Instead they attended RSSP sites in their local districts. Eighty percent of these students completed the program successfully. Due to the RSSP, expulsions have been reduced by 63% in Kane County since the 1994-1995 school year.

## System of Support, RESPRO Area 1-C

The Kane County Regional Office of Education's role in the system of support is to create a powerful and effective partnership between the System of Support schools and Regional System of Support Provider (RESPRO Area 1-C) to improve teaching and learning, student learning, and the learning community. Support and assistance was provided through direct training, on-site support and technology integration for eligible individual schools and public school districts aligning with the goals articulated in the State's System of Support and No Child Left Behind guidelines.

Funding: \$776,285.00

## Kane County Regional Office of Education Homeless Education Program – *Kane ROE Equal Chance Program*

Homeless children and youth face numerous obstacles in obtaining an education. The goal of the Kane County Homeless Education Program is to provide programs that will ensure the removal of barriers and provide for the enrollment, attendance and educational success for all homeless children. This program offers assistance to families/students, schools, and community agencies, including shelters.

This program is administered by the Area One Lead Program in Will County and funded by the Illinois State Board of Education through the McKinney-Vento Education Assistance Act of 2001.

Funding: 52,336

## Gifted Education

The Regional Office of Education provides support and training to enhance our districts' ability to meet the special needs of students in each respective district.

- ROE State Raising Student Achievement Conference \*
- Illinois Association for Gifted Children State Conference \*
- Kane County Gifted Services Network
- High School Gifted Pilot Project
- Level I & II Gifted Institute Training
- Genius Denied Seminar

Participants: 269

\* Attendance at the two state conferences exceeded 1,200 participants.

## Networks

This system of educator networks is provided to showcase best practices in respective content areas, develop leadership for instructional improvement, solve instructional and assessment concerns, and promote the professional development of teachers in their content areas. Each network meets multiple times each year, depending on the professional needs of the participants and the goals of the respective network.

- Kane County Gifted Services Network
- Kane County Learning Leaders Network
- Kane County Special Education Directors Network
- Reading Leaders Network
- School Safety Network
- Technology Coordinators
- Transportation Directors

Participants: 585

## Illinois Administrators' Academy

Individuals employed in positions requiring a Type 75 certificate as a condition of employment (Illinois School Code Section 5/24A-3) are required to complete a minimum of one Illinois administrators' academy each year.

### Administrators' Academy offerings for 2007-2008:

403 (b) - The Written Plan AA # 695 Academic Strategies to Improve Special Ed. Subgroup Performance #532  
Boys & Girls ARE Different: Closing the Achievement Gap AA #493  
Bullying Prevention in the Elementary School K-8 #197  
Who Moved My Cheese? AA #180  
Classical Functions of Middle School C & I 421 (On-line Course)  
Concepts & Skills for Coaching New Leaders AA # 570  
Conducting Effective Meetings: The Art & Science of Facilitation AA #169  
Discovering Best Practice in Teacher Selection and Development AA #502  
"Dollars and Sense" Finance & Insurance Industries  
ECS 201 - Educator Certification System  
Educational Technology-Learning to Use Networking Resources on the New Web AA #572 (2 Sessions)  
Evaluation that Enhances Professional Practices AA # 27  
Focused Walk Evaluating Student Engagement in Schools AA #247  
Got Stress? Administrator Survival Strategies AA #604  
Harnessing the Power of Data: Effecting Improvement in Schools AA #441  
Impacting AYP through Response to Intervention #525  
Internet Liabilities: Issues for Schools AA #81  
Introduction to the Evaluation of Certified Staff AA #1 (3 Sessions)  
Legal Aspects of Student Records AA # 416  
Local Assessments Aligned with State Standards AA #113  
Managing Mood and Behavior Disorders #597

New Admin. Institute (NAI) V: Culture & Climate & Prof. Learning Comm. AA #560  
PBIS System of Support: A Focus on Secondary & Tertiary Tiers of Support AA #696  
PBIS Universal Team Training AA#6 (2 Sessions)  
Recognizing and Assisting Homeless Students: What Every Educator Needs to Know AA #222 (5 Sessions)  
RtI and Comprehension Instruction RESPRO #641  
RtI Best Practices: Implementing a 3-Tiered Model of Reading Interventions AA #539 Section I  
Seminar on School Finance AA #2  
Social Emotional Learning AA # 381 (2 Sessions)  
Supporting Reading Instruction Through Formative Supervision #365  
Taking RtI to the Next Level  
Ten Essentials for Collaborative Leadership Leading and Learning Together AA #145  
The 21 Indispensable Qualities of a Leader AA #328  
The 360 Degree Leader: Creating a Positive Leadership Culture AA #666  
Training to Select & Develop Great Administrators - Introduction AA #19  
Training to Select & Develop Great Teachers - Advanced Phase II" #50 (2 Sessions)  
Training to Select and Develop Great Admin. Advanced Training Phase II AA #53  
Training to Select and Develop Great Teachers - Introductory #47 (2 Sessions)

Funding: Self Sustaining

Participants: 1,175

## Kane County Human Resources Consortium (KCHRC)

The KCHRC continued to grow substantially in its fifth year. This on-line teacher application system has processed more than 33,000 applications resulting in the hiring of more than 3,000 staff members.

All nine Kane County public school districts contributed funds totaling \$48,000 to support the project. The KCHRC meets twice each month, the first time to deal with KCHRC business and the second for associated professional development.

The KCHRC has received significant acclaim around the state and nation resulting in many inquiries from like entities interested in the program here in Kane County.

Funding (including funding from participating districts): \$48,000+

Participants: 9 of 9 school districts

## Career Awareness & Development & ETC

The State-funded Career Awareness & Development grant was eliminated in 2003. Several collaborative initiatives of the Kane County ROE, VALEES, Northern Kane EFE, the nine Kane County public school districts, and the Illinois School Counselors Academy related to the grant continued to develop on a self-sustaining basis in 2007-2008.

- Illinois School Counselors' Academy programs
- Workshop In Counseling: Emphasizing Student Academic Success by Integrating Career Development and Social/Emotional Learning

Funding: \$18,500 (all partners)

Participants: 55

## Career Cruising

Since May of 2000, the Kane County ROE, Northern Kane EFE, VALEES, and the Illinois School Counselors' Academy have collaborated in developing programs to better integrate career and technical education with the total school educational enterprise, grades K-14. The initial effort (COMET Project) included development of an electronic career portfolio for all students.

The cooperative partners identified the commercial product known as Career Cruising to meet the needs of the electronic portfolio goal. In 2007-2008 all the Kane County middle and high schools were provided Career Cruising site licenses in both the English and Spanish versions. Research indicates variable levels of implementation, but the variety and scope of program use assures that the project will continue. Professional Development training for Career Cruising is provided for teachers and counselors every year.

Funding (all partners): \$16,000                      Participants: 5,000 +

## Sixteenth Circuit Court Gang Task Force

The Kane County ROE is a representative member of the Sixteenth Circuit Gang Task Force as well as a professional development program partner. The most recent program entitled "Mental Health Issues of Offender Populations" was held in Geneva, IL in April, 2008 for 210 participants.

The Sixteenth Circuit Court Gang Task Force collaborative planning team continues to provide programs for teachers for every Kane County Institute Day. On February 29, 2008 they presented a program about the probation process for juveniles to 80 participants.

Funding: \$5,500 (all partners)

## Middle School Endorsement Program

Based on expressed needs of many Kane County teachers for the opportunity to obtain the middle school endorsement to their teaching certificates, the Kane County Regional Office of Education from time to time sponsors programs. These courses were offered on-line through Illinois State University.

Budget: Self Sustaining

## Professional Development

The Regional Office of Education supports a wide variety of activities including institutes, workshops, conferences, networking, technical assistance, information dissemination, and consulting to meet the needs of our schools. These activities are designed to complement the other Kane County Regional Office of Education and district professional development programs. Our office collaborates with local, regional, and state educational partners representing both the public and private sector in creating learning opportunities for the entire Kane County Learning Community. Reading First and System of Support (RESPRO-Area 1) activities supported through No Child Left Behind (NCLB) federal funding are aligned with the goals articulated in the Illinois State Board of Education and the No Child Left Behind guidelines.

### Ed Strategies and General

Area I Planning Group  
Classroom Assessment for Student Learning  
"Dollars and Sense" Finance & Insurance Industries  
Dyslexia: Follow-up  
Effective Rehearsal Technique  
English Department Team Book Study  
Manufacturing the Future: Opportunities, Trends & the New Jobs in Manufacturing

Mental Health Issues of Offender Populations  
NISL-Phase II  
ParaPro Assessment  
Smart & Good High Schools (LINKED)  
SOA Training for ROE Personnel  
Tools for Teaching

### ETC and Career Awareness

Balanced Literacy  
CAHC 590 PUE 1 #9864: Northern Kane - Preparing Students for Life! SEL, Mental Health and Career Development as Interventions Toward Students' Well-Being  
Manufacturing the Future: Opportunities, Trends & the New Jobs in Manufacturing  
The Mathematical World (OEDC 5041)

CAHC 590 PUE 1 #9864: VALEES - Preparing Students for Life! SEL, Mental Health and Career Development as Interventions Toward Students' Well-Being  
Employment Skills in the 21st Cent OEDP 5078

### Gifted

Gifted Education Level I and II Institute Training  
Wikipedia & Blog Training

### Institute

Academic Vocabulary & the New American Lecture  
Adolescent Issues-Anger Management and an Update on Gangs  
An Arena for Success: Equine-Assisted Psychotherapy

Basic Training: Survivor Skills Necessary to Work Effectively with Students & Staff (PARAPROS only)  
Behavior and Difficult Students (PARAPROS only)  
Big Bully on the Playground

Brain Gems for More Effective Teaching  
 Bringing Energy Issues into the Classroom  
 Building Partnerships for America's Future (LINKED go to www.valees.org)  
 Classroom Practices to Improve Writing 3-8  
 Collaboration Academy: Parents and Schools Unite  
 Communication Skills for the Paraprofessional (PARAPROS only)  
 Connecting Kids with Nature  
 Cooperating Teacher Workshop: How to Give & Get the Most out of the Experience  
 CPR Recertification Training for School Nurses/Staff-Emergency Safety Instruction  
 Daily 5 101 K-5  
 Develop Your Presentation & Interview Skills  
 Different is Not Deficient: Understanding and Utilize Personality Differences  
 Diversity in the Classroom "Teaching Children Who Don't Look Like Me"  
 DuKane Institute Day "School Libraries for the Net Generation" (LINKED)  
 Dyslexia: Symptoms, Causes & Solutions  
 Early Identification of Mental Health Issues in Children & Adolescents in the School Setting  
 Exploring Kane County Ecology  
 Fitness for Living  
 Five Keys to Integrating Social Emotional Learning (SEL) into the Classroom  
 Helping Families Facilitate Reading Success  
 Helping Struggling Students: Dynamic Strategies for Content Area Teaching  
 How to Impact Student Achievement and Make a Difference  
 How to Save Time Grading Papers: A Workshop in Holistic Grading & Assessment  
 I'm Not Fried but I'm Extra Crispy & Other Teaching Revelations!  
 Informational Reading and Writing in the Primary Grades  
 Initiating Social Emotional Literacy  
 Introduction to Excel - A Great Classroom Management Tool  
 Jolly Phonics & Jolly Grammar-A Way to Empower Young Children  
 Juvenile Probation and Kane County Area Gangs  
 Keeping Schools Safe in a Day of Homeland Security  
 Kindergarten/Preschool Conference

**Lang Arts/Reading/Writing**

Effective Teamwork  
 English Department Curriculum Work: Assessment Book Study  
 Increasing Students' Phonemic Awareness Skills English & Spanish

**Learning Technology Services**

Introducing Microsoft Office 2007  
 Microsoft Technical Briefing

**Math and Science**

Addressing the Professional Development Needs of MS Math Teachers  
 AgTech Tour for Teachers

**Networks**

New Principal Mentoring

**PBIS**

Developing Your Universal System, Part 2  
 PBIS Overview - U50  
 PBIS Secondary Interventions S100  
 PBIS Secondary Interventions S200  
 PBIS SET Training (School-wide Evaluation Tool)  
 PBIS Workshop-Developing Your Universal System - U100 & U200 (AA #6) (2 Sessions)

Language Learning that Lasts  
 Making Behaviorally Challenged Students Successful in General & Spec. Ed Classrooms  
 Matching Instruction & Assessment Using Memory Pathways Math and Literacy  
 Mathematics Roundtable Leadership Discussion  
 Max Teaching Using Literacy Skills to Help Students Learn Subject Matter  
 Metadot Training  
 New Directions in Development Speech Disorders  
 No Child Left Inside, Take 'em to the River  
 No Excuses University  
 Overview of Response to Intervention/Legal Issues in Education  
 PBIS Overview for Schools (Administrator Academy #540)  
 PowerPoint Workshop (Using Office 2007)  
 Practical Strategies for Meeting the Needs of "Grey-Area" Students K-8  
 Reaching Reluctant Readers in Grades K-5  
 Reading and Writing in any Content Area Classroom  
 Reading in the Content Areas  
 Reading with Meaning  
 Realistic Expectations in Relationships  
 Recognizing and Assisting Homeless Students; What Every Administrator Needs to Know #222  
 Renewing the Teacher Within  
 Scholastic Cinema II  
 Self-Injury & Social Skills Deficits & Strategies for Working with Spectrum Disorders  
 Seven Habits of Highly Effective People-Overview  
 Strategies for Teaching English Language Learners  
 Teaching Our Students to be Respectful in a Very Rude World  
 Teen Suicide: Prevention, Assessment & Intervention  
 The Brain and Addiction  
 The Other Ways We Impact Kids  
 Tools for Teaching  
 Twenty First Century Learning  
 What Effective Teachers Do!  
 What is "appropriate force"?  
 What You Can Do to Help Minority Students Succeed in School  
 Working with K-1 Struggling Readers  
 Working with Students Who Are ADD/ADHD (PARAPROS only)

Reading Leaders Network Meeting-CBM-RTI  
 Team Leader Facilitation Training

New Administrator Certification & Online Application

Strategic Planning Utilizing the IL PBIS Implementation-PBIS  
 School Profile Form  
 SWIS Facilitator Training  
 SWIS Training  
 U300: Implementing PBIS in your School, Universal System Part 3 (1Day)

**School Safety & Security**

Health / Life Safety Processing System Training  
Regional Superintendent Staff Health / Life Safety Processing System Training

**Starlab**

Starlab Basic Training

Participants: 7,151

**Technical Assistance to Schools**

Part of the responsibility of the Kane County Regional Office of Education is to provide technical assistance to schools and educators as they work to improve curriculum, instruction, and learning. This assistance includes presentations, facilitation, consulting, coaching, and training.

**Learning Technology Services**

The Regional Office of Education provides support and training in many areas of technology. To determine the activities to provide, a needs assessment is given during the year to teachers and monthly technology coordinator meetings occur. Monthly Technology Coordinator meetings are used to communicate information from the Illinois State Board of Education, and also allow dialogue between districts.

Learning Technology Services also provides technical support within the Regional Office of Education to maintain connectivity to the Illinois State Board of Education electronic systems including Teacher Certification and Administrators' Academy. It also continues to support the Safe Schools programs within Kane County school districts and support the technology implementation at the Kane County Juvenile Justice Center (JJC).

For questions concerning this program, contact Phil Morris (pmorris@kaneroe.org).

During this past year the following services have been provided for school districts:

- Hosting of 7 district and private school websites
- Online Registration for workshops with digital encryption
- Professional Development Library accessible from ROE website
- Maintain LiveScan Fingerprint equipment for Fingerprinting of new teachers and bus drivers in Kane County
- Maintain Blackboard 8.0 for online courses and teacher collaboration
- Hosting of over 6,000 teacher email accounts
- Digital Imaging of 180,000 records
- Consultation for KCHRC On-Line Application
- Hosted specialized training for school districts (i.e. Tech Assessment, Blackboard, Microsoft etc.)
- Implemented Follett Destiny
- Coordinated Websense Web Filter cooperative purchase

**Area One West Learning Technology Center**

The Illinois State Board of Education established the Learning Technology Center program for the purpose of providing a coordinated, statewide support and infrastructure which assists school districts in planning for, implementing, assessing results and educating school staff in the use of technology and telecommunications in curricular, instructional and administrative functions. More information on the Learning Technology Center program can be found at <http://www.isbe.net/curriculum/elearning/default.htm>

Through this purpose, the Kane County Learning Technology Center has provided the following services using funding from the ISBE contract.

- Attending Statewide Meetings
- Facilitated or Assisted schools with Technology Planning
- Provided funding for Conference Attendance for Technology Coordinators and Teachers
- Assisted Districts with funding and training for Reading / Math Initiatives using Technology
- Provide technical support for connection to the Illinois Century Network (ICN) (<http://www.illinois.net>)
- Provide network consultation for the design and implementation of Local Area Networks (LANs) and Wide Area Networks (WANs)
- Help schools with the monitoring, management, and troubleshooting of their WANs
- Work with ICN Staff to assist in troubleshooting
- Assist schools with E-Rate applications to the Federal government (<http://www.sl.universalservice.org>)
- Provide Internet Safety Training, including Parent Presentations (<http://www.isafe.org>)
- Provide Support and Training for the following online resources available to all Kane County Schools:
  - United Streaming (<http://www.unitedstreaming.com>)

For questions concerning this program, contact Phil Morris (pmorris@kaneroe.org).

Funding: \$68,233

## Fingerprinting

The Regional Office of Education provides fingerprinting services for all our public school districts. The Illinois School Code requires all new employees to have both a State and FBI criminal background check. During the last year, over 4,500 people were fingerprinted. During FY08, the addition of private schools occurred due to changing legislation. The electronic submission of fingerprints allows the ROE to receive results usually within a 24 hour period so a school district can begin employment immediately.

## GIS (Geographic Information System)

The Kane County Regional Office of Education (ROE) offers school districts the opportunity to request the assistance of its geographic information system (GIS). The GIS allows for the creation of custom maps and geographic analyses for school districts. GIS has already proven to be a useful tool for Kane County school districts in the matter of attendance boundaries. The software allows a school district to calculate student populations in a geographic area. Attendance areas can be broken down, allowing for smaller geographic units of measurement and the presentation of a variety of school boundary scenarios. Some transportation concerns can be represented in GIS. Bus routes, bus stops, and hazardous roads can be included in the GIS.

GIS allows school districts to create and take advantage of updatable maps to address geographic concerns. While not the answer to all problems, GIS proves its utility by presenting information in a graphical manner.

## National Institute For School Leadership

Thru September 2007, the Kane County Regional Office of Education sponsored a trainer of trainers model executive development program for school principals. There are plans to continue this blue ribbon program provided by the National Institute For School Leadership (NISL).

Participants: 18                      Funding: \$40,000

## Kane County Regional Board of School Trustees

The Regional Board of School Trustees is an elected body with the sole responsibility of action on detachment/annexation petitions regarding boundary changes between school districts in the region. The board meets on the first Monday of January, April, July and October. Meetings may be canceled due to lack of agenda items. Douglas Johnson, Regional Superintendent, is the ex-officio Secretary for the Board of Trustees. The members of the Regional Board of School Trustees are:

Penny Wegman, <b>President</b>	Elgin Township	Term Exp. 2011
G. Michael Stoffa, <b>Vice President</b>	Blackberry Township	Term Exp. 2011
Doug Jones	Aurora Township	Term Exp. 2009
Chad Koppie	Rutland Township	Term Exp. 2013
Mary Shepro	St. Charles Township	Term Exp. 2013
Stephen R. Wallace	Sugar Grove Township	Term Exp. 2009
Kevin Williams	Geneva Township	Term Exp. 2013

## District Transportation Analysis

7/1/2007 - 06/30/2008

District	Average Number of Regular Trans pupils Transported Per Year	Transportation Miles					Direct Costs				
		Regular	Vocational	Special Ed	Nonreimbursable	Total	Regular	Vocational	Special Ed	Nonreimbursable	Total
U46 ELGIN	23,178.00	2,049,298	0	2,566,295	508,435	5,124,028	8,417,458	0	10,235,380	2,028,876	20,681,714
101 BATAVIA	3,438.38	291,268	12,800	413,657	41,603	759,328	1,029,898	45,205	1,440,769	146,932	2,662,804
129 AURORA WEST	4,080.41	553,310	0	517,647	121,663	1,192,620	5,719,838	0	2,144,724	1,583,321	9,447,883
131 AURORA EAST	0.00	0	0	435,285	50,294	485,579	0	0	2,529,582	107,227	2,636,809
300 DUNDEE	14,349.00	1,170,400	0	1,127,935	201,036	2,499,371	5,992,603	0	5,750,531	2,058,660	13,801,794
301 CENTRAL	2,910.50	452,042	20,936	230,442	42,263	745,683	1,569,358	89,026	856,731	174,873	2,689,988
302 KANELAND	3,811.02	539,997	0	426,926	30,313	997,236	2,174,877	0	1,158,632	118,466	3,451,975
303 ST CHARLES	10,092.29	1,034,493	41,110	486,016	199,639	1,761,258	3,770,148	152,234	2,109,343	969,234	7,000,959
304 GENEVA	4,527.00	458,110	16,480	311,972	3,977	790,539	3,222,204	41,418	847,510	26,028	4,137,160
<b>TOTAL 2007-2008</b>	<b>66,386.60</b>	<b>6,548,918</b>	<b>91,326</b>	<b>6,516,175</b>	<b>1,199,223</b>	<b>14,355,642</b>	<b>31,896,384</b>	<b>327,883</b>	<b>27,073,202</b>	<b>7,213,617</b>	<b>66,511,086</b>

\*Information can be found at Illinois State Board of Education Website/Pupil Transportation Claim Reimbursement\*

## Classroom Buildings in Use – 7/01/07 – 6/30/08

### CLASSROOM BUILDINGS IN USE - 7/1/07 - 6/30/08

DISTRICT	Elementary School		Middle or Junior High School		Senior High School		Mobile Classroom		Other, Special Ed, Voc Ed, Etc.	
	FY08	FY07	FY08	FY07	FY08	FY07	FY08	FY07	FY08	FY07
	U46 ELGIN	40	40	8	8	5	5	63	57	6
101 BATAVIA	6	6	1	1	1	1	8	4	1	0
129 AURORA WEST	11	11	4	4	1	1	6	5	3	2
131 AURORA EAST	12	12	3	3	1	1	0	0	5	2
300 DUNDEE	17	15	4	3	3	2	22	16	2	4
301 CENTRAL	4	3	2	1	1	1	0	5	0	0
302 KANELAND	4	4	1	1	1	1	11	11	1	1
303 ST CHARLES	12	12	3	3	2	2	30	28	1	0
304 GENEVA	5	5	2	2	1	1	0	0	0	1
<b>TOTAL</b>	<b>111</b>	<b>108</b>	<b>28</b>	<b>26</b>	<b>16</b>	<b>15</b>	<b>140</b>	<b>126</b>	<b>19</b>	<b>16</b>



## Assessed Valuation Per ADA – School Property – Bonded Indebtedness

### FINANCE REPORT ASSESSSED VALUATION PER ADA - SCHOOL PROPERTY - BONDED INDEBTEDNESS

DISTRICT	ASSESSSED VALUATION FY2007	ASSESSSED VALUATION PER FY07 ADA	TOTAL SCHOOL TAX RATE	ORIGINAL COST	BONDED INDEBTEDNESS	BONDED INDEBTEDNESS	PCT CHG	% OF BONDING POWER USED
				OF PROPERTY & EQUIPMENT AS OF 6-30-07	AS OF 6-30-07	AS OF 6-30-08		AS OF 6-30-08
U46 ELGIN	5,482,153,397	151,261	4.7900%	559,386,698	364,109,311	339,318,830	-6.8%	48.1%
101 BATAVIA	1,273,437,876	212,581	4.5085%	79,218,323	42,615,000	113,455,000	166.2%	24.2%
129 AURORA WEST	1,813,669,891	165,048	3.6643%	119,669,894	132,597,290	126,811,000	-4.4%	53.0%
131 AURORA EAST	922,714,082	84,442	2.9390%	153,267,352	79,544,982	76,641,536	-3.7%	62.5%
300 DUNDEE	3,584,879,010	205,860	4.4871%	274,342,797	271,720,725	266,493,822	-1.9%	54.9%
301 CENTRAL	641,307,456	232,183	4.2881%	88,556,711	57,106,014	50,356,411	-11.8%	64.5%
302 KANELAND	856,026,598	221,606	4.0380%	113,893,117	70,575,447	103,829,834	47.1%	59.7%
303 ST CHARLES	3,311,810,391	261,500	3.6660%	240,626,103	172,395,000	165,445,000	-4.0%	37.7%
304 GENEVA	1,408,160,114	254,892	4.3894%	131,043,927	107,547,714	172,020,266	59.9%	55.3%
TOTAL FY2008	19,294,158,815	181,374	---	1,760,004,922	1,298,211,483	1,414,371,699	8.9%	48.8%
TOTAL FY2007	17,731,921,157	171,096	---	1,641,247,647	---	---	7.3%	49.4%
TOTAL FY2006	16,069,855,366	160,236	---	1,453,114,151	---	---	-15.4%	64.5%
TOTAL FY2005	14,531,228,055	146,790	---	1,508,395,145	---	---	30.6%	54.6%
TOTAL FY2004	13,280,610,126	131,772	---	1,408,405,075	---	---	3.0%	58.0%
TOTAL FY2003	11,904,908,410	122,076	---	1,229,590,967	---	---	5.4%	61.4%

**FY 2008 Life Safety****FY 2008 LIFE SAFETY**

#	DISTRICTS	TOTAL SITES	FY2008 NOTATIONS	AVERAGE PER SITE	FY2007 NOTATIONS	CHANGE 2007 TO 2008	Percentage 2007 TO 2008
U46	ELGIN	62	1088	17.55	1090	(2)	99.82%
101	BATAVIA	10	326	32.60	174	152	187.36%
129	AURORA WEST	22	801	36.41	369	432	217.07%
131	AURORA EAST	22	1009	45.86	596	413	169.30%
300	DUNDEE	32	904	28.25	558	346	162.01%
301	BURLINGTON	9	152	16.89	113	39	134.51%
302	KANELAND	9	175	19.44	196	(21)	89.29%
303	ST. CHARLES	21	382	18.19	335	47	114.03%
304	GENEVA	12	245	20.42	228	17	107.46%
	<b>TOTALS</b>	199	5082	25.54	3659	1423	138.89%

**FY 2008 Construction and Occupancy Permits****FY 2008 CONSTRUCTION AND OCCUPANCY PERMITS**

#	DISTRICT	NEW SITES	REPAIRS RENOVATION	ADDITIONS	TOTAL REQUESTED	APPROVED OCCUPANCY
U46	ELGIN	0	37	0	37	25
101	BATAVIA	0	12	2	14	10
129	AURORA WEST	0	36	0	36	15
131	AURORA EAST	0	3	0	3	11
300	DUNDEE	0	11	4	15	4
301	BURLINGTON	0	12	0	12	12
302	KANELAND	1	0	0	1	1
303	ST. CHARLES	0	23	0	23	8
304	GENEVA	0	7	0	7	9
	<b>TOTAL</b>	1	141	6	148	95

**Certified Personnel – 7/01/07 - 6/30/08**

		DEGREES - SALARIES - EXPERIENCE - STAFF/STUDENT RATIOS						
DISTRICT	TOTAL	DOCTORS & ED SPEC/CAS DEGREE	MASTERS DEGREE	BACHELORS DEGREE	TEACHERS	AVG. SAL.	% of TRS	AVG. SAL.
	CERTIFIED (INCLUDE PART TIME)				AIDES (INCLUDE PART TIME)	FULL-TIME CERTIFIED TEACHERS		CERTIFIED ADMIN
U46 ELGIN	2855	50	1735	1070	425	\$54,674	9%	\$96,280
101 BATAVIA	470	10	339	121	87	\$67,478	0%	\$95,529
129 AURORA WEST	864	11	593	260	170	\$59,780	9%	\$90,816
131 AURORA EAST	1307	18	508	781	237	\$49,543	0%	\$91,643
300 DUNDEE	1321	31	877	413	391	\$57,992	5%	\$100,066
301 CENTRAL	261	9	147	105	31	\$49,103	9%	\$96,178
302 KANELAND	377	5	235	137	77	\$52,344	0%	\$90,929
303 ST CHARLES	1105	24	759	322	356	\$54,444	8%	\$94,755
304 GENEVA	452	14	340	98	124	\$65,552	1%	\$105,836
		% = TRS AMOUNT PAID BY DISTRICT				# TRS PAYMENT VARIES		
<b>TOTAL FY2008</b>	<b>9012</b>	<b>172</b>	<b>5533</b>	<b>3307</b>	<b>1898</b>	<b>\$56,768</b>		<b>\$95,781</b>
		1.91%	61.40%	36.70%	21.06%			
<b>TOTAL FY2007</b>	<b>7976</b>	<b>165</b>	<b>5280</b>	<b>2531</b>	<b>1718</b>	<b>\$53,407</b>		<b>\$89,409</b>
		2.07%	66.20%	31.73%	21.54%			
DISTRICT	AVG. YRS. EXPERIENCE	ENROLLMENT PER CERTIFIED STAFF MEMBER FY2008	ENROLLMENT PER CERTIFIED STAFF MEMBER FY2007	TEACHER TO ADMINISTRATIVE STAFF RATIO	SUPPORT STAFF	ENROLLMENT TO SUPPORT STAFF RATIO	ENROLLMENT PER FALL HOUSING RPT FY2008	
	TEACHING IN ILLINOIS							
U46 ELGIN	12.0	14.3	14.7	18.1	2,252	18.1	40,709	
101 BATAVIA	9.1	13.5	14.0	19.6	106	59.8	6,337	
129 AURORA WEST	10.6	14.6	16.5	11.8	457	27.5	12,579	
131 AURORA EAST	8.5	10.2	17.6	26.7	189	70.6	13,347	
300 DUNDEE	10.3	14.8	15.2	23.6	332	59.0	19,594	
301 CENTRAL	10.7	12.1	12.2	21.8	159	19.8	3,154	
302 KANELAND	10.2	11.7	11.8	18.0	125	35.3	4,409	
303 ST CHARLES	11.2	12.5	13.6	16.5	419	32.9	13,787	
304 GENEVA	10.7	13.3	13.7	20.5	252	23.9	6,012	
<b>Average</b>	<b>10.4</b>	<b>13.0</b>	<b>14.4</b>	<b>19.6</b>	<b>4,291</b>	<b>38.5</b>	<b>119,928</b>	
<b>PRIOR YEAR</b>	<b>11.0</b>	<b>14.4</b>	<b>12.9</b>	<b>17.3</b>	<b>4,003</b>	<b>40.3</b>	<b>117,795</b>	

## School Enrollment – 7/01/07 – 6/30/08

### FY08 Enrollment Enrollment - Public Schools - September 2007

District	School	FY07	FY08	Pre-K	K-5	6-8	9-12
U46	Elgin	40,379	40,709	1,130	18,552	9,381	11,646
101	Batavia	6,261	6,337	50	2,946	1,483	1,858
129	Aurora West	12,503	12,579	393	5,990	2,825	3,371
131	Aurora East	12,707	13,347	749	6,916	2,866	2,816
300	Dundee	19,161	19,594	560	8,962	4,428	5,644
301	Central	2,941	3,154	30	1,360	786	978
302	Kaneland	4,146	4,409	45	2,199	1,052	1,113
303	St. Charles	13,751	13,787	99	6,118	3,249	4,321
304	Geneva	5,946	6,012	50	2,584	1,424	1,954
<b>TOTAL FY08</b>			<b>119,928</b>	<b>3,106</b>	<b>55,627</b>	<b>27,494</b>	<b>33,701</b>
<b>TOTAL FY07</b>			<b>117,795</b>	<b>2,848</b>	<b>55,118</b>	<b>26,887</b>	<b>32,942</b>

## ISBE Federal and State Revenue

### ISBE FEDERAL & STATE REVENUE FISCAL YEAR ENDING JUNE 30, 2008

	STATE AID	STATE - OTHER	FEDERAL	TOTAL	\$ PER ADA
U46 ELGIN	68,831,087	38,795,841	22,961,012	130,587,940	3,638
101 BATAVIA	3,114,830	3,564,594	629,256	7,308,680	1,264
129 AURORA WEST	26,706,128	12,917,147	8,880,983	48,504,258	4,502
131 AURORA EAST	48,704,372	25,335,390	13,175,727	87,215,489	8,086
300 DUNDEE	16,188,042	21,810,907	9,421,596	47,420,545	2,779
301 CENTRAL	3,053,398	2,987,899	114,197	6,155,494	2,270
302 KANELAND	3,710,048	4,231,829	232,281	8,174,158	2,182
303 ST CHARLES	4,858,790	9,859,230	1,103,530	15,821,550	1,292
304 GENEVA	2,171,347	4,723,276	156,746	7,051,369	1,326
<b>TOTAL FY2008</b>	<b>177,338,042</b>	<b>124,226,113</b>	<b>56,675,328</b>	<b>358,239,483</b>	<b>3,434</b>
<b>TOTAL FY2007</b>	<b>171,039,715</b>	<b>98,020,419</b>	<b>51,876,430</b>	<b>320,936,564</b>	<b>3,031</b>
<b>CHANGE</b>	<b>3.6%</b>	<b>21.1%</b>	<b>8.5%</b>	<b>10.4%</b>	<b>11.7%</b>

**\*\*Additional Financial and District information may be obtained at [www.isbe.net](http://www.isbe.net).**

**Kane County ROE  
FY08 Annual Report Index**

Administrators' Academy .....	10	Learning Technology Services .....	13
Assessed Valuation .....	16	Legal Reference .....	5
Budget - County Portion .....	5	Legislative Development .....	2
Buildings in Use.....	17	Life Safety.....	17
Career Awareness .....	10	Middle School Endorsement.....	11
Career Cruising .....	11	Networks .....	9
Certified Personnel.....	18	Organization Chart.....	4
Cohorts .....	8	PBIS .....	8
Dropout Intervention.....	7	Permits .....	17
Educational Service Region.....	3	Professional Development .....	11
Educator of the Year .....	6	Regional Board of School Trustees .....	14
Fingerprinting .....	14	Regional Board of Trustees .....	14
Gang Task Force .....	11	RESPRO .....	9
GED .....	7	Revenue.....	19
Gifted Education .....	9	Safe Schools.....	9
GIS – Geographic Information System.....	14	School Enrollment .....	19
Home Schooling.....	7	School Safety .....	7
Homeless Education.....	9	School Safety & Security Team.....	7
Institute Fund .....	6	Superintendents.....	3
Juvenile Justice Center.....	7	Technical Assistance.....	13
KCHRC.....	10	Transportation Analysis .....	15
Learning Technology Center .....	13	Youth Outreach.....	8