



KANE COUNTY REGIONAL OFFICE OF EDUCATION

ANNUAL REPORT
JULY 1, 2001—JUNE 30, 2002



Dr. Clem Mejia, Regional Superintendent
Julie Vallejo, Associate Superintendent

210 South Sixth Street
Geneva, Illinois 60134

Phone: 630-232-5955
Fax: 630-208-5115
www.kaneroe.org

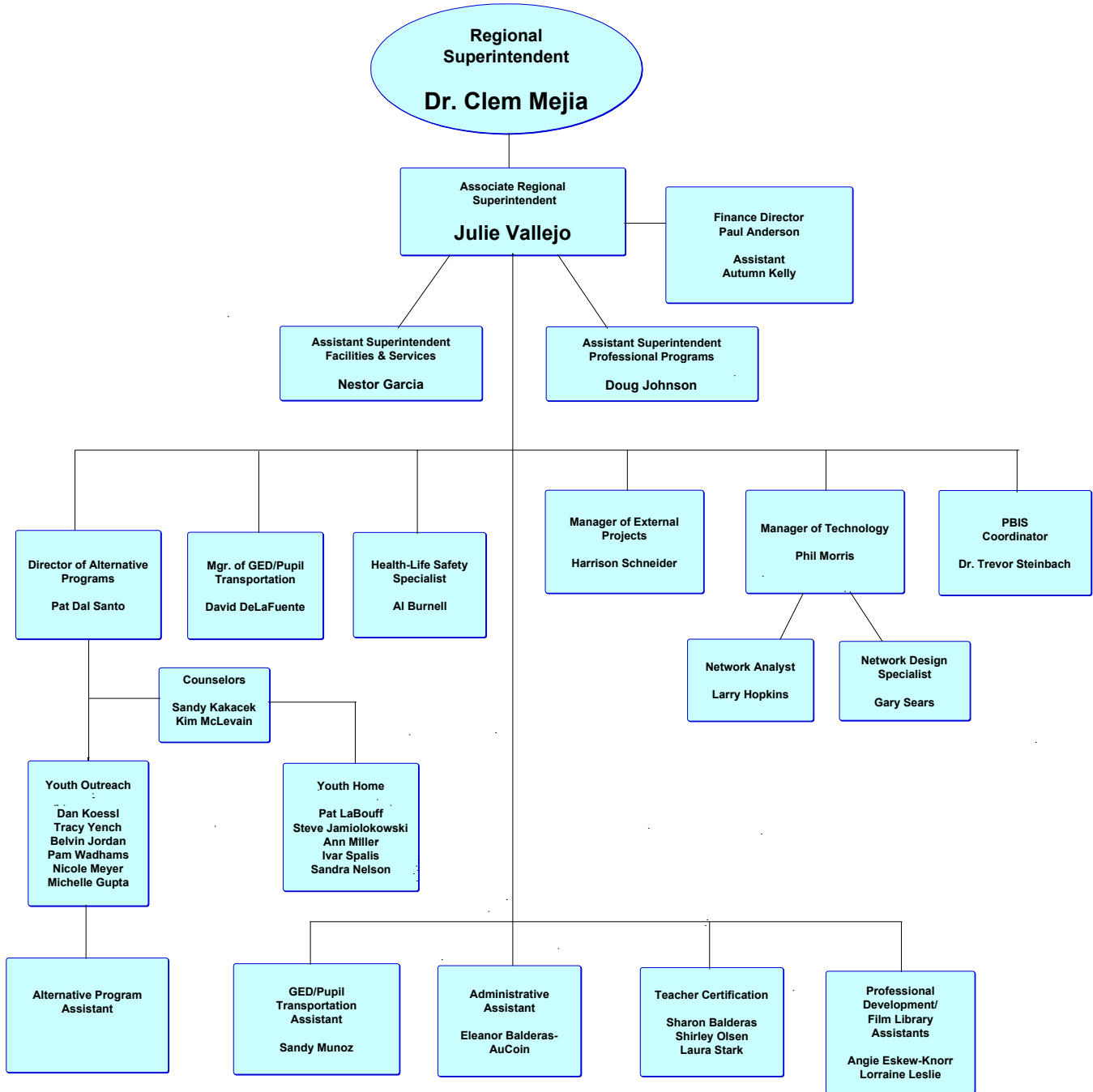
TABLE OF CONTENTS



Regional Office of Education Staff, Mission Statement	1
Legal Reference for Annual Report.....	2
Representative Activities and Duties of the Regional Office Staff	2
Regional Office of Education County Budget.....	2
Institute Fund Report	3
Kane County Educator of the Year Awards	3
Kane County Regional Board of Trustees.....	4
Kane County Visual Media Coop.....	4
School Safety and Security	4
Juvenile Justice Center	4
General Educational Development (G.E.D.)	5
Home-Schooling	5
Dropout Intervention Project	5
Positive Behavior Interventions and Support (PBIS)	5
Teen Dating Violence Grant.....	5
Kane County Outreach Program.....	6
Regional Safe Schools Program	7
Reading Kits	7
School Improvement and Quality Review Assurance	7
Masters/Doctorate & Counselors' Cohort	7
Gifted Education.....	8
Science Literacy.....	8
Illinois Administrator's Academy	9
Business Partners Initiative.....	9
Networks.....	9
Professional Development	10, 11
On-Site Technical Assistance to Schools	11
Kane County Government Computer Courses	11
Career Awareness & Development	12
Learning Technology Services	12
Area One West Learning Technology Center	13
COMET Project.....	13
School Finance Report.....	14
Assessed Valuation Per ADA.....	14
Classroom Buildings.....	14
Life Safety	15
Construction & Occupancy Permits	15
Certified Personnel	16
Enrollment—Public and Non-Public Schools	17
Attendance	18
Transportation Analysis.....	18
Federal & State Revenue	19
Revenue & Expenditure Analysis.....	20, 21
Staff Directory	22

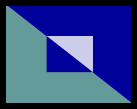


ORGANIZATION CHART



Our Mission is to provide leadership in the learning community by:

- *Developing Educational Resources*
- *Facilitating Learning*
- *Collaborating with all Educational Partners*



Legal Reference for Annual Report

This Annual Report is designed in part to meet the provisions of Chapter 105, Article 3, Section 5/3-6 and Section 5/3-15.8 of the School Code of Illinois. The report of schools visited and meetings attended as required by Section 5/3-5 is provided quarterly to the Public Service Committee of the Kane County Board. In addition, as established in Chapter 105, Article 2, Section 5/2-3.62 in the School Code of Illinois, the Regional Office of Education shall provide services to support administrators and teachers in the planning, implementation, and evaluation of education for gifted children, computer technology education, mathematics, science, and reading. The Regional Office of Education may provide training, technical assistance, coordination and planning in other program areas such as school improvement, career guidance, alcohol/drug education and prevention, and alternative education.

Representative Activities and Duties of the Regional Staff

Processed approximately 1,920 new applications for teaching certificates and registered over 7,379 certificates.

Visited each of the 143 public school buildings in the Region to monitor life/safety requirements.

Appointed instructors for school bus driver classes, held initial training classes for 181 new drivers and refresher classes for 914 drivers. Distributes information on bus safety by meeting School District Transportation Directors.

Assisted the State Board of Education during its recognition visits of Kane County School Districts. Provided school officials and the general public with information regarding area school districts and the School Code of Illinois.

Reviewed and approved, or returned for correction, a multitude of State Board of Education reports and applications filed by local school districts.

Superintendent Mejia served on the following committees: Governors Literacy Advisory Board; Governors Commission on Re-Writing the Illinois School Code; Phi Delta Kappa; Kane County Child Advocacy Board; Kane County Workforce Development Board; Illinois Association of Regional School Superintendents; President for Illinois Association of County Officials; Adjunct Faculty at Aurora University and Board Chairman for the Association for Individual Development.

Associate Superintendent Vallejo served on the following committees: Board Member for the Communities in Schools; Board Member for Education to Careers; Advisory Board Member of State Safe Schools; Member of Council for Exceptional Children; Member of the Illinois Association of Regional School Superintendents; Member of the Community Crisis Team Committee; Member of Chicagoland Leadership Committee; Chairman of Kane County Safe Schools Committee; President of the Northern Illinois Chapter of Phi Delta Kappa; State Scholarship Committee; Adjunct Faculty at Aurora University and Chairman of the Area V Phi Delta Conference held at Pheasant Run Resort in St. Charles.

Budget—County Portion Only

Funds for the operation of the Kane County Regional Office of Education are provided by Kane County. This does not include salaries for the Regional Superintendent and the Assistant Superintendent, both of whom are paid by the State of Illinois. Nor does it include wages and operating expenses of the Visual Media Co-op, which is funded by membership fees or for the Professional Development Services Division which is funded by the Illinois State Board of Education. The following budget and expenditure figures are based on the County's fiscal year, which runs from December 1st through November 30th.

	<u>FY-00</u>			<u>FY-01</u>			<u>FY-02</u>
	Budget	Actual	Pct	Budget	Actual	Pct	Budget
Salaries	217,794	218,446	100.3%	224,328	226,757	101.1%	224,328
Operations & Other	49,941	49,469	99.1%	59,379	54,288	91.4%	64,878
County Computer Training	20,000	20,000	100.0%	0	0		0
TOTAL	287,735	287,915	100.1%	283,707	281,045	99.1%	289,206



Institute Fund Report

The majority of expenditures from the Institute Fund were used to assist local school districts in providing professional development programs to their staff by paying all or part of the costs associated with the Kane County-Wide March 2nd Institute Day and their in-service programs. A total of \$107,756.75 was expended from July 1, 2001 to June 30, 2002 for teacher training programs and workshops. Some of the programs included are Administrators Summer Workshop, the Library Selection Workshop and Kane County Educator of the Year. The Advisory Board Members are Dr. Cindy Miller, Chuck Gilmore, Linda Voris, Jan Thietje, John Duffy, Deborah Schmalholz and Guila G. Zeigler.

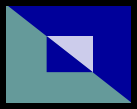
INSTITUTE FUND FINANCIAL REPORT JULY 1, 2001 THROUGH JUNE 30, 2002

BEGINNING FUND BALANCE, JULY 1, 2001		272,250.92
RECEIPTS		
1-YEAR REGISTRATIONS	6,205.00	
4-YEAR REGISTRATIONS	26,020.00	
5-YEAR REGISTRATIONS	118,700.00	
6-YEAR REGISTRATIONS	2,550.00	
10-YEAR REGISTRATIONS	200.00	
REGISTRATION RENEWALS-PRIOR YEARS	3,349.00	
ISSUANCE FEES	13.00	
DUPLICATE FEES	1,072.00	
TEACHER CERTIFICATION	75,600.00	
ISBE CERTIFICATION REGISTRATION	(48,196.00)	
INTEREST	4,257.37	
ISBE RPDRC - CERTIFICATE RENEWAL	3,000.00	
EDUCATOR OF THE YEAR	12,063.41	
IARSS REGISTRATIONS	6,245.25	
TOTAL RECEIPTS	211,079.03	
DISBURSEMENTS		
INSTITUTE DAY	15,341.65	
PURCHASED SERVICES	45,197.64	
TRAVEL EXPENSE	1,436.38	
SUPPLIES & SERVICES	4,649.10	
OTHER OBJECTS	7,108.85	
TRANSFERS	2,121.00	
EDUCATOR OF THE YEAR	31,902.13	
TOTAL DISBURSEMENTS	107,756.75	
ENDING FUND BALANCE, JUNE 30, 2002		375,573.20

Kane County Educator of the Year Awards

The Twenty-seventh Annual Educator of the Year Awards Dinner was held at Pheasant Run Resort in St. Charles on April 19, 2002. The dinner honored 31 distinguished educators with plaques of recognition. Winners are selected by a committee of retired teachers and Phi Delta Kappa members. Those who received awards of distinction were:

<u>Award Given</u>	<u>Name</u>	<u>District</u>
Educator of the Year	Janet Hornbostel	District 303
Regional Superintendent Award	Carol D. Wilson	District 129
Regional Superintendent Award	Dr. Judith Ball	District U46
R. B. Mades Special Educator of the Year	Gary Tollaksen	District 131
Elementary Educator of the Year	Kathy Bratcher	District 101
J.L. Hanson Middle School Educator of the Year	Judith A. Leavey	District 304
D.L. Hoeft High School Educator of the Year	Kay Fredericks	District 300
Administrator of the Year	Dr. John F. Murphy	District 304
Private/Parochial Educator of the Year	Susan Hartley Brown	St. Rita of Cascia
Support Staff of the Year	Mary Maher	District 303



Kane County Regional Board of Trustees

The Regional Board of School Trustees is an elected body with the sole responsibility of action on detachment/annexation petitions regarding boundary changes between school districts in the region. The board meets on the first Monday of January, April, July and October. The President may call special meetings. Meetings may be canceled due to lack of agenda items. Clem Mejia, Regional Superintendent, is the Secretary for the Board of Trustees. The members of the Regional Board of School Trustees are:

	<u>Term Expires</u>		<u>Term Expires</u>
Kay Clancy, President Wayne, Illinois	2007	Lyle Oncken Aurora, Illinois	2007
Dave Henderson Carpentersville, Illinois	2007	G. Michael Stoffa Elburn, Illinois	2005
Vacant	2005	George Irizarry Elgin, Illinois	2005
Barbara Vondrak Geneva, Illinois	2005		

Kane County Visual Media Coop

The Kane County Visual Media Cooperative was established in 1938 to serve the teachers and staff in our region by providing educational 16mm films, videotapes and laserdiscs for their classroom use. The cooperative contains over 2,000 educational titles.

The cooperative is open to all public and non-public institutions in Kane County. The Regional Office of Education serves as the administrative agent for the cooperative. Funding for the cooperative is obtained by fees paid by districts and institutions.

For the 2002-2003 school term, the cost of renting a film, videotape or laserdisc was \$2.96 per week. This past year, the cooperative received over 2,500 requests, with an average of 45 requests per week.

For questions concerning this program, contact Phil Morris (pmorris@kane.k12.il.us)

School Safety and Security

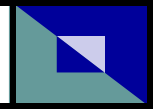
In the past several years school security and student safety have become major concerns across the nation as well as in Illinois. Kane County ROE #31 has sponsored numerous related programs that have involved all nine school districts within its jurisdiction. Collaborative program planning continues in this important area.

- Crisis Management
- Proactive School Security Planning
- Stitches & Stones Bullying Prevention
- School Searches & Seizures & Safety Legal Workshops
- PBIS Positive Behavior Interventions and Supports

Participants: More than 350

Juvenile Justice Center

An agreement between the Regional Office of Education, St. Charles School District and the Chief Judge assures that the Regional Office of Education is responsible for the educational program for the students at the Juvenile Justice Center. The teachers provide daily instruction to meet the educational needs of the students in a year round program. During this year, 508 students received educational services from the Juvenile Justice Center teachers.



General Educational Development (G.E.D.)

The Regional Superintendent is delegated with the responsibility of administering The G.E.D. testing program in accordance with the Illinois School Code. This program allows those who are 18 years of age, whose high school class has graduated and have been out of the school system for one year to secure a High School Equivalency Certificate upon completion and passing all tests.

Testing centers have been established in Kane County at Waubensee Community College in Sugar Grove and at the Regional Office of Education in Geneva. The tests require two days and are administered on consecutive Saturdays. The Kane Co. R. O. E. has become an official scoring center and has installed equipment for scanning and scoring all tests except the essay portion.

A \$30.00 fee is charged to cover the cost of tests, administration of tests, grading, and for the certificate.

	Fiscal Year 2001 7/1/00-6/30/01	Fiscal Year 2002 7/1/01-6/30/02
G.E.D. Registrants	1,294	1,216
Retests	411	1,093
Tests Passed	1,564	795
Transcripts Processed	286	363

Home-Schooling

The Regional Office of Education serves as a resource to those parents who are interested in home-schooling their children. Information is shared with the parents to assist them. A request is made for parents to register with the regional office as a home-schooling parent and assure that education is being provided to their children. There are no fees collected for resource information.

Dropout Intervention Project

The 2001 – 2002 school year marked the 14th year of this project. The goal of the Dropout Intervention Project is to bring “disconnected” youth from 16-21 years of age back into the mainstream of society. As of June 2002, the Project enrolled 83 students in the GED Program. Twelve of these students received their GED and 85% of the enrolled students continued in the program.

Positive Behavior Interventions and Support

The 2001-2002 school year marked the 1st year of the project. This program serves both Kane and Lake Counties from the Kane County ROE. PBIS leads school teams in elementary, middle and senior high schools through a three year process that increases the positive behavior of all students. As of June 30, 2002 sixteen (16) schools in Kane County serving over 11,000 students are currently involved. Forty-eight (48) administrators have attended the PBIS Administrator Academies in Kane County.

Funding \$117,000

Teen Dating Violence Grant

Under the auspices of the Illinois Violence Prevention Authority, the Kane County ROE formed a partnership with the Community Crisis Center of Elgin and Gifford St School. This community – school – Regional Office of Education partnership developed and taught an anti-dating violence curriculum to students in the middle school Safe Schools program at Gifford St School. This six month planning grant enabled the partnership to pilot the curriculum and gain valuable knowledge regarding middle school attitudes towards dating violence.

Funding \$7,500

Kane County Youth Outreach Program

In 2001 – 2002 we completed the 17th year of a joint Kane – DeKalb County Truancy Prevention Program and continued the 13th year of the Kane County Dropout Intervention Project. Kane County serves as the administrative agent for the two-county program under the Directorship of Associate Superintendent Vallejo.

Kane County had 1,478 “official” referrals from our local schools requesting truancy assistance from our staff. The services provided during the 2001 – 2002 school year were the following:

SERVICES	2000-2001	2001-2002
School Visits	3,357	3,774
Home Visits	1,652	1,098
Student Contacts	5,935	3,775
Community Agency Contacts	726	898
School Conferences	793	785
Regional Conferences	176	85
Classroom Prevention Presentations	27	30 *
Retrieved Dropouts to GED Program	85	83
Juvenile Court Cases	47	151
Adult Court Cases	42	82

The Kane County Regional Office of Education also formed a partnership with the Elgin Police Department to sponsor a Police Truancy Officer for the Elgin Area. The officer provided home visits, school visits, and participated in individual student service plan activities.

*(1,570 served)

Funding: \$302,294

<u>SOURCE OF REFERRALS</u>	<u>2000-2001</u>	<u>2001-2002</u>
<u>By District</u>		
U46 Elgin	535	384
101 Batavia	5	9
129 West Aurora	402	339
131 East Aurora	584	400
300 Dundee/Carpentersville	184	182
301 Burlington	3	1
302 Kaneland	2	2
303 St. Charles	19	19
304 Geneva	8	6
Other	37	136
<u>By Grade Level</u>		
Elementary K-6	902	722
Middle School	566	406
High School	240	179
Other	71	171
<u>By Gender</u>		
Males	918	696
Females	857	666
TOTAL	1,779	1,478



Regional Safe Schools Program

The Regional Safe Schools Program (RSSP) began with a planning and implementation grant in school year 96-97. This program is a result of legislation providing programs for disruptive students who are eligible for suspension or expulsion. The legislature appropriated \$15 million for safe school programs. Regional Offices of Education wrote programs grants to access this money. These funds are renewable on an annual basis. These funds are used by Kane County to provide educational programs to disruptive students in a variety of ways. During the 2001 - 2002 school year, Districts U-46, Mid-Valley (Districts 101, 301, 302, 303, 304), and District 300 operated alternative to expulsion programs. All the above programs are under the auspices of the Kane County Regional Office of Education.

In 2001 – 2002 approximately 139 students were served in the above programs. They were served at 9 different sites. All of these students were eligible for expulsion. Instead they attended RSSP sites in their local districts. Eighty percent of these students completed the program successfully. Due to the RSSP expulsions have been reduced by 63% in Kane County since the 1994- 1995 school year.

Funding: \$768,225

Reading Kits

Reading is a top priority for all Kane County Schools and schools throughout the state. To help children master this important skill in the early grades, the Illinois State Board of Education provided every Pre-Kindergarten-2nd Grade classroom and building principals with reading kits. The Reading Kits are designed to reinforce the importance of focusing early reading instruction on four strands: word study, vocabulary and fluency, comprehension, and writing as it relates to reading.

- Project CRISS Training (Creating Independence through Student-owned Strategies)
- Meeting the Challenge (Pre-K—2)
- Meeting the Challenge (Grade 3-5)
- Illinois Snapshot of Early Literacy (ISEL)

Funding \$8,000

School Improvement & Quality Review Assurance

The Illinois State board of Education Quality Assurance process consists of an internal review, which each school conducts annually. The Internal/ External Review takes a broader focus the school's activities, including climate and community issues, professional development and the mission and goals of your schools. The review is designed to ascertain the success of the school's programs in student performance and progress with respect to the Illinois State Goals for Learning Standards and local learning objectives. The Kane County Regional Office of Education's role is to support and guide schools through this ongoing school improvement process so that teaching and learning are improved every year.

The support and assistance as defined by ISBE provided in the 2001-2002 school year included:

Extensive Formal Training:	Involving 9 District and 16 schools
Formal training:	Involving 9 Districts and 62 schools
Technical assistance (also includes support through mini-grants):	Involving 9 districts and 53 schools

Funding \$70,125

Masters/Doctorate & Counselor's Cohort

Aurora University and the Regional Office of Education have collaborated to develop and provide a 36-hour Masters degree program for the teachers in Kane County. The teachers may receive their degree through a program of Masters in Teaching or Masters in Educational Leadership. Approximately 1,200 teachers have participated in this program.

Aurora University and the Regional Office of Education have collaborated to develop and provide a Doctorate Degree Program. The individuals may receive their degree through a program of Doctorate in Educational Administration or Doctorate in Curriculum. Approximately 120 educators are actively involved in this program.

Northern Illinois University and the Regional Office of Education are collaborating in offering a school counselors certification and masters degree program. The program is 2.5 years in duration with 23 participants. Classes began in January, 2001 and are being held at the Kane County Regional Office of Education in Geneva.

Gifted Education

The Regional Office of Education provides support and training to enhance our districts' ability to meet the special needs of students in each respective district's gifted and accelerated/enrichment program.

Activities Supported

- Comprehensive Gifted Education Six Day Training Institute
- Illinois Association for Gifted Children State Conference *
- ISBE/ROE State Gifted Conference *
- Kane County Gifted Coordinators Network
- High School Kane-DuPage Gifted Network
- Setting Kids Up for Success
- How We Learn Impacts How We Teach
- Identification, Characteristics and Strategies for the Gifted
- Problem-Based Learning and the Gifted
- Meeting the Needs of Young Gifted Kids in the Regular Classroom
- High School Gifted Project Pilot
- Reaching and Teaching the Gifted Student

Participants 586

Funding \$23,750

* Attendance at the two state gifted conferences exceeded 1500 participants

Scientific Literacy

Scientific literacy is a professional development program which supports scientific literacy (the improvement of math, science, and technology instruction) efforts in our schools. This support included workshops, conferences, training of trainers, on-site technical assistance, and networking among both public and private sectors.

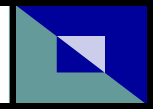
Activities Supported

- Forest Preserves as Classrooms
- Math You Can Use on Monday, Geometry
- Math You Can Use on Monday, Estimation and Measurement
- Math You Can Use on Monday, Number Sense and Algebraic Reasoning
- Building Connections with Math and Literature
- Student Centered Assessment and Problem Solving
- Scientific Inquiry Workshop
- Science is Everywhere!
- CBL Training Project
- Engaged Learning in Earth Science Using Technology
- Engaged Learning in Physics Using Technology
- Engaged Learning in Biology Using Technology
- Engaged Learning in Chemistry Using Technology
- Basic Starlab Trainings
- Advanced Starlab Trainings
- Starlab Technical Assistance
- Fun with Science and Agriculture
- AgTech Tour for Teachers Institute
- Math ISAT and PSAE
- Best Practices in Science Education
- Classroom Connect
- Wildlife in the Classroom
- How We Learn Impacts How We Teach
- Using Graphic Organizers
- The NCTM Standards: A User Guide
- Setting Students Up For Success
- River Tales
- Cooperative Learning
- Environmental Choices for the 21st Century
- EnergyNet Project Support
- Chicago Wilderness Network
- Increasing Learning Through Effective Assessment
- Great Beginnings in Mathematics
- High School Mathematics Curriculum Showcase
- High School Science Curriculum Showcase
- Grades 6-8 Mathematics Curriculum Showcase
- Grades 6-8 Science Curriculum Showcase
- Elementary Mathematics Curriculum Showcase
- Elementary Science Curriculum Showcase
- Meeting the Illinois Science Learning Standards
- Illinois Technology and Leadership for Change
- Illinois Technology Conference
- Math Materials for Teaching
- Mighty Acorn's Training
- Science Networks
- Kane County Student Environmental Expo
- State Science Conference (ISTA) *
- State Math Conference (ICTM) *
- Illinois Health Association Conference *
- Kane County Groundwater Project
- Watershed Conference
- Fox River Riverwatch Monitoring Project
- Technology Workshop Support

Participants 1802

Funding \$78,364

* not included in total



Illinois Administrator's Academy

All individuals employed in positions requiring a Type 75 certificate as a condition of employment (Illinois School Code Section 5/24A-3) are required to attend a minimum of one Illinois Administrators' Academy Required Strand program during each two-year phase. This requirement includes any department, special programs, or central office personnel who are involved in the evaluation of any certified staff. The Regional Office of Education is responsible for issuing certificates for all Illinois Administrators' Academy offerings within its jurisdiction.

On August 10, 2002, new administrator certificate renewal legislation was signed into law. The new process will begin on July 1, 2003.

Illinois Administrators' Academy Offerings for 2001-2002

- Introduction to Evaluation of Certified Staff (four sessions)
- Cognitive Coaching (two sessions)
- Ventures for Excellence, Teacher Selection and Development Phase I, II and III
- Ventures for Excellence, Administrator Selection and Development Phase I and II
- Strengthening the Evaluation Skills of Administrators
- Best Practices in Reading
- Proactive School Security and Planning
- Raising High School Reading Achievement
- Standards for the Principal/ Administrator (two sessions)
- Legal Aspects for Interviewing and Hiring
- Leadership for Sustained Educational Systems Change
- Career Development ETC and Counseling
- Technology for School Administrators
- Crisis Management
- PBIS – Positive Behavior Interventions and Supports
- Relationships Are All There Is

Participants: 427

Funding: \$23,691

Business Partners Initiative

The Business Partners Initiative currently involves a partnership between Dukane Corporation of St. Charles and First Security Systems of Naperville, Illinois to provide overhead projectors, LCD projectors, and other various multimedia products to schools at a significant below retail price. During this past year there were 38 purchases from 29 different school buildings.

Networks

This system of educator and expanded learning community networks are provided to showcase best practices in each respective content area, develop leadership for school-based instructional improvement, solve instructional and assessment concerns, and promote the professional development of teachers in their content areas. The networks each meet multiple times each year, depending on the professional needs of the participants and the goals of each network.

- Kane County Gifted Networks
- Kane-Dupage High School Gifted Network
- Environmental Science Network
- Physical Science Network
- Foreign Language Network
- Special Education Directors Network
- Learning Leaders Network
- Mentoring Network
- Technology Network
- Education to Careers Network

Participants 414

Funding \$5,600

Professional Development

The Regional Office of Education supports a wide variety of activities including institutes, workshops, conferences, networking, information dissemination, technical assistance and consulting to meet the needs of our schools. These activities are designed to compliment the other Kane County Regional Office of Education and districts' professional development programs. Our office collaborates with local, regional, and state educational partners representing both the public and private sector in creating learning opportunities for the entire Kane County Learning Community.

Learning Standards, ISAT, PSAE, and Assessment

Prairie State Achievement Exam (PSAE)
 Illinois Learning Standards Training
 Increasing Learning Through Effective Assessment
 Effective Teaching Strategies for a Standards-Led System
 Looking at Student Work: Improving Learning by Understanding
 Implementing and Assessing Standards at the Classroom Level
 Illinois Schools and the Implementation of the Illinois Learning Standards
 Student-Centered Assessment and Problem Solving
 Understanding By Design
 Standards-Aligned Classrooms Training
 Standards-Aligned Classrooms Initiative
 Achieving the Illinois Standards Workshops
 Creating Writers: Using the 6 Trait Scoring Guide as a Teaching Tool
 Creating Skillful Writers: Standards and ISAT
 Illinois Elementary Math Standards Workshops
 Math ISAT and PSAE
 Implementing and Assessing Illinois Learning Standards
 ISAT Reading Training
 ISAT Writing Training
 ISAT Math Training
 Standards and Classroom-Based Assessment
 Data Management – Advanced
 Teaching to the Standards
 The NCTM Standards: A User Guide
 Meeting the Illinois Science Elementary Learning Standards
 Understanding and Practicing with the ISAT Math Rubric
 Data Analysis for School Improvement
 Rubric Writing
 Illinois Alternative Assessment

Fundamental Learning Areas and Special Interest

Foreign Language Teachers Network
 Native American Dance Workshop for Educators
 Pioneer Sholes School Teacher Training
 Webquests
 Standards-Aligned Classrooms Initiative
 Multiple Intelligences
 Learning Styles
 Mentoring Training
 Educators Methods of Multicultural Teaching
 Teachers Negotiate Class and Ethnicity
 True Stories of Excellent Teachers in Urban Schools
 Issues on Education: Low SES and Asian Populations
 Evaluating Curricula for Its Portrayal of Societal Groups
 Developing Interactive Listening Skills in the Foreign Language Classroom
 Eld'n "The Killer Virus"
 Humor in the Classroom
 Adult facilitation for Conflict Resolution in Schools
 Marco Polo Internet Content for the Classroom
 Classroom Connect
 Building Connection with Math and Literature
 Co-op Corps "Foreign Language"
 Blending Grammar & Culture: An Experience in Spanish, Italian, and French

Educational Strategies and Initiatives

Setting Student Up For Success: Study Tips and Teaching Strategies
 Using Graphic Organizers: Organizing to Learn and to Teach
 How We Learn Impacts How We Teach
 Regional Professional Development Review Committee Training
 Creating a Climate that Celebrates Teaching and Learning
 Positive Behavior Interventions and Supports Team Training
 Curriculum Connections: Internet Researches
 How We Learn Impacts How We Lead
 Standards for the Administrator as the Instructional Leader in the 21st Century
 The Role of the Administrator in Induction and Mentoring Programs
 Teacher Mentoring Program
 Cognitive Coaching
 Orientation to the Baldrige Criteria for Leaders
 Illinois Technology and Leadership For Change
 The Diversity Challenge: Truly Teaching Other Peoples' Children
 Effective Integration of the Internet
 Inspiration
 Hand-on iMovie Seminar
 Eld'n "The Killer Virus"
 Cooperative Learning
 Understanding By Design
 Engaging learners
 Effective Teaching Strategies for a Standards-Led System
 Engaged Learning with Webquest
 National Board Professional Teaching Standards Certification
 Performance Assessment
 Reflective Practice: Teachers as Learners
 Evidence of Excellence
 Teacher Mentor Program Conference
 Cooperative Discipline
 Peer Observation and Partners in Coaching
 Problem-Based Learning
 Project CRISS
 Differentiation of Instruction
 Teaching Assistants Training

Special Education and School Support Services

Educating Everybody's Children
 Special Education Directors Network
 The Diversity Challenge: Truly Teaching Other Peoples' Children
 Characteristics of Autism
 Pediatric Assessment: Honing Nursing Skills for the School Environment
 Handwriting Without Tears
 Bilingualism: Learning the Language and Language for Learning
 Kane County Special Education and Student Support Services Conference
 Strategies for Effective Management of Student Attention and Behavioral Difficulties
 Community Living Independence in Adulthood for People with Disabilities
 CAPD and NVLD: New Diagnoses and Treatments
 Special Education and Certification Update
 The Functional Analysis Process and Behavior Intervention Plans
 Collaborative Instruction at the Middle and High School Levels
 Community Supports and Independent Living for People with Disabilities
 Early Childhood Blended Classes
 Bipolar Disorder
 Implementation of the "Boys/Girls Town" Model
 Transition Planning for Students with Cognitive Limitations



Professional Development Con't

Reading and Writing

Creating Skillful Writers: Using the 6 Trait Scoring Guide as a Teaching Tool
Improving Reading Through Literature Circles
Reading Network
New Teacher Writing Workshop
Balanced Early Literacy: Research and Practice
Illinois Snapshot of Early Literacy
Improving Student Reading Comprehension and Fluency
Improving Student Comprehension and Reading Skills in all Content Areas
DuKane School Library/Media Institute
Creating Skillful Writers: Standards and ISAT
ISAT Writing
Meeting the Challenge, Elementary
Teaching Reading Strategies in Literature Circles and Book Clubs
River Tales: Using Children's Literature to Teach about the Fox River Watershed
Comprehension Strategies: Teaching our Students to Construct Meaning

Structures for Developing Literacy in the Primary Grades
Reading Strategies for 6-12 Content Area Teachers
Guiding Students Through Non-Fiction text
Building Independent Readers
Literacy, Laughter, and Learning: Balanced Literacy
Handwriting Without Tears
Shared and Guided Reading
Booster Lessons for the Writing ISAT
Improved Reading Through Literature Circles
Building Connections with Math and Literature
Best Practices in Reading
Meeting the Challenge, Early Literacy
Creating Skillful Writers: Standards and ISAT
Step Up to Writing
Project CRISS

Participants 5,515 Funding \$114,000

On-Site Technical Assistance to Schools

Part of the responsibility of the Kane County Regional Office of Education is to provide on-site technical assistance to schools and educators as they work to improve curriculum, instruction, and learning. This assistance includes presentations, facilitation, consulting, coaching, and training.

Kane County Government Computer Courses

The Regional Office of Education has helped design and coordinates a Technology Training Program funded by Kane County Government for its employees. This program uses the ROE computer lab during available times to train on various topics including Microsoft Office, Introduction to the Internet, Email, WordPerfect, and Lotus.

For questions concerning this program, contact Phil Morris (pmorris@kane.k12.il.us)

Workshop Title	Number of Workshops Held	Number of Attendees
Advanced Microsoft Excel 2000	5	55
Advanced Microsoft Word 2000	6	81
Building a Kane County Intranet Site	4	23
Introduction to Kane GIS	5	38
Introduction to Microsoft Access	1	15
Introduction to Microsoft Excel 2000	9	93
Introduction to Microsoft PowerPoint 2000	5	31
Introduction to Microsoft Word 2000	10	78
Introduction to Using a Kane County PC	7	26
Project	2	3
Outlook Basic Training	3	46
Total	57	489

Career Awareness & Development

The Regional Office of Education implements the Illinois State Board of Education's Career Awareness and Development grant program. A large portion of the funds provide the mini-grants funds to support career awareness and development training activities for middle schools staffs (6th – 8th grade educators) which will support and complement school district Education-to-Careers district initiatives. As a result of their career awareness and development experience, educators in grades K-8 will be better prepared to provide a comprehensive program of coordinated career development experiences through planned activities in the context of the fundamental learning areas.

- Education to Careers, It Starts with Us
- Career Awareness and Development Pilot
- Making Job Shadowing Meaningful
- The Changing Nature of Work
- Who will Tell Your Story? Building a Meaningful Career Portfolio
- Preparing Young Men and Women for Non-Traditional Careers
- Creating Career Awareness Classroom Activities
- Will Your Work Fit -Traditional Careers
- Creating Career Awareness Classroom Activities
- Will Your Work Fit Your Life Priorities?
- Design and Build a Comprehensive Career System for the 21st Century
- Illinois School Counselors' Academy

Participants: 8 of 9 eligible school districts

Funding: \$46,172

Learning Technology Services

The Regional Office of Education provides support and training in many areas of technology. To determine the activities to provide during the year, a needs assessment is given during the year to teachers and monthly technology coordinator meetings occur. Monthly Technology Coordinator meetings are used to communicate information from the Illinois State Board of Education, and also allow dialogue between districts.

Learning Technology Services also provides technical support within the Regional Office of Education to maintain connectivity to the Illinois State Board of Education electronic systems including Teacher Certification and Administrator's Academy. It also continues to support the Safe Schools programs within Kane County school districts and support the technology implementation at the Kane County Juvenile Justice Center (JJC).

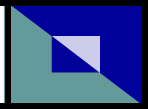
For questions concerning this program, contact Phil Morris (pmorris@kane.k12.il.us)

During this past year the following services have been provided for school districts:

- Hosting of 7 district and private school websites
- Online Registration for workshops with digital encryption security
- Professional Development Library accessible from ROE Website
- Coordinated rebuilding ROE Website <http://www.kaneroe.org>
- Hosting of over 5,000 teacher email accounts
- ROE Weekly sent via email to over 200 constituents each week
- Digital Imaging of records
- Hosted Specialized training for school districts (i.e. SASI, Tech Assessment, etc.)

There were approximately 35 workshops held during the school year and summer for teachers. Various topics included:

- Hyperstudio
- Windows XP
- Using Digital Cameras and Scanners
- One Computer Classroom
- Microsoft FrontPage
- Best Practices in Science Education Eld'n "The Killer Virus"
- Microsoft Office Series
- Creating a Wireless Classroom
- Inpiration
- Engaged Learning with WebQuests
- PC Troubleshooting



Area One West Learning Technology Center

The Illinois State Board of Education established the Learning Technology Center program for the purpose of providing a coordinated, statewide support and infrastructure which assists school districts in planning for, implementing, assessing results and educating school staff in the use of technology and telecommunications in curricular, instructional and administrative functions. More information on the Learning Technology Center program can be found at <http://www.isbe.net/learn-technology/ltc/ltc.htm>

Through this purpose, the Kane County Learning Technology Center has provided the following services using funding provided through the contract from ISBE.

- Provided resources to schools to assist with the integration of technology in their school improvement plan by promoting the use of the Illinois School Improvement Website (<http://ils.i.isbe.net>)
- Attending Statewide Meetings
- Facilitated or Assisted schools with Technology Planning
- Hosted several Peer Review Sessions for Technology Plan Approval
- Provided funding for Conference Attendance for Technology Coordinators and Teachers
- Assisted Districts with funding and training for Reading / Math Initiatives using Technology
- Purchased Global Positioning System (GPS) Units for Kane Schools to use
- Provide technical support for connection to the Illinois Century Network (ICN) (<http://www.illinois.net>)
 - Provide network consultation for the design and implementation of Local Area Networks(LANS) and Wide Area Networks (WANS)
 - Help schools with the monitoring , management, and troubleshooting of their WANS
 - Work with ICN Staff to assist in troubleshooting
- Assist schools with E-Rate applications to the Federal government (<http://www.sl.universalservice.org>)

For questions concerning this program, contact Phil Morris (pmorris@kane.k12.il.us)

Workshop Title	Number of Attendees
Creating a Wireless Classroom	15
Dreamweaver 4 Level 1	8
Engaged Learning w/WebQuests	9
Mac OS X Training	18
One Computer Classroom	14
PC Troubleshooting	22
Security and Firewall Administration	10
Troubleshooting Windows 2000	18
Using Microsoft FrontPage	5
Introduction to Photoshop 6.0	24
MarcoPolo Internet Content for the Classroom	30
Classroom Connect	31
Total Teachers Served	209

COMET Project

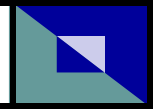
COMET stands for "Comprehensive Opportunity Model for Education & Training", a collaborative project of the Kane County Regional Office of Education, the Valley Education for Employment System (VALEES); the Northern Kane Education for Employment System, the Valley Education-to-Careers Partnership, the Elgin Education-to-Careers Partnership, and the Illinois School Counselors' Academy. The project was initiated in May of 2000. The primary goal of COMET continues to be to "design and implement a comprehensive K-12 career development system that is linked to school improvement plans, and learning standards, emphasizes education-to-careers student outcomes, and involves collaboration between schools, parents, and community." In addition to "in kind" and financial support from member entities, the Illinois State Board of Education Education-to-Careers steering committee provided a \$50,000 grant through Counselors' Academy and the ETC partnerships to support the project for 2001-2002. The project provided some money and significant consulting/management services to seven COMET pilot project districts. The results have been shared among participants and at the state level. As planned, the COMET concept continues to evolve as it is extended into neighboring interested districts.

**ASSESSED VALUATION PER ADA -
SCHOOL PROPERTY -
BONDED INDEBTEDNESS**

DISTRICT	ASSESSED VALUATION FY2001	ASSESSED VALUATION PER FY02 ADA	TOTAL SCHOOL TAX RATE AS OF 6-30-01	ORIGINAL COST OF PROPERTY & EQUIPMENT AS OF 6-30-01	BONDED INDEBTED- NESS AS OF 6-30-01	BONDED INDEBTED- NESS AS OF 6-30-02	PCT CHG	% OF BONDING POWER USED AS OF 6-30-01
U46ELGIN	3,205,153,528	92,684	5.0947%	382,372,083	264,204,663	308,683,341	16.8%	59.7%
101 BATAVIA	700,819,199	131,483	4.3276%	83,873,882	59,065,000	57,195,000	-3.2%	61.1%
129 AURORA WEST	1,062,177,096	109,062	4.0182%	105,058,411	96,277,380	116,360,000	20.9%	65.7%
131 AURORA EAST	477,675,044	49,658	4.3795%	94,088,097	46,273,653	46,969,827	1.5%	70.2%
300 DUNDEE	1,862,003,397	121,099	4.1154%	74,696,518	91,646,726	149,546,593	63.2%	35.7%
301 CENTRAL	300,491,878	140,574	5.1772%	42,990,568	51,572,333	51,572,332	-0.0%	124.4%
302 KANELAND	375,580,409	147,801	4.8407%	47,389,289	19,053,444	18,253,573	-4.2%	36.8%
303 ST CHARLES	1,882,841,608	180,429	4.0110%	183,216,203	129,355,000	174,458,666	34.9%	49.8%
304 GENEVA	747,028,056	160,869	4.8599%	103,693,002	92,581,924	86,071,829	-7.0%	89.8%
TOTAL FY2001	10,613,770,215	112,429	---	1,117,378,053	---	1,009,111,161	18.7%	58.0%

CLASSROOM BUILDINGS IN USE - 7/1/01 - 6/30/02

DISTRICT	ELEMENTARY SCHOOL		MIDDLE OR JUNIOR HIGH SCHOOL		SENIOR HIGH SCHOOL		MOBILE CLASSROOM		OTHER SPECIAL ED, VOC ED, ETC	
	FY02	FY01	FY02	FY01	FY02	FY01	FY02	FY01	FY02	FY01
U46 ELGIN	38	37	7	7	4	4	187	187	1	1
101 BATAVIA	6	6	1	1	1	1	0	0	0	0
129 AURORA WEST	12	11	3	3	1	1	3	1	0.5	1.5
131 AURORA EAST	12	12	3	3	1	1	0	3	0.5	0.5
300 DUNDEE	12	13.5	4	4	3	2.5	23	11	1	1
301 CENTRAL	3	3	1	1	1	1	0	0	0	0
302 KANELAND	2	2	1	1	1	1	13	11	1	1
303 ST CHARLES	11	10	3	3	2	2	32	5	1	1
304 GENEVA	6	4	1	1	1	1	0	0	0	0
TOTAL	102	98.5	24	24	15	14.5	258	218	5	6
CHANGE	3.5		0		0.5		40		-1	



FY 2002 LIFE SAFETY

DISTRICTS	TOTAL SITES	FY2002 NOTATIONS	AVERAGE SITES	FY2001 TOTAL	CHANGE
U46 ELGIN	51	491	9.6	616	(125)
101 BATAVIA	8	67	8.4	48	19
129 AURORA WEST	18	131	7.3	248	(117)
131 AURORA EAST	16	101	6.3	184	(83)
300 DUNDEE	20	171	8.6	220	(49)
301 BURLINGTON	5	28	5.6	37	(9)
302 KANELAND	4	59	14.8	76	(17)
303 ST. CHARLES	15	142	9.5	144	(2)
304 GENEVA	7	50	7.1	40	10
TOTALS	144	1,240	8.6	1,613	(373)

FY 2002 CONSTRUCTION AND OCCUPANCY PERMITS

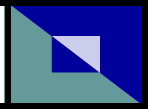
DISTRICT	NEW SITES	REPAIRS/ RENOVATIONS	ADDITIONS	TOTAL REQUESTED	APPROVED
U46 ELGIN	8	15	5	28	22
101 BATAVIA	0	2	0	2	2
129 AURORA WEST	0	0	0	0	0
131 AURORA EAST	0	8	0	8	8
300 DUNDEE	4	9	9	22	13
301 BURLINGTON	0	0	0	0	0
302 KANELAND	0	0	0	0	0
303 ST. CHARLES	0	2	0	2	1
304 GENEVA	1	1	1	3	2
TOTALS	13	37	15	65	48

CERTIFIED PERSONNEL - 7/1/01 TO 6/30/02

DEGREES - SALARIES - EXPERIENCE - STAFF/STUDENT RATIOS

DISTRICT	TOTAL CER- TIFIED (INCLUDE PART TIME)	DOCTORS & EDUC SPEC/CAS DEGREE	MASTERS DEGREE	BACHELORS DEGREE	TEACHERS AIDES (INCLUDE PART TIME)	AVE. SAL. FULL-TIME CERTIFIED TEACHERS	%	AVE. SAL. CERTIFIED ADMIN	%
U46ELGIN	2822	70	1627	1125	637	\$48,041	9%	\$86,206	9%
101 BATAVIA	449	9	281	159	76	\$40,096	0%	\$92,111	9%
129 AURORA WEST	762	8	373	381	187	\$50,118	9%	\$77,105	9%
131 AURORA EAST	749	20	335	394	132	\$38,027	0%	\$69,627	0%
300 DUNDEE	1192	27	676	489	335	\$46,159	4%	\$80,122	9%
301 CENTRAL	174	2	99	73	39	\$52,769	9%	\$78,367	9%
302 KANELAND	234	4	133	97	30	\$44,702	8%	\$77,868	9%
303 ST CHARLES	822	29	487	306	213	\$43,930	0%	\$83,093	#
304 GENEVA	375	11	216	148	145	\$50,244	9%	\$84,954	9%
		% = TRS AMOUNT PAID BY DISTRICT						# TRS PAYMENT VARIES	
TOTAL FY2001	7579	180	4227	3172	1794	\$46,010		\$81,050	
		1.9%	45.1%	33.8%	19.1%				
TOTAL FY2000	7046	179	3640	3227	1659	\$45,201		\$76,871	
		2.1%	41.8%	37.1%	19.1%				

DISTRICT	AVE YRS EXPERIENCE TEACHING IN ILLINOIS	ENROLLMENT PER CERTIFIED STAFF MEMBER FY2002	ENROLLMENT PER CERTIFIED STAFF MEMBER FY2001	TEACHER TO ADMINISTRATIVE STAFF RATIO	OTHER SUPPORT STAFF	ENROLLMENT TO SUPPORT STAFF RATIO	ENROLLMENT PER FALL HOUSING RPT FY2002
U46 ELGIN	13.0	13.5	13.9	16.0	1,814	20.9	37,998
101 BATAVIA	12.0	12.9	14.3	19.4	77	75.0	5,776
129 AURORA WEST	9.8	14.6	14.5	14.2	428	26.0	11,110
131 AURORA EAST	19.7	14.5	14.9	15.6	190	57.3	10,888
300 DUNDEE	12.1	14.4	16.1	16.5	502	34.2	17,157
301 CENTRAL	14.0	13.3	13.1	14.8	103	22.4	2,306
302 KANELAND	12.7	12.2	13.1	15.7	74	38.7	2,862
303 ST CHARLES	12.9	14.3	12.2	13.2	579	20.3	11,749
304 GENEVA	6.8	13.5	13.7	16.9	56	90.6	5,071
TOTAL FY2001	12.5	13.8	14.0	15.7	3,823	27.4	104,917
TOTAL FY2000	12.7	13.2	14.1	15.9	3490	28.6	99,805



FY02 ENROLLMENT REPORT PUBLIC SCHOOLS - SEPT, 2001

DIST	SCHOOL	TOTAL	PRE-K	K-5	6-8	9-12
U46	ELGIN	37,998	678	19,157	8,517	9,646
101	BATAVIA	5,776	47	2,678	1,411	1,640
129	AURORA WEST	11,110	258	5,303	2,506	3,043
131	AURORA EAST	10,888	0	6,129	2,319	2,440
300	CARPENTERSVILLE	17,157	353	8,308	3,849	4,647
301	CENTRAL	2,306	15	1,018	590	683
302	KANELAND	2,862	20	1,351	676	815
303	ST CHARLES	11,749	93	5,322	2,771	3,563
304	GENEVA	5,071	34	2,410	1,245	1,382
		104,917	1,498	51,676	23,884	27,859

	ENROLLMENT Sept-2001	ENROLLMENT Sept-2000	PCT CHANGE	2002 HIGH SCHOOL GRADUATES	BEGINNING ENROLLMENT GRADES 9-12	HIGH SCHOOL DROPOUTS GRADES 9-12	NON-PUBLIC REPORTED ATTENDANCE
U46 ELGIN	37,998	36,767	3.3%	1,914	9,646	457	3,103
101 BATAVIA	5,776	5,585	3.4%	370	1,640	19	1,017
129 AURORA WEST	11,110	10,569	5.1%	567	3,043	186	3,146
131 AURORA EAST	10,888	10,472	4.0%	454	2,440	173	976
300 DUNDEE	17,157	16,723	2.6%	1,035	4,647	135	914
301 CENTRAL	2,306	2,262	1.9%	153	683	10	65
302 KANELAND	2,862	2,747	4.2%	190	815	16	86
303 ST CHARLES	11,749	11,176	5.1%	780	3,563	46	916
304 GENEVA	5,071	4,836	4.9%	321	1,382	21	810
TOTAL FY2002	104,917	101,137	3.7%	5,784	27,859	1,063	11,033
TOTAL FY2001	101,137	97,518	3.7%	5,445	26,758	970	12,859
CHANGE	3,780	3,619	4.4%	339	1,101	93	(1,826)

NON-PUBLIC SCHOOLS - SEPT, 2001

(INCLUDES RESIDENT & NON-RESIDENT)

Non-public schools are not mandated to register with this office or any state office

DIST	SCHOOL	TOTAL	PRE-K	K-5	6-8	9-12
U46	ELGIN	3,103	345	1,542	790	426
101	BATAVIA	1,017	192	202	78	545
129	AURORA WEST	3,146	251	1,438	609	848
131	AURORA EAST	976	164	563	249	0
300	CARPENTERSVILLE	914	133	473	232	76
301	CENTRAL	65	0	21	44	0
302	KANELAND	86	0	0	86	0
303	ST CHARLES	916	156	546	214	0
304	GENEVA	810	244	472	94	0
TOTAL ALL DISTRICTS		11,033	1,485	5,257	2,396	1,895

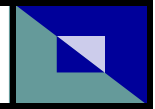
FY02 ATTENDANCE REPORT

	BEGINNING ENROLLMENT	ENDING ENROLLMENT	CHANGE	ANNUAL A.D.A.	FY2002 ATTENDANCE	FY2001 ATTENDANCE	CHANGE
U46 ELGIN	37,998	37,252	(746)	34,581.5	94.63%	94.41%	0.22%
101 BATAVIA	5,776	5,746	(30)	5,330.1	95.15%	94.71%	0.44%
129 AURORA WEST	11,110	10,952	(158)	9,739.2	92.27%	93.71%	-1.44%
131 AURORA EAST	10,888	10,624	(264)	9,619.4	93.63%	92.76%	0.87%
300 DUNDEE	17,157	17,166	9	15,375.9	94.76%	94.51%	0.25%
301 CENTRAL	2,306	2,300	(6)	2,137.6	96.06%	95.85%	0.21%
302 KANELAND	2,862	2,869	7	2,541.1	95.02%	95.52%	-0.50%
303 ST CHARLES	11,749	11,658	(91)	10,435.3	95.06%	94.15%	0.91%
304 GENEVA	5,071	5,111	40	4,643.7	95.50%	95.17%	0.33%
TOTAL FY2002	104,917	103,678	(1,239)	94,404	94.52%	94.26%	0.26%
TOTAL FY2001	101,137	99,350	(1,787)	89,608	94.26%	94.03%	0.23%
TOTAL FY2000	94,136	92,707	(1,429)	85,120	94.03%	94.68%	-0.65%

DISTRICT TRANSPORTATION ANALYSIS

7/1/2001 - 6/30/2002

	PUPILS BUSSED	BUS MILES TRAVELED	MILES/ PUPIL	REGULAR TRANSP	SPEC ED & OTHER	COST OF TRANSP.	COST/ MILE	COST/ PUPIL
FY01 STATE TOTAL	1,092,980	189,655,820	173.5	\$323,607,390	\$228,607,467	\$552,214,857	\$2.91	\$505
46 ELGIN	26,012	3,945,233	151.7	\$7,565,816	\$6,569,239	\$14,135,055	\$3.58	\$543
101 BATAVIA	3,567	511,748	143.5	877,464	1,016,009	1,893,473	\$3.70	\$531
129 AURORA WEST	6,254	1,588,342	254.0	1,429,982	3,796,786	5,226,768	\$3.29	\$836
131 AURORA EAST	580	820,938	1,415.4	0	1,770,417	1,770,417	\$2.16	\$3,052
300 DUNDEE	14,728	2,084,211	141.5	3,949,729	3,201,797	7,151,526	\$3.43	\$486
301 CENTRAL	2,505	499,115	199.2	743,519	587,452	1,330,971	\$2.67	\$531
302 KANELAND	2,671	667,114	249.8	1,083,292	692,559	1,775,851	\$2.66	\$665
303 ST CHARLES	10,280	1,535,818	149.4	2,169,447	2,152,079	4,321,526	\$2.81	\$420
304 GENEVA	4,669	495,501	106.1	1,121,174	784,962	1,906,136	\$3.85	\$408
TOTAL 2001-2002	71,266	12,148,020	170.5	\$18,940,423	\$20,571,300	\$39,511,723	\$3.25	\$554
TOTAL 2000-2001	66,858	10,192,741	152.5	\$19,627,090	\$17,526,070	\$37,153,160	\$3.65	\$556
CHANGE	4,408	1,955,279	18.0	(\$686,667)	\$3,045,230	\$2,358,563	(\$0.39)	(\$1)
PCT CHANGE	6.6%	19.2%	11.8%	-3.5%	17.4%	6.3%	-10.8%	-0.2%



FEDERAL & STATE SUPPORT REVENUE

FISCAL YEAR ENDING JUNE 30, 2002

	STATE AID	STATE - OTHER	FEDERAL	TOTAL	\$ PER ADA
U46 ELGIN	62,768,363	28,515,080	12,004,227	103,287,670	2,987
101 BATAVIA	6,912,409	2,459,563	291,435	9,663,407	1,813
129 AURORA WEST	14,733,386	8,369,224	3,917,367	27,019,977	2,774
131 AURORA EAST	32,555,680	9,780,206	7,787,540	50,123,426	5,211
300 CARPENTERSVILLE	20,198,091	11,180,852	4,844,173	36,223,117	2,356
301 BURLINGTON	1,459,288	1,979,433	82,106	3,520,828	1,647
302 KANELAND	2,307,654	1,957,208	140,617	4,405,479	1,734
303 ST CHARLES	3,359,465	5,739,257	622,994	9,721,716	932
304 GENEVA	2,317,675	2,497,316	326,625	5,141,616	1,107
TOTAL FY2002	146,612,012	72,478,140	30,017,084	249,107,236	2,639
TOTAL FY2001	129,300,079	75,590,556	22,500,658	227,391,293	2,538
CHANGE	13.4%	-4.1%	33.4%	9.6%	\$100.74

FEDERAL & STATE FLOW-THRU REVENUE

FISCAL YEAR ENDING JUNE 30, 2002

	NON-PUBLIC SCHOOLS	ELGIN C C	NO KANE VOC SYS	VALEES	KANE CO R O E	FY02 TOTAL	
SCHOOL LUNCH - FEDERAL	74,019					\$74,019	2.3%
SCHOOL LUNCH - STATE	6,095					\$6,095	0.2%
VOC ED - FEDERAL		3,521		474,927		\$478,448	14.6%
VOC ED - STATE			13,500	751,777	0	\$765,277	23.3%
ADULT ED - FEDERAL						\$0	0.0%
ADULT ED - STATE						\$0	0.0%
ADMINISTRATOR'S ACADEMY					21,717	\$21,717	0.7%
SCIENTIFIC LITERACY					71,000	\$71,000	2.2%
DROPOUTS & TRUANCY					275,320	\$275,320	8.4%
TITLE I					0	\$0	0.0%
TITLE II					6,000	\$6,000	0.2%
CAREER AWARENESS					20,195	\$20,195	0.6%
SAFE SCHOOLS					614,990	\$614,990	18.7%
INTERNAL REVIEW					70,125	\$70,125	2.1%
ROE/ISC OPERATIONS					321,542	\$321,542	9.8%
TOBACCO PREVENTION					331,932	\$331,932	10.1%
TECHNOLOGY					6,250	\$6,250	0.2%
STATE AID					209,669	\$209,669	6.4%
OTHER					13,440	\$13,440	0.4%
TOTAL	80,113	3,521	13,500	1,226,704	1,962,180	\$3,286,018	

REVENUE AND EXPENDITURE ANALYSIS**SOURCE OF FUNDS - 7/1/00 - 6/30/01**

	STATE AID	OTHER STATE	LOCAL	FEDERAL	TOTAL
U46 ELGIN	57,924,275	30,221,364	178,566,780	11,009,625	277,722,044
101 BATAVIA	6,417,967	5,381,573	32,784,222	697,544	45,281,306
129 WEST AURORA	12,512,998	8,730,291	45,091,159	3,444,331	69,778,779
131 EAST AURORA	25,781,642	14,944,974	27,460,309	7,164,639	75,351,564
300 CARPENTERSVILLE	18,914,254	11,449,800	77,233,732	4,569,074	112,166,860
301 BURLINGTON	1,332,120	2,216,194	14,475,616	422,831	18,446,761
302 KANELAND	2,026,739	2,226,451	18,278,973	456,664	22,988,827
303 ST CHARLES	3,359,465	13,697,716	71,728,330	1,499,487	90,284,998
304 GENEVA	1,530,721	4,339,245	33,895,224	896,881	40,662,070
REGION	\$129,800,181	\$93,207,607	\$499,514,345	\$30,161,076	\$752,683,209

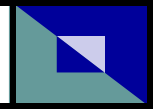
SOURCE OF FUNDS PER ADA - 7/1/00 - 6/30/01

	STATE AID	OTHER STATE	LOCAL	FEDERAL	TOTAL	FY2001 ADA
U46 ELGIN	1,745	911	5,380	332	8,368	33,189
101 BATAVIA	1,276	1,070	6,516	139	9,000	5,031
129 WEST AURORA	1,370	956	4,937	377	7,640	9,134
131 EAST AURORA	2,795	1,620	2,977	777	8,170	9,223
300 CARPENTERSVILLE	1,284	777	5,244	310	7,615	14,729
301 BURLINGTON	675	1,123	7,338	214	9,351	1,973
302 KANELAND	822	903	7,414	185	9,324	2,466
303 ST CHARLES	354	1,443	7,558	158	9,513	9,491
304 GENEVA	350	992	7,752	205	9,299	4,373
REGION	\$1,449	\$1,040	\$5,574	\$337	\$8,400	89,608

EXPENDITURES - 7/1/00 - 6/30/01

	INSTRUC-TION	GEN ADMIN	SUPPORT	OTHER	TOTAL	ANNUAL* SURPLUS/ DEFICIT
U46 ELGIN	164,516,403	3,892,314	95,087,457	56,523,067	320,019,241	(42,297,197)
101 BATAVIA	21,540,130	930,505	9,993,504	24,191,545	56,655,684	(11,374,378)
129 WEST AURORA	35,354,886	4,508,325	21,336,278	14,221,714	75,421,203	(5,642,424)
131 EAST AURORA	34,747,550	6,649,551	22,889,190	28,827,126	93,113,417	(17,761,853)
300 CARPENTERSVILLE	62,945,593	1,364,065	40,930,542	9,297,815	114,538,015	(2,371,155)
301 BURLINGTON	8,781,310	797,632	6,547,755	7,572,571	23,699,268	(5,252,507)
302 KANELAND	10,624,790	247,546	7,213,805	6,916,307	25,002,448	(2,013,621)
303 ST CHARLES	40,686,188	1,397,574	33,026,524	39,783,801	114,894,087	(24,609,089)
304 GENEVA	19,622,121	437,680	13,495,427	23,445,252	57,000,480	(16,338,410)
REGION	\$398,818,971	\$20,225,192	\$250,520,482	\$210,779,198	\$880,343,843	(\$127,660,634)

*"Annual Surplus/Deficit" does not reflect construction/life safety revenues from the sale of bonds in prior years.



**EXPENDITURES PER ADA
07/01/00—06/30/01**

	INSTRUC- TION	GEN ADMIN	SUPPORT	OTHERS	TOTAL	SURPLUS/ DEFICIT
U46 ELGIN	4,957	117	2,865	1,703	9,642	(1,274)
101 BATAVIA	4,281	185	1,986	4,809	11,261	(2,261)
129 WEST AURORA	3,871	494	2,336	1,557	8,257	(618)
131 EAST AURORA	3,767	721	2,482	3,126	10,096	(1,926)
300 CARPENTERSVILLE	4,274	93	2,779	631	7,776	(161)
301 BURLINGTON	4,452	404	3,319	3,839	12,014	(2,663)
302 KANELAND	4,309	100	2,926	2,805	10,141	(817)
303 ST CHARLES	4,287	147	3,480	4,192	12,106	(2,593)
304 GENEVA	4,488	100	3,086	5,362	13,036	(3,737)
REGION	\$4,451	\$226	\$2,796	\$2,352	\$9,824	(\$1,425)

**OPERATING EXPENDITURES PER ADA
07/01/00—06/30/01**

	OPERATING EXP - K-12	OPER EXP PER PUPIL	OPER EXP STATE RANK	TUITION CHARGE	TUITION STATE RANK
U46 ELGIN	269,139,603	8,109	39	6,951	30
101 BATAVIA	34,839,970	6,925	156	6,366	69
129 WEST AURORA	61,418,450	6,724	193	5,669	157
131 EAST AURORA	60,009,650	6,507	237	4,826	337
300 CARPENTERSVILLE	102,204,154	6,939	153	5,840	128
301 BURLINGTON	16,591,579	8,411	25	7,246	22
302 KANELAND	19,130,903	7,759	56	6,864	36
303 ST CHARLES	76,864,828	8,099	40	7,593	15
304 GENEVA	33,503,235	7,662	64	7,039	26
REGION	\$602,337,934	\$7,518		\$6,462	
STATE		\$7,926		\$6,466	

Kane County Regional Office of Education**210 South Sixth Street****Geneva, Illinois 60134****Main Office: (630) 232-5955****Main Office Fax: (630) 208-5115****Professional Development Office Fax: (630) 208-5100****Finance Office Fax: (630) 406-7166****Administration:****Clem Mejia, Regional Superintendent** 232-5963**Julie Vallejo, Associate Regional Superintendent** 232-5963

Eleanor Balderas-AuCoin, Administrative Assistant 232-5963

Alternative Programs:

Pat Dal Santo, Director of Alternative Programs 232-5958

Sandra Kakacek, Family Counselor 232-5958

Positive Behavior Interventions and Support:

Trevor Steinbach 232-5958

Life Safety:

Nestor Garcia, Assistant Regional Superintendent—Facilities & Services 232-5958

Al Burnell 232-5958

Finance:

Paul Anderson, Director of Finance 232-5961

Autumn Kelly, Finance Assistant 232-5961

GED / Transportation:

David De La Fuente, Manager 232-5957

Sandy Munoz, Managerial Assistant 232-5957

Professional Development:

Doug Johnson, Assistant Regional Superintendent—Professional Programs 406-7162

Harrison Schneider, Manager of Programs 406-7162

Lorraine Leslie, Managerial Assistant 406-7162

Teacher Certification:

Sharon Balderas 232-5962

Shirley Olsen 232-5962

Laura Stark 232-5962

Technology:

Phil Morris, Manager 406-7162

Larry Hopkins, Network Analyst 406-7162

Gary Sears, Network Specialist 406-7162

Angie Eskew-Knorr, Managerial Assistant 406-7162

