

KANE COUNTY REGIONAL OFFICE OF EDUCATION



Dr. Clem Mejia, Regional Superintendent
Julie Vallejo, Associate Superintendent

2004-2005 ANNUAL REPORT



TABLE OF CONTENTS

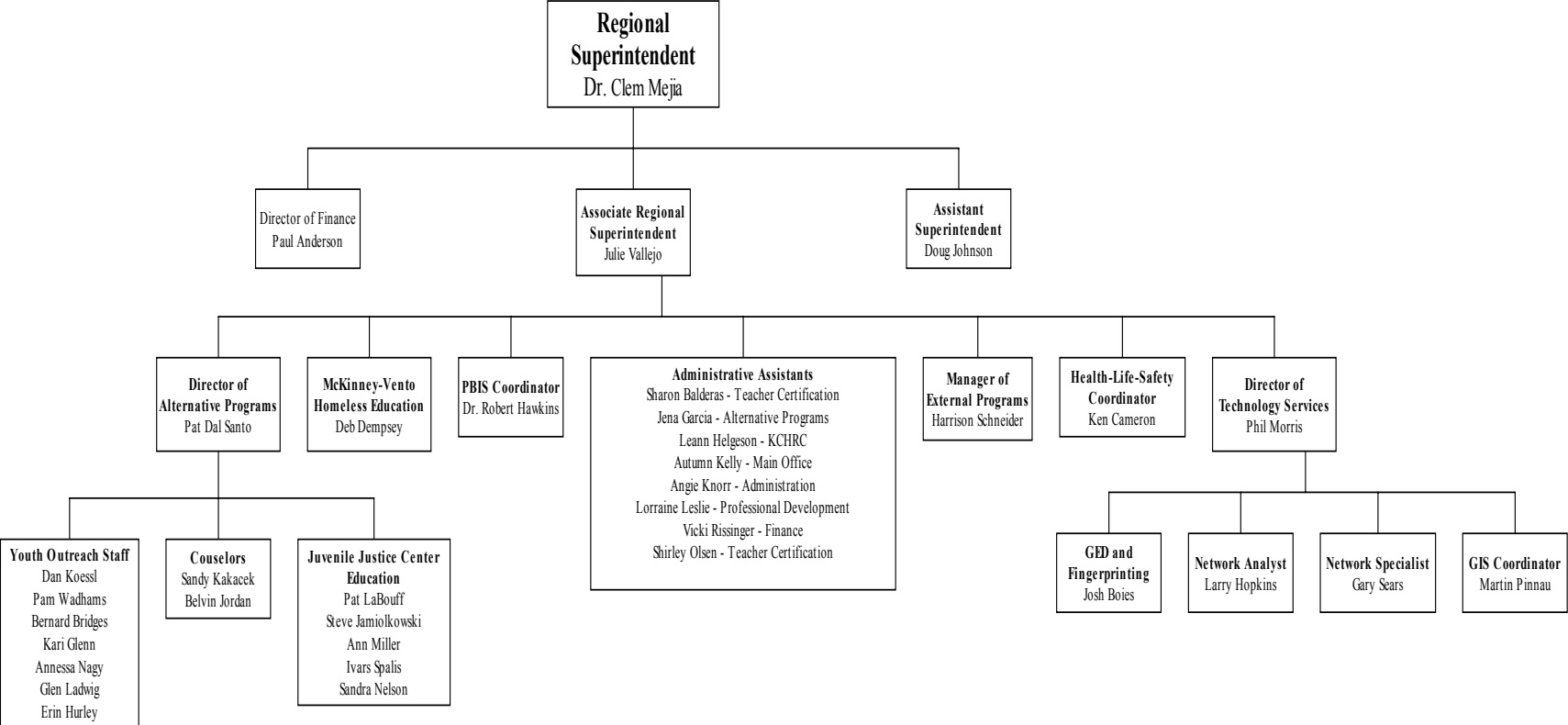
Organization Chart.....	3
Legal Reference for Annual Report.....	4
Representative Activities and Duties of the Regional Staff.....	4
Budget -County Portion Only.....	4
Institute Fund Report.....	5
Kane County Educator of the Year Awards	6
Kane County Visual Media Coop.....	6
School Safety and Security.....	6
Juvenile Justice Center.....	6
General Educational Development (G.E.D.)	7
Home-Schooling	7
Dropout Intervention Project	7
Positive Behavior Interventions and Support	7
Masters/Doctorate & Counselor’s Cohort.....	7
Kane County Youth Outreach Program	8
Regional Safe Schools Program.....	9
System of Support.....	9
Project REACH (Restoring Educational Access to Children who are Homeless) - Area One.....	9
Reading First.....	9
Gifted Education.....	10
Standards-Aligned Classroom Project (SAC).....	10
Illinois Administrators’ Academy	10
Kane County Human Resources Consortium (KCHRC)	11
Career Awareness and Development & ETC.....	11
Career Cruising.....	11
Sixteenth Circuit Court Gang Task Force	11
Middle School Endorsement Program.....	11
Professional Development	12
<i>Learning Standards, ISAT, PSAE, Assessment</i>	<i>12</i>
<i>Fundamental learning Areas and Special Interest.....</i>	<i>12</i>
<i>School Safety & Security: Strategies and Resources</i>	<i>12</i>
<i>Inspiration.....</i>	<i>12</i>
<i>Health Education: Ideas that Work.....</i>	<i>12</i>

<i>Drumming Circles</i>	12
<i>Educational Strategies and Initiatives</i>	12
<i>Educational Strategies and Initiatives (Con't)</i>	13
<i>Reading and Writing</i>	13
<i>Special Education and School Support Services</i>	13
<i>Data Analysis and the Reading Coach Training</i>	13
Technical Assistance to Schools	13
Kane County Government Computer Courses	13
Enhancing Education Through Technology Grant	14
Learning Technology Services	14
Area One West Learning Technology Center	14
Networks	15
District Transportation Analysis	15
Assessed Valuation Per ADA – School Property – Bonded Indebtedness	16
Classroom Buildings in Use – 7/01/04 – 6/30/05	16
FY 2005 Life Safety	17
FY 2005 Construction and Occupancy Permits	17
Certified Personnel – 7/01/04 TO 6/30/05	18
FY05 ENROLLMENT	19
ENROLLMENT - NON-PUBLIC SCHOOLS - SEPT, 2004	19
ISBE Federal and State Revenue	20
Federal & State Flow-Thru Revenue	20
Revenue and Expenditure Analysis	21
<i>REVENUE AND EXPENDITURE ANALYSIS</i>	<i>21</i>
<i>SOURCE OF FUNDS PER ADA - 7/1/03 - 6/30/04</i>	<i>21</i>
<i>EXPENDITURES - 7/1/03 - 6/30/04</i>	<i>21</i>
<i>EXPENDITURES PER ADA - 7/1/03 - 6/30/04</i>	<i>22</i>
<i>OPERATING EXPENDITURES PER ADA - 7/1/03 - 6/30/04</i>	<i>22</i>
Kane County Regional Board of Trustees	22

Kane County Regional Office of Education Organization Chart

Our Mission is to provide leadership in the learning community by:

- *Developing Educational Resources*
- *Facilitating Learning*
- *Collaborating with all Educational Partners*



Legal Reference for Annual Report

This Annual Report is designed in part to meet the provisions of Chapter 105, Article 3, Section 5/3-6 and Section 5/3-15.8 of the School Code of Illinois. The report of schools visited and meetings attended as required by Section 5/3-5 is provided quarterly to the Public Service Committee of the Kane County Board. In addition, as established in Chapter 105, Article 2, Section 5/2-3.62 in the School Code of Illinois, the Regional Office of Education shall provide services to support administrators and teachers in the planning, implementation, and evaluation of education for gifted children, computer technology education, mathematics, science, and reading. The Regional Office of Education may provide training, technical assistance; coordination and planning in other program areas such as school improvement, career guidance, alcohol/drug education and prevention, and alternative education.

Representative Activities and Duties of the Regional Staff

Processed approximately 1,951 new applications for teaching certificates and registered over 4,083 certificates.

Visited each of the 158 public school buildings in the Region to monitor life/safety requirements.

Appointed instructors for school bus driver classes, held 14 initial bus training classes for 159 new drivers and 48 bus refresher classes for 814 drivers. Distributed information on bus safety by meeting with School District Transportation Directors.

Assisted the State Board of Education during its recognition visits of Kane County School Districts. Provided school officials and the general public with information regarding area school districts and the School Code of Illinois.

Reviewed and approved, or returned for correction, a multitude of State Board of Education reports and applications filed by local school districts.

Regional Superintendent Mejia served on the following committees: Kane County Child Advocacy Board; Kane County Workforce Development Board; Illinois Association of Regional School Superintendents; Past President for Illinois Association of County Officials; Association for Individual Development Board.

Associate Superintendent Vallejo served on the following committees: Council for Exceptional Children; Illinois Association of Regional School Superintendents; Northern Illinois Superintendents' Roundtable; Kane County Safe Schools Committee; Northern Illinois Chapter of Phi Delta Kappa; State Scholarship Committee and the Adjunct Faculty at Aurora University.

Budget-----County Portion Only

Funds for the operation of the Kane County Regional Office of Education are provided by Kane County. This does not include salaries for the Regional Superintendent and the Associate Regional Superintendent, both of whom are paid by the State of Illinois. Nor does it include wages and operating expenses of the Visual Media Co-op, which is funded by membership fees or for the Professional Development Services Division which is funded by the Illinois State Board of Education. The following budget and expenditure figures are based on the County's fiscal year, which runs from December 1st through November 30th.

KANE COUNTY BUDGET

	<u>FY-03</u>			<u>FY-04</u>			<u>FY-05</u>
	Budget	Actual	Pct	Budget	Actual	Pct	Budget
Salaries	211,093	222,769	105.5%	226,419	251,519	111.1%	230,948
Operations & Other	19,485	9,180	47.1%	19,485	16,041	82.3%	19,485
DISCRETIONARY TOTAL	230,578	231,949	100.6%	245,904	267,559	108.8%	250,433
Health & Dental	58,167	68,535	117.8%	75,444	55,628	73.7%	68,775
TOTAL	288,745	300,484	104.1%	321,348	323,187	100.6%	319,208

Institute Fund Report

The majority of expenditures from the Institute Fund were used to assist local school districts in providing professional development programs to their staff by paying all or part of the costs associated with the Kane County-Wide February 18, 2005 Institute Day and their in-service programs. A total of \$50,147.08 was expended from July 1, 2004 to June 30, 2005 for teacher training programs and workshops. Some of the programs included are Administrators Summer Workshop, the Library Selection Workshop and Kane County Educator of the Year. The Advisory Board Members are Dr. Cindy Miller, Chuck Gilmore, Linda Voris, Jan Thietje, John Duffy, Deborah Schmalholz and Guila G. Zeigler.

INSTITUTE FUND FINANCIAL REPORT JULY 1, 2004 THROUGH JUNE 30, 2005

BEGINNING FUND BALANCE, JULY 1, 2004 **413,449.29**

RECEIPTS

1-YEAR REGISTRATIONS	7,390.00
MULTI-YEAR REGISTRATIONS	65,130.00
REGISTRATION RENEWALS-PAST YEAR	964.00
DUPLICATE CERTIFICATES	1,036.00
TEACHER CERT APPLICATION	59,586.00
DUE TO ISBE - TEACHER CERT APPL	(53,405.10)
INTEREST	1,478.21
EDUCATOR OF THE YEAR	20,250.00
REFUNDS & ADJUSTMENTS	(322.00)

TOTAL RECEIPTS **102,107.11**

DISBURSEMENTS

INSTITUTE DAY	1,439.61
OTHER PURCHASED SERVICES	175.00
TRAVEL	570.41
DUES & FEES	4.00
EDUCATOR OF THE YEAR	47,208.06
SPELLING BEE	750.00

TOTAL DISBURSEMENTS **50,147.08**

ENDING FUND BALANCE, JUNE 30, 2005 **465,409.32**

Kane County Educator of the Year Awards

The 30th Annual Educator of the Year Awards Dinner was held at Pheasant Run Resort in St. Charles on May 6, 2005. The dinner honored 45 distinguished educators with plaques of recognition. Those who received awards of distinction were:

Award Given	Name	District
Educator of the Year	John Walker	District 101
Regional Superintendent Award	James W. Vaughan	District 131
R. B. Mades Associate Educator of the Year	Gail Hamilton	District 300
Elementary Educator of the Year	Linda Braddy	District 301
Elementary Educator of the Year	Karen Lewis	District 300
J.L. Hanson Middle School Educator of the Year	Linda Hansen Dee	District 129
D.L. Hoeft High School Educator of the Year	Lisa Marie Dandre	District 303
Administrator of the Year	Dr. Thomas A. Watrobka	District 304
Support Staff Award	Cookie Olson	District 304

Kane County Visual Media Coop

The Kane County Visual Media Cooperative was established in 1938 to serve the teachers and staff in our region by providing educational 16mm films, videotapes and laserdiscs for their classroom use. The cooperative contains over 2,000 educational titles.

The cooperative is open to all public and non-public institutions in Kane County. The Regional Office of Education serves as the administrative agent for the cooperative. Funding for the cooperative is obtained by fees paid by districts and institutions.

For the 2004-2005 school term, the cost of renting a film, videotape or laserdisc was \$2.96 per week. This past year, the cooperative received over 1,200 requests.

For questions concerning this program, contact Phil Morris (pmorris@kane.k12.il.us)

School Safety and Security

In the past several years school security and student safety have become major concerns across the nation as well as in Illinois. Kane County ROE has sponsored numerous related programs that have involved all nine school districts within its jurisdiction. Collaborative program planning continues in this important area.

- Crisis Management
- Proactive School Security Planning
- School Searches and Seizures & Safety Legal Workshops
- PBIS (Positive Behavioral Interventions and Supports)
- Verbal Judo
- How To Cope With A Bully (Gum In My Hair)

Participants: More than 325

Juvenile Justice Center

The educational program at the Juvenile Justice Center is administered by the Kane County Regional Office of Education. An intergovernmental agreement between the Regional Office of Education, St. Charles School District, and the Chief Judge assures that the Regional Office of Education is responsible for the educational program for the students at the Juvenile Justice Center. The teachers provide daily instruction to meet the educational needs of the students in a continuous learning calendar. During this year, 762 students received educational services from the Juvenile Justice Center teachers.

General Educational Development (G.E.D.)

The Regional Superintendent is delegated with the responsibility of administering The G.E.D. testing program in accordance with the Illinois School Code. This program allows those who are 18 years of age, whose high school class has graduated and have been out of the school system for one year to secure a High School Equivalency Certificate upon completion and passing all tests.

Testing centers have been established in Kane County at Waubensee Community College in Sugar Grove and at the Regional Office of Education in Geneva. The tests require two days and are administered on consecutive Saturdays. The Kane County Regional Office of Education has become an official scoring center and has installed equipment for scanning and scoring all tests except the essay portion.

A \$35.00 fee is charged to cover the cost of tests, administration of tests, grading, and for the certificate.

	7/01/04--6/30/05
GED Registrations	981
Retests	195
Tests Passed	629
Transcripts Processed	589

Home-Schooling

The Regional Office of Education serves as a resource to those parents who are interested in home-schooling their children. Information is shared with the parents to assist them. A request is made for parents to register with the regional office as a home-schooling parent and assure that education is being provided to their children. There are no fees collected for resource information.

Dropout Intervention Project

The 2004-2005 school year marked the 17th year of this project. The goal of the Dropout Intervention Project is to bring “disconnected” youth from 16-21 years of age back into the mainstream of society. As of June 2005, the Project enrolled 61 students in the GED Program. Three hundred thirty-three students were provided dropout interventions.

Positive Behavior Interventions and Support

The 2004-2005 school year marked the 4th year of the project. This program serves both Kane and Lake Counties from the Kane County ROE. PBIS leads school teams in elementary, middle and senior high schools through a three year process that increases the positive behavior of all students and improves school climate in support of effective teaching and learning. As of June 30, 2005, forty-five schools in Kane and Lake Counties serving over 35,000 students are currently involved. Thirty-one administrators have attended the PBIS Administrator Academies in Kane County.

Masters/Doctorate & Counselor’s Cohort

Aurora University and the Regional Office of Education have collaborated to develop and provide a Masters Degree program for the teachers in Kane County. The teachers may receive their degree through a program of Masters in Teaching or Masters in Educational Leadership. Approximately 1,500 teachers have participated in this program.

Aurora University and the Regional Office of Education have collaborated to develop and provide a Doctorate Degree Program. The individuals may receive their degree through a program of Doctorate in Educational Administration or Doctorate in Curriculum.

Kane County Youth Outreach Program

In 2004 – 2005 we completed the 20th year of the Kane County Truancy Prevention Program and continued the 17th year of the Kane County Dropout Intervention Project.

Kane County had 1,303 “official” referrals from our local schools requesting truancy assistance from our staff. The services provided during the 2004 – 2005 school year were the following:

<u>SERVICES</u>	<u>2004-2005</u>	<u>2003-2004</u>
School Visits	3,705	3,810
Home Visits	1,246	1,250
Student Contacts	3,518	3,875
Community Agency Contacts	824	930
School Conferences	460	416
Regional Conferences	41	29
Classroom Prevention Presentations	29	7*
Retrieved Dropouts to GED Program	61	84
Juvenile Court Cases	35	37
Adult Court Cases	13	45

*(1,280 served)

Funding: \$339,663

<u>SOURCE OF REFERRALS</u>	<u>2004-2005</u>	<u>2003-2004</u>
<u>By District</u>		
U46 Elgin	359	289
101 Batavia	14	17
129 West Aurora	299	295
131 East Aurora	352	347
300 Dundee/Carpentersville	232	95
301 Central	0	5
302 Kaneland	2	1
303 St. Charles	42	24
304 Geneva	7	7
Other	2	5
<u>By Grade Level</u>		
Elementary K-5	350	708
Middle School	368	314
High School	285	163
Other	0	0
<u>By Gender</u>		
Males	644	606
Females	659	579
TOTAL	1,303	1,185

Regional Safe Schools Program

The Regional Safe Schools Program (RSSP) began with a planning and implementation grant in school year 1996-1997. This program is a result of legislation providing programs for disruptive students who are eligible for suspension or expulsion. The legislature appropriated \$15 million for safe school programs. Regional Offices of Education wrote program grants to access this money. These funds are renewable on an annual basis and are used by Kane County to provide educational programs to disruptive students in a variety of ways. During the 2004 - 2005 school year, Districts U-46, Mid-Valley (Districts 101, 301, 302, 303, 304), and District 300 operated alternative to expulsion programs. All the above programs are under the auspices of the Kane County Regional Office of Education.

In 2004 – 2005 approximately 133 students were served in the above programs. They were served at 5 different sites. All of these students were eligible for expulsion or had multiple suspensions. Instead they attended RSSP sites in their local districts. Eighty percent of these students completed the program successfully. Due to the RSSP, expulsions have been reduced by 63% in Kane County since the 1994-1995 school year.

System of Support

The Kane County Regional Office of Education's role in the system of support is to create a powerful and effective partnership between the System of Support schools and Regional System of Support Provider (RESPRO Area 1-C) to improve teaching and learning, student learning, and the learning community. Support and assistance are provided through direct training, on site support and technology integration for eligible individual schools and public school districts aligning with the goals articulated in the state's System of Support and No Child Left Behind guidelines.

Funding: \$675,123

Project REACH (Restoring Educational Access to Children who are Homeless)—Area One

Project REACH focuses on schools and communities in Area One (Lake, McHenry, suburban Cook, DuPage, Kane, Kendall, Will and Grundy counties) in order to eliminate barriers to education for homeless students.

Project REACH experienced a challenging workload as the school year unfolded.

- Extensive outreach to agencies and locations frequented by homeless families resulted in over 150 calls to Project REACH for assistance with enrollment issues throughout Area One. As a result of this intervention, 257 homeless students, including 27 unaccompanied homeless youth, gained access to education. Additionally, 30 non-educational cases requiring intensive referral services were successfully handled.
- Besides interventions on behalf of homeless families, Project REACH staff conducted 66 meetings and/or trainings for over 2,000 persons, presenting information about recent changes of federal and state laws governing access to school for homeless students. Extremely favorable reviews and referrals for additional presentations confirmed the belief that school personnel and agency staff welcomed the information.

Local liaisons from the 305 school districts and personnel involved with homeless students are supported by Project REACH with clarification about legal requirements, assistance on enrollment issues, and guidance on how to better serve this growing population.

Sponsored by the Kane County ROE, Project REACH is fully funded by the Illinois State Board of Education through the McKinney-Vento Homeless Education Assistance Act of 2001.

Funding: \$255,355

Reading First

The Federal No Child Left Behind's Reading First program, authorized under Title I, Part B, Subpart 1 of the Elementary and Secondary Education Act (ESEA), is a national initiative to improve reading in kindergarten through grade three by implementing a classroom reading program based on phonemic awareness, phonics, vocabulary development, reading fluency and reading comprehension strategies. The Kane County Regional Office of Education works cooperatively with other regional and state agencies to provide technical assistance services, including professional development, to facilitate implementation of the Reading First program.

The Kane County ROE works closely with Reading First schools and districts to provide the comprehensive Reading First Academy trainings for all kindergarten through third grade teachers and special education teachers. Training and technical support for improvement of reading instruction and raising student achievement in these schools includes planning, assessment, evaluation, and ongoing professional development for instructional staff, building leadership, and coaches.

Funding: \$159,419

Gifted Education

The Regional Office of Education provides support and training to enhance our districts' ability to meet the special needs of students in each respective district.

ROE State Raising Student Achievement Conference *
 Illinois Association for Gifted Children State Conference *
 Kane County Gifted Services Network
 High School Gifted Pilot Project
 Level I & II Gifted Institute Training
 Introduction to Gifted Education

Participants: 138 Funding: \$6320

* Attendance at the two state conferences exceeded 940 participants.

Standards-Aligned Classroom Project (SAC)

The Standards-Aligned Classroom project was created to help classroom teachers align their classroom level instruction and assessment to the Illinois Learning Standards. This professional development program utilizes the learning team approach to help teachers become more "assessment literate" following the work of Rick Stiggins and the Assessment Training Institute.

In the fall, each Level I team comprised of the building principal, several teachers, and a facilitator/coach, attended a two-day training. During the school year each team attends a team meeting approximately every two weeks to reflect on and share professional readings and implementing standards into the classroom experiences using the Stiggins approach to assessment and instruction.

Also each fall, previous Level I teams attend a one-day training to create action plans to further support the classroom integration of the learning standards into curriculum, instruction and assessment. Level II and school-wide teams also meet on a regular basis with a coach to reflect and share their implementation experiences.

Funding: \$10,319

Illinois Administrators' Academy

Individuals employed in positions requiring a Type 75 certificate as a condition of employment (Illinois School Code Section 5/24A-3) are required to complete a minimum of one Illinois administrators' academy each year.

Administrators' Academy offerings for 2004-2005:

Introduction to the Evaluation of Certified Staff (four sessions)
 Ventures For Excellence, Selection & Development of Teachers, Phases I, II, & Form C
 Ventures For Excellence, Selection & Development of Administrators, Phases I & II
 Induction/Mentoring (Induction for the 21st Century)
 Raising High School Reading Achievement
 Standards for the Principal/Administrator (two sessions)
 The Legal Basis of Student Management
 Leadership for Sustained Educational Systems Change (Gates Project, Levels I & II)
 PBIS (Positive Behavioral Interventions & Supports) (three sessions)
 Recognizing & Assisting Homeless Students in the Classroom (two sessions)
 Leadership for the Development of a Profile of Instructional Practices (two sessions)
 GIS Fundamentals For Administrators
 School Improvement Planning: Meeting Criteria for an ISBE Approved SIP
 The 17 Indisputable Laws of Teamwork
 Change - Who Moved My Cheese?
 The 21 Irrefutable Laws of Leadership
 The School Leadership Standards: A Roadmap for Leadership
 The Role of Leadership In The Change Process
 A Framework For Understanding Poverty
 Data Plus: Leadership For Student Achievement
 Local Assessments Aligned With State Standards
 The Digital Leader: Using Technology Successfully
 Continuous Improvement: Moving from Great to Greater
 Data-Driven Decision-Making
 Learning The 21 Indispensable Qualities of a Leader

Funding: Self Sustaining Participants: 792

Kane County Human Resources Consortium (KCHRC)

The KCHRC continued to develop successfully in its third year in existence. This on-line teacher application system processed almost 13,000 applications resulting in the hiring of more than 1,000 staff members.

All nine Kane County public school districts contributed funds totaling \$49,000 to support the project. The KCHRC meets twice each month, the first time to deal with KCHRC business and the second for associated professional development.

The KCHRC has received significant notoriety around the state and nation resulting in many inquiries from like entities interested in duplicating the program here in Kane County.

Funding: \$49,000 Participants: 9 of 9 school districts

Career Awareness & Development & ETC

The State funded Career Awareness & Development grant was eliminated in 2003. Several collaborative initiatives of the Kane County ROE, VALEES, Northern Kane EFE, the nine Kane County public school districts, and the Illinois School Counselors Academy related to the grant continue to develop on a self-sustaining basis.

- Illinois School Counselors' Academy regional forum
- School Counselors' Academy programs
- Workshop In Counseling: Emphasizing Student Academic Success by Integrating Career Development

Funding: \$50,000 (all partners) Participants: 319

Career Cruising

Since May of 2000, the Kane County ROE, Northern Kane EFE, VALEES, and the Illinois School Counselors' Academy have collaborated in developing programs to better integrate career and technical education with the total school educational enterprise, grades K-14. The initial effort (COMET Project) included development of an electronic career portfolio for all students.

The cooperative partners identified the commercial product known as Career Cruising to meet the needs of the electronic portfolio goal. In 2004-2005 all the Kane County middle and high schools were provided Career Cruising site licenses. Research indicates variable levels of implementation, but the variety and scope of program use assures that the project will continue.

Funding (all partners): \$14,000 Participants: 5,000 +

Sixteenth Circuit Court Gang Task Force

The Kane County ROE is a representative member of the Sixteenth Circuit Gang Task Force as well as a professional development program partner. The most recent program was entitled "Drugs-A Community Crisis" held in Geneva on May 12, 2005 for 167 participants.

Middle School Endorsement Program

Based on expressed needs of many Kane County teachers for the opportunity to obtain the middle school endorsement to their teaching certificates, the Kane County Regional Office of Education sponsored the following courses in 2004-2005:

- Functions of the Middle School
- Developmental Issues in Early Adolescent Education

Budget: self sustaining Participants: 47

Professional Development

The Regional Office of Education supports a wide variety of activities including institutes, workshops, conferences, networking, technical assistance, information dissemination, and consulting to meet the needs of our schools. These activities are designed to complement the other Kane County Regional Office of Education and district professional development programs. Our office collaborates with local, regional, and state educational partners representing both the public and private sector in creating learning opportunities for the entire Kane County Learning Community. Reading First and System of Support (RESPRO-Area 1) activities supported through No Child Left Behind (NCLB) federal funding are aligned with the goals articulated in the Illinois State Board of Education and the No Child Left Behind guidelines.

Learning Standards, ISAT, PSAE, Assessment

SAC (Standards Aligned Classroom) Level I Training
 SAC School-wide Training
 RESPRO Illinois Interactive Report Card Training
 PLATO/Reading Horizons Training
 Data Analysis and the Reading First Coach Training
 Local Assessments Aligned with State Standards
 Data Driven Decision Making
 Preparing Speech and LD Students for ISAT Testing
 Solving and Scoring Open-Ended Problems
 Writing in Mathematics/Assessment
 Data Collection and Organization
 Problem Solving
 How to Make Curriculum-Based Assessments Work for You
 English Language Proficiency Standards
 Illinois Frameworks for Learning: Reading (3-8)
 Illinois Frameworks for Learning: Math (3-8)
 ISAT Reading Training
 ISAT Writing Training
 ISAT Math Training

Fundamental learning Areas and Special Interest

Health Education: Ideas that Work
 Drumming Circles
 Folk Dance for Students
 Snow Day the Orff Way
 Native American Flute Music for the Classroom
 Solving and Scoring Open-Ended Math Problems
 Writing in Mathematics
 Math Data Collection and Organization
 Integrating Math into the Content Areas
 Elementary Math Problem Solving
 Using Algebra Manipulatives
 Using the Graphing Calculator in the Algebra Classroom
 Mental Math Activities for Assessment and Remediation
 Using Functional Relationships
 Middle School Math Problem Solving
 Career Cruising
 Math in Family and Consumer Science
 Animation and Illustration
 Help for the Struggling Student
 Junior Achievement
 Water Resource Workshop with Groundwater Model Construction
 Show Me: Creating and Using Visual Systems in the Classroom
 Taking Flight: Using Children's Literature to Learn about Birds
 Biotechnology, It's Child's Play
 Bugs, Our Buddies
 Hands-On Science at Sci Tech
 Teaching Reading in the Foreign Language Class
 Smartboard Training
 Engage, Enlighten & Inspire Students with USA Today
 Co-Op Corps, Foreign Language
 Fox River Watershed Monitoring Network Orientation Workshop
 A Day in a One-Room School
 Kane County Music Institute Day

Fundamental learning Areas and Special Interest (Con't)

Fox River Watershed Conference
 Drugs – a Community Crisis
 Career Awareness & Development
 AgTech Tour for Teachers
 Forest Preserves As Classrooms
 K-5 Mathematics Curriculum Showcase
 Grades 6-8 Science Curriculum Showcase
 High School Mathematics Curriculum Showcase
 Recognizing and Assisting Homeless Students in the Classroom
 United Streaming Training
 SkillsTutor Training
 Technology Instruction Across Content Areas
 Illinois Frameworks for Learning: Reading (3-8)
 Illinois Frameworks for Learning: Math (3-8)
 Ag Citing Genetics
 Everyday Math: Ideas that work
 Adapted Physical Education
 CPR Training
 FOSS: Ideas that Work
 Music day for High School Band, Choir, and Orchestra Directors
 Food Safety Workshop
 School Safety & Security: Strategies and Resources
 Inspiration
 Starlab Basic Training

Educational Strategies and Initiatives

Working with Children of Poverty
 A Framework for Understanding Poverty
 Learning Structures
 ELL (English Language Learners) Workshop
 ELL RESPRO Conference
 Closing the Achievement Gap
 CRISS Training
 Tools for Teaching
 Targeted Reading Conferencing
 Self Assessment of Teaching
 National Board Certification
 Continuous Improvement: Moving from Great to Greater
 Functions of the Middle School
 Developmental Issues in Early Adolescent Education
 No Child Left Behind and the School Improvement Process
 Focused Walk: Evaluating Student Engagement in Schools
 Project Connect
 Keeping Schools Safe in a Day of Homeland Security
 Introduction to Skillstutor Workshop
 No Child Left Behind Overview
 SWIS Facilitator Training
 PBIS (Positive Behavioral Intervention & Supports): An Overview
 PBIS Target Interventions – Initial
 PBIS Universal Team Training
 PBIS Classroom Strategies
 Internet and Computing Core Certification
 Carpe Diem- Seize the Day and Hook into FISH! Philosophy
 Recognizing and Assisting Homeless Students
 Effective Ways to Communicate with Parents and Students
 Meaningful Partnerships

Educational Strategies and Initiatives (Con't)

The Art of Behavior Management
 Practicing Best Practices
 Service Learning: Engaging Students in Successful Learning
 Integrating Technology into the Classroom
 School Center Webpage Training
 Knowing Your Students

Special Education and School Support Services

Learning Behavior Specialist I Training
 Challenges and Strategies Working with Special Populations Students
 Preparing Speech and LD Students for ISAT Testing
 Brain Gym (for nurses)
 Communicable and Infectious Diseases and Immunizations
 Cognitive Behavior Therapy for School-Age Children
 Building Effective Transitional Planning Partnerships
 Putting Yourself in the Shoes of an Individual with a Learning Disability
 ELL: The Basics of Bilingual Education
 Equine Assisted Psychotherapy
 Addiction in the Adolescent
 Brain Anatomy, Function, Impairments and Interventions to Improve Learning
 CPR & Automated External Defibrillator Certification
 Support and Strategies for Students who Struggle
 Recognizing and Assisting Homeless Students
 PBIS Universal Team Training
 Illinois School Counselors Academy
 Functional Curriculum Across Grade Levels/Transition Planning
 Sensory Integration & Behavior Strategies Can Work Together
 Illinois Learning Standards & Special Education

Reading and Writing

CRISS Training
 Reading First Coach Training
 PLATO/Reading Horizons Training
 Targeted Reading Conferencing
 Miriam Trehearne Reading Workshop (Kindergarten)
 Miriam Trehearne Reading Workshop (1st Grade)
 Miriam Trehearne Reading Workshop (2nd Grade)
 Data Analysis and the Reading Coach Training
 Developing Reading Excellence
 Project Connect; SkillsTutor
 Helping the Struggling Student: Facilitating Literacy and Learning
 Guided Reading for Grades 3-5
 Taking Flight: Using Children's Literature to Learn about Birds
 Balancing Reading in the Primary Classroom
 Literacy Centers and Guided Reading Management
 Phonemic Awareness: The Important Foundation to Early Literacy
 Identifying Best Practices in Reading for Administrators
 Kane County Writing Project
 Reading First Academy (3rd Grade)
 Reading First Academy (2nd Grade)
 Reading First Academy (1st Grade)
 ISEL Training
 DIBELS Training
 TPRI Training
 RF Coaches Toolbox Training
 Reading First: Phonemic Awareness Implementation Support
 Reading First: Phonics Implementation Support
 Reading First: Fluency Implementation Support
 Reading First: Vocabulary Development Implementation Support
 Reading First: Comprehension Implementation Support
 Reading First Academy (Grade K)

Participants: 6857

Funding: \$225,316

Technical Assistance to Schools

Part of the responsibility of the Kane County Regional Office of Education is to provide technical assistance to schools and educators as they work to improve curriculum, instruction, and learning. This assistance includes presentations, facilitation, consulting, coaching, and training.

Kane County Government Computer Courses

The Regional Office of Education has helped design and coordinate a Technology Training Program funded by Kane County Government for its employees. This program uses the ROE computer lab during available times to train on various topics including Microsoft Office, Introduction to the Internet, Email, WordPerfect, and Lotus.

For questions concerning this program, contact Phil Morris (pmorris@kane.k12.il.us)

The ROE also provides the lab for departments to use for specialized training throughout the year.

Enhancing Education Through Technology Grant

The primary goal of the Ed Tech program is to improve academic achievement through the use of technology in schools. Specifically, the grant addresses the integration of technology with teacher training and curriculum development to establish and use successful research-based instructional methods.

During this 3 year grant, the Regional Office of Education has been able to provide the following:

7 Wireless laptop carts containing 16 laptops and a wireless printer
 75 Licenses of SkillsTutor to Middle Schools and schools not achieving AYP (<http://www.skillstutor.com>)
 Created an Educator Portal (<http://portal.kaneroe.org>) to support web resources
 Funded Encyclopedia Britannica and EBSCO for all schools via the web
 Provided support for online Technology Needs Assessment for all schools
 Provided technology professional development in areas of need for all schools
 Have begun developing resources in Spanish for parents
 Created online web-based training modules for teachers (<http://www.newexplorations.com>)
 Begin providing access to Project Connect for parents (<http://www.projectconnect.info>)

Further questions concerning this program, please contact Phil Morris (pmorris@kane.k12.il.us)

This initiative has been funded by U.S. Dept. of Education NCLB ESEA Title V, Part D, Subpart I funds.

Learning Technology Services

The Regional Office of Education provides support and training in many areas of technology. To determine the activities to provide during the year, a needs assessment is given during the year to teachers and monthly technology coordinator meetings occur. Monthly Technology Coordinator meetings are used to communicate information from the Illinois State Board of Education, and also allow dialogue between districts.

Learning Technology Services also provides technical support within the Regional Office of Education to maintain connectivity to the Illinois State Board of Education electronic systems including Teacher Certification and Administrators' Academy. It also continues to support the Safe Schools programs within Kane County school districts and support the technology implementation at the Kane County Juvenile Justice Center (JJC).

For questions concerning this program, contact Phil Morris (pmorris@kane.k12.il.us)

During this past year the following services have been provided for school districts:

Hosting of 7 district and private school websites	Hosting of over 5,000 teacher email accounts
Online Registration for workshops with digital encryption	Digital Imaging of 180,000 records
Professional Development Library accessible from ROE website	Consultation for KCHRC On-Line Application
Installed and maintain LiveScan Fingerprint equipment for	Hosted Specialized training for school districts (i.e. SASI, Tech
Fingerprinting of new teachers and bus drivers in Kane County	Assessment, etc.)

Area One West Learning Technology Center

The Illinois State Board of Education established the Learning Technology Center program for the purpose of providing a coordinated, statewide support and infrastructure which assists school districts in planning for, implementing, assessing results and educating school staff in the use of technology and telecommunications in curricular, instructional and administrative functions. More information on the Learning Technology Center program can be found at <http://www.isbe.net/curriculum/elearning/default.htm>

Through this purpose, the Kane County Learning Technology Center has provided the following services using funding provided through the contract from ISBE.

- Attending Statewide Meetings
- Facilitated or Assisted schools with Technology Planning
- Hosted several Peer Review Sessions for Technology Plan Approval
- Provided funding for Conference Attendance for Technology Coordinators and Teachers
- Assisted Districts with funding and training for Reading / Math Initiatives using Technology
- Provide technical support for connection to the Illinois Century Network (ICN) (<http://www.illinois.net>)
 - o Provide network consultation for the design and implementation of Local Area Networks (LANs) and Wide Area Networks (WANs)
 - o Help schools with the monitoring, management, and troubleshooting of their WANs
 - o Work with ICN Staff to assist in troubleshooting
- Assist schools with E-Rate applications to the Federal government (<http://www.sl.universalservice.org>)

For questions concerning this program, contact Phil Morris (pmorris@kane.k12.il.us)

Networks

This system of educator networks is provided to showcase best practices in respective content areas, develop leadership for instructional improvement, solve instructional and assessment concerns, and promote the professional development of teachers in their content areas. Each network meets multiple times each year, depending on the professional needs of the participants and the goals of the respective network.

- Kane County Gifted Services Network
- Special Education Directors Network
- Learning Leaders Network
- Reading Leaders Network
- Technology Leaders Network

Participants: 234

Funding: \$2400

District Transportation Analysis

7/1/2004 - 6/30/2005

	<i>DISTRICT</i>	<i>PUPILS BUSSED</i>	<i>BUS MILES TRAVELED</i>	<i>MILES/ PUPIL</i>	<i>REGULAR TRANSP</i>	<i>SPEC ED & OTHER</i>	<i>COST OF TRANSP.</i>	<i>COST/ MILE</i>	<i>COST/ PUPIL</i>
U46	ELGIN	24,351	3,744,815	153.8	\$9,108,821	\$10,456,272	19,565,093	\$5.22	\$803
101	BATAVIA	3,721	638,513	171.6	933,821	1,385,149	2,318,970	\$3.63	\$623
129	AURORA WEST	6,598	1,392,772	211.1	2,078,710	3,890,637	5,969,347	\$4.29	\$905
131	AURORA EAST	606	663,670	1,095.2	0	2,244,497	2,244,497	\$3.38	\$3,704
300	DUNDEE	16,000	2,489,253	155.6	4,808,995	3,189,590	7,998,585	\$3.21	\$500
301	CENTRAL	2,662	580,315	218.0	915,307	734,875	1,650,182	\$2.84	\$620
302	KANELAND	3,232	560,414	173.4	1,588,616	769,515	2,358,131	\$4.21	\$730
303	ST CHARLES	10,714	1,685,196	157.3	3,152,417	2,071,364	5,223,781	\$3.10	\$488
304	GENEVA	4,833	697,661	144.4	1,872,279	808,213	2,680,492	\$3.84	\$555
	TOTAL 2004-2005	72,717	12,452,609	171.2	\$24,458,966	\$25,550,112	\$50,009,078	\$4.02	\$688
	TOTAL 2003-2004	73,230	12,146,434	165.9	\$21,107,819	\$22,950,086	\$44,057,905	\$3.63	\$602
	CHANGE	(513)	306,175	5.3	\$3,351,147	\$2,600,026	\$5,951,173	\$0.39	\$86
	PCT CHANGE	-0.7%	2.5%	3.2%	15.9%	11.3%	13.5%	10.6%	14.3%
	FY05 STATE TOTAL	1,092,980	189,655,820	173.5	\$323,607,390	\$228,607,467	\$552,214,857	\$2.91	\$505

Assessed Valuation Per ADA – School Property – Bonded Indebtedness

DISTRICT	ASSESSED VALUATION FY2004	ASSESSED VALUATION PER FY04 ADA	TOTAL SCHOOL TAX RATE	ORIGINAL COST			PCT CHG	% OF BONDING POWER USED AS OF 6- 30-05
				OF PROPERTY EQUIPMENT AS OF 6-30-04	BONDED INDEBTEDNESS AS OF 6-30-04	BONDED INDEBTEDNESS AS OF 6-30-05		
U46 ELGIN	4,216,284,127	120,624	4.9285%	530,526,705	390,302,644	668,795,935	71.4%	67.1%
101 BATAVIA	985,327,178	179,936	4.1085%	91,232,529	52,510,000	49,595,000	-5.6%	38.6%
129 AURORA WEST	1,398,931,325	135,071	3.2297%	115,100,530	130,990,000	128,825,000	-1.7%	67.9%
131 AURORA EAST	682,122,454	67,178	3.0160%	120,465,973	41,210,678	76,491,245	85.6%	43.8%
300 DUNDEE	2,654,031,810	163,647	3.6303%	164,818,186	141,919,323	136,956,384	-3.5%	38.7%
301 CENTRAL	386,248,515	172,125	4.9675%	43,903,128	27,396,822	23,262,936	15.1%	51.4%
302 KANELAND	569,810,683	191,533	4.4797%	83,220,470	61,306,825	61,326,825	0.0%	78.0%
303 ST CHARLES	2,565,835,641	221,002	3.8427%	223,432,742	167,888,666	167,455,000	-0.3%	47.4%
304 GENEVA	1,072,636,322	214,313	4.3704%	135,694,882	81,645,119	117,085,855	43.4%	55.2%
TOTAL FY2005	14,531,228,055	146,790	---	1,508,395,145	---	1,429,794,180	30.6%	54.6%
TOTAL FY2004	13,280,610,126	131,772	---	1,408,405,075	1,095,170,077	---	3.0%	58.0%
TOTAL FY2003	11,904,908,410	122,076	---	1,229,590,967	2,190,340,154	---	5.4%	61.4%
TOTAL FY2002	10,613,770,215	112,429	---	1,117,378,053	1,009,111,161	---	38.9%	58.0%
TOTAL FY2001	9,694,835,730	108,192	---	976,949,384	1,652,343,981	---	1.631	46.7%

Classroom Buildings in Use – 7/01/04 – 6/30/05

DISTRICT	ELEMENTARY SCHOOL		MIDDLE OR JUNIOR HIGH SCHOOL		SENIOR HIGH SCHOOL		MOBILE CLASSROOM		OTHER SPECIAL ED, VOC ED, ETC	
	FY05	FY04	FY05	FY04	FY05	FY04	FY05	FY04	FY05	FY04
U46 ELGIN	40	39	8	7	4	4	35	76	2	3
101 BATAVIA	6	6	1	1	1	1	0	0	0	0
129 AURORA WEST	11	12	3	3	1	1	4	4	2	0.5
131 AURORA EAST	12	12	3	3	1	1	0	0	1	0.5
300 DUNDEE	13	13	3	3	2	2	1	1	4	4
301 CENTRAL	3	3	1	1	1	1	3	0	0	0
302 KANELAND	3	2	1	1	1	1	8	13	1	1
303 ST CHARLES	12	12	3	3	2	2	5	5	1	1
304 GENEVA	5	5	1	1	1	1	1	0	1	0
TOTAL	105	104	24	23	14	14	57	99	12	10

FY 2005 Life Safety

# DISTRICTS	TOTAL SITES	FY2005 NOTATIONS	AVERAGE SITES	FY2004 NOTATIONS	CHANGE 2004 TO 2005	CORRECTED NOTATIONS	CORRECTED SITES
U46 ELGIN	54	1592	29.48	754	838	58	1.07
101 BATAVIA	8	264	33.00	11	253	0	0.00
129 AURORA WEST	18	545	30.28	45	500	0	0.00
131 AURORA EAST	18	632	35.11	42	590	0	0.00
300 DUNDEE	24	1098	45.75	668	430	33	1.38
301 CENTRAL	5	170	34.00	2	168	0	0.00
302 KANELAND	5	229	45.80	6	223	0	0.00
303 ST. CHARLES	18	588	32.67	111	477	31	1.72
304 GENEVA	8	177	22.13	9	168	0	0.00
TOTAL	158	5295	33.51	1648	3647	122	0.03

FY 2005 Construction and Occupancy Permits

# DISTRICT	NEW SITES	REPAIRS/ RENOVATIONS	ADDITIONS	TOTAL REQUESTED	APPROVED
U46 ELGIN	1	20	0	21	21
101 BATAVIA	0	2	0	2	2
129 AURORA WEST	2	33	0	35	35
131 AURORA EAST	0	4	2	6	6
300 DUNDEE	1	0	0	1	1
301 CENTRAL	0	5	0	5	5
302 KANELAND	1	4	0	5	5
303 ST. CHARLES	1	5	1	7	7
304 GENEVA	1	1	0	2	2
TOTAL	7	74	3	84	84

Certified Personnel – 7/01/04 - 6/30/05

		DEGREES - SALARIES - EXPERIENCE - STAFF/STUDENT RATIOS								
		TOTAL CERTIFIED (INCLUDE PART TIME)	DOCTORS & ED SPEC/CAS DEGREE	MASTERS DEGREE	BACHELORS DEGREE	TEACHERS AIDES (INCLUDE PART TIME)	AVG. SAL. FULL-TIME CERTIFIED TEACHERS	%	AVG. SAL. CERTIFIED ADMIN	
DISTRICT										
U46	ELGIN	2407	43	1557	807	438	\$35,600	9%	\$89,000	
101	BATAVIA AURORA	432	9	282	141	68	\$60,660	0%	\$72,665	
129	WEST AURORA	823	8	537	278	232	\$48,683	9%	\$85,966	
131	EAST	1153	15	394	744	194	\$45,497	0%	\$89,982	
300	DUNDEE	1123	29	799	295	323	\$54,384	5%	\$96,048	
301	CENTRAL	188	6	121	61	36	\$58,159	9%	\$91,723	
302	KANELAND	283	4	176	103	28	\$49,794	0%	\$71,011	
303	ST CHARLES	1041	32	617	392	212	\$47,639	8%	\$86,285	
304	GENEVA	396	17	273	106	119	\$55,583	1%	\$98,000	
		% = TRS AMOUNT PAID BY DISTRICT					# TRS PAYMENT VARIES			
TOTAL FY2005		7846	163	4756	2927	1650	\$50,667		\$86,742	
			1.7%	50.1%	30.8%	17.4%				
TOTAL FY2004		7541	177	4420	2944	1671	\$50,861		\$86,796	
			1.9%	48.0%	32.0%	18.1%				
		AVG. YRS. EXPERIENCE	ENROLLMENT PER CERTIFIED STAFF MEMBER FY2005	ENROLLMENT PER CERTIFIED STAFF MEMBER FY2004	TEACHER TO ADMINISTRATIVE STAFF RATIO	OTHER SUPPORT STAFF	ENROLLMENT TO SUPPORT STAFF RATIO	ENROLLMENT PER FALL HOUSING RPT FY2005		
DISTRICT		IN ILLINOIS								
U46	ELGIN	13.0	16.2	16.1	13.0	1,920	20.3		38,976	
101	BATAVIA AURORA	9.5	14.2	13.8	18.6	97	63.4		6,154	
129	WEST AURORA	10.8	14.7	14.2	14.8	255	47.6		12,130	
131	EAST	18.0	10.2	9.9	28.6	189	62.4		11,786	
300	DUNDEE	12.2	16.3	16.2	15.5	531	34.4		18,262	
301	CENTRAL	13.0	13.0	12.8	16.1	109	22.3		2,436	
302	KANELAND	10.0	12.8	11.7	14.7	131	27.6		3,616	
303	ST CHARLES	10.7	12.9	12.5	16.4	379	35.3		13,380	
304	GENEVA	11.5	14.3	14.0	16.2	240	23.7		5,680	
TOTAL		12.1	13.8	13.5	15.9	3,851	29.2		112,420	
PRIOR YEAR		11.9	14.2	14.3	15.2	3,743	29.5		110,373	

**FY05 ENROLLMENT
ENROLLMENT - PUBLIC SCHOOLS - SEPT, 2004**

DIST	SCHOOL	FY04	TOTAL	PRE-K	K-5	6-8	9-12
U46	ELGIN	38,821	38,976	998	18,547	8,922	10,509
101	BATAVIA	5,956	6,154	37	2,853	1,477	1,787
129	AURORA WEST	11,717	12,130	335	5,750	2,820	3,225
131	AURORA EAST	11,420	11,786	203	6,502	2,547	2,534
300	DUNDEE	18,175	18,262	411	8,535	4,213	5,103
301	CENTRAL	2,413	2,436	18	1,049	577	792
302	KANELAND	3,325	3,616	26	1,772	824	994
303	ST CHARLES	13,002	13,380	94	6,020	3,209	4,057
304	GENEVA	5,549	5,680	47	2,533	1,417	1,683
TOTAL FY05			112,420	2,169	53,561	26,006	30,684
TOTAL FY04			110,378	1,889	53,069	25,514	29,906

ENROLLMENT - NON-PUBLIC SCHOOLS - SEPT, 2004

(INCLUDES RESIDENT & NON-RESIDENT)

DIST	SCHOOL	FY04	TOTAL	PRE-K	K-5	6-8	9-12	SPECIAL ED	
								K-8	9-12
U46	ELGIN	3,585	2,920	296	1,160	553	911	75	114
101	BATAVIA	1,057	895	227	174	34	460	0	0
129	AURORA WEST	3,026	3,004	251	1,100	551	1,102	0	0
131	AURORA EAST	1,436	1,093	222	674	197	0	0	0
300	DUNDEE	1,001	974	156	440	236	142	52	57
301	CENTRAL	85	77	0	38	39	0	0	0
302	KANELAND	82	0	0	0	0	0	0	0
303	ST CHARLES	1,013	829	128	500	201	0	0	0
304	GENEVA	845	898	199	498	201	0	0	0
TOTAL ALL DISTRICTS FY05			10,690	1,479	4,584	2,012	2,615	127	171
TOTAL FY04			12,130	1,617	5,318	2,423	2,484	134	154

ISBE Federal and State Revenue

ISBE FEDERAL & STATE REVENUE FISCAL YEAR ENDING JUNE 30, 2005

	STATE AID	STATE - OTHER	FEDERAL	TOTAL	\$ PER ADA
U46 ELGIN	64,287,676	35,593,012	20,007,951	119,888,639	3,430
101 BATAVIA	6,647,288	2,844,085	497,045	9,988,417	1,824
129 AURORA WEST	19,398,712	9,357,556	6,692,159	35,448,427	3,423
131 AURORA EAST	38,209,276	9,867,480	10,203,364	58,280,120	5,739
300 DUNDEE	22,758,808	12,886,444	8,739,900	44,385,152	2,737
301 CENTRAL	1,326,722	1,860,805	71,117	3,258,644	1,452
302 KANELAND	3,356,442	2,461,617	185,716	6,003,775	2,018
303 ST CHARLES	4,081,720	7,489,113	1,182,879	12,753,711	1,099
304 GENEVA	1,775,449	3,106,939	180,475	5,062,863	1,012
TOTAL FY2005	161,842,093	85,467,050	47,760,606	295,069,749	2,981
TOTAL FY2004	160,788,900	80,389,943	41,737,903	282,916,746	2,858
CHANGE	0.7%	6.3%	14.4%	4.3%	\$122.71

Federal & State Flow-Thru Revenue

FEDERAL & STATE FLOW-THRU REVENUE FISCAL YEAR ENDING JUNE 30, 2005

	VALEES FY04	VALEES FY05	CHANGE	KANE ROE FY04	KANE ROE FY05	CHANGE	TOTAL CHANGE		
FY03 REVENUE REC'D FY04							\$0	0.0%	
VOC ED - TECH PREP	3200	94,110	91,740	(2,370)			(\$2,370)	-0.4%	
VOC ED - SECONDARY	3220	1,091,831	1,018,572	(73,259)			(\$73,259)	-12.4%	
VOC ED - AGRICULTURE ED	3235	16,689	28,812	12,123			\$12,123	2.0%	
VOC ED - ELEM CAREER DEV	3275	0	0	0			\$0	0.0%	
VOC ED - PERKINS-IIC	4745	457,914	471,558	13,644			\$13,644	2.3%	
ROE SYSTEM OF SUPPORT				310,955	555,833	244,878	\$244,878	41.3%	
ROE READING FIRST				110,000	271,213	161,213	\$161,213	27.2%	
ISBE - STATE FUNDS				685,481	810,900	125,420	\$125,420	21.2%	
FEDERAL - NO CHILD LEFT BEHIND				1,908,650	2,019,247	110,597	\$110,597	18.7%	
TOTAL		1,660,544	1,610,682	(49,862)	3,015,086	3,657,193	642,108	592,246	100.0%

Revenue and Expenditure Analysis

REVENUE AND EXPENDITURE ANALYSIS

SOURCE OF FUNDS - 7/1/03 - 6/30/04

	STATE AID	OTHER STATE	LOCAL	FEDERAL	TOTAL	
ELGIN	64,287,676	78,080,747	209,469,103	18,146,662	369,984,188	
BATAVIA	6,647,288	3,149,061	38,521,039	1,261,254	49,578,642	
WEST AURORA	19,398,712	8,542,616	56,480,460	6,093,621	90,515,409	
EAST AURORA	38,209,276	11,579,961	29,306,050	11,036,413	90,131,700	
DUNDEE	22,758,808	11,643,181	95,662,925	7,960,848	138,025,762	
CENTRAL	1,326,722	2,396,272	19,582,172	396,714	23,701,880	
KANELAND	3,356,442	8,737,683	23,996,340	585,889	36,676,354	
ST CHARLES	4,081,720	17,877,957	101,459,647	2,378,210	125,797,534	
GENEVA	1,775,449	6,087,346	47,690,874	920,556	56,474,225	
REGION	\$161,842,093	\$148,094,824	\$622,168,610	\$48,780,167	\$980,885,694	

SOURCE OF FUNDS PER ADA - 7/1/03 - 6/30/04

	STATE AID	OTHER STATE	LOCAL	FEDERAL	TOTAL	ADA
ELGIN	1,839	2,234	5,993	519	10,585	34,954
BATAVIA	1,214	575	7,034	230	9,053	5,476
WEST AURORA	1,873	825	5,454	588	8,740	10,357
EAST AURORA	3,763	1,140	2,886	1,087	8,876	10,154
DUNDEE	1,403	718	5,899	491	8,511	16,218
CENTRAL	591	1,068	8,726	177	10,562	2,244
KANELAND	1,128	2,937	8,066	197	12,328	2,975
ST CHARLES	352	1,540	8,739	205	10,836	11,610
GENEVA	355	1,216	9,529	184	11,284	5,005
REGION	\$1,635	\$1,496	\$6,285	\$493	\$9,909	98,993

EXPENDITURES - 7/1/03 - 6/30/04

	INSTRUCTION	GEN ADMIN	SUPPORT	OTHERS	TOTAL	SURPLUS/ DEFICIT
ELGIN	167,566,017	3,841,966	113,239,559	84,710,642	369,358,184	626,004
BATAVIA	28,151,336	985,675	11,961,934	9,597,151	50,696,096	(1,117,454)
WEST AURORA	48,538,349	1,127,257	25,657,057	46,154,138	121,476,801	(30,961,392)
EAST AURORA	47,950,422	9,375,900	31,093,263	11,886,666	100,306,251	(10,174,551)
DUNDEE	72,985,943	1,312,448	49,164,785	32,511,119	155,974,295	(17,948,533)
CENTRAL	11,216,184	739,761	7,022,488	2,753,141	21,731,574	1,970,306
KANELAND	14,087,322	310,852	10,101,141	36,223,596	60,722,911	(24,046,557)
ST CHARLES	54,026,583	2,052,855	42,740,655	31,702,269	130,522,362	(4,724,828)
GENEVA	24,850,922	1,186,592	17,177,695	12,139,722	55,354,931	1,119,294
REGION	\$469,373,078	\$20,933,306	\$308,158,577	\$267,678,444	\$1,066,143,405	(\$85,257,711)

	EXPENDITURES PER ADA - 7/1/03 - 6/30/04					SURPLUS/ DEFICIT
	INSTRUCTION	GEN ADMIN	SUPPORT	OTHERS	TOTAL	
ELGIN	4,794	110	3,240	2,423	10,567	18
BATAVIA	5,140	180	2,184	1,752	9,257	(204)
WEST AURORA	4,687	109	2,477	4,456	11,729	(2,990)
EAST AURORA	4,722	923	3,062	1,171	9,878	(1,002)
DUNDEE	4,500	81	3,032	2,005	9,617	(1,107)
CENTRAL	4,998	330	3,129	1,227	9,684	878
KANELAND	4,735	104	3,395	12,176	20,411	(8,083)
ST CHARLES	4,654	177	3,681	2,731	11,243	(407)
GENEVA	4,965	237	3,432	2,426	11,060	224
REGION	\$4,741	\$211	\$3,113	\$2,704	\$10,770	(\$861)

	OPERATING EXPENDITURES PER ADA - 7/1/03 - 6/30/04				
	OPERATING EXP - K-12	OPER EXP PER PUPIL	OPER EXP STATE RANK	TUITION CHARGE	TUITION STATE RANK
ELGIN	279,568,544	7,998	102	6,580	121
BATAVIA	43,519,923	7,947	108	7,362	46
WEST AURORA	77,918,870	7,524	169	6,053	195
EAST AURORA	80,808,964	7,958	106	5,849	231
DUNDEE	124,460,246	7,674	144	6,519	131
CENTRAL	19,375,860	8,634	52	7,651	33
KANELAND	26,886,425	9,038	34	8,216	18
ST CHARLES	103,248,825	8,893	39	8,213	20
GENEVA	44,200,554	8,832	42	7,811	28
REGION	\$799,988,211	\$8,081		\$6,810	
STATE		\$8,786		\$7,264	

Kane County Regional Board of Trustees

The Regional Board of School Trustees is an elected body with the sole responsibility of action on detachment/annexation petitions regarding boundary changes between school districts in the region. The board meets on the first Monday of January, April, July and October. The President may call special meetings. Meetings may be canceled due to lack of agenda items. Dr. Clem Mejia, Regional Superintendent, is the ex-officio Secretary for the Board of Trustees. The members of the Regional Board of School Trustees are:

Kay Clancy St. Charles Township	<u>Term Expires</u> 2007	Lyle Oncken Sugar Grove Township	<u>Term Expires</u> 2007
Dave Henderson Dundee Township	2007	G. Michael Stoffa Blackberry Township	2011
James Murphy Aurora Township	2007 (Unexpired 2009)	Penny Wegman Elgin Township	2011
		Jon Zahm Virgil Township	2009