

KANE COUNTY REGIONAL OFFICE OF EDUCATION



Dr. Clem Mejia, Regional Superintendent
Julie Vallejo, Associate Superintendent

2005-2006 ANNUAL REPORT



TABLE OF CONTENTS

Legislative Development of the Office.....3

Organization Chart.....4

Legal Reference for Annual Report5

Representative Activities and Duties of the Regional Staff.....5

Budget----County Portion Only.....5

Institute Fund Report6

Kane County Educator of the Year Awards6

Kane County Visual Media Coop.....7

School Safety and Security7

Juvenile Justice Center.....7

General Educational Development (G.E.D.)7

Home-Schooling7

Dropout Intervention Project7

Positive Behavior Interventions and Support8

Masters/Doctorate & Counselor’s Cohort.....8

Kane County Youth Outreach Program.....8

Regional Safe Schools Program.....9

System of Support, RESPRO Area 1-C9

Area One Homeless Education Program.....9

Reading First9

Gifted Education9

Illinois Administrators’ Academy10

Kane County Human Resources Consortium (KCHRC).....10

Career Awareness & Development & ETC.....10

Career Cruising.....10

Sixteenth Circuit Court Gang Task Force.....11

Middle School Endorsement Program.....11

Professional Development11

Technical Assistance to Schools.....13

Kane County Government Computer Courses.....13

Learning Technology Services.....13

Area One West Learning Technology Center13

Networks14

District Transportation Analysis.....14

Classroom Buildings in Use – 7/01/05 – 6/30/0614

Assessed Valuation Per ADA – School Property – Bonded Indebtedness.....15

FY 2006 Life Safety.....16

FY 2006 Construction and Occupancy Permits.....16

Certified Personnel – 7/01/05 - 6/30/06.....17

School Enrollment – 7/01/05 – 6/30/0618

ISBE Federal and State Revenue.....18

Kane County Regional Board of Trustees19

Legislative Development of the Office

1829	The sixth General Assembly mandated appointment of a Commissioner of School Lands.
1841	Title changed to County Commissioner and Ex-Officio County Superintendent of Schools.
1865	Legislature called for the election of the County Superintendent of Schools.
1973	Consolidation of smaller counties resulted in 78 regions.
1975	Title of Chief Administrative Officer of an education service region changed to Regional Superintendent of Schools.
1977	Further consolidation resulted in 57 regions in Illinois.
1993	Educational Service Region office renamed Regional Office of Education.
1995	Further consolidation resulted in 45 regions, each with a population of at least 45,000 inhabitants.

Regional Superintendents of Schools

R.B. "Bink" Mades	Prior to 1975
James L. Hanson	1975 – 1987
Dr. Douglas L. Hoeft	1987 – 1992
Dr. Clem Mejia	1993 - 2007

Superintendent of Educational Service Region

The act of Congress which admitted Illinois to the Union in 1818 set aside the sixteenth section of every township for the use of schools. In 1819, therefore, the General Assembly directed the county commissioners' court in each county to appoint three trustees from each township. These trustees, whose terms ran for four years, were charged with hiring a surveyor, laying out section 16 into lots, leasing those lots for no more than a ten year period, and appointing a clerk and treasurer to handle the leases.¹ In 1827 this was modified to give the trustees responsibility for laying out school districts within the township. These districts were to contain no fewer than 18 scholars, and the trustees were to hire a teacher for the district.²

The situation changed in 1829, when Congress agreed to permit the sale of section 16 lands. For the first time, the county commissioners' court could appoint a commissioner and agent for the county school lands. This position was the predecessor of the regional superintendent of schools. The commissioner was required to prepare a record of the school lands in the county. When nine-tenths of the voters in any township decided to sell their school lands, they were required to petition the commissioner in writing. In turn, he arranged the sale, and loaned the money from the sale back to the township.³

During the 1830's, minor changes were made in the school law. The percentage of voters required to sign a petition for sale of school lands was reduced and the county commissioners' court again appointed township school trustees. Most important, in 1837 the citizens of a township were given the choice of incorporating for the purpose of establishing and supporting common schools. The trustees were assigned the superintendence of the township schools, and they could appoint a clerk, who would also act as treasurer.

The school land commissioner was required to pay to this treasurer all of the money in his care which belonged to the township, and would deliver to him all bonds, notes, and mortgages. The township treasurer made an abstract, in return, which showed the name of each teacher, the number of scholars at each school, and the total number of days taught. The treasurer was to deliver this abstract to the school land commissioner and receive the interest due the township from the state's school, college, and seminary lands.⁴

In 1841, the office of school commissioner became elective, for a term of two years. This same year, each school district was required to elect a board of three school directors, also for two-year terms. The school directors were empowered to select building sites, build schools, employ teachers, and visit the district schools. In townships which had not chosen to incorporate, the trustees of school lands could appoint school directors if none were elected.⁵

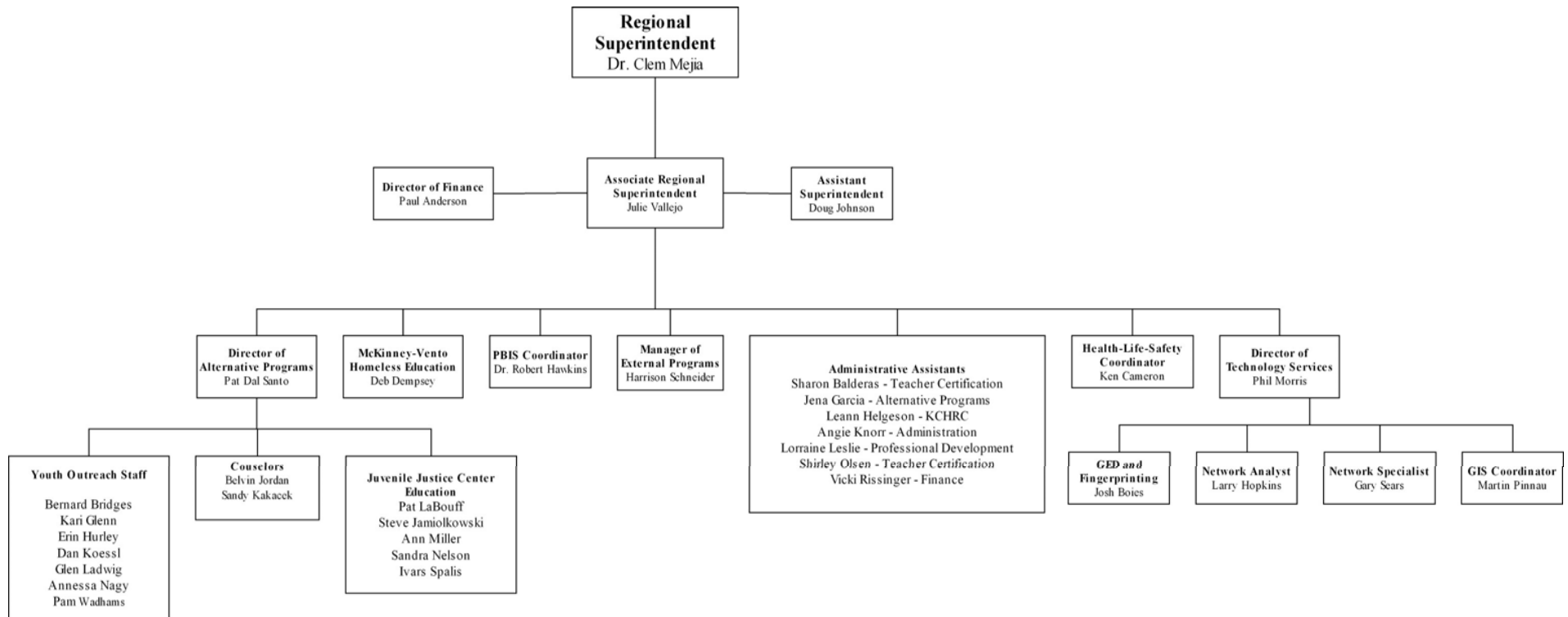
The school law was under continual revision during the 1840's, and in 1845 the school commissioner was made *ex officio* county superintendent of the common schools. His duties included visiting the schools, examining teachers, and issuing certificates.⁶ By 1865, each county elected a superintendent of schools every four years. Township school trustees reported to this superintendent on the number of schools, the number of scholars, the number of male and female teachers, the compensation of teachers, the number of persons under age 21 in the township, the principal and interest of the township fund, the amount of the common school fund received by the treasurer, the amount raised by taxation, all other receipts and expenditures, and any other information required by the superintendent.⁷

The primary duties of the present superintendent of an educational service region remain much the same as they were in the nineteenth century. The superintendent conducts teachers' institutes, handles the school lands, visits the schools, examines the accounts of all school treasurers in the county, and distributes state money for education to the school districts in his charge.⁸

Kane County Regional Office of Education Organization Chart

Our Mission is to provide leadership in the learning community by:

- *Developing Educational Resources*
- *Facilitating Learning*
- *Collaborating with all Educational Partners*



Legal Reference for Annual Report

This Annual Report is designed in part to meet the provisions of Chapter 105, Article 3, Section 5/3-6 and Section 5/3-15.8 of the School Code of Illinois. The report of schools visited and meetings attended as required by Section 5/3-5 is provided quarterly to the Public Service Committee of the Kane County Board. In addition, as established in Chapter 105, Article 2, Section 5/2-3.62 in the School Code of Illinois, the Regional Office of Education shall provide services to support administrators and teachers in the planning, implementation, and evaluation of education for gifted children, computer technology education, mathematics, science, and reading. The Regional Office of Education may provide training, technical assistance; coordination and planning in other program areas such as school improvement, career guidance, alcohol/drug education and prevention, and alternative education.

Representative Activities and Duties of the Regional Staff

Processed approximately 1,598 new applications for teaching certificates and registered over 8,789 certificates.

Visited each of the 166 public school buildings in the Region to monitor life/safety requirements.

Appointed instructors for school bus driver classes, held 15 initial bus training classes for 249 new drivers and 67 bus refresher classes for 1,277 drivers.

Distributed information on bus safety by meeting with School District Transportation Directors.

Assisted the State Board of Education during its recognition visits of Kane County School Districts. Provided school officials and the general public with information regarding area school districts and the School Code of Illinois.

Reviewed and approved, or returned for correction, a multitude of State Board of Education reports and applications filed by local school districts.

Regional Superintendent Mejia served on the following committees: Kane County Child Advocacy Board; Kane County Workforce Development Board; Illinois Association of Regional School Superintendents; Past President for Illinois Association of County Officials; Association for Individual Development Board.

Associate Superintendent Vallejo served on the following committees: Council for Exceptional Children; Illinois Association of Regional School Superintendents; Northern Illinois Superintendents' Roundtable; Kane County Safe Schools Committee; Northern Illinois Chapter of Phi Delta Kappa; State Scholarship Committee and the Adjunct Faculty at Aurora University.

Budget-----County Portion Only

Funds for the operation of the Kane County Regional Office of Education are provided by Kane County. This does not include salaries for the Regional Superintendent and the Associate Regional Superintendent, both of whom are paid by the State of Illinois. Nor does it include wages and operating expenses of the Visual Media Co-op, which is funded by membership fees or for the Professional Development Services Division which is funded by the Illinois State Board of Education. The following budget and expenditure figures are based on the County's fiscal year, which runs from December 1st through November 30th.

KANE COUNTY BUDGET

	<u>FY04</u>	<u>FY05</u>	<u>FY06</u>
	<u>Budget</u>	<u>Budget</u>	<u>Budget</u>
Salaries	226,419	230,948	230,948
Operations & Other	19,485	19,485	19,485
Discretionary Total	245,904	250,433	250,433
Health & Dental	75,444	68,775	68,775
TOTAL	321,348	319,208	319,208

Institute Fund Report

INSTITUTE FUND FINANCIAL REPORT JULY 1, 2005 THROUGH JUNE 30, 2006

BEGINNING FUND BALANCE, JULY 1, 2005		477,310.22
RECEIPTS		
1 YR REGISTRATIONS	8,755.00	
MULTI-YEAR REGISTRATIONS	116,773.75	
REGISTRATION RENEWALS-PAST YEAR	858.00	
DUPLICATE CERTIFICATES	924.00	
TEACHER CERT APPLICATION	52,434.00	
DUE TO ISBE-TEACHER CERT APPL	(56,912.00)	
INTEREST	3,748.31	
EDUCATOR OF THE YEAR	21,930.00	
REFUNDS & ADJUSTMENTS	(393.00)	
	TOTAL RECEIPTS	148,118.06
DISBURSEMENTS		
OTHER PURCHASED SERVICES	600.00	
TRAVEL	1,851.33	
DUES & FEES	12.00	
EDUCATOR OF THE YEAR	47,727.05	
SPELLING BEE	1,500.00	
PROFESSIONAL & TECHNICAL SERVICES	6,515.00	
MINI-GRANTS	36,035.00	
	TOTAL DISBURSEMENTS	94,240.38
ENDING FUND BALANCE, JUNE 30, 2006		531,187.90

Kane County Educator of the Year Awards

The 31st Annual Educator of the Year Awards Dinner was held at the DuPage Expo Center in St. Charles on May 12, 2006. The dinner honored 39 distinguished educators with plaques of recognition. Those who received awards of distinction were:

Award Given	Name	District
Educator of the Year	Paul R. Hardt	District 300
Regional Superintendent Award	Geri Shouba	District 303
Regional Superintendent Award	Todd E. Stirn	District 301
R. B. Mades Associate Educator of the Year	Beth Plachetka	District 304
Elementary Educator of the Year	Lisa Feltman	District 300
J.L. Hanson Middle School Educator of the Year	Charles Arthur Bibb	District 129
D.L. Hoelt High School Educator of the Year	Diana Voigt	District 302
Administrator of the Year	Kelly McCleary	District 131
Private/Parochial Award	Dianne Raymond	Mooseheart
Support Staff Award	Shari Haines	District 101

Kane County Visual Media Coop

The Kane County Visual Media Cooperative was established in 1938 to serve the teachers and staff in our region by providing educational 16mm films, videotapes and laserdiscs for their classroom use. The cooperative contains over 2,000 educational titles.

The Kane County ROE desolved the Visual Media Coop in September 2005 and has been offering the films to local schools which were part of the cooperative.

For questions concerning this program, contact Phil Morris (pmorris@kane.k12.il.us)

School Safety and Security

In the past several years school security and student safety have become major concerns across the nation as well as in Illinois. The Kane County ROE has sponsored numerous related programs that have involved all nine school districts within its jurisdiction. Collaborative program planning continues in this important area, especially in conjunction with the 16th Circuit Court Gang Task Force.

- Sex Offenders: A Community Containment Model
- Drugs: A Community Crisis
- Proactive School Security Planning
- Multi-Hazard Emergency Planning for Illinois Schools – Creating an Action Plan
- PBIS (Positive Behavioral Interventions and Supports)
- How To Cope With A Bully (Gum In My Hair)

Participants: More than 425

Juvenile Justice Center

The educational program at the Juvenile Justice Center is administered by the Kane County Regional Office of Education. An intergovernmental agreement between the Regional Office of Education, St. Charles School District, and the Chief Judge assures that the Regional Office of Education is responsible for the educational program for the students at the Juvenile Justice Center. The teachers provide daily instruction to meet the educational needs of the students in a continuous learning calendar. During this year, 788 students received educational services from the Juvenile Justice Center teachers. A reintegration specialist serves as a liaison between the center and the students' home school to assure a smooth transition into the regular academic program.

General Educational Development (G.E.D.)

The Regional Superintendent is delegated with the responsibility of administering The G.E.D. testing program in accordance with the Illinois School Code. This program allows those who are 18 years of age, whose high school class has graduated and have been out of the school system for one year to secure a High School Equivalency Certificate upon completion and passing all tests.

Testing centers have been established in Kane County at Waubensee Community College in Sugar Grove and at the Regional Office of Education in Geneva. The tests require two days and are administered on consecutive Saturdays. The Kane County Regional Office of Education has become an official scoring center and has installed equipment for scanning and scoring all tests except the essay portion.

A \$35.00 fee is charged to cover the cost of tests, administration of tests, grading, and for the certificate.

	7/01/05---6/30/06
GED Registrations	781
Retests	539
Tests Passed	471
Transcripts Processed	479

Home-Schooling

The Regional Office of Education serves as a resource to those parents who are interested in home-schooling their children. Information is shared with the parents to assist them. A request is made for parents to register with the regional office as a home-schooling parent and assure that education is being provided to their children. There are no fees collected for resource information.

Dropout Intervention Project

The 2005-2006 school year marked the 18th year of this project. The goal of the Dropout Intervention Project is to bring "disconnected" youth from 16-21 years of age back into the mainstream of society. As of June 2006, the Project enrolled 64 students in the GED Program. Three hundred thirty-three students were provided dropout interventions.

Positive Behavior Interventions and Support

The 2005-2006 school year marked the 5th year of the project. This program serves schools in Kane, Lake, and DeKalb Counties from the Kane County ROE. PBIS leads school teams in elementary, middle, and senior high schools through a three-to-five year process that enhances the positive behavior and social skill development of all students in support of effective teaching and learning. As of June 30, 2005, thirty-three schools in Kane County, five in DeKalb County, and two in Lake County serving over 25,000 students are currently involved. Sixty-one administrators have attended the PBIS Administrator Academies in Kane County. In addition, forty individuals received advanced training in Kane County on the School-wide Information System (SWIS) web-based student behavior management data system that is used in PBIS schools throughout the country to manage their student discipline data.

Masters/Doctorate & Counselor's Cohort

Aurora University and the Regional Office of Education have collaborated to develop and provide a Masters Degree program for the teachers in Kane County. The teachers may receive their degree through a program of Masters in Teaching or Masters in Educational Leadership.

Approximately 1,600 teachers have participated in this program.

Aurora University and the Regional Office of Education have collaborated to develop and provide a Doctorate Degree Program. The individuals may receive their degree through a program of Doctorate in Educational Administration or Doctorate in Curriculum.

Kane County Youth Outreach Program

In 2005-2006 we completed the 21st year of the Kane County Truancy Prevention Program and continued the 18th year of the Kane County Dropout Intervention Project.

Kane County had 1,561 "official" referrals from our local schools requesting truancy assistance from our staff. The services provided during the 2005-2006 year were the following:

<u>SERVICES</u>	<u>2005-2006</u>	<u>2004-2005</u>
School Visits	3,651	3,705
Home Visits	1,238	1,246
Student Contacts	3,550	3,518
Community Agency Contacts	832	824
School Conferences	523	460
Regional Conferences	57	41
Classroom Prevention Presentations	25	29
Retrieved Dropouts to GED Program	85	61
Juvenile Court Cases	36	35
Adult Court Cases	12	13

(*1,362 served)

Funding: \$319,283

<u>SOURCE OF REFERRALS</u>	<u>2005-2006</u>	<u>2004-2005</u>
<u>By District</u>		
U46 Elgin	413	359
101 Batavia	15	14
129 West Aurora	344	299
131 East Aurora	463	352
300 Dundee/Carpentersville	237	232
301 Central	4	0
302 Kaneland	2	2
303 St. Charles	64	42
304 Geneva	8	7
Other	11	2
<u>By Grade Level</u>		
Elementary K-5	610	350
Middle School	515	368
High School	388	285
Other	48	0
<u>By Gender</u>		
Males	790	644
Females	771	659
TOTAL	1,561	1,303

Regional Safe Schools Program

The Regional Safe Schools Program (RSSP) began with a planning and implementation grant in school year 1996-1997. This program is a result of legislation providing programs for disruptive students who are eligible for suspension or expulsion. The legislature appropriated \$15 million for safe school programs. Regional Offices of Education wrote program grants to access this money. These funds are renewable on an annual basis and are used by Kane County to provide educational programs to disruptive students in a variety of ways. During the 2005 - 2006 school year, Districts U-46, Mid-Valley (Districts 101, 301, 302, 303, 304), and District 300 operated alternative to expulsion programs. All the above programs are under the auspices of the Kane County Regional Office of Education.

In 2005 – 2006 approximately 205 students were served in the above programs. They were served at 5 different sites. All of these students were eligible for expulsion or had multiple suspensions. Instead they attended RSSP sites in their local districts. Eighty percent of these students completed the program successfully. Due to the RSSP, expulsions have been reduced by 63% in Kane County since the 1994-1995 school year.

System of Support, RESPRO Area 1-C

The Kane County Regional Office Education's role in the system of support is to create a powerful and effective partnership between the System of Support schools and Regional System of Support Provider (RESPRO Area 1-C) to improve teaching and learning, student learning, and the learning community. Support and assistance was provided through direct training, on site support and technology integration for eligible individual schools and public school districts aligning with the goals articulated in the state's System of Support and No Child Left Behind guidelines.

Funding: \$1,016,253

Area One Homeless Education Program

Homeless children and youth face numerous obstacles in obtaining an education. The goal of the Area One Homeless Education Program is to provide programs that will ensure the removal of barriers and provide for the enrollment, attendance and educational success of homeless children. This program focuses on schools and communities in Area One (Lake, McHenry, Suburban Cook, DuPage, Kendall, Grundy and Kane counties).

This program is administered by the Kane County Regional Office of Education and funded by the Illinois State Board of Education through the McKinney-Vento Education Assistance Act of 2001.

Funding: \$397,179.00

Reading First

The Federal No Child Left Behind's Reading First program, authorized under Title I, Part B, Subpart 1 of the Elementary and Secondary Education Act (ESEA), is a national initiative to improve reading in kindergarten through grade three by implementing a classroom reading program based on phonemic awareness, phonics, vocabulary development, reading fluency and reading comprehension strategies. The Kane County Regional Office of Education works cooperatively with other regional and state agencies to provide technical assistance services, including professional development, to facilitate implementation of the Reading First program.

The Kane County ROE works closely with Reading First schools and districts to provide the comprehensive Reading First Academy trainings for all kindergarten through third grade teachers and special education teachers. Training and technical support for improvement of reading instruction and raising student achievement in these schools includes planning, assessment, evaluation, and ongoing professional development for instructional staff, building leadership, and coaches.

Funding: \$156,216

Gifted Education

The Regional Office of Education provides support and training to enhance our districts' ability to meet the special needs of students in each respective district.

- ROE State Raising Student Achievement Conference *
- Illinois Association for Gifted Children State Conference *
- Kane County Gifted Services Network
- High School Gifted Pilot Project
- Level I & II Gifted Institute Training
- Genius Denied Seminar

Participants: 169

Funding: \$13,200

* Attendance at the two state conferences exceeded 1200 participants.

Illinois Administrators' Academy

Individuals employed in positions requiring a Type 75 certificate as a condition of employment (Illinois School Code Section 5/24A-3) are required to complete a minimum of one Illinois administrators' academy each year.

Administrators' Academy offerings for 2005-2006:

Introduction to the Evaluation of Certified Staff (four sessions)	Standards for the Principal/Administrator
Local Assessments Aligned With State Standards	The 17 Indisputable Laws of Teamwork
Training to Select and Develop Great Teachers – Introductory	Multi-Hazard Emergency Planning for IL Schools-Creating an
Training to Select and Develop Teachers – Advanced Phase II	Action PlanData-Driven Decision-Making
A Framework For Understanding Poverty	Measures of Success: Evaluating the Effective use of Technology
Learning Structures	The Digital Leader @School: Using Technology Successfully
Supporting Reading Instruction Through Formative Supervision	Introduction of SMARTGoals
Teacher Evaluation: Converging Perspectives	Training to Select & Develop Great Administrators – An
ODD GIRL OUT: The Hidden Culture of Aggression in Girls	Introduction
Focused Walk Evaluating Student Engagement in Schools	Developing the Leaders Around You
Curriculum Mapping to Raise Achievement	School Improvement Planning: Meeting Criteria for an ISBE
Legal Aspects of Student Records	Approved SIP
Legal Issues in Special Education	Curriculum Based Evaluations: Evaluating Teacher Performance
Curriculum Modification for At-Risk and Exceptional Learners	on Best Practices in Math and Reading
Using Data to Ignite Student and Teacher High Performance	Teacher Style Profile Training for KCHRC
The Principal's Role in the Instructional Process	Functions of the Middle School
PBIS (Positive Behavioral Interventions & Supports) (four sessions)	Developmental Issues in Early Adolescent Education
Change - Who Moved My Cheese?	The Best Kept Secret: Success through Careers in the Building
The 21 Indispensable Qualities of a Leader	Trades Industry

Funding: Self Sustaining

Participants: 1,276

Kane County Human Resources Consortium (KCHRC)

The KCHRC continued to grow substantially in its fourth year in existence. This on-line teacher application system has processed more than 20,000 applications resulting in the hiring of more than 1,500 staff members.

All nine Kane County public school districts contributed funds totaling \$49,000 to support the project. The KCHRC meets twice each month, the first time to deal with KCHRC business and the second for associated professional development.

The KCHRC has received significant notoriety around the state and nation resulting in many inquiries from like entities interested in the program here in Kane County.

Funding: \$49,000

Participants: 9 of 9 school districts

Career Awareness & Development & ETC

The State funded Career Awareness & Development grant was eliminated in 2003. Several collaborative initiatives of the Kane County ROE, VALEES, Northern Kane EFE, the nine Kane County public school districts, and the Illinois School Counselors Academy related to the grant continued to develop on a self-sustaining basis in 2005-2006.

- Illinois School Counselors' Academy programs
- Workshop In Counseling: Emphasizing Student Academic Success by Integrating Career Development

Funding: \$20,000 (all partners)

Participants: 175

Career Cruising

Since May of 2000, the Kane County ROE, Northern Kane EFE, VALEES, and the Illinois School Counselors' Academy have collaborated in developing programs to better integrate career and technical education with the total school educational enterprise, grades K-14. The initial effort (COMET Project) included development of an electronic career portfolio for all students.

The cooperative partners identified the commercial product known as Career Cruising to meet the needs of the electronic portfolio goal. In 2005-2006 all the Kane County middle and high schools were provided Career Cruising site licenses in both the English and Spanish versions. Research indicates variable levels of implementation, but the variety and scope of program use assures that the project will continue.

Funding (all partners): \$16,000

Participants: 5,000 +

Sixteenth Circuit Court Gang Task Force

The Kane County ROE is a representative member of the Sixteenth Circuit Gang Task Force as well as a professional development program partner. The most recent program was entitled "Sex Offenders: A Community Containment Model" was held in Geneva, IL on April 28, 2006 for 158 participants.

Middle School Endorsement Program

Based on expressed needs of many Kane County teachers for the opportunity to obtain the middle school endorsement to their teaching certificates, the Kane County Regional Office of Education sponsored the following courses in 2005-2006.

- Functions of the Middle School
- Developmental Issues in Early Adolescent Education

These courses were offered on-line through Illinois State University.

Budget: Self Sustaining Participants: 56

Professional Development

The Regional Office of Education supports a wide variety of activities including institutes, workshops, conferences, networking, technical assistance, information dissemination, and consulting to meet the needs of our schools. These activities are designed to compliment the other Kane County Regional Office of Education and districts professional development programs. Our office collaborates with local, regional, and state educational partners representing both the public and private sector in creating learning opportunities for the entire Kane County Learning Community. Reading First and System of Support (RESPRO-Area 1) activities supported through No Child Left Behind (NCLB) federal funding are aligned with the goals articulated in the Illinois State Board of Education and the No Child Left Behind guidelines.

Learning Standards, ISAT, PSAE, Assessment

Reading ISAT District Trainers Workshop
 Rubric Workshops
 Data Retreat
 Local Assessments Aligned with State Standards
 Curriculum Mapping to Raise Achievement
 Using Data to Ignite Student and Teacher High Performance
 Data-Driven Decision-Making
 Measures of Success: Evaluating the Effective use of Technology
 The Digital Leader @ School
 Introduction of SMARTGoals
 Curriculum Based Evaluations
 ParaPro Assessment
 ISAT Reading: Understanding, Planning, and Mastering the New
 ISAT Extended Response

2nd Graders: Getting Them Ready for the ISAT
 Excel I
 Excel II
 RESPRO Illinois Interactive Report Card Training
 Data Analysis and the Reading First Coach Training
 Data Collection and Organization
 Problem Solving
 English Language Proficiency Standards
 Illinois Frameworks for Learning: Reading (3-8)
 Illinois Frameworks for Learning: Math (3-8)
 ISAT Reading Training
 ISAT Writing Training
 ISAT Math Training

Fundamental learning Areas and Special Interest

AgTech Tour for Teachers
 FoxMap Workshop
 Starlab Basic Training
 FOXMap Focus New Tech. & New Plans for Action
 IL Health Science Career Cluster Initiative K-6
 Illinois Health Science Career Cluster Initiative Grades 7-8
 Illinois Health Science Career Cluster Initiative Grades 9-12
 The Hidden Culture of Aggression in Girls
 Kane County Music Educators Conference
 Movement and Learning
 Trailside Teaching: Twenty ways to wow your students in the field!
 Celebrate the Earth through Literature and Activities
 AED, CPR, and Current First Aid Practices
 CPR/AED Training for Nurses
 All Aboard The Music Express
 PhotoShop in the Classroom
 SkillsTutor and New Explorations in Learning for Teachers
 Mask Making
 Differentiating Instruction for General Education Teachers
 The Sweatshop
 Sing, Play, Move, Create: Making Music More than General

Folk Dance as a tool for Teaching Rhythm, Movement and Culture
 West African Inspired Drumming
 Differentiate Instruction for ESL Teachers
 Differentiating Instruction in Math
 Differentiating Instruction in Science
 Introduction to Brain Gym @ Improvement Through Movement
 Presentation Skills Dynamics: Sharpen Your Skills
 Differentiating Instruction: Focus on English Language
 Teaching Jazz and Improvisation in the Elementary/Middle School
 Using Children's Literature to Teach about Mammals
 Fox River Watershed Conference
 United Streaming Training
 Skillstutor Training
 Illinois Frameworks for Learning: Reading (3-8)
 Illinois Frameworks for Learning: Math (3-8)
 Solving and Scoring Open-Ended Math Problems
 Middle School Math Problem Solving
 Career Cruising
 Fox River Watershed Monitoring Network Orientation Workshop
 A Day in a One-Room School
 Inspiration
 School Safety & Security: Strategies and Resources

Educational Strategies and Initiatives

RESPRO Restructuring Planning
 Effective Teamwork Leadership Training-RESPRO SOS
 Tools for Teaching
 Cooperative Learning Workshop
 Recognizing and Assisting Homeless Students in the Classroom
 National Board Certification: What's It All About?
 JUMPSTART ENTRY 4 (National Board Certification
 NBCT Cohort Candidate Support
 NBPTS Candidate Support Sessions
 Integrating Academic Success with Career Development
 Self Assessment of Teaching
 National Board Certification – Pre Candidacy Class
 Functions of the Middle School
 Developmental Issues in Early Adolescent Education
 A Framework for Understanding Poverty
 Learning Structures
 Focused Walk Evaluating Student Engagement in Schools
 The 17 Indisputable Laws of Teamwork
 Multi-Hazard Emergency Planning for Illinois Schools-Creating an
 Action Plan
 PBIS Universal Team Training
 School Improvement Planning: Meeting Criteria for an ISBE
 Approved SIP
 Change – Who Moved My Cheese?
 Col. Grossman Safety Presentation
 SkillsTutor and New Exploration
 Maximizing SkillsTutor
 Using UnitedStreaming Resources in Your Classroom
 EBSCO

SWIS Training
 Positive Behavior Intervention & Supports: Overview
 SWIS Facilitator Training
 Learning Structures
 Stress and Time Management for Teachers
 Keeping Schools Safe in a Day of Homeland Security
 Service-Learning: Engaging Students in Learning K-12
 Communication with Students, Parents, and Fellow staff
 Teaching with Pizzazz!
 Application of Learning Structures through Elementary Classroom
 Strategies
 Kindergarten / Early Childhood Conference
 Highly Effective Questioning
 Quantum Learning for Teachers
 Literacy, Laughter, and Learning
 Raising Achievement for the Secondary Student: What Can I do
 Tomorrow?
 Creating a Website to Promote Student Learning To Increase
 Communication
 Inspiration
 United Streaming
 The Seven Habits of Highly Effective People
 ELL (English Language Learners) Workshop
 ELL RESPRO Conference
 CRISS Training
 CRISS II Training
 National Board Certification
 No Child Left Behind Overview

Special Education and School Support Services

Legal Aspects of Student Records
 Legal Issues in Special Education
 Curriculum Modifications for At-Risk and Exceptional Learners
 Assistive Technology for Students with Mild Disabilities
 The Prevention and Treatment of Anger and Aggression in
 Children and Adolescents
 The Basics of English Language Learners
 Effective Inclusive Education's for Diverse Learners in the
 Classroom
 Teaching ELL Students in the Mainstream High School Classroom
 Taking Data to Demonstrate Efficacy in Special Education
 Transition Outreach Training for Adult Living

Child and Adolescent Mental Health Issues
 Language/Literacy Connection: Impact on Children with
 Communication Difficulties
 Differentiating Instruction for Special Education Teachers
 Understanding Court Services: Probation and Juvenile Detention
 Incorporating Special Education with Music Education
 Overview of Brain Structures-Neurological Impairments to
 Phonemic Fluency
 Illinois Learning Standards & Special Education
 CPR & Automated External Defibrillator Certification
 PBIS Universal Team Training
 Illinois School Counselors Academy

Reading and Writing

Reading First Academy (Grade K)
 Reading First Academy (1st Grade)
 Reading First Academy (2nd Grade)
 Reading First Academy (3rd Grade)
 Targeted Reading Conferencing
 The Daily Five
 Literacy Center Workshop K-3
 Supporting Reading Instruction through Formative Supervision
 Middle School Reading Comprehension
 Bringing Boys and Books Together
 A School-Wide Vocabulary Framework
 Developing Dynamic Writing
 Literacy & Learning: Help for Struggling Students
 Literacy Centers & Guided Reading
 Effective Reading Strategies for ELLs
 Real Life Literacy/Reading Strategies
 Using Informational Text Prof. Dev. & Classroom Resources
 Children's Literature Workshop
 Academic Vocabulary Reading and Writing Strategies
 The Writing Block-Putting It All Together

Using Technology to Support Reading and Writing Skills
 How to Keep Middle School Students Reading
 CRISS Training
 CRISS II Training
 Reading First Coach Training
 Targeted Reading Conferencing
 Data Analysis and the Reading Coach Training
 Project Connect; Skillstutor
 Literacy Centers and Guided Reading Management
 Identifying Best Practices in Reading for Administrators
 Kane County Writing Project
 DIBELS Training
 TPRI Training
 RF Coaches Toolbox Training
 Reading First: Phonemic Awareness Implementation Support
 Reading First: Phonics Implementation Support
 Reading First: Fluency Implementation Support
 Reading First: Vocabulary Development Implementation Support
 Reading First: Comprehension Implementation Support

Participants: 7,888

Funding \$ 231,446

Technical Assistance to Schools

Part of the responsibility of the Kane County Regional Office of Education is to provide technical assistance to schools and educators as they work to improve curriculum, instruction, and learning. This assistance includes presentations, facilitation, consulting, coaching, and training.

Kane County Government Computer Courses

The Regional Office of Education continues to be available to Kane County government offices throughout the year for technology workshops. For questions concerning this program, contact Phil Morris (pmorris@kane.k12.il.us).

Learning Technology Services

The Regional Office of Education provides support and training in many areas of technology. To determine the activities to provide during the year, a needs assessment is given during the year to teachers and monthly technology coordinator meetings occur. Monthly Technology Coordinator meetings are used to communicate information from the Illinois State Board of Education, and also allow dialogue between districts.

Learning Technology Services also provides technical support within the Regional Office of Education to maintain connectivity to the Illinois State Board of Education electronic systems including Teacher Certification and Administrators' Academy. It also continues to support the Safe Schools programs within Kane County school districts and support the technology implementation at the Kane County Juvenile Justice Center (JJC).

For questions concerning this program, contact Phil Morris (pmorris@kane.k12.il.us).

During this past year the following services have been provided for school districts:

- Hosting of 7 district and private school websites
- Online Registration for workshops with digital encryption
- Professional Development Library accessible from ROE website
- Maintain LiveScan Fingerprint equipment for Fingerprinting of new teachers and bus drivers in Kane County
- Hosting of over 6,000 teacher email accounts
- Digital Imaging of 180,000 records
- Consultation for KCHRC On-Line Application
- Hosted specialized training for school districts (i.e. SASI, Tech Assessment, etc.)

During FY07 look for the following additional services to be available to schools within Kane County:

- Learning through Sports -- **Behavioral Skills Education Program for School, Sports, and Life**
- Kids College -- Sports Video Games and K-8 Standards Based Skill Practice
- Updated Portal – Improved and easier access to online resources
- Blackboard 7.0 – Online course management system for teachers

Area One West Learning Technology Center

The Illinois State Board of Education established the Learning Technology Center program for the purpose of providing a coordinated, statewide support and infrastructure which assists school districts in planning for, implementing, assessing results and educating school staff in the use of technology and telecommunications in curricular, instructional and administrative functions. More information on the Learning Technology Center program can be found at <http://www.isbe.net/curriculum/elearning/default.htm>

Through this purpose, the Kane County Learning Technology Center has provided the following services using funding provided through the contract from ISBE.

- Attending Statewide Meetings
- Facilitated or Assisted schools with Technology Planning
- Provided funding for Conference Attendance for Technology Coordinators and Teachers
- Assisted Districts with funding and training for Reading / Math Initiatives using Technology
- Provide technical support for connection to the Illinois Century Network (ICN) (<http://www.illinois.net>)
- Provide network consultation for the design and implementation of Local Area Networks (LANs) and Wide Area Networks (WANs)
- Help schools with the monitoring, management, and troubleshooting of their WANs
- Work with ICN Staff to assist in troubleshooting
- Assist schools with E-Rate applications to the Federal government (<http://www.sl.universalservice.org>)
- Maintain the Kane County Educator Portal (<http://portal.kaneroe.org>)
- Provide Internet Safety Training including Parent Presentations (<http://www.isafe.org>)
- Provide Support and Training for the following online resources available to all Kane County Schools:
 - United Streaming (<http://www.unitedstreaming.com>)
 - EBSCO (<http://www.epnet.com>)
 - SkillsTutor (<http://www.skillstutor.com>)
 - Encyclopedia Britannica (<http://www.eb.com>)

For questions concerning this program, contact Phil Morris (pmorris@kane.k12.il.us).

Funding: \$68,233

Networks

This system of educator networks is provided to showcase best practices in respective content areas, develop leadership for instructional improvement, solve instructional and assessment concerns, and promote the professional development of teachers in their content areas. Each network meets multiple times each year, depending on the professional needs of the participants and the goals of the respective network.

- Kane County Gifted Services Network
- Special Education Directors Network
- Learning Leaders Network
- Reading Leaders Network
- Technology Leaders Network

Participants: 216

Funding: \$2400

District Transportation Analysis

7/1/2005 - 6/30/2006

District	Average Number of Regular Transportation pupils Transported Per Year	Transportation Miles					Direct Costs				
		Regular	Vocational	Special Ed	Nonreimbursable	Total	Regular	Vocational	Special Ed	Nonreimbursable	Total
U46 ELGIN	21,200.32	2,061,269	0	1,912,868	479,193	4,453,330	8,788,292	0	7,991,918	2,002,205	18,782,415
101 BATAVIA	3,542.31	320,523	20,864	317,759	42,602	701,748	1,148,969	74,800	1,052,154	152,207	2,428,130
129 AURORA WEST	4,980.06	582,672	0	756,118	129,871	1,468,661	1,964,437	0	3,292,446	563,464	5,820,347
131 AURORA EAST	0.00	0	0	745,859	100,713	846,572	0	0	2,374,199	292,087	2,666,286
300 DUNDEE	15,686.00	1,077,737	0	959,601	518,939	2,556,277	4,501,913	0	4,279,246	2,533,038	11,314,197
301 CENTRAL	2,570.22	353,864	12,067	196,944	25,288	588,163	1,113,535	38,048	624,066	111,880	1,887,529
302 KANELAND	4,021.95	559,083	0	291,870	24,073	875,026	1,685,861	0	836,744	70,919	2,593,524
303 ST CHARLES	10,003.42	1,002,562	47,344	41,427	99,304	1,190,637	3,352,785	149,677	1,813,074	313,944	5,629,480
304 GENEVA	5,088.00	373,254	22,400	279,640	2,090	677,384	2,424,524	51,297	640,386	11,785	3,127,992
TOTAL 2005-2006	67,092.28	6,330,964	102,675	5,502,086	1,422,073	13,357,798	24,980,316	313,822	22,904,233	6,051,529	54,249,900

Classroom Buildings in Use – 7/01/05 – 6/30/06

CLASSROOM BUILDINGS IN USE - 7/1/04 - 6/30/05

DISTRICT	Elementary School		Middle or Junior High School		Senior High School		Mobile Classroom		Other, Special Ed, Voc Ed, Etc.	
	FY06	FY05	FY06	FY05	FY06	FY05	FY06	FY05	FY06	FY05
U46 ELGIN	40	40	8	8	4	4	40	35	4	2
101 BATAVIA	6	6	1	1	1	1	0	0	0	0
129 AURORA WEST	11	11	4	3	1	1	0	4	2	2
131 AURORA EAST	12	12	3	3	1	1	0	0	1	1
300 DUNDEE	13	13	5	3	3	2	32	1	2	4
301 CENTRAL	3	3	1	1	1	1	3	3	0	0
302 KANELAND	4	3	1	1	1	1	11	8	1	1
303 ST CHARLES	12	12	3	3	2	2	5	5	1	1
304 GENEVA	5	5	1	1	1	1	1	1	1	1
TOTAL	106	105	27	24	15	14	92	57	12	12

Assessed Valuation Per ADA – School Property – Bonded Indebtedness

FINANCE REPORT ASSESSSED VALUATION PER ADA - SCHOOL PROPERTY - BONDED INDEBTEDNESS

DISTRICT	ASSESSSED VALUATION FY2005	ASSESSSED VALUATION PER FY05 ADA	TOTAL SCHOOL TAX RATE	ORIGINAL COST	BONDED	BONDED	PCT CHG	% OF BONDING POWER USED
				OF PROPERTY & EQUIPMENT AS OF 6-30-05	INDEBTEDNESS AS OF 6-30-05	INDEBTEDNESS AS OF 6-30-06		AS OF 6-30-06
U46 ELGIN	4,697,014,591	134,940	4.7319%	405,149,664	668,795,935	380,083,840	-43.2%	103.2%
101 BATAVIA	1,097,194,319	193,606	4.2267%	91,413,652	49,595,000	46,610,000	-6.0%	32.8%
129 AURORA WEST	1,525,218,637	143,011	3.1434%	148,248,015	128,825,000	127,730,000	-0.8%	61.2%
131 AURORA EAST	757,668,827	73,743	2.9318%	125,461,837	76,491,245	82,115,814	7.4%	73.2%
300 DUNDEE	2,945,486,154	181,102	4.2224%	193,021,890	136,956,384	167,040,725	22.0%	33.7%
301 CENTRAL	433,977,193	191,037	4.9304%	44,200,681	23,262,936	56,643,091	143.5%	38.8%
302 KANELAND	643,578,005	200,251	4.4079%	104,270,528	61,326,825	59,301,360	-3.3%	69.1%
303 ST CHARLES	2,804,051,655	234,963	3.7845%	232,962,409	167,455,000	178,400,000	6.5%	43.3%
304 GENEVA	1,165,665,985	224,583	4.2035%	108,385,475	117,085,855	111,766,863	-4.5%	72.8%
TOTAL FY2006	16,069,855,366	160,236	---	1,453,114,151	1,429,794,180	1,209,691,693	-15.4%	64.5%
TOTOAL FY2005	14,531,228,055	146,790	---	1,508,395,145	---	---	30.6%	54.6%
TOTAL FY2004	13,280,610,126	131,772	---	1,408,405,075	---	---	3.0%	58.0%
TOTAL FY2003	11,904,908,410	122,076	---	1,229,590,967	---	---	5.4%	61.4%
TOTAL FY2002	10,613,770,215	112,429	---	1,117,378,053	---	---	38.9%	58.0%
TOTAL FY2001	9,694,835,730	108,192	---	976,949,384	---	---	1.631	0.467

FY 2006 Life Safety

FY 2006 LIFE SAFETY

#	DISTRICTS	TOTAL SITES	FY2006 NOTATIONS	AVERAGE SITES	FY2005 NOTATIONS	CHANGE 2005 TO 2006
U46	ELGIN	58	902	15.55	1592	(690)
101	BATAVIA	8	153	19.13	264	(111)
129	AURORA WEST	19	468	24.63	545	(77)
131	AURORA EAST	19	463	24.37	632	(169)
300	DUNDEE	24	707	29.46	1098	(391)
301	BURLINGTON	5	102	20.40	170	(68)
302	KANELAND	7	253	36.14	229	24
303	ST. CHARLES	18	372	20.67	588	(216)
304	GENEVA	8	197	24.63	177	20
TOTALS		166	3617	21.79	5295	(1678)

FY 2006 Construction and Occupancy Permits

FY 2006 CONSTRUCTION AND OCCUPANCY PERMITS

#	DISTRICT	NEW SITES	REPAIRS RENOVATION	ADDITIONS	TOTAL REQUESTED	APPROVED OCCUPANCY
U46	ELGIN	0	28	0	28	28
101	BATAVIA	0	10	0	10	0
129	AURORA WEST	0	13	0	13	13
131	AURORA EAST	2	7	4	13	8
300	DUNDEE	2	3	2	7	1
301	BURLINGTON	2	2	3	7	4
302	KANELAND	0	1	0	1	0
303	ST. CHARLES	0	0	0	0	0
304	GENEVA	0	9	2	11	12
TOTAL		6	73	11	90	66

Certified Personnel – 7/01/05 - 6/30/06

DEGREES - SALARIES - EXPERIENCE - STAFF/STUDENT RATIOS								
DISTRICT	TOTAL	DOCTORS & ED SPEC/CAS DEGREE	MASTERS DEGREE	BACHELORS DEGREE	TEACHERS AIDES (INCLUDE PART TIME)	AVG. SAL. FULL-TIME CERTIFIED TEACHERS	% of TRS	AVG. SAL. CERTIFIED ADMIN
	CERTIFIED (INCLUDE PART TIME)							
U46 ELGIN	2603	44	1664	895	481	\$50,098	9%	\$90,576
101 BATAVIA	424	10	269	145	73	\$60,604	0%	\$106,627
129 AURORA WEST	1237	6	528	703	213	\$51,297	9%	\$71,329
131 AURORA EAST	1130	14	395	721	161	\$45,000	0%	\$88,844
300 DUNDEE	1122	29	767	326	346	\$53,524	9%	\$94,925
301 CENTRAL	213	8	123	82	28	\$54,734	9%	\$96,678
302 KANELAND	318	4	185	129	30	\$51,198	0%	\$87,936
303 ST CHARLES	961	27	616	318	222	\$50,217	8%	\$91,948
304 GENEVA	411	17	293	101	118	\$59,142	1%	\$101,652
% = TRS AMOUNT PAID BY DISTRICT						# TRS PAYMENT VARIES		
TOTAL FY2006	8419	159	4840	3420	1672	\$52,868		\$92,279
		1.89%	57.49%	40.62%	19.86%			
TOTAL FY2005	7846	163	4756	2927	1650	\$50,667		\$86,742
		2.08%	60.62%	37.31%	21.03%			
DISTRICT	AVG. YRS. EXPERIENCE TEACHING IN ILLINOIS	ENROLLMENT PER CERTIFIED STAFF MEMBER FY2006	ENROLLMENT PER CERTIFIED STAFF MEMBER FY2005	TEACHER TO ADMINISTRATIVE STAFF RATIO	TEACHER TO SUPPORT STAFF RATIO	ENROLLMENT TO SUPPORT STAFF RATIO	ENROLLMENT PER FALL HOUSING RPT FY2006	
U46 ELGIN	12.0	15.7	16.2	16.5	1,929	21.2	40,900	
101 BATAVIA	11.0	14.5	14.2	17.7	90	68.4	6,154	
129 AURORA WEST	9.5	9.8	14.7	16.9	272	44.6	12,130	
131 AURORA EAST	12.9	10.4	10.2	23.1	186	63.4	11,786	
300 DUNDEE	10.6	16.3	16.3	20.0	499	36.6	18,262	
301 CENTRAL	12.0	11.4	13	17.8	133	18.3	2,436	
302 KANELAND	10.3	11.4	12.8	15.1	163	22.2	3,616	
303 ST CHARLES	11.8	13.9	12.9	14.3	379	35.3	13,380	
304 GENEVA	11.7	13.8	14.3	18.7	247	23.0	5,680	
Average	11.3	13.0	13.8	17.8	3,898	37.0	114,344	
PRIOR YEAR	12.1	13.8	13.5	15.9	3,851	29.2	112,420	

School Enrollment – 7/01/05 – 6/30/06

FY06 Enrollment Enrollment - Public Schools - September 2005

District	School	FY05	Total	Pre-K	K-5	6-8	9-12
U46	Elgin	38,976	40,900	1,016	19,771	9,157	10,956
101	Batavia	6,154	6,235	47	2,885	1,446	1,857
129	West Aurora	12,130	12,491	416	5,818	2,923	3,334
131	East Aurora	11,786	12,316	368	6,666	2,565	2,717
300	Dundee	18,262	18,670	464	8,574	4,271	5,361
301	Central	2,436	2,594	25	1,096	640	833
302	Kaneland	3,616	3,994	41	2,048	880	1,025
303	St. Charles	13,380	13,501	103	6,109	3,193	4,096
304	Geneva	5,680	5,814	66	2,576	1,378	1,794
TOTAL FY06			116,515	2,546	55,543	26,453	31,973
TOTAL FY05			112,420	2,169	53,561	26,006	30,684

ISBE Federal and State Revenue

ISBE FEDERAL & STATE REVENUE FISCAL YEAR ENDING JUNE 30, 2006

	STATE AID	STATE - OTHER	FEDERAL	TOTAL	\$ PER ADA
U46 ELGIN	69,525,159	33,516,747	17,690,036	120,731,942	3,469
101 BATAVIA	4,101,730	4,407,470	2,758,593	11,267,793	1,988
129 AURORA WEST	22,395,278	11,346,512	6,776,380	40,518,170	3,799
131 AURORA EAST	40,540,760	10,523,976	9,051,018	60,115,754	5,851
300 DUNDEE	23,032,683	12,529,388	7,371,245	42,933,316	2,640
301 CENTRAL	1,143,947	1,974,087	86,155	3,204,189	1,410
302 KANELAND	4,106,932	2,864,826	169,072	7,140,830	2,222
303 ST CHARLES	4,211,199	7,353,886	990,065	12,555,150	1,052
304 GENEVA	1,984,418	3,428,442	138,648	5,551,508	1,070
TOTAL FY2006	171,042,106	87,945,334	45,031,212	304,018,652	3,031
TOTAL FY2005	161,842,093	85,467,050	47,760,606	295,069,749	2,981
CHANGE	5.4%	2.8%	-6.1%	2.9%	1.7%

****Additional Financial and District information may be obtained at www.isbe.net.**

Kane County Regional Board of Trustees

The Regional Board of School Trustees is an elected body with the sole responsibility of action on detachment/annexation petitions regarding boundary changes between school districts in the region. The board meets on the first Monday of January, April, July and October. Meetings may be canceled due to lack of agenda items. Dr. Clem Mejia, Regional Superintendent, is the ex-officio Secretary for the Board of Trustees. The members of the Regional Board of School Trustees are:

	<u>Term Expires</u>		<u>Term Expires</u>
Kay Clancy St. Charles Township	2007	Lyle Oncken Sugar Grove Township	2007
Dave Henderson Dundee Township	2007	G. Michael Stoffa Blackberry Township	2011
James Murphy Aurora Township	2007 (Unexpired 2009)	Penny Wegman Elgin Township	2011
		Jon Zahm Virgil Township	2009

Kane County ROE FY06 Annual Report Index

Administrators' Academy	10	Learning Technology Center	13
Assessed Valuation	15	Legal Reference	5
Budget - County Portion	5	Legislative Development	3
Buildings in Use.....	16	Life Safety.....	16
Career Awareness	10	Middle School Endorsement.....	11
Career Cruising	10	Networks.....	14
Certified Personnel.....	17	Organization Chart.....	4
Cohorts.....	8	PBIS	8
Dropout Intervention.....	7	Permits	16
Duties of Regional Staff.....	5	Professional Development	11
Educational Service Region.....	3	Reading First.....	9
Educator of the Year	6	Regional Board of Trustees	19
Gang Task Force	11	RESPRO	9
GED	7	Revenue.....	18
Gifted Education	9	Safe Schools.....	9
Government Computer Courses.....	13	School Enrollment	18
Home Schooling.....	7	School Safety	7
Homeless Education.....	9	Superintendents.....	3
Institute Fund	6	Technical Assistance.....	13
Juvenile Justice Center.....	7	Transportation Analysis	14
KCHRC.....	10	Visual Media Coop	7
Learning Technology	13	Youth Outreach.....	8