



# **KANE COUNTY REGIONAL OFFICE OF EDUCATION**

## **2006-2007 ANNUAL REPORT**



---

# KANE COUNTY REGIONAL OFFICE OF EDUCATION

**DOUGLAS E. JOHNSON**  
*Regional Superintendent*  
**HARRISON SCHNEIDER**  
*Associate Superintendent*



**210 S. Sixth Street**  
**Geneva, IL 60134**  
**Phone: 630/232-5955**  
**Fax: 630/208-5115**  
**[www.kaneroe.org](http://www.kaneroe.org)**

September 24, 2007

## **Regional Office of Education releases Fiscal Year 2007 Annual Report**

Douglas E. Johnson took office as the Kane County Regional Superintendent of Schools on July 1, 2007, succeeding Dr. Clem Mejia who held the office for 16 years. It is with great respect and pride that Douglas Johnson releases this report on behalf of the previous administration.

Mr. Johnson is well acquainted with the Regional Office of Education where he has worked for the past 12 years, most recently as Assistant Superintendent. He has worked with a support staff and team of professional experts to provide staff development, training, graduate courses, consulting services, planning and facilitation services and technical assistance to schools and other education agencies.

Douglas believes being an educator is more than a profession, it is a calling. "Parents have entrusted us with their most precious gift, their children. This is a tremendous responsibility. We must dedicate ourselves as educators to ensure our schools are safe and nurturing places of learning where all people, young and old alike, are valued and respected."

This Annual Report is designed in part to meet the provisions of Chapter 105, Article 3, Section 5/3-6 and Section 5/3-15.8 of the School Code of Illinois. The report of schools visited and activities provided as required by Section 5/3-5 is provided quarterly to the Public Service Committee of the Kane County Board. In addition, as established in Chapter 105, Article 2, Section 5/2-3.62 in the School Code of Illinois, the Regional Office of Education shall provide services to support administrators and teachers in the planning, implementation, and evaluation of education for gifted children, computer technology education, mathematics, science, and reading. The Regional Office of Education may provide training, technical assistance, coordination and planning in other program areas such as school improvement, career guidance, alcohol/drug education and prevention, and alternative education.

Should you have any questions, please contact Douglas Johnson for further information.

---

**TABLE OF CONTENTS**

<b>Legislative Development of the Office.....</b>	<b>3</b>
<b>Organization Chart.....</b>	<b>4</b>
<b>Legal Reference for Annual Report .....</b>	<b>5</b>
<b>Representative Activities and Duties of the Regional Staff.....</b>	<b>5</b>
<b>Budget----County Portion Only.....</b>	<b>5</b>
<b>Institute Fund Report.....</b>	<b>6</b>
<b>Kane County Educator of the Year Awards .....</b>	<b>6</b>
<b>School Safety and Security .....</b>	<b>7</b>
<b>Juvenile Justice Center.....</b>	<b>7</b>
<b>General Educational Development (G.E.D.) .....</b>	<b>7</b>
<b>Home-Schooling .....</b>	<b>7</b>
<b>Dropout Intervention Project .....</b>	<b>7</b>
<b>Positive Behavior Interventions and Support .....</b>	<b>7</b>
<b>Masters/Doctorate &amp; Counselor’s Cohort.....</b>	<b>8</b>
<b>Kane County Youth Outreach Program.....</b>	<b>8</b>
<b>Regional Safe Schools Program.....</b>	<b>9</b>
<b>System of Support, RESPRO Area 1-C .....</b>	<b>9</b>
<b>Area One Homeless Education Program.....</b>	<b>9</b>
<b>Gifted Education .....</b>	<b>9</b>
<b>Networks .....</b>	<b>9</b>
<b>Illinois Administrators’ Academy .....</b>	<b>10</b>
<b>Kane County Human Resources Consortium (KCHRC).....</b>	<b>10</b>
<b>Career Awareness &amp; Development &amp; ETC.....</b>	<b>10</b>
<b>Career Cruising.....</b>	<b>10</b>
<b>Sixteenth Circuit Court Gang Task Force.....</b>	<b>11</b>
<b>Middle School Endorsement Program.....</b>	<b>11</b>
<b>Professional Development .....</b>	<b>11</b>
<b>Technical Assistance to Schools.....</b>	<b>13</b>
<b>Learning Technology Services.....</b>	<b>13</b>
<b>Area One West Learning Technology Center .....</b>	<b>13</b>
<b>Fingerprinting .....</b>	<b>14</b>
<b>GIS (Geographic Information System).....</b>	<b>14</b>
<b>National Institute For School Leadership.....</b>	<b>14</b>
<b>Kane County Regional Board of Trustees .....</b>	<b>14</b>
<b>District Transportation Analysis .....</b>	<b>15</b>
<b>Classroom Buildings in Use – 7/01/06 – 6/30/07 .....</b>	<b>15</b>
<b>Assessed Valuation Per ADA – School Property – Bonded Indebtedness.....</b>	<b>16</b>
<b>FY 2007 Life Safety.....</b>	<b>17</b>
<b>FY 2007 Construction and Occupancy Permits.....</b>	<b>17</b>
<b>Certified Personnel – 7/01/06 - 6/30/07.....</b>	<b>18</b>
<b>School Enrollment – 7/01/06 – 6/30/07 .....</b>	<b>19</b>
<b>ISBE Federal and State Revenue.....</b>	<b>19</b>

---

## Legislative Development of the Office

1829	The sixth General Assembly mandated appointment of a Commissioner of School Lands.
1841	Title changed to County Commissioner and Ex-Officio County Superintendent of Schools.
1865	Legislature called for the election of the County Superintendent of Schools.
1973	Consolidation of smaller counties resulted in 78 regions.
1975	Title of Chief Administrative Officer of an education service region changed to Regional Superintendent of Schools.
1977	Further consolidation resulted in 57 regions in Illinois.
1993	Educational Service Region office renamed Regional Office of Education.
1995	Further consolidation resulted in 45 regions, each with a population of at least 45,000 inhabitants.

## Regional Superintendents of Schools

R.B. "Bink" Mades	Prior to 1975
James L. Hanson	1975 – 1987
Dr. Douglas L. Hoefl	1987 – 1992
Dr. Clem Mejia	1993 – 2007
Douglas E. Johnson	Took Office July 1, 2007 - Present

## Superintendent of Educational Service Region

The act of Congress which admitted Illinois to the Union in 1818 set aside the sixteenth section of every township for the use of schools. In 1819, therefore, the General Assembly directed the county commissioners' court in each county to appoint three trustees from each township. These trustees, whose terms ran for four years, were charged with hiring a surveyor, laying out section 16 into lots, leasing those lots for no more than a ten year period, and appointing a clerk and treasurer to handle the leases. In 1827 this was modified to give the trustees responsibility for laying out school districts within the township. These districts were to contain no fewer than 18 scholars, and the trustees were to hire a teacher for the district.

The situation changed in 1829, when Congress agreed to permit the sale of section 16 lands. For the first time, the county commissioners' court could appoint a commissioner and agent for the county school lands. This position was the predecessor of the Regional Superintendent of Schools. The commissioner was required to prepare a record of the school lands in the county. When nine-tenths of the voters in any township decided to sell their school lands, they were required to petition the commissioner in writing. In turn, he arranged the sale, and loaned the money from the sale back to the township.

During the 1830's, minor changes were made in the school law. The percentage of voters required to sign a petition for sale of school lands was reduced and the county commissioners' court again appointed township school trustees. Most important, in 1837 the citizens of a township were given the choice of incorporating for the purpose of establishing and supporting common schools. The trustees were assigned the superintendence of the township schools, and they could appoint a clerk, who would also act as treasurer.

The school land commissioner was required to pay to this treasurer all of the money in his care which belonged to the township, and would deliver to him all bonds, notes, and mortgages. The township treasurer made an abstract, in return, which showed the name of each teacher, the number of scholars at each school, and the total number of days taught. The treasurer was to deliver this abstract to the school land commissioner and receive the interest due the township from the state's school, college, and seminary lands.

In 1841, the office of school commissioner became elective, for a term of two years. This same year, each school district was required to elect a board of three school directors, also for two-year terms. The school directors were empowered to select building sites, build schools, employ teachers, and visit the district schools. In townships which had not chosen to incorporate, the trustees of school lands could appoint school directors if none were elected.

The school law was under continual revision during the 1840's, and in 1845 the school commissioner was made *ex officio* county superintendent of the common schools. His duties included visiting the schools, examining teachers, and issuing certificates. By 1865, each county elected a superintendent of schools every four years. Township school trustees reported to this superintendent on the number of schools, the number of scholars, the number of male and female teachers, the compensation of teachers, the number of persons under age 21 in the township, the principal and interest of the township fund, the amount of the common school fund received by the treasurer, the amount raised by taxation, all other receipts and expenditures, and any other information required by the superintendent.

The primary duties of the present superintendent of an educational service region remain much the same as they were in the nineteenth century. The superintendent conducts teachers' institutes, handles the school lands, visits the schools, examines the accounts of all school treasurers in the county, and distributes state money for education to the school districts in his charge.

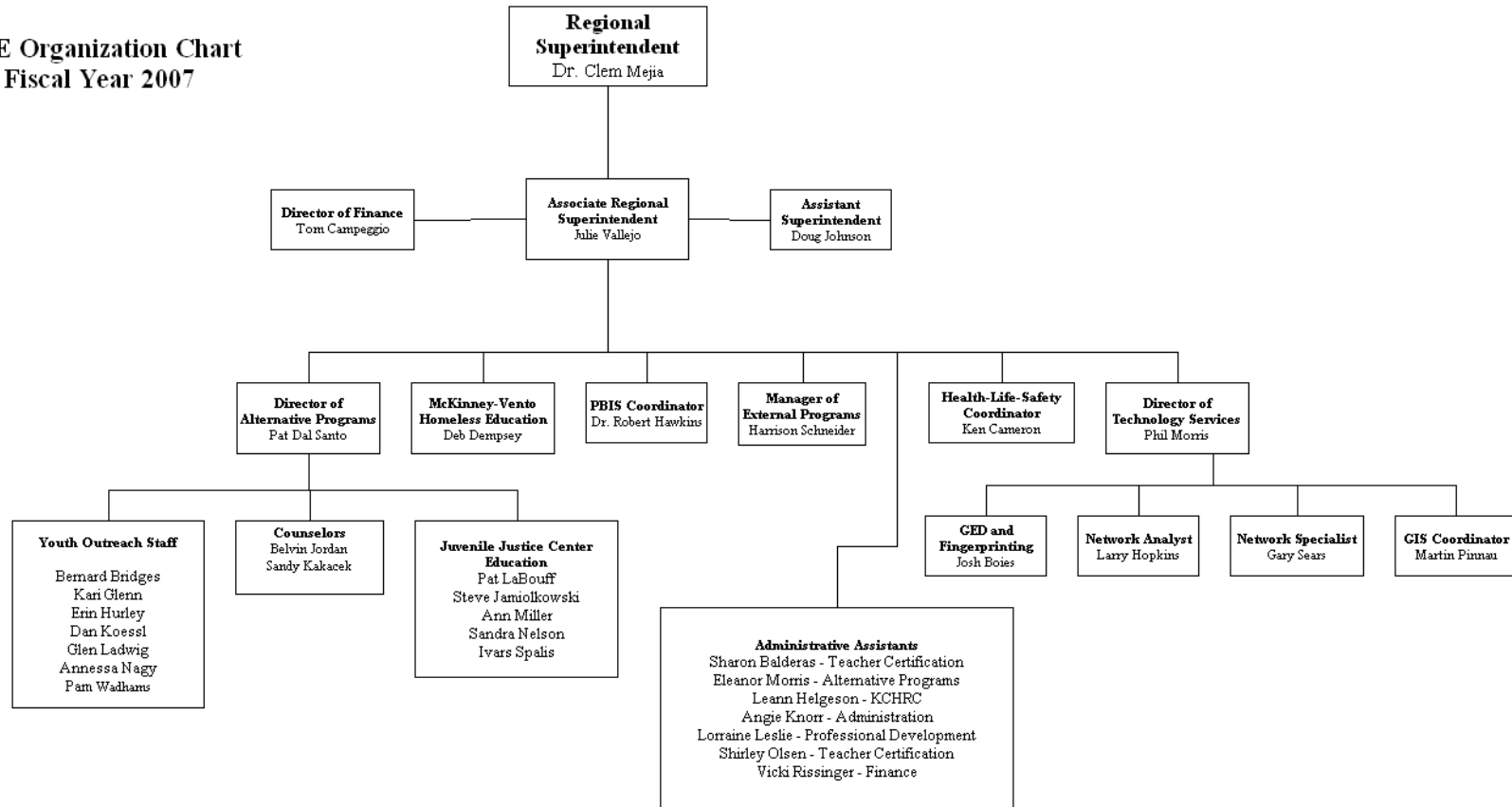
---

# Kane County Regional Office of Education Organization Chart

*Our Mission is to provide leadership in the learning community by:*

- *Developing Educational Resources*
- *Facilitating Learning*
- *Collaborating with all Educational Partners*

**ROE Organization Chart  
Fiscal Year 2007**



## Legal Reference for Annual Report

This Annual Report is designed in part to meet the provisions of Chapter 105, Article 3, Section 5/3-6 and Section 5/3-15.8 of the School Code of Illinois. The report of schools visited and meetings attended as required by Section 5/3-5 is provided quarterly to the Public Service Committee of the Kane County Board. In addition, as established in Chapter 105, Article 2, Section 5/2-3.62 in the School Code of Illinois, the Regional Office of Education shall provide services to support administrators and teachers in the planning, implementation, and evaluation of education for gifted children, computer technology education, mathematics, science, and reading. The Regional Office of Education may provide training, technical assistance; coordination and planning in other program areas such as school improvement, career guidance, alcohol/drug education and prevention, and alternative education.

## Representative Activities and Duties of the Regional Staff

Processed approximately 1,725 new applications for teaching certificates and registered over 5,996 certificates.

Visited each of the 169 public school buildings in the Region to monitor life/safety requirements.

Appointed instructors for school bus driver classes, held 11 initial bus training classes for 286 new drivers and 40 bus refresher classes for 1,127 drivers.

Distributed information on bus safety by meeting with School District Transportation Directors.

Assisted the State Board of Education during its recognition visits of Kane County School Districts. Provided school officials and the general public with information regarding area school districts and the School Code of Illinois.

Reviewed and approved, or returned for correction, a multitude of State Board of Education reports and applications filed by local school districts.

Regional Superintendent Mejia served on the following committees: Kane County Child Advocacy Board; Kane County Workforce Development Board; Illinois Association of Regional School Superintendents; Past President for Illinois Association of County Officials; Association for Individual Development Board.

Associate Superintendent Vallejo served on the following committees: Council for Exceptional Children; Illinois Association of Regional School Superintendents; Northern Illinois Superintendents' Roundtable; Kane County Safe Schools Committee; Northern Illinois Chapter of Phi Delta Kappa and the State Scholarship Committee.

## Budget-----County Portion Only

Funds for the operation of the Kane County Regional Office of Education are provided by Kane County. This does not include salaries for the Regional Superintendent and the Associate Regional Superintendent, both of whom are paid by the State of Illinois. Nor does it include wages and operating expenses of the Professional Development Services Division which is funded by the Illinois State Board of Education. The following budget and expenditure figures are based on the County's fiscal year, which runs from December 1<sup>st</sup> through November 30<sup>th</sup>.

### KANE COUNTY BUDGET

	<b><u>FY04</u></b> <b>Budget</b>	<b><u>FY-05</u></b> <b>Budget</b>	<b><u>FY06</u></b> <b>Budget</b>	<b><u>FY07</u></b> <b>Budget</b>
Salaries	226,419	230,948	230,948	237,876
Operations & Other	19,485	19,485	19,485	18,885
Discretionary Total	245,904	250,433	250,433	256,761
Health & Dental	75,444	68,775	68,775	61,243
<b>TOTAL</b>	<b>321,348</b>	<b>319,208</b>	<b>319,208</b>	<b>318,004</b>

## Institute Fund Report

### INSTITUTE FUND FINANCIAL REPORT JULY 1, 2006 THRU JUNE 30, 2007

**BEGINNING FUND BALANCE, JULY 1, 2006** **531,187.90**

#### RECEIPTS

1 YR REGISTRATIONS	4,932.00	
MULTI-YEAR REGISTRATIONS	114,250.00	
REGISTRATION RENEWALS-PAST YEAR	538.00	
DUPLICATE CERTIFICATES	532.00	
TEACHER CERT APPLICATION	50,218.00	
DUE TO ISBE-TEACHER CERT APPL	(52,906.00)	
INTEREST	23,148.13	
EDUCATOR OF THE YEAR	15,300.00	
REFUNDS & ADJUSTMENTS	(454.00)	
<b>TOTAL RECEIPTS</b>		<b>155,558.13</b>

#### DISBURSEMENTS

OTHER PURCHASED SERVICES	66,417.61	
TRAVEL	188.70	
DUES & FEES	250.00	
EDUCATOR OF THE YEAR	47,423.79	
SPELLING BEE	2,250.00	
PROFESSIONAL & TECHNICAL SERVICES	15,906.12	
MINI-GRANTS	99,070.00	
<b>TOTAL DISBURSEMENTS</b>		<b>231,506.22</b>

**ENDING FUND BALANCE, JUNE 30, 2007** **455,239.81**

## Kane County Educator of the Year Awards

The 32<sup>nd</sup> Annual Educator of the Year Awards Dinner was held at the Pheasant Run Resort Mega Center on May 18, 2007. The dinner honored 32 distinguished educators with plaques of recognition. Those who received awards of distinction were:

Award Given	Name	District
Educator of the Year	Donna Lynn Letzter	District 129
Regional Superintendent Award	Dr. Deedee Slagle	District 304
R. B. Mades Associate Educator of the Year	Wilma Van Arragon	District 303
Julie Vallejo Elementary Educator of the Year	Karen Lynn Weigt	District 302
J.L. Hanson Middle School Educator of the Year	Lynn Pittner	District 303
D.L. Hoeft High School Educator of the Year	Kim Gavigan	District 300
Clem Mejia Administrator of the Year	Dr. Jon Tuin	District U46
Support Staff Award	Pam Burgeson	District 304

## School Safety and Security

In the past several years school security and student safety have become major concerns across the nation as well as in Illinois. The Kane County ROE has sponsored numerous related programs that have involved all nine school districts within its jurisdiction. Collaborative program planning continues in this important area, especially in conjunction with the 16<sup>th</sup> Circuit Court Gang Task Force.

- Gangs-Understanding The Why & Hip Hop Generations
- Multi-Hazard Emergency Planning for Illinois Schools – Creating an Action Plan
- PBIS (Positive Behavioral Interventions and Supports)
- How To Cope With A Bully (Gum In My Hair)

Participants: More than 125 participants

## Juvenile Justice Center

The educational program at the Juvenile Justice Center is administered by the Kane County Regional Office of Education. An intergovernmental agreement between the Regional Office of Education, St. Charles School District, and the Chief Judge assures that the Regional Office of Education is responsible for the educational program for the students at the Juvenile Justice Center. The teachers provide daily instruction to meet the educational needs of the students in a continuous learning calendar. During this year, 805 students received educational services from the Juvenile Justice Center teachers. A reintegration specialist serves as a liaison between the center and the students' home school to assure a smooth transition into the regular academic program.

## General Educational Development (G.E.D.)

The Regional Superintendent is delegated with the responsibility of administering the G.E.D. testing program in accordance with the Illinois School Code. This program allows those who are 18 years of age, whose high school class has graduated and have been out of the school system for one year to secure a High School Equivalency Certificate upon completion and passing all tests.

Testing centers have been established in Kane County at the Regional Office of Education in Geneva and Elgin Community College in Elgin. Tests are administered on Saturdays and require at least 3 Saturdays to complete the battery. The Kane County Regional Office of Education has become an official scoring center and has installed equipment for scanning and scoring all tests except the essay portion.

A \$35.00 fee is charged to cover the cost of tests, administration of tests, grading, and for the certificate.

	<u>7/01/06--6/30/07</u>
GED Registrations	1,097
Retests	779
Tests Passed	483
Transcripts Processed	690

## Home-Schooling

The Regional Office of Education serves as a resource to those parents who are interested in home-schooling their children. Information is shared with the parents to assist them. A request is made for parents to register with the regional office as a home-schooling parent and assure that education is being provided to their children. There are no fees collected for resource information.

## Dropout Intervention Project

The 2006-2007 school year marked the 19<sup>th</sup> year of this project. The goal of the Dropout Intervention Project is to bring "disconnected" youth from 17-21 years of age back into the mainstream of society. As of June 2007, the Project enrolled 71 students in the GED Program. Three hundred thirty-three students were provided dropout interventions.

## Positive Behavior Interventions and Support

The 2006-2007 school year marked the 6<sup>th</sup> year of the PBIS project. This program serves public, private, and residential schools in the regions served by the Kane County ROE. PBIS leads school teams in elementary, middle and senior high schools through a three-to-five year implementation process that enhances the positive behavior and social skills development of all students in support of more effective teaching and learning environments. As of June 30, 2007, fifty-one schools in the Kane County ROE region serving over 30,000 students are providing positive behavior support through the PBIS process. Two hundred and ninety-nine educators have attended the PBIS trainings and Administrator Academies offered by the ROE. In addition, forty individuals received advanced training in Kane County on the School-wide Information System (SWIS) web-based student behavior management data system that is used in PBIS schools throughout the United States, Canada, and other countries worldwide to manage their student discipline data.



## Masters/Doctorate & Counselor's Cohort

Aurora University and the Regional Office of Education have collaborated to develop and provide a Masters Degree program for the teachers in Kane County. The teachers may receive their degree through a program of Masters in Teaching or Masters in Educational Leadership. Approximately 1,752 teachers have participated in this program. Aurora University and the Regional Office of Education have collaborated to develop and provide a Doctorate Degree Program. The individuals may receive their degree through a program of Doctorate in Educational Administration or Doctorate in Curriculum.

## Kane County Youth Outreach Program

In 2006-2007 we completed the 22nd year of the Kane County Truancy Prevention Program and continued the 19<sup>th</sup> year of the Kane County Dropout Intervention Project.

Kane County had 1,654 "official" referrals from our local schools requesting truancy assistance from our staff. The services provided during the 2006-2007 year were the following:

<u>SERVICES</u>	<u>2006-2007</u>	<u>2005-2006</u>
School Visits	3,015	3,651
Home Visits	956	1,238
Student Contacts	2,625	3,550
Community Agency Contacts	460	832
School Conferences	483	523
Regional Conferences	15	57
Classroom Prevention Presentations	19*	25
Retrieved Dropouts to GED Program	71	85
Juvenile Court Cases	27	36
Adult Court Cases	11	12

(\*1,233 served)

Funding: \$319,283

<u>SOURCE OF REFERRALS</u>	<u>2006-2007</u>	<u>2005-2006</u>
<u>By District</u>		
U46 Elgin	410	413
101 Batavia	33	15
129 West Aurora	335	344
131 East Aurora	554	463
300 Dundee/Carpentersville	230	237
301 Central	1	4
302 Kaneland	4	2
303 St. Charles	78	64
304 Geneva	4	8
Other	5	11
<u>By Grade Level</u>		
Elementary K-5	720	610
Middle School	557	515
High School	377	388
Other	0	48
<u>By Gender</u>		
Males	837	790
Females	817	771
<b>TOTAL</b>	<b>1,654</b>	<b>1,561</b>

## Regional Safe Schools Program

The Regional Safe Schools Program (RSSP) began with a planning and implementation grant in school year 1996-1997. This program is a result of legislation providing programs for disruptive students who are eligible for suspension or expulsion. The legislature appropriated \$15 million for safe school programs. Regional Offices of Education wrote program grants to access this money. These funds are renewable on an annual basis and are used by Kane County to provide educational programs to disruptive students in a variety of ways. During the 2006 - 2007 school year, Districts U-46, 300, 129, 131, and Mid-Valley (Districts 101, 301, 302, 303, 304), operate alternative to expulsion programs. All the above programs are under the auspices of the Kane County Regional Office of Education.

In 2006 – 2007 approximately 215 students were served in the above programs. They were served at 5 different sites. All of these students were eligible for expulsion or had multiple suspensions. Instead they attended RSSP sites in their local districts. Eighty percent of these students completed the program successfully. Due to the RSSP, expulsions have been reduced by 63% in Kane County since the 1994-1995 school year.

## System of Support, RESPRO Area 1-C

The Kane County Regional Office Education's role in the system of support is to create a powerful and effective partnership between the System of Support schools and Regional System of Support Provider (RESPRO Area 1-C) to improve teaching and learning, student learning, and the learning community. Support and assistance was provided through direct training, on site support and technology integration for eligible individual schools and public school districts aligning with the goals articulated in the State's System of Support and No Child Left Behind guidelines.

Funding: \$1,016,253

## Area One Homeless Education Program

Homeless children and youth face numerous obstacles in obtaining an education. The goal of the Area One Homeless Education Program is to provide programs that will ensure the removal of barriers and provide for the enrollment, attendance and educational success of homeless children. This program focuses on schools and communities in Area One (Lake, McHenry, Suburban Cook, DuPage, Kendall, Grundy and Kane counties).

This program is administered by the Kane County Regional Office of Education and funded by the Illinois State Board of Education through the McKinney-Vento Education Assistance Act of 2001.

Funding: \$467,277.00

## Gifted Education

The Regional Office of Education provides support and training to enhance our districts' ability to meet the special needs of students in each respective district.

- ROE State Raising Student Achievement Conference \*
- Illinois Association for Gifted Children State Conference \*
- Kane County Gifted Services Network
- High School Gifted Pilot Project
- Level I & II Gifted Institute Training
- Genius Denied Seminar

Participants: 169                      Funding: \$13,200

\* Attendance at the two state conferences exceeded 1,200 participants.

## Networks

This system of educator networks is provided to showcase best practices in respective content areas, develop leadership for instructional improvement, solve instructional and assessment concerns, and promote the professional development of teachers in their content areas. Each network meets multiple times each year, depending on the professional needs of the participants and the goals of the respective network.

- Kane County Gifted Services Network
- Special Education Directors Network
- Learning Leaders Network
- Reading Leaders Network
- Technology Coordinators

Participants: 216                      Funding: \$2,400

## Illinois Administrators' Academy

Individuals employed in positions requiring a Type 75 certificate as a condition of employment (Illinois School Code Section 5/24A-3) are required to complete a minimum of one Illinois administrators' academy each year.

### Administrators' Academy offerings for 2006-2007:

Introduction to the Evaluation of Certified Staff (five sessions)  
 Local Assessments Aligned With State Standards  
 Training to Select and Develop Great Teachers – Introductory (two sessions)  
 Training to Select and Develop Teachers – Advanced Phase II (two sessions)  
 Training to Select and Develop Administrators, Phase I  
 Training to Select and Develop Administrators, Phase II  
 Utilization of On-Line Teacher Application Systems  
 A Framework For Understanding Poverty  
 Learning Structures  
 Supporting Reading Instruction Through Formative Supervision  
 Teacher Evaluation: Converging Perspectives  
 Focused Walk Evaluating Student Engagement in Schools  
 Curriculum Mapping to Raise Achievement  
 Legal Aspects of Student Records  
 Legal Issues in Special Education  
 Curriculum Modification for At-Risk and Exceptional Learners  
 Using Data to Ignite Student and Teacher High Performance  
 The Principal's Role in the Instructional Process

PBIS (Positive Behavioral Interventions & Supports) (three sessions)  
 Change - Who Moved My Cheese? (two sessions)  
 The 21 Indispensable Qualities of a Leader  
 Standards for the Principal/Administrator  
 The 17 Indisputable Laws of Teamwork  
 Multi-Hazard Emergency Planning for IL Schools-Creating an Action Plan  
 Data-Driven Decision-Making  
 Measures of Success: Evaluating the Effective use of Technology  
 The Digital Leader @School: Using Technology Successfully  
 Introduction of SMARTGoals  
 Training to Select & Develop Great Administrators – An Introduction  
 Developing the Leaders Around You  
 Curriculum Based Evaluations: Evaluating Teacher Performance on Best Practices in Math and Reading  
 Teacher Style Profile Training for KCHRC  
 Functions of the Middle School  
 Developmental Issues in Early Adolescent Education  
 The Best Kept Secret: Success through Careers in the Building Trades Industry

Funding: Self Sustaining

Participants: 1,175

## Kane County Human Resources Consortium (KCHRC)

The KCHRC continued to grow substantially in its fourth year. This on-line teacher application system has processed more than 27,000 applications resulting in the hiring of more than 2,100 staff members.

All nine Kane County public school districts contributed funds totaling \$48,000 to support the project. The KCHRC meets twice each month, the first time to deal with KCHRC business and the second for associated professional development.

The KCHRC has received significant notoriety around the state and nation resulting in many inquiries from like entities interested in the program here in Kane County.

Funding (including funding from participating districts): \$48,000+

Participants: 9 of 9 school districts

## Career Awareness & Development & ETC

The State-funded Career Awareness & Development grant was eliminated in 2003. Several collaborative initiatives of the Kane County ROE, VALEES, Northern Kane EFE, the nine Kane County public school districts, and the Illinois School Counselors Academy related to the grant continued to develop on a self-sustaining basis in 2006-2007.

- Illinois School Counselors' Academy programs
- Workshop In Counseling: Emphasizing Student Academic Success by Integrating Career Development

Funding: \$20,000 (all partners)

Participants: 90

## Career Cruising

Since May of 2000, the Kane County ROE, Northern Kane EFE, VALEES, and the Illinois School Counselors' Academy have collaborated in developing programs to better integrate career and technical education with the total school educational enterprise, grades K-14. The initial effort (COMET Project) included development of an electronic career portfolio for all students.

The cooperative partners identified the commercial product known as Career Cruising to meet the needs of the electronic portfolio goal. In 2006-2007 all the Kane County middle and high schools were provided Career Cruising site licenses in both the English and Spanish versions. Research indicates variable levels of implementation, but the variety and scope of program use assures that the project will continue.

Funding (all partners): \$16,000

Participants: 5,000 +

## Sixteenth Circuit Court Gang Task Force

The Kane County ROE is a representative member of the Sixteenth Circuit Gang Task Force as well as a professional development program partner. The most recent program entitled "Gangs-Understanding The Why & Hip Hop Generation" was held in Geneva, IL in May, 2007 for 138 participants.

## Middle School Endorsement Program

Based on expressed needs of many Kane County teachers for the opportunity to obtain the middle school endorsement to their teaching certificates, the Kane County Regional Office of Education sponsored the following courses in 2006-2007.

-Developmental Issues in Early Adolescent Education

These courses were offered on-line through Illinois State University.

Budget: Self Sustaining      Participants: 11

## Professional Development

The Regional Office of Education supports a wide variety of activities including institutes, workshops, conferences, networking, technical assistance, information dissemination, and consulting to meet the needs of our schools. These activities are designed to complement the other Kane County Regional Office of Education and district professional development programs. Our office collaborates with local, regional, and state educational partners representing both the public and private sector in creating learning opportunities for the entire Kane County Learning Community. Reading First and System of Support (RESPRO-Area 1) activities supported through No Child Left Behind (NCLB) federal funding are aligned with the goals articulated in the Illinois State Board of Education and the No Child Left Behind guidelines.

### *Learning Standards, ISAT, PSAE, Assessment*

Reading ISAT District Trainers Workshop  
 Rubric Workshops  
 Data Retreat  
 Local Assessments Aligned with State Standards  
 Curriculum Mapping to Raise Achievement  
 Using Data to Ignite Student and Teacher High Performance  
 Data-Driven Decision-Making  
 Measures of Success: Evaluating the Effective use of Technology  
 The Digital Leader @ School  
 Introduction of SMARTGoals  
 Curriculum Based Evaluations  
 ParaPro Assessment  
 ISAT Reading: Understanding, Planning, and Mastering the New  
 ISAT Extended Response

2<sup>nd</sup> Graders: Getting Them Ready for the ISAT  
 Excel I  
 Excel II  
 RESPRO Illinois Interactive Report Card Training  
 Data Analysis and the Reading First Coach Training  
 Data Collection and Organization  
 Problem Solving  
 English Language Proficiency Standards  
 Illinois Frameworks for Learning: Reading (3-8)  
 Illinois Frameworks for Learning: Math (3-8)  
 ISAT Reading Training  
 ISAT Writing Training  
 ISAT Math Training

### *Fundamental Learning Areas and Special Interest*

AgTech Tour for Teachers  
 FoxMap Workshop  
 Starlab Basic Training  
 FOXMap Focus New Tech. & New Plans for Action  
 IL Health Science Career Cluster Initiative K-6  
 Illinois Health Science Career Cluster Initiative Grades 7-8  
 Illinois Health Science Career Cluster Initiative Grades 9-12  
 The Hidden Culture of Aggression in Girls  
 Kane County Music Educators Conference  
 Movement and Learning  
 Trailside Teaching: Twenty ways to wow your students in the field!  
 Celebrate the Earth through Literature and Activities  
 AED, CPR, and Current First Aid Practices  
 CPR/AED Training for Nurses  
 All Aboard The Music Express  
 PhotoShop in the Classroom  
 SkillsTutor and New Explorations in Learning for Teachers  
 Mask Making  
 Differentiating Instruction for General Education Teachers  
 The Sweatshop  
 Sing, Play, Move, Create: Making Music More than General

Folk Dance as a Tool for Teaching Rhythm, Movement and Culture  
 West African Inspired Drumming  
 Differentiate Instruction for ESL Teachers  
 Differentiating Instruction in Math  
 Differentiating Instruction in Science  
 Introduction to Brain Gym @ Improvement Through Movement  
 Presentation Skills Dynamics: Sharpen Your Skills  
 Differentiating Instruction: Focus on English Language  
 Teaching Jazz and Improvisation in the Elementary/Middle School  
 Using Children's Literature to Teach about Mammals  
 Fox River Watershed Conference  
 United Streaming Training  
 Skillstutor Training  
 Illinois Frameworks for Learning: Reading (3-8)  
 Illinois Frameworks for Learning: Math (3-8)  
 Solving and Scoring Open-Ended Math Problems  
 Middle School Math Problem Solving  
 Career Cruising  
 Fox River Watershed Monitoring Network Orientation Workshop  
 A Day in a One-Room School  
 Inspiration  
 School Safety & Security: Strategies and Resources

### ***Educational Strategies and Initiatives***

RESPRO Restructuring Planning  
 Effective Teamwork Leadership Training-RESPRO SOS  
 Tools for Teaching  
 Cooperative Learning Workshop  
 Recognizing and Assisting Homeless Students in the Classroom  
 National Board Certification: What's It All About?  
 JUMPSTART ENTRY 4 (National Board Certification)  
 NBCT Cohort Candidate Support  
 NBPTS Candidate Support Sessions  
 Integrating Academic Success with Career Development  
 Self Assessment of Teaching  
 National Board Certification – Pre Candidacy Class  
 Functions of the Middle School  
 Developmental Issues in Early Adolescent Education  
 A Framework for Understanding Poverty  
 Learning Structures  
 Focused Walk Evaluating Student Engagement in Schools  
 The 17 Indisputable Laws of Teamwork  
 Multi-Hazard Emergency Planning for Illinois Schools-Creating an Action Plan  
 PBIS Universal Team Training  
 School Improvement Planning: Meeting Criteria for an ISBE Approved SIP  
 Change – Who Moved My Cheese?  
 Col. Grossman Safety Presentation  
 SkillsTutor and New Exploration  
 Maximizing SkillsTutor  
 Using UnitedStreaming Resources in Your Classroom  
 EBSCO

SWIS Training  
 Positive Behavior Intervention & Supports: Overview  
 SWIS Facilitator Training  
 Learning Structures  
 Stress and Time Management for Teachers  
 Keeping Schools Safe in a Day of Homeland Security  
 Service-Learning: Engaging Students in Learning K-12  
 Communication with Students, Parents, and Fellow Staff  
 Teaching with Pizzazz!  
 Application of Learning Structures through Elementary Classroom Strategies  
 Kindergarten / Early Childhood Conference  
 Highly Effective Questioning  
 Quantum Learning for Teachers  
 Literacy, Laughter, and Learning  
 Raising Achievement for the Secondary Student: What Can I do Tomorrow?  
 Creating a Website to Promote Student Learning To Increase Communication  
 Inspiration  
 United Streaming  
 The Seven Habits of Highly Effective People  
 ELL (English Language Learners) Workshop  
 ELL RESPRO Conference  
 CRISS Training  
 CRISS II Training  
 National Board Certification  
 No Child Left Behind Overview

### ***Special Education and School Support Services***

Legal Aspects of Student Records  
 Legal Issues in Special Education  
 Curriculum Modifications for At-Risk and Exceptional Learners  
 Assistive Technology for Students with Mild Disabilities  
 The Prevention and Treatment of Anger and Aggression in Children and Adolescents  
 The Basics of English Language Learners  
 Effective Inclusive Education's for Diverse Learners in the Classroom  
 Teaching ELL Students in the Mainstream High School Classroom  
 Taking Data to Demonstrate Efficacy in Special Education  
 Transition Outreach Training for Adult Living

Child and Adolescent Mental Health Issues  
 Language/Literacy Connection: Impact on Children with Communication Difficulties  
 Differentiating Instruction for Special Education Teachers  
 Understanding Court Services: Probation and Juvenile Detention  
 Incorporating Special Education with Music Education  
 Overview of Brain Structures-Neurological Impairments to Phonemic Fluency  
 Illinois Learning Standards & Special Education  
 CPR & Automated External Defibrillator Certification  
 PBIS Universal Team Training  
 Illinois School Counselors Academy

### ***Reading and Writing***

Reading First Academy (Grade K)  
 Reading First Academy (1<sup>st</sup> Grade)  
 Reading First Academy (2<sup>nd</sup> Grade)  
 Reading First Academy (3<sup>rd</sup> Grade)  
 Targeted Reading Conferencing  
 The Daily Five  
 Literacy Center Workshop K-3  
 Supporting Reading Instruction through Formative Supervision  
 Middle School Reading Comprehension  
 Bringing Boys and Books Together  
 A School-Wide Vocabulary Framework  
 Developing Dynamic Writing  
 Literacy & Learning: Help for Struggling Students  
 Literacy Centers & Guided Reading  
 Effective Reading Strategies for ELLs  
 Real Life Literacy/Reading Strategies  
 Using Informational Text Prof. Dev. & Classroom Resources  
 Children's Literature Workshop  
 Academic Vocabulary Reading and Writing Strategies  
 The Writing Block-Putting It All Together

Using Technology to Support Reading and Writing Skills  
 How to Keep Middle School Students Reading  
 CRISS Training  
 CRISS II Training  
 Reading First Coach Training  
 Targeted Reading Conferencing  
 Data Analysis and the Reading Coach Training  
 Project Connect; Skillstutor  
 Literacy Centers and Guided Reading Management  
 Identifying Best Practices in Reading for Administrators  
 Kane County Writing Project  
 DIBELS Training  
 TPRI Training  
 RF Coaches Toolbox Training  
 Reading First: Phonemic Awareness Implementation Support  
 Reading First: Phonics Implementation Support  
 Reading First: Fluency Implementation Support  
 Reading First: Vocabulary Development Implementation Support  
 Reading First: Comprehension Implementation Support

Participants: 7,888

Funding \$ 231,446

## Technical Assistance to Schools

Part of the responsibility of the Kane County Regional Office of Education is to provide technical assistance to schools and educators as they work to improve curriculum, instruction, and learning. This assistance includes presentations, facilitation, consulting, coaching, and training.

## Learning Technology Services

The Regional Office of Education provides support and training in many areas of technology. To determine the activities to provide, a needs assessment is given during the year to teachers and monthly technology coordinator meetings occur. Monthly Technology Coordinator meetings are used to communicate information from the Illinois State Board of Education, and also allow dialogue between districts.

Learning Technology Services also provides technical support within the Regional Office of Education to maintain connectivity to the Illinois State Board of Education electronic systems including Teacher Certification and Administrators' Academy. It also continues to support the Safe Schools programs within Kane County school districts and support the technology implementation at the Kane County Juvenile Justice Center (JJC).

For questions concerning this program, contact Phil Morris ([pmorris@kane.k12.il.us](mailto:pmorris@kane.k12.il.us)).

During this past year the following services have been provided for school districts:

- Hosting of 7 district and private school websites
- Online Registration for workshops with digital encryption
- Professional Development Library accessible from ROE website
- Maintain LiveScan Fingerprint equipment for Fingerprinting of new teachers and bus drivers in Kane County
- Implemented Blackboard 7.2 for online courses and teacher collaboration
- Hosting of over 6,000 teacher email accounts
- Digital Imaging of 180,000 records
- Consultation for KCHRC On-Line Application
- Hosted specialized training for school districts (i.e. SASI, Tech Assessment, etc.)

## Area One West Learning Technology Center

The Illinois State Board of Education established the Learning Technology Center program for the purpose of providing a coordinated, statewide support and infrastructure which assists school districts in planning for, implementing, assessing results and educating school staff in the use of technology and telecommunications in curricular, instructional and administrative functions. More information on the Learning Technology Center program can be found at <http://www.isbe.net/curriculum/elearning/default.htm>

Through this purpose, the Kane County Learning Technology Center has provided the following services using funding provided through the contract from ISBE.

- Attending Statewide Meetings
- Facilitated or Assisted schools with Technology Planning
- Provided funding for Conference Attendance for Technology Coordinators and Teachers
- Assisted Districts with funding and training for Reading / Math Initiatives using Technology
- Provide technical support for connection to the Illinois Century Network (ICN) (<http://www.illinois.net>)
- Provide network consultation for the design and implementation of Local Area Networks (LANs) and Wide Area Networks (WANs)
- Help schools with the monitoring, management, and troubleshooting of their WANs
- Work with ICN Staff to assist in troubleshooting
- Assist schools with E-Rate applications to the Federal government (<http://www.sl.universalservice.org>)
- Maintain the Kane County Educator Portal (<http://portal.kaneroe.org>)
- Provide Internet Safety Training including Parent Presentations (<http://www.isafe.org>)
- Provide Support and Training for the following online resources available to all Kane County Schools:
  - United Streaming (<http://www.unitedstreaming.com>)
  - EBSCO (<http://www.epnet.com>)
  - SkillsTutor (<http://www.skillstutor.com>)
  - Encyclopedia Britannica (<http://www.eb.com>)

For questions concerning this program, contact Phil Morris ([pmorris@kane.k12.il.us](mailto:pmorris@kane.k12.il.us)).

Funding: \$68,233

## Fingerprinting

The Regional Office of Education provides fingerprinting services for all our public school districts. The Illinois School Code requires all new employees to have both a State and FBI criminal background check. During the last year, over 4,500 people were fingerprinted. During FY08, the addition of private schools may occur due to changing legislation. The electronic submission of fingerprints allows the ROE to receive results usually within a 24 hour period so a school district can begin employment immediately.

## GIS (Geographic Information System)

The Kane County Regional Office of Education (ROE) offers school districts the opportunity to request the assistance of its geographic information system (GIS). The GIS allows for the creation of custom maps and geographic analyses for school districts. GIS has already proven to be a useful tool for Kane County school districts in the matter of attendance boundary changes. The software allows a school district to calculate student populations in a geographic area. Attendance areas can be broken down, allowing for smaller geographic units of measurement and the presentation of a variety of school boundary scenarios. Some transportation concerns can be represented in GIS. Bus routes, bus stops, and hazardous roads can be included in the GIS.

GIS allows school districts to create and take advantage of updatable maps to address geographic concerns. While not the answer to all problems, GIS proves its utility by presenting information in a graphical manner.

## National Institute For School Leadership

In 2006-2007, the Kane County Regional Office of Education sponsored a trainer of trainers model executive development program for school principals. The program continues and is provided by the National Institute For School Leadership (NISL).

Participants: 18                      Funding: \$108,000

## Kane County Regional Board of Trustees

The Regional Board of School Trustees is an elected body with the sole responsibility of action on detachment/annexation petitions regarding boundary changes between school districts in the region. The board meets on the first Monday of January, April, July and October. Meetings may be canceled due to lack of agenda items. Dr. Clem Mejia, Regional Superintendent, is the ex-officio Secretary for the Board of Trustees. The members of the Regional Board of School Trustees are:

Jon Zahm, <b>President</b>	Virgil Township	Term Exp. 2009
Penny Wegman, <b>Vice President</b>	Elgin Township	Term Exp. 2011
Doug Jones	Aurora Township	Term Exp. 2009
Chad Koppie	Rutland Township	Term Exp. 2013
Mary Shepro	St. Charles Township	Term Exp. 2013
G. Michael Stoffa	Blackberry Township	Term Exp. 2011
Kevin Williams	Geneva Township	Term Exp. 2013

## District Transportation Analysis

7/1/2006 - 06/30/2007

District	Average Number of Regular Transportation pupils Transported Per Year	Transportation Miles					Direct Costs				
		Regular	Vocational	Special Ed	Nonreimbursable	Total	Regular	Vocational	Special Ed	Nonreimbursable	Total
U46 ELGIN	21,820.00	2,600,235	0	2,117,736	452,050	5,170,021	10,421,645	0	8,199,200	1,980,151	20,600,996
101 BATAVIA	3,399.77	276,407	19,560	343,539	44,749	684,255	1,016,571	71,965	1,263,167	164,563	2,516,266
129 AURORA WEST	4,917.68	561,177	0	742,412	129,089	1,432,678	2,219,702	0	3,282,586	643,272	6,145,560
131 AURORA EAST	0.00	0	0	1,271,093	2,697	1,273,790	0	0	2,070,613	10,447	2,081,060
300 DUNDEE	15,953.00	1,396,576	0	839,253	499,398	2,735,227	7,502,526	0	3,507,559	1,317,512	12,327,597
301 CENTRAL	2,916.80	390,773	22,183	203,018	42,634	658,608	1,276,975	72,439	669,321	142,293	2,161,028
302 KANELAND	3,623.34	535,865	0	388,605	25,998	950,468	1,871,211	0	980,748	90,024	2,941,983
303 ST CHARLES	10,940.00	1,120,325	46,811	586,823	158,347	1,912,306	3,778,278	159,775	2,143,347	420,778	6,502,178
304 GENEVA	4,651.89	363,876	15,450	361,439	38	740,803	2,666,932	106,068	577,228	10,456	3,360,684
<b>TOTAL 2006-2007</b>	<b>68,222.48</b>	<b>7,245,234</b>	<b>104,004</b>	<b>6,853,918</b>	<b>1,355,000</b>	<b>15,558,156</b>	<b>30,753,840</b>	<b>410,247</b>	<b>22,693,769</b>	<b>4,779,496</b>	<b>58,637,352</b>

\*Information taken from the Illinois State Board of Education Website/Pupil Transportation Claim Reimbursement\*

## Classroom Buildings in Use – 7/01/06 – 6/30/07

CLASSROOM BUILDINGS IN USE - 7/1/06 - 6/30/07

DISTRICT	Elementary School		Middle or Junior High School		Senior High School		Mobile Classroom		Other, Special Ed, Voc Ed, Etc.	
	FY07	FY06	FY07	FY06	FY07	FY06	FY07	FY06	FY07	FY06
U46 ELGIN	40	40	8	8	5	4	57	40	6	4
101 BATAVIA	6	6	1	1	1	1	4	0	0	0
129 AURORA WEST	11	11	4	4	1	1	5	0	2	2
131 AURORA EAST	12	12	3	3	1	1	0	0	2	1
300 DUNDEE	15	13	3	5	2	3	16	32	4	2
301 CENTRAL	3	3	1	1	1	1	5	3	0	0
302 KANELAND	4	4	1	1	1	1	11	11	1	1
303 ST CHARLES	12	12	3	3	2	2	28	5	0	1
304 GENEVA	5	5	2	1	1	1	0	1	1	1
<b>TOTAL</b>	<b>108</b>	<b>106</b>	<b>26</b>	<b>27</b>	<b>15</b>	<b>15</b>	<b>126</b>	<b>92</b>	<b>16</b>	<b>12</b>



## Assessed Valuation Per ADA – School Property – Bonded Indebtedness

### FINANCE REPORT ASSESSSED VALUATION PER ADA - SCHOOL PROPERTY - BONDED INDEBTEDNESS

DISTRICT	ASSESSSED VALUATION FY2006	ASSESSSED VALUATION PER FY06 ADA	TOTAL SCHOOL TAX RATE	ORIGINAL COST	BONDED	BONDED	PCT CHG	% OF BONDING POWER USED
				OF PROPERTY & EQUIPMENT AS OF 6-30-06	INDEBTEDNESS AS OF 6-30-06	INDEBTEDNESS AS OF 6-30-07		AS OF 6-30-07
U46 ELGIN	5,136,173,526	145,758	4.7105%	550,224,736	380,083,840	364,109,311	-4.2%	53.6%
101 BATAVIA AURORA	1,189,151,129	202,038	4.2319%	77,183,641	46,610,000	42,615,000	-8.6%	28.4%
129 WEST AURORA	1,669,771,916	153,199	3.0406%	158,647,889	127,730,000	132,597,290	3.8%	55.4%
131 EAST	838,858,464	78,698	2.8461%	134,353,968	82,115,814	79,544,982	-3.1%	70.9%
300 DUNDEE	3,239,786,581	191,865	4.9038%	204,829,157	167,040,725	271,720,725	62.7%	37.4%
301 CENTRAL	546,715,390	219,125	4.4813%	56,062,356	56,643,091	57,106,014	0.8%	75.1%
302 KANELAND	760,898,841	207,714	4.2662%	111,180,787	59,301,360	70,575,447	19.0%	56.5%
303 ST CHARLES	3,057,967,893	244,757	3.6990%	237,166,512	178,400,000	172,395,000	-3.4%	42.3%
304 GENEVA	1,292,597,417	238,607	4.3798%	111,598,601	111,766,863	107,547,714	-3.8%	62.7%
TOTAL FY2007	17,731,921,157	171,096	---	1,641,247,647	1,209,691,693	1,298,211,483	7.3%	49.4%
TOTAL FY2006	16,069,855,366	160,236	---	1,453,114,151	---	---	-15.4%	64.5%
TOTAL FY2005	14,531,228,055	146,790	---	1,508,395,145	---	---	30.6%	54.6%
TOTAL FY2004	13,280,610,126	131,772	---	1,408,405,075	---	---	3.0%	58.0%
TOTAL FY2003	11,904,908,410	122,076	---	1,229,590,967	---	---	5.4%	61.4%
TOTAL FY2002	10,613,770,215	112,429	---	1,117,378,053	---	---	38.9%	58.0%

## FY 2007 Life Safety

### FY 2007 LIFE SAFETY

#	DISTRICTS	TOTAL SITES	FY2007 NOTATIONS	AVERAGE SITES	FY2006 NOTATIONS	CHANGE 2006 TO 2007
U46	ELGIN	58	1090	18.79	902	188
101	BATAVIA	8	174	21.75	153	21
129	AURORA WEST	19	369	19.42	468	(99)
131	AURORA EAST	20	596	29.80	463	133
300	DUNDEE	25	558	22.32	707	(149)
301	BURLINGTON	5	113	22.60	102	11
302	KANELAND	7	196	28.00	253	(57)
303	ST. CHARLES	18	335	18.61	372	(37)
304	GENEVA	9	228	25.33	197	31
	<b>TOTALS</b>	169	3659	21.65	3617	42

## FY 2007 Construction and Occupancy Permits

### FY 2007 CONSTRUCTION AND OCCUPANCY PERMITS

#	DISTRICT	NEW SITES	REPAIRS RENOVATION	ADDITIONS	TOTAL REQUESTED	APPROVED OCCUPANCY
U46	ELGIN	1	37	0	38	28
101	BATAVIA	0	10	0	10	18
129	AURORA WEST	0	13	0	13	13
131	AURORA EAST	0	3	0	3	13
300	DUNDEE	2	2	0	4	0
301	BURLINGTON		8	0	8	2
302	KANELAND	0	1	0	1	1
303	ST. CHARLES	0	30	0	30	30
304	GENEVA	2	5	0	7	5
	<b>TOTAL</b>	5	109	0	114	110

**Certified Personnel – 7/01/06 - 6/30/07**

		DEGREES - SALARIES - EXPERIENCE - STAFF/STUDENT RATIOS									
DISTRICT	TOTAL	DOCTORS & ED SPEC/CAS DEGREE	MASTERS DEGREE	BACHELORS DEGREE	TEACHERS AIDES (INCLUDE PART TIME)	AVG. SAL. FULL-TIME CERTIFIED TEACHERS	% of TRS	AVG. SAL. CERTIFIED ADMIN			
	(INCLUDE PART TIME)										
U46	ELGIN	2751	53	1767	931	394	\$51,899	9%	\$96,019		
101	BATAVIA	448	6	318	124	76	\$58,711	0%	\$91,436		
129	AURORA	756	7	612	137	175	\$54,002	9%	\$81,236		
131	WEST AURORA	723	15	438	270	190	\$48,597	0%	\$88,424		
300	EAST	1259	26	821	412	365	\$54,026	5%	\$97,896		
301	DUNDEE	242	9	141	92	29	\$47,690	9%	\$82,510		
302	CENTRAL	351	6	196	149	61	\$51,133	8%	\$73,691		
303	KANELAND	1013	26	675	312	311	\$53,661	8%	\$90,674		
304	ST CHARLES	433	17	312	104	117	\$60,948	1%	\$102,794		
			%= TRS AMOUNT PAID BY DISTRICT					# TRS PAYMENT VARIES			
	<b>TOTAL FY2007</b>	<b>7976</b>	<b>165</b>	<b>5280</b>	<b>2531</b>	<b>1718</b>	<b>\$53,407</b>		<b>\$89,409</b>		
			2.07%	66.20%	31.73%	21.54%					
	<b>TOTAL FY2006</b>	<b>8419</b>	<b>159</b>	<b>4840</b>	<b>3420</b>	<b>1672</b>	<b>\$52,868</b>		<b>\$92,279</b>		
			1.89%	57.49%	40.62%	19.86%					
DISTRICT		AVG. YRS. EXPERIENCE	ENROLLMENT PER CERTIFIED STAFF MEMBER FY2007	ENROLLMENT PER CERTIFIED STAFF MEMBER FY2006	TEACHER TO ADMINISTRATIVE STAFF RATIO	TEACHER TO SUPPORT STAFF RATIO	ENROLLMENT TO SUPPORT STAFF RATIO	ENROLLMENT PER FALL HOUSING RPT FY2007			
U46	ELGIN	12.0	14.7	15.4	17.4	2,198	18.4	40,379			
101	BATAVIA	11.1	14.0	14.5	18.7	93	67.3	6,261			
129	AURORA	8.5	16.5	9.8	10.4	247	50.6	12,503			
131	WEST AURORA	12.7	17.6	10.4	14.8	199	63.9	12,707			
300	EAST	12.3	15.2	16.3	22.5	352	54.4	19,161			
301	DUNDEE	9.9	12.2	11.4	20.2	160	18.4	2,941			
302	CENTRAL	9.6	11.8	11.4	16.7	164	25.3	4,146			
303	KANELAND	12.3	13.6	13.9	15.1	353	39.0	13,751			
304	ST CHARLES	10.7	13.7	13.8	19.7	237	25.1	5,946			
	<b>Average</b>	<b>11.0</b>	<b>14.4</b>	<b>13.0</b>	<b>17.3</b>	<b>4,003</b>	<b>40.3</b>	<b>117,795</b>			
	<b>PRIOR YEAR</b>	<b>11.3</b>	<b>13.0</b>	<b>13.8</b>	<b>17.8</b>	<b>3,898</b>	<b>37.0</b>	<b>114,344</b>			

## School Enrollment – 7/01/06 – 6/30/07

### FY07 Enrollment Enrollment - Public Schools - September 2006

District	School	FY06	FY07	Pre-K	K-5	6-8	9-12
U46	Elgin	40,154	40,379	1,063	18,658	9,270	11,388
101	Batavia	6,235	6,261	37	2,926	1,398	1,900
129	West Aurora	12,491	12,503	412	5,921	2,792	3,378
131	East Aurora	12,316	12,707	612	6,724	2,677	2,694
300	Dundee	18,670	19,161	484	8,835	4,423	5,419
301	Central	2,594	2,941	28	1,256	726	931
302	Kaneland	3,994	4,146	41	2,063	946	1,096
303	St. Charles	13,501	13,751	98	6,177	3,210	4,266
304	Geneva	5,814	5,946	73	2,558	1,445	1,870
<b>TOTAL FY07</b>			<b>117,795</b>	<b>2,848</b>	<b>55,118</b>	<b>26,887</b>	<b>32,942</b>
<b>TOTAL FY06</b>			<b>116,515</b>	<b>2,546</b>	<b>55,543</b>	<b>26,453</b>	<b>31,973</b>

Information taken from Illinois State Board of Education Fall Housing Report

## ISBE Federal and State Revenue

### ISBE FEDERAL & STATE REVENUE FISCAL YEAR ENDING JUNE 30, 2007

		STATE AID	STATE - OTHER	FEDERAL	TOTAL	\$ PER ADA
U46	ELGIN	65,292,258	37,276,796	22,432,100	125,001,154	3,496
101	BATAVIA	3,135,865	3,499,107	576,141	7,211,113	1,225
129	AURORA WEST	23,949,214	12,283,353	7,916,892	44,149,459	4,051
131	AURORA EAST	43,039,252	12,230,796	10,885,588	66,155,636	6,206
300	DUNDEE	22,736,708	14,770,978	8,538,957	46,046,643	2,727
301	CENTRAL	1,650,135	2,309,467	89,824	4,049,426	1,623
302	KANELAND	4,809,475	3,357,900	199,940	8,367,315	2,284
303	ST CHARLES	4,443,233	8,199,427	1,039,770	13,682,430	1,095
304	GENEVA	1,983,575	4,092,595	197,218	6,273,388	1,158
<b>TOTAL FY2007</b>		<b>171,039,715</b>	<b>98,020,419</b>	<b>51,876,430</b>	<b>320,936,564</b>	<b>3,081</b>
<b>TOTAL FY2006</b>		<b>171,042,106</b>	<b>87,945,334</b>	<b>45,031,212</b>	<b>304,018,652</b>	<b>3,031</b>
<b>CHANGE</b>		<b>0.0%</b>	<b>10.3%</b>	<b>13.2%</b>	<b>5.3%</b>	<b>1.6%</b>

**\*\*Additional Financial and District information may be obtained at [www.isbe.net](http://www.isbe.net) .**

---

## Kane County ROE FY07 Annual Report Index

Administrators' Academy .....	10	Learning Technology Services .....	13
Assessed Valuation .....	16	Learning Technology Center .....	13
Budget - County Portion .....	5	Legal Reference .....	5
Buildings in Use.....	17	Legislative Development .....	3
Career Awareness .....	10	Life Safety.....	17
Career Cruising .....	10	Middle School Endorsement.....	11
Certified Personnel.....	18	Networks .....	9
Cohorts .....	8	Organization Chart.....	4
Dropout Intervention.....	7	PBIS .....	7
Duties of Regional Staff.....	5	Permits .....	17
Educational Service Region .....	3	Professional Development .....	11
Educator of the Year .....	6	Regional Board of Trustees .....	14
Fingerprinting .....	14	RESPRO .....	9
Gang Task Force .....	11	Revenue.....	19
GED .....	7	Safe Schools.....	9
Gifted Education .....	9	School Enrollment .....	19
GIS – Geographic Information System.....	14	School Safety .....	7
Home Schooling.....	7	Superintendents.....	3
Homeless Education.....	9	Technical Assistance.....	13
Institute Fund .....	6	Transportation Analysis .....	15
Juvenile Justice Center.....	7	Youth Outreach.....	8
KCHRC.....	10		