

# Kane County Regional Office of Education



## 2008-2009 Annual Report

**Douglas E. Johnson, Regional Superintendent**  
**Harrison Schneider, Associate Superintendent**



**210 South 6th St, Geneva IL**  
**[www.kaneroe.org](http://www.kaneroe.org)**  
**630-232-5955**

**KANE COUNTY  
REGIONAL OFFICE OF EDUCATION**

DOUGLAS E. JOHNSON  
*Regional Superintendent*  
HARRISON SCHNEIDER  
*Associate Superintendent*



210 S. Sixth Street  
Geneva, IL. 60134  
Phone: 630-232-5955  
Fax: 630/208-5115  
[www.kaneroe.org](http://www.kaneroe.org)

**Regional Office of Education  
Fiscal Year 2009 Annual Report**

As Superintendent of the Kane County Regional Office of Education, Kane County, Illinois, I hereby submit the annual report of the activities of this office from July 1, 2008 through June 30, 2009.

This report is an overview and is not inclusive of all the services and collaborative partnerships the Regional Office of Education provides as an educational leader for the benefit of the schools and citizens of Kane County. This report uses information from end of year reports of our programs and services and from end of year school reports from the Illinois State Board of Education website to make this Annual Report as comprehensive as possible. We hope it will help you better understand the work our office and the educators of Kane County provide to ensure our schools are safe and nurturing places of learning where all people, young and old alike, are valued and respected.

Respectfully submitted,

Douglas E. Johnson  
Regional Superintendent of Schools  
Kane County Regional Office of Education

# Table of Contents

---

<b>TABLE OF CONTENTS</b> .....	<b>2</b>
<b>THE MISSION</b> .....	<b>4</b>
<b>KANE COUNTY SCHOOL DISTRICT INFORMATION</b> .....	<b>4</b>
<b>KANE COUNTY SCHOOL DISTRICT BOUNDARY MAP</b> .....	<b>5</b>
<b>KANE COUNTY REGIONAL OFFICE OF EDUCATION</b> .....	<b>6</b>
<b>ORGANIZATIONAL CHART</b> .....	<b>6</b>
<b>LEGISLATIVE</b> .....	<b>7</b>
LEGAL REFERENCE FOR ANNUAL REPORT .....	7
LEGISLATIVE DEVELOPMENT OF THE OFFICE.....	7
REGIONAL BOARD OF SCHOOL TRUSTEES .....	7
SUPERINTENDENT OF EDUCATIONAL SERVICE REGION .....	8
REGIONAL SUPERINTENDENTS OF SCHOOLS .....	9
<b>ALTERNATIVE PROGRAMS</b> .....	<b>10</b>
TRUANCY PREVENTION/INTERVENTION PROGRAM (105 ILCS 5/3-13).....	10
REGIONAL SAFE SCHOOLS PROGRAM (RSSP) (105 ILCS 5/13 A-8) .....	11
GENERAL EDUCATIONAL DEVELOPMENT (GED) (105 ILCS 5/3-15.12) .....	11
JUVENILE JUSTICE CENTER (105 ILCS 5/14-7.03) .....	12
HOME SCHOOLING (105 ILCS 5/26-1) .....	12
DROPOUT INTERVENTION PROGRAM .....	12
<b>BUSINESS OFFICE</b> .....	<b>13</b>
BUDGET – COUNTY PORTION .....	13
INSTITUTE FUND REPORT (105 ILCS 5/3-12) .....	14
<b>CERTIFICATION (105 ILCS 5/21)</b> .....	<b>15</b>
<b>HOMELESS EDUCATION PROGRAM</b> .....	<b>16</b>
KANE ROE EQUAL CHANCE PROGRAM (FEDERAL, TITLE 42, CH. 119) .....	16
<b>NETWORKS</b> .....	<b>17</b>
<b>PARTNERSHIPS</b> .....	<b>18</b>
CAREER CRUISING .....	18
CAREER AND TECHNICAL EDUCATION PARTNERSHIP .....	18
KANE COUNTY HUMAN RESOURCES CONSORTIUM (KCHRC) .....	18
KANE KARES.....	19
MASTER/DOCTORATE DEGREE PROGRAMS .....	19
OPERATION SNOWBALL.....	19
16TH CIRCUIT COURT GANG TASK FORCE .....	20
SPELLING BEE .....	20
ASSOCIATION FOR INDIVIDUAL DEVELOPMENT (AID) .....	20
<b>PROFESSIONAL DEVELOPMENT (105 ILCS 5/3-14.6-9)</b> .....	<b>21</b>
ILLINOIS ADMINISTRATORS’ ACADEMY (105 ILCS 5/2-3.53).....	21
INSTITUTE DAY (105 ILCS 5/3-11) .....	23
OTHER PROFESSIONAL DEVELOPMENT OFFERINGS.....	24
SYSTEM OF SUPPORT, RESPRO AREA 1-C (FEDERAL NCLB) .....	24
PRINCIPAL MENTORING (105 ILCS 5/2-3.53A) .....	25

POSITIVE BEHAVIOR INTERVENTIONS AND SUPPORT (PBIS) .....	26
GIFTED EDUCATION SEMINAR.....	27
EDUCATOR OF THE YEAR AWARDS .....	27
<b>SCHOOL SAFETY &amp; SECURITY (105 ILCS 5/3-14.20).....</b>	<b>28</b>
HEALTH AND LIFE SAFETY .....	28
SCHOOL HEALTH/WELLNESS TEAM .....	28
SCHOOL SAFETY & SECURITY TEAM .....	29
FACILITY MANAGERS' NETWORK .....	29
<b>TECHNOLOGY .....</b>	<b>30</b>
AREA ONE WEST LEARNING TECHNOLOGY CENTER (105 ILCS 5/2-3.117).....	30
FINGERPRINTING (105 ILCS 5/10-21.9) .....	30
GEOGRAPHIC INFORMATION SYSTEM (GIS) (105 ILCS 5/7-6) .....	31
LEARNING TECHNOLOGY SERVICES (105 ILCS 5/2-3.118) .....	31
KANE COUNTY GOVERNMENT TECHNOLOGY WORKSHOPS .....	32
<b>TRANSPORTATION .....</b>	<b>33</b>
SCHOOL BUS DRIVER TRAININGS (105 ILCS 5/3-14.23) .....	33
SERIOUS SAFETY HAZARD ROUTE APPLICATIONS (105 ILCS 29-5.2) .....	33
PUPIL TRANSPORTATION- JULY 1, 2008 – JUNE 30, 2009 .....	34
<b>FINANCE REPORTS.....</b>	<b>35</b>
ASSESSED VALUATION PER ADA – SCHOOL PROPERTY – BONDED INDEBTEDNESS .....	35
CERTIFIED PERSONNEL .....	36
CERTIFIED PERSONNEL CONTINUED .....	37
CLASSROOM BUILDINGS IN USE – JULY 1, 2008 – JUNE 30, 2009 .....	38
PUBLIC SCHOOL ENROLLMENT – SEPTEMBER 2008 .....	38
ISBE FEDERAL & STATE REVENUE – FISCAL YEAR ENDING JUNE 30, 2009 .....	39
<b>FY09 ANNUAL REPORT INDEX .....</b>	<b>40</b>

# The Mission

---

The mission of the Kane County Regional Office of Education is to serve as an advocate for education by providing collaborative leadership, performing regulatory functions as directed in the [Illinois School Code](#) and in partnership with the Illinois State Board of Education, provide access to educational resources to facilitate learning, and disseminate information for educators, school districts, and the community.

## Kane County School District Information

---

### **School District U-46**

Dr. Jose Torres, Superintendent  
355 E. Chicago Street,  
Elgin, IL 60120  
Phone: 847-888-5000  
[www.u-46.org](http://www.u-46.org)

### **School District 101**

Dr. Jack Barshinger, Superintendent  
335 W. Wilson Street  
Batavia, IL 60150  
Phone: 630-937-8800  
[www.bps101.net](http://www.bps101.net)

### **School District 129**

Dr. James Rydland, Superintendent  
Box 4430, 80 S. River Street  
Aurora, IL 60506  
Phone: 630-301-5000  
[www.sd129.org](http://www.sd129.org)

### **School District 131**

Dr. Jerome Roberts, Superintendent  
417 Fifth Street  
Aurora, IL 60505  
Phone: 630-299-5550  
[www.d131.org](http://www.d131.org)

### **School District 300**

Dr. Kenneth Arndt, Superintendent  
300 Cleveland Avenue  
Carpentersville, IL 60110  
Phone: 847-426-1300  
[www.d300.org](http://www.d300.org)

### **School District 301**

Dr. Todd Stirn, Superintendent  
275 South Street, Box 396  
Burlington, IL 60109  
Phone: 847-464-6005  
[www.burlington.k12.il.us](http://www.burlington.k12.il.us)

### **School District 302**

Dr. Charles McCormick, Superintendent  
47W326 Keslinger Road  
Maple Park, IL 60151  
Phone: 630-365-5111  
[www.kaneland.org](http://www.kaneland.org)

### **School District 303**

Dr. Donald Schlomann, Superintendent  
201 South 7<sup>th</sup> Street  
St. Charles, IL 60174  
Phone: 630-513-3030  
[www.d303.org](http://www.d303.org)

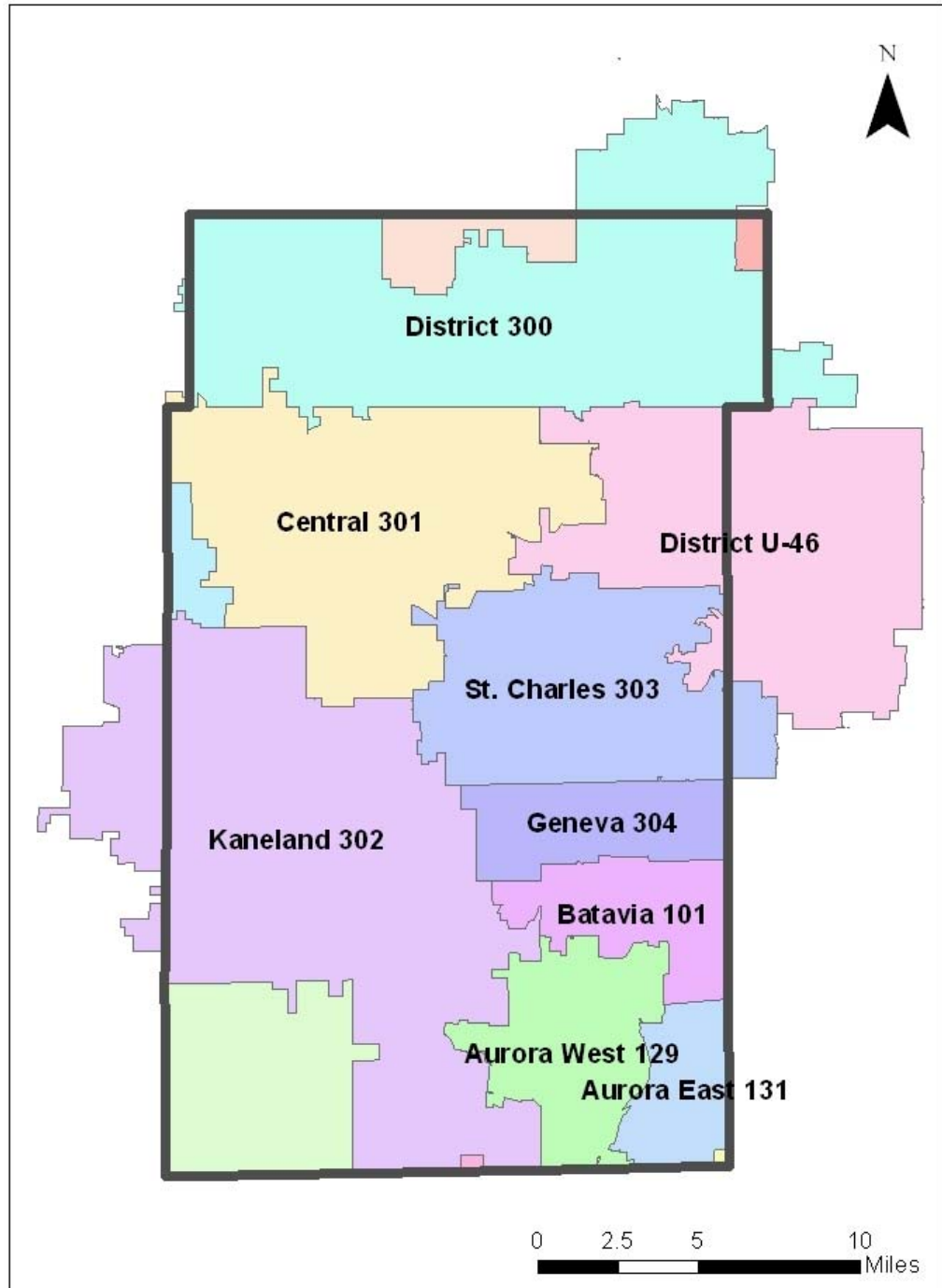
### **School District 304**

Dr. Kent Mutchler, Superintendent  
227 North Fourth Street  
Geneva, IL 60134  
Phone: 630-463-3000  
[www.geneva304.org](http://www.geneva304.org)



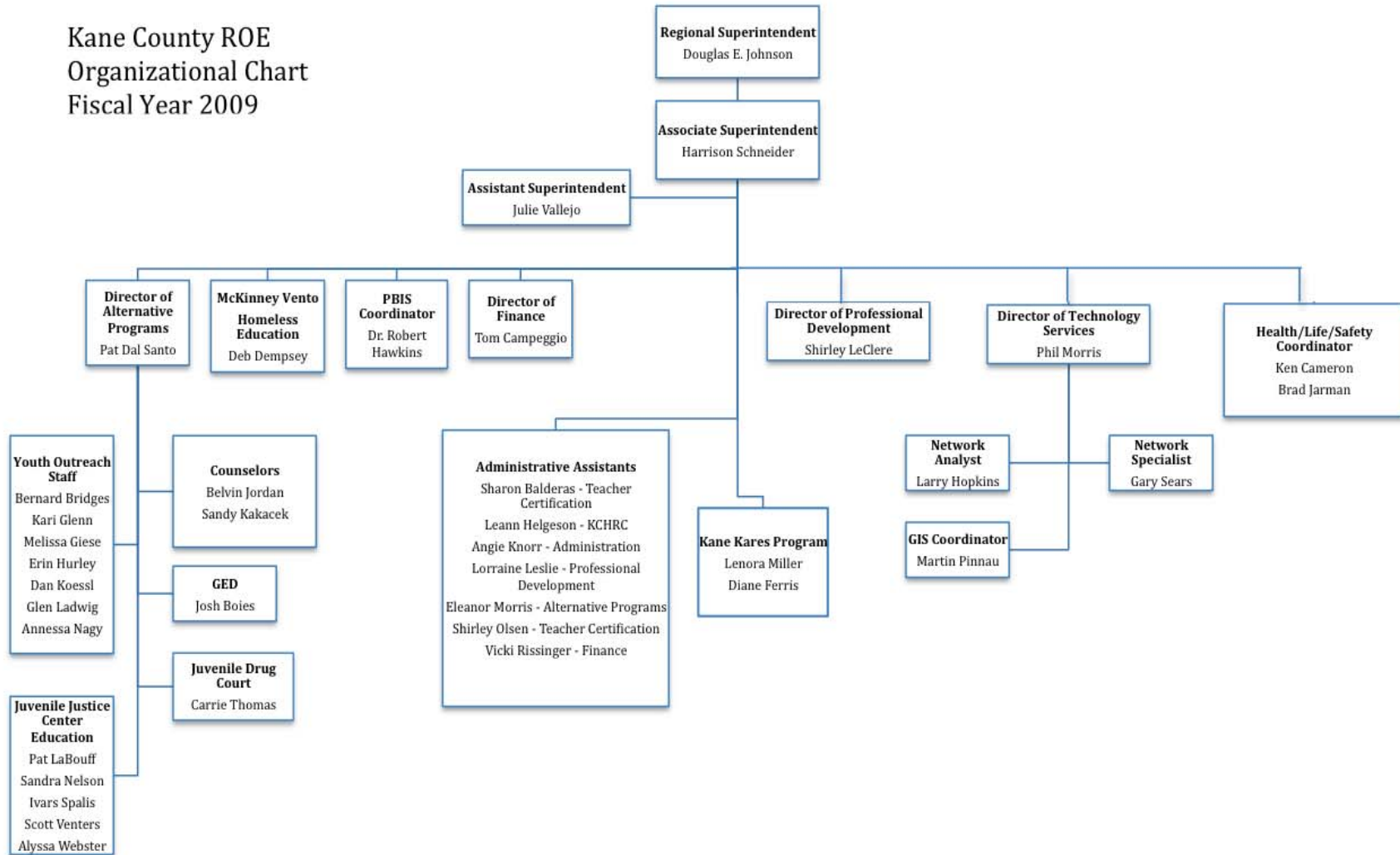
# Kane County School District Boundary Map

---



# Kane County Regional Office of Education Organizational Chart

Kane County ROE  
Organizational Chart  
Fiscal Year 2009



# Legislative

Contact Person: Douglas Johnson, Regional Superintendent, [djohnson@kaneroe.org](mailto:djohnson@kaneroe.org)

## **Legal Reference for Annual Report**

This annual report is designed in part to meet the provisions of Chapter 105, Article 3, Sections 5/3-5, 5/3-6 and 5/3-15.8 of the School Code of Illinois. The report of schools visited and other official acts, meetings and activities of the office are provided to the Public Service Committee of the Kane County Board at regular monthly meetings.

## **Legislative Development of the Office**

- 1829 The sixth General Assembly mandated appointment of a Commissioner of School Lands.
- 1841 Title changed to County Commissioner and Ex-Officio County Superintendent of Schools.
- 1865 Legislature called for the election of the County Superintendent of Schools.
- 1973 Consolidation of smaller counties resulted in 78 regions.
- 1975 Title of Chief Administrative Officer of an education service region changed to Regional Superintendent of Schools.
- 1977 Further consolidation resulted in 57 regions in Illinois.
- 1993 Educational Service Region office renamed Regional Office of Education.
- 1995 Further consolidation resulted in 45 regions, each with a population of at least 45,000 inhabitants.

## **Regional Board of School Trustees**

The Regional Board of School Trustees is an elected body with the sole responsibility of action on detachment/annexation petitions regarding boundary changes between school districts in the region. The board meets on the first Monday of January, April, July and October. Meetings may be canceled due to lack of agenda items. Douglas Johnson, Regional Superintendent, is the ex-officio Secretary for the Board of Trustees.

The members of the Regional Board of School Trustees are:

Penny Wegman, President	Elgin Township	Term Exp. 2011
G. Michael Stoffa, Vice President	Blackberry Township	Term Exp. 2011
Chad Koppie	Rutland Township	Term Exp. 2013
Mary Shepro	St. Charles Township	Term Exp. 2013
Juan Sifuentes	Aurora Township	Term Exp. 2015
Stephen R. Wallace	Sugar Grove Township	Term Exp. 2015
Kevin Williams	Geneva Township	Term Exp. 2013



## ***Superintendent of Educational Service Region***

The act of Congress which admitted Illinois to the Union in 1818 set aside the sixteenth section of every township for the use of schools. In 1819, therefore, the General Assembly directed the county commissioners' court in each county to appoint three trustees from each township. These trustees, whose terms ran for four years, were charged with hiring a surveyor, laying out section 16 into lots, leasing those lots for no more than a ten year period, and appointing a clerk and treasurer to handle the leases. In 1827 this was modified to give the trustees responsibility for laying out school districts within the township. These districts were to contain no fewer than 18 scholars, and the trustees were to hire a teacher for the district.

The situation changed in 1829, when Congress agreed to permit the sale of section 16 lands. For the first time, the county commissioners' court could appoint a commissioner and agent for the county school lands. This position was the predecessor of the Regional Superintendent of Schools. The commissioner was required to prepare a record of the school lands in the county. When nine-tenths of the voters in any township decided to sell their school lands, they were required to petition the commissioner in writing. In turn, he arranged the sale, and loaned the money from the sale back to the township.

During the 1830's, minor changes were made in the school law. The percentage of voters required to sign a petition for sale of school lands was reduced and the county commissioners' court again appointed township school trustees. Most important, in 1837 the citizens of a township were given the choice of incorporating for the purpose of establishing and supporting common schools. The trustees were assigned the superintendence of the township schools, and they could appoint a clerk, who would also act as treasurer.

The school land commissioner was required to pay to this treasurer all of the money in his care which belonged to the township, and would deliver to him all bonds, notes, and mortgages. The township treasurer made an abstract, in return, which showed the name of each teacher, the number of scholars at each school, and the total number of days taught. The treasurer was to deliver this abstract to the school land commissioner and receive the interest due the township from the state's school, college, and seminary lands.

In 1841, the office of school commissioner became elective, for a term of two years. This same year, each school district was required to elect a board of three school directors, also for two-year terms. The school directors were empowered to select building sites, build schools, employ teachers, and visit the district schools. In townships which had not chosen to incorporate, the trustees of school lands could appoint school directors if none were elected.

The school law was under continual revision during the 1840's, and in 1845 the school commissioner was made *ex officio* county superintendent of the common schools. His duties included visiting the schools, examining teachers, and issuing certificates. By 1865, each county elected a superintendent of schools every four years. Township school trustees reported to this superintendent on the number of schools, the number of scholars, the number of male and female teachers, the compensation of teachers, the number of persons under age 21 in the township, the principal and interest of the township fund, the amount of the common school fund received by the treasurer, the amount raised by taxation, all other receipts and expenditures, and any other information required by the superintendent.

Most of the original regulatory duties as mandated by Illinois School Law remain the responsibility of the Regional Superintendent of Schools like registering educators' certificates, approving and conducting teacher institutes, handling school lands, visiting schools, and examining the accounts of all school treasurers in the county. But over the last

*“You don’t lead by pointing and telling people some place to go. You lead by going to that place and making a case.”*

*~ Ken Kesey*

century many more mandated duties and responsibilities of the office have been added. For example in the area of certification, before a certificate can be re-registered, every individual professional development activity in the educator's required professional growth plan must be reviewed and approved as part of the rigorous re-certification process. Every new school employee is now fingerprinted and a criminal background check is conducted in partnership with the Illinois State Police and the FBI.

While the world has seen vast changes over the last century, the Regional Office of Education remains committed to providing quality service and performing its mandated functions. The Regional Office of Education remains dedicated to ensuring every child and citizen has the educational opportunity to achieve success.

### **Regional Superintendents of Schools**

R.B. “Bink” Makes	Prior to 1975
James L. Hanson	1975 – 1987
Dr. Douglas L. Hoeft	1987 – 1992
Dr. Clem Mejia	1993 – 2007
Douglas E. Johnson	2007 - Present

# Alternative Programs

Contact Person: Pat Dal Santo, Director of Alternative Programs, pdalsanto@kaneroe.org

## **Truancy Prevention/Intervention Program (105 ILCS 5/3-13)**

In 2008 – 2009 the Regional Office of Education completed the 24<sup>th</sup> year of the Kane County Truancy Prevention Program. Youth Outreach Workers (truant officers) collaborate with schools to advocate for students and parents to insure consistent school attendance.

Kane County had 1522 “official” referrals from our local schools requesting truancy assistance from our staff. The services provided during the 2008 – 2009 year were the following:

<b>Services</b>	<b>2008 – 2009</b>
School Visits	2,840
Home Visits	915
Student Contacts	3,021
Community Agency Contacts	753
School Conferences	312
Regional Conferences	30
Classroom Prevention Presentations	88
Retrieved Drop-outs to GED Program	78
Juvenile Court Cases	39
Adult Court Cases	14

<b>Source of Referrals by District</b>	<b>2008 – 2009</b>
U46 Elgin	443
101 Batavia	19
129 West Aurora	228
131 East Aurora	622
300 Dundee/Carpentersville	145
301 Central	6
302 Kaneland	10
303 St. Charles	34
304 Geneva	8
Other	7
<b>By Grade Level</b>	
Elementary K – 5	469
Middle School	416
High School	637
Other	0
<b>By Gender</b>	
Males	830
Females	692

### ***Regional Safe Schools Program (RSSP) (105 ILCS 5/13 A-8)***

The Regional Safe Schools Program serves expulsion-eligible and/or multiply suspended students. The statewide program, authorized through the Regional Offices of Education, began serving students in 1996 as established by the Illinois School Code to provide a system of alternative education programs for disruptive students. The purpose of the RSSP is twofold: 1) to increase safety and promote the learning environment in schools and 2) to meet the particular educational needs of disruptive students more appropriately and individually in an alternative educational environment. This is a cooperative effort between the Regional Office of Education and the local school districts. The programs within school districts are designed to meet local needs. In 2008-2009 two hundred fifty students were served through this program. Without this program those students would not have received an education and would have most likely become dropouts.

### ***General Educational Development (GED) (105 ILCS 5/3-15.12)***

General Educational Development (or GED) tests are a group of five subject tests which (when passed) certify that the taker has high school-level academic skills. To pass the GED Tests and earn a GED credential, test takers must score higher than 40 percent of graduating high school seniors nationwide. In addition they must pass the Constitution test.

The Regional Superintendent is delegated with the responsibility of administering the G.E.D. testing program in accordance with the Illinois School Code. This program allows those who are 17 years of age to secure a High School Equivalency Certificate upon completing and passing all tests.

Testing centers have been established in Kane County at the Regional Office of Education in Geneva, Elgin Community College in Elgin and Waubensee Community College in Aurora. Tests are administered on Saturdays and require at least 3 Saturdays to complete the battery. The Kane County Regional Office of Education is an official scoring center with equipment for scanning and scoring all tests except the essay portion. A \$50.00 fee is charged to cover the cost of tests, administration of tests, grading, and the certificate.

Highlights of the 2008-2009 GED Testing Program include:

- Increased the number of GED first time test takers by 60% to 1,300
- Issued 893 GED Diplomas
- Processed over 500 Transcripts and Employer Verifications
- Registered, scheduled, and tested over 2,400 individuals at ROE approved test sites

### ***Juvenile Justice Center (105 ILCS 5/14-7.03)***

To guarantee that students in juvenile detention continue to be educated and make a successful transition back into their public school program, the Kane County Regional Office of Education runs the Kane County Juvenile Justice Center Education Program. An agreement between the St. Charles School District, the Chief Judge and the Kane County Regional Office of Education makes this possible. Certified teachers give daily instruction year-round in language arts, math, science and social studies. The Education Program Coordinator serves as administrator and communicates with the students' public schools to help with transfers. During this year, 511 students received educational services from the Kane County Juvenile Justice Center teachers.

### ***Home Schooling (105 ILCS 5/26-1)***

Home schooling in Illinois is considered to be a form of private education. Parents who choose to educate their children at home are under a legal obligation to meet the minimum requirements stated in Illinois' Compulsory Attendance Law (Section 26-1 of the Illinois School Code). Parents who choose to educate their children at home are obligated to teach their children "...the branches of education taught to children of corresponding age and grade in the public schools" and they are further obligated to offer instruction in these core courses in the English language. The "branches of education" include language arts; mathematics; biological and physical sciences; social sciences; fine arts; and physical development and health.

The Regional Office of Education serves as a resource to those parents who are interested in home schooling their children. Information is shared with the parents to assist them. A request is made for parents to register with the Regional Office as a home-schooling parent and assure that education is being provided to their children. There are no fees collected for resource information.

### ***Dropout Intervention Program***

The Kane County Dropout Intervention Program completed its 21<sup>st</sup> year in the 2008-2009 school year. This program reaches out to those individuals who have dropped out of school for a variety of reasons. Information is provided to them regarding continuing their education in some manner through returning to school, obtaining a GED or vocational programming. In 2008-2009, services were provided to 780 dropouts.



# Business Office

Contact Person: Tom Campeggio, Director of Finance, [tcampeggio@kaneroe.org](mailto:tcampeggio@kaneroe.org)

## Budget – County Portion

A portion of the funds for the operating budget of the Kane County Regional Office of Education is provided by the Kane County Government. The salaries for the Regional Superintendent and the Associate Regional Superintendent are paid by the State of Illinois. The majority of funding for the operating budget for the office comes from competitive private, state, and federal grants.

The following budget figures are based on the County's fiscal year, which runs from December 1<sup>st</sup> through November 30<sup>th</sup>.

### Kane County Budget Estimates FY 2008 - 2009

Line Item	FY 2008 Budgeted Amount	FY 2009 Budgeted Amount	Percent Change
<b>Personnel Services</b>			
Full-Time Salaries	\$ 247,391.00	\$ 234,440.00	
Part-Time Salaries	\$ -		
<b>Contractual Services</b>			
Public Official Bonding	\$ 500.00	\$ 100.00	
Trials & Cost of Hearings	\$ 100.00	\$ 50.00	
Printing - Legal	\$ 150.00	\$ 50.00	
Printing - General	\$ 1,000.00	\$ 100.00	
Maintenance - Computers	\$ 300.00	\$ -	
Maintenance - Copiers	\$ 300.00	\$ -	
Conference & Meetings	\$ 4,500.00	\$ 500.00	
Employee Training	\$ 200.00	\$ -	
Mileage Expense	\$ 4,500.00	\$ 500.00	
Association Dues	\$ 1,475.00	\$ 200.00	
<b>Commodities</b>			
Office Supplies	\$ 3,600.00	\$ 1,500.00	
Data Processing Supplies	\$ 1,200.00	\$ -	
Books & Subscriptions	\$ 600.00	\$ -	
Operating Supplies	\$ 660.00	\$ 500.00	
<b>Totals</b>	<b>\$ 266,476.00</b>	<b>\$ 237,940.00</b>	<b>-10.71%</b>

**Institute Fund Report (105 ILCS 5/3-12)**

All certificate registration fees and a portion of renewal and duplicate fees are to be kept by the Regional Superintendent and deposited into the institute fund. The expenditure of these funds is very restricted and is used to defray expenses incidental to teachers' institutes, workshops, or meetings of a professional nature that are designed to promote the professional growth of teachers, or of any general or special meeting of teachers or school personnel of the region, which has been approved by the Regional Superintendent.

**INSTITUTE FUND FINANCIAL REPORT  
JULY 1, 2008 THRU JUNE 30, 2009**

<b>BEGINNING FUND BALANCE, JULY 1, 2008</b>		<b>424,564.76</b>
<b>RECEIPTS</b>		
1 YEAR REGISTRATIONS	3,360.00	
MULTI-YEAR REGISTRATIONS	34,635.00	
REGISTRATION RENEWALS-PAST YEAR	596.00	
DUPLICATE CERTIFICATES	220.00	
TEACHER CERT APPLICATION	23,000.00	
DUE TO ISBE-TEACHER CERT APPL	(58,360.00)	
INTEREST	4,446.93	
EDUCATOR OF THE YEAR	13,871.00	
REFUNDS & ADJUSTMENTS	(664.00)	
	<b>TOTAL RECEIPTS</b>	<b>21,104.93</b>
<b>DISBURSEMENTS</b>		
PURCHASED SERVICES	48,819.76	
TRAVEL	215.60	
DUES & FEES	2,473.00	
PROFESSIONAL & TECHNICAL SERVICES	1,833.98	
	<b>TOTAL DISBURSEMENTS</b>	<b>53,342.34</b>
<b>ENDING FUND BALANCE, JUNE 30, 2009</b>		<b>392,327.35</b>

## Certification (105 ILCS 5/21)

---

Contact Person: Douglas Johnson, Regional Superintendent, [djohnson@kaneroe.org](mailto:djohnson@kaneroe.org)

The Kane County Regional Office of Education certification department serves teachers and administrators with all aspects of their certification needs. The office provides assistance with certificate applications, renewal/registration, and adding endorsements and approvals on existing certificates. The office also helps educators utilize the Educator Certification System (ECS) through the Illinois State Board of Education's website to enter their professional development by answering many questions via email or phone calls.

The Regional Office of Education reviews and approves all professional development activities for certificate renewal. Before a certificate can be re-registered, every individual professional development activity in the educator's required professional growth plan must be reviewed and approved as part of the rigorous re-certification process. In 2009 the ROE has issued over 1,500 new teaching certificates, over 800 new substitute teaching certificates and managed over 7,200 registered certificates. The Kane County ROE tested 167 Paraprofessionals so they can obtain their NCLB Paraprofessional Approval.

The ROE hosts and maintains the Kane County Human Resource Consortium online teacher application and vacancy system for all Kane County public school districts. There were more than 14,000 applicants in the KCHRC system in 2008-2009.

*"It is the supreme art of the teacher to awaken  
joy in creative expression and knowledge."*

*~ Albert Einstein*

# Homeless Education Program

---

Contact Person: Julie Vallejo, Assistant Superintendent, [jvallejo@kaneroe.org](mailto:jvallejo@kaneroe.org)

## ***Kane ROE Equal Chance Program (Federal, Title 42, ch. 119)***

Homeless children and youth face numerous obstacles in obtaining an education. All children including homeless are entitled to a free public education. The goal of the Kane County Homeless Education Program is to assist the Kane County School Districts by:

- Providing technical assistance
- Increase awareness of definition/rights of the homeless to school administrators, staff and other school district personnel
- Share best practices for the education of homeless children and youth
- Facilitate collaborations between schools, social service agencies (including Continuum of Care), shelters and community groups
- Assist districts in the revisions of policies that address barriers for homeless students
- Assist districts with required data reporting

The federal McKinney-Vento Act requires school districts to be pro-active in finding homeless children who are not attending school and identifying which children and youth are homeless.

The Kane County ROE Equal Chance Program assists Kane County School Districts by;

- Training school staff, social service agency and community agency staff
- Providing outreach and outreach materials to schools and places that have of low income families
- Facilitating bimonthly parent meetings at shelters
- Collaborating with ROE Youth Outreach Workers and Safe Schools Facilitators
- Providing direct and supportive assistance to families/youth in need

For the 2008-2009 school year the ROE Equal Chance Program provided:

- 9 trainings to all school staffs including Head Start staff
- 10 Administrators' Academies
- 3 social service agency trainings
- Facilitated 10 parent meetings
- Coordinated the CLC Back To School Fair, distributing 520 backpacks filled with school supplies and attended by 40 social service agencies
- Distributed Christmas Gifts donated by churches and the Kane ROE to 255 children
- Distributed 40 Thanksgiving and Easter food baskets to Kane County families
- Facilitated and funded tutoring for 20 homeless students in Kane County
- Partnered with West Aurora/Aurora University After School Tutoring Program (including providing school supplies)

This program is administered by the Area One Lead Program and funded by a grant from the Illinois State Board of Education through the McKinney –Vento Homeless Assistance Act of 2001.

For the 2008-2009 school year, school districts in Kane County served and reported 1260 homeless students, a 77.6% increase from the previous year.

## Networks

---

Networks provide mutual assistance and support that facilitates sharing of information and services among individuals and groups. Constant feedback and strong participation indicates that networks are serving the nine Kane County school districts and their staffs well through sharing of best practices, working together to solve common problems and providing savings through collaborative program development. Collaborative professional development opportunities are regularly developed like the annual county wide institute day resulting in saving precious budget dollars.

The networks are prominently mentioned as a benefit for new members as they gain expertise from experienced colleagues throughout the region. Regional office of education leadership also participates in area and statewide networks like regional superintendents, administrators' academy coordinators, professional development directors, safe school directors and technology directors.

The ROE has established the following networks with the nine K-12 school districts in its jurisdiction:

- Superintendents
- Kane County Learning Leaders (directors of curriculum and instruction)
- Kane County Human Resources Consortium (human resources directors)
- Facilities Managers
- Gifted Education Directors
- Northern Illinois Association w/ Special Education Directors
- Reading Leaders
- School Safety/Security Team
- School Health/Wellness Team
- Special Education Directors
- Technology Directors
- Transportation Directors
- Transportation Routers

*“Synergism is the simultaneous actions of separate entities which together have greater total effect than the sum of their individual effects.”*

*~ Buchholz and Roth*



# Partnerships

---

## ***Career Cruising***


It is important for every student to have the opportunity to examine their own interests and talents, gain an awareness of the multitude of jobs and careers available in the work world of the 21<sup>st</sup> Century, and to set educational goals and plan for specific steps to achieve their chosen career path.

Career Cruising is a user friendly electronic career guidance program for use by students that combines comprehensive career information, first class assessment tools, a comprehensive post-secondary school data base, financial aid information, a portfolio and resume system, and an administrative component . The Kane County ROE, Northern Kane Education for Employment System, and VALEES Education for Employment System partnership provides Career Cruising site licenses for all high schools and middle schools within the region.

## ***Career and Technical Education Partnership***

The Kane County Regional Office of Education, VALEES Education for Employment System, and Northern Kane Education for Employment System continue to partner in offering professional development opportunities to public school counselors, teachers, and administrators.

- Training in use of the Career Cruising electronic portfolio program
- “Reading Strategies for Career & Technical Education” with Aurora University at the ROE on evenings and weekends throughout the year
- “Building Employability Skills for the 21<sup>st</sup> Century” with Aurora University at the ROE on evenings and weekends throughout the year
- “Promoting Career and Academic Readiness” through Northern Illinois University at the ROE on evenings and weekends throughout the year
- “Community/School Partnership” through Northern Illinois University at the ROE



*“Our success has really been based on partnerships from the beginning.”*

*~ Bill Gates*

## ***Kane County Human Resources Consortium (KCHRC)***

The Kane County Human Resources Consortium (KCHRC), formed in 2002, is a cooperative effort among the nine public K-12 school districts and the Regional Office of Education in Kane County, Illinois. The KCHRC is dedicated to the recruitment, selection, and professional growth of quality educators. The Consortium has created a single online application process allowing applicants to submit a teaching application to all nine districts at once. Kane County school administrators are trained to utilize the system in the hiring of all certified teachers.

District human resources directors meet twice a month with the ROE for planning and professional development. More information on the online application can be found at [www.teachinkane.org](http://www.teachinkane.org)

## **Kane Kares**

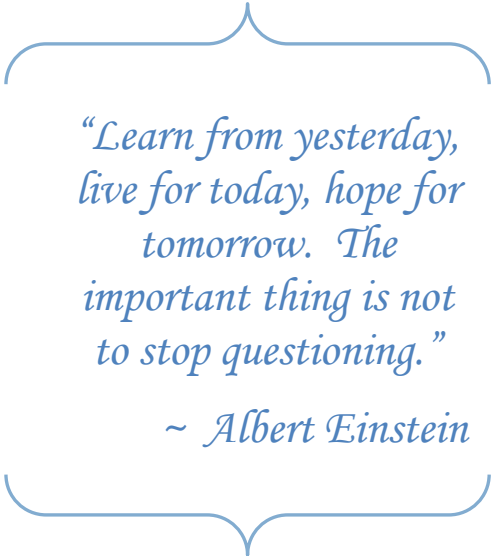
The Kane County Regional Office of Education collaborated with the Kane County Health Department to support its “Kane Kares” program designed to assist mothers during their pregnancy and with parent education. In this program a specially-trained Registered Nurse conducts home visits to first-time mothers and provides medical support and counsel during the pregnancy and until the baby’s second birthday.

## **Master/Doctorate Degree Programs**

The Kane County Regional Office of Education and Aurora University collaborated to develop and provide a Master and Doctoral program for the teachers in Kane County. These classes are intentionally structured so the skills and knowledge the teachers learn can immediately be applied to the classrooms. Many graduate courses are hosted at the ROE throughout the year on evenings and weekends.

## **Operation Snowball**

Greater Fox River Valley Operation Snowball (GFRVOS) is a community-based, alcohol, tobacco and drug use prevention program focusing on leadership development to empower youth to lead drug-free lives. The name originates from the idea that "If I can have a positive impact on you, you can have a positive impact on someone else and the effect snowballs." Out of this concept emerges "A Community of Caring" - the success of Operation Snowball.



*“Learn from yesterday,  
live for today, hope for  
tomorrow. The  
important thing is not  
to stop questioning.”*

*~ Albert Einstein*

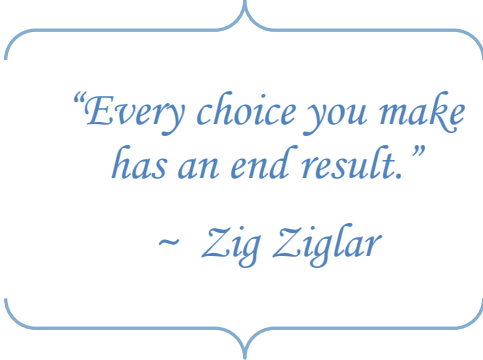
Operation Snowball seeks to bring together high school youth and caring adults to develop a trusting relationship. It is founded on the belief that youth and adults can make responsible decisions when provided with factual information and an opportunity to develop an understanding of one's self and others.

Currently there are 12 participating high schools within Kane County. The group meets at the ROE every Thursday evening. Twice during the year they have a weekend event which has 150 student attendees. All events are co-sponsored and partially funded by the ROE.

## **16th Circuit Court Gang Task Force**

The Kane County Regional Office of Education has been represented on the gang task force for the past eight years through attendance at monthly meetings and by partnering with professional development programs for educators, juvenile court services personnel, Juvenile Justice Center personnel, and law enforcement. This partnership has helped to build bridges between professionals that serve “at-risk youth” in our region. Gang task force members yearly provide professional development for county-wide teacher institute day programs on gang related topics, the probation

process as it relates to schools and gang influence on society. This year the gang task force, the ROE, and School District #303 sponsored the renowned Lt. Colonel David Grossman for a highly rated, full day presentation on “The Culture of Violence in Our Society” for 500 law enforcement officers, court services personnel, educators and members of the community.



*“Every choice you make  
has an end result.”*

*~ Zig Ziglar*

## **Spelling Bee**

In cooperation with the Scripps Howard National Spelling Bee and our local sponsor, the Kane County Chronicle, the ROE is proud to coordinate the Spelling Bee for our Kane County public and non-public schools. At the beginning of each school year, all schools that register with Scripps to participate have individual school Spelling Bees. The winners’ names are reported to the Kane County Regional Office of Education. The regional Spelling Bee dates and sites are scheduled to take place in February. The winners from those regional competitions have a final competition in March before one winner for Kane County proceeds to the Scripps National Spelling Bee in Washington D.C. in May. The local and regional Spelling Bees are coordinated and funded by the Regional Office of Education.

## **Association for Individual Development (AID)**

The Association for Individual Development serves physically and mentally handicapped individuals within the region and beyond. The ROE hosts their regularly scheduled board meetings.

# Professional Development (105 ILCS 5/3-14.6-9)

Contact Person: Shirley LeClere, Director of Professional Development, sleclere@kaneroe.org

The Regional Office of Education facilitates and works collaboratively with teachers and leaders to guide their continuous instructional improvements through professional development opportunities. Our office establishes educational partnerships that offer best practices for enhancing student achievement.

The Regional Office of Education supports a wide variety of activities including institutes, workshops, conferences, networking, technical assistance, information dissemination, and consulting to meet the needs of our schools. These activities are designed to complement the other Kane County Regional Office of Education and district professional development programs. Our office collaborates with local, regional, and state educational partners representing both the public and private sector in creating learning opportunities for the entire Kane County Learning Community.

Reading First and System of Support (RESPRO-Area 1) activities supported through No Child Left Behind (NCLB) federal funding are aligned with the goals articulated in the Illinois State Board of Education and the No Child Left Behind guidelines.

## **Illinois Administrators' Academy (105 ILCS 5/2-3.53)**

The purpose of the Academy is to maintain a statewide, regionally-based network that provides opportunities for mandated professional development for school administrators. The Academy provides high-quality training on the evaluation of certified personnel, school improvement, school accountability, public relations, communications, and pertinent leadership education relating to student growth, student achievement and school operations. By statute, every administrator must complete a minimum of one approved academy annually and a minimum of five in each administrator certificate renewal period. In conjunction with local districts, other regional offices, state-wide education related professional organizations and approved third party providers, the Kane County Regional Office of Education provides a comprehensive selection of Academy programs.

### **Administrators' Academy Offerings**

- A Framework for Understanding Poverty
- Legal Aspect of Student Records
- Harnessing the Power of Data: Effecting Improvement in Schools
- Boys & Girls ARE Different: Closing the Achievement Gap
- Technology for Administrators: How to Lead Change in the Classroom with Blogs, WIKIS & Podcasts
- Educational Technology-Learning to Use Networking Resources on the New Web
- iPods and Podcasting for Administrators: A New Way to Communicate with Your Community
- PBIS System of Support: A Focus on Secondary & Tertiary Tiers of Support
- The Future of Leadership-Technology and the School Leader
- Preparing Lead Learners For Learning Organizations: Enhancing Small Learning Communities
- Applying Brain Research to Improve Your School, Classroom and Student Achievement
- Building an Educationally Sound Master Schedule
- Building and District Strategies that Increase Academic Achievement for ELL
- Classroom Instruction That Works: The Leadership Perspective
- Concepts and Skills for Coaching New Leaders

### Administrators' Academy Offerings Continued

- Discovering Best Practice in Teacher Selection and Development
- Disruptive Student Management Training
- Educating Students with Autism Spectrum Disorder (ASD)
- Educational Technology-Learning to Use Networking Resources on the New Web
- Enhancing Learning Through Differentiated Instruction
- Establishing Response to Intervention in Middle & High Schools: A Step-by-Step Guide
- Evaluation That Enhances Professional Practices
- Expanding Your Personal Effectiveness As a Leader
- Exploring Leadership for Differentiating Schools & Classrooms
- Fifteen Things That Matter the Most in the Making of Great Principals
- Got Data? A Workshop on Early Childhood Outcomes
- Guidelines for Evaluating Special Education Staff
- IIRC - Using Assessment Results to Improve Instruction: Online Academy PSAE
- Improving Teacher Performance Through Learning-Focused Supervision
- Improving Your Math Instruction Through Teacher Evaluation 6-12
- Improving Your Math Instruction Through Teacher Evaluation K-8
- Improving Your School Security Program
- Introduction to a Framework for Teaching
- Introduction to the Evaluation of Certified Staff
- Law: The Legal Rights of Students and Parents
- Leading Schools in Culturally Diverse Settings
- Making Special Education Law Functional
- Multi-Hazard Emergency Planning of IL Schools- Creating an Action Plan
- New Admin. Institute (NAI) V: Culture & Climate & Prof. Learning Comm.
- New Admin. Institute II: Communication, Decision-Making & Vision & Leadership
- PBIS System of Support: A Focus on Secondary & Tertiary Tiers of Support
- PBIS Universal Team Training
- PBIS Workshop-Developing Your Universal System
- Quantum Learning & Leadership in Practice: A Motivated School
- Recognizing and Assisting Homeless Students: What Every Educator Needs to Know
- Recruiting, Hiring, and Retaining Quality Teachers
- RtI Best Practices: Implementing a 3-Tiered Model of Reading Interventions
- RtI Problem-Solving/FLEX
- Social Emotional Intelligence: When NCLB is Not Enough
- Supporting Reading Instruction Through Formative Supervision
- Teacher Supervision Advanced Training in the Danielson Model
- Ten Essentials for Collaborative Leadership Leading and Learning Together
- The 21 Indispensable Qualities of a Leader
- The Boss of the Whole School: Essential Leadership Skills for the New Principal
- The Legal Basis of Student Management
- Training To Select & Dev. Excellent Support Staff Employees-Advanced Phase II
- Training to Select & Develop Excellent Support Staff Employee Introduction
- Training to Select & Develop Great Administrators - An Introduction
- Training to Select & Develop Great Teachers - Advanced Phase II
- Training to Select and Develop Great Admin. Advanced Training Phase II
- Training to Select and Develop Great Teachers - Introductory
- Using ISAT Analysis to Improve Subgroup Achievement

*“No greater nor more affectionate honor can be conferred on an American than to have a public school named after him.”*

*~Herbert Hoover*



## ***Institute Day (105 ILCS 5/3-11)***

The Kane County Regional Office of Education coordinates and sponsors a countywide institute day of learning for all educators throughout the county. Teachers, paraprofessionals, health professionals and other support staff are able to select topics of interest to attend. Participants have access to the latest research-based practices and acquire new ideas and knowledge to help facilitate their work in teaching and learning.

### **Institute Offerings**

- 5 Keys to Integrating Social & Emotional Learning in the Classroom
- A Day of Discovery
- Advocacy: A Role for School Nurses
- An Arena for Success: Discovering Your Inner Strengths with Equine-Assisted Psychotherapy
- Appropriate F.O.R.C.E. in an Educational Environment
- Brain Compatible Reading/Learning Strategies for the Content Area Classroom
- Brain Gems
- Building a Foundation for Choosing & Using Strategies to Teach ELL
- Building Partnerships for America's Future
- Bullying and School Performance
- Clinics for Music Educators
- Collaboration Academy: Parents and Schools Unite
- COLLABORATION: Teambuilding, Active Listening & Problem-Solving
- Connecting Kids with Nature
- Content Area Reading Trifecta
- Differentiation through Learning Styles and Memory
- Discovering the Possibilities with Visual Strategies
- DuKane Institute Day: Getting the Word Out
- Effective School Security
- Engaging Passion with Purpose in Our Teaching of Writing
- Enhanced ISAT and PSAE Writing Scores Through Best Practices
- Explore Illinois
- Exploring Kane County Ecology
- Facilitating Deeper Comprehension of information Texts
- Government: Strategies For Engaging Students in Democratic Processes
- Helping Struggling Students: Dynamic Strategies for Content Area Teaching
- Igniting a Passion for Reading: Reaching the Reluctant Reader
- Instructional Strategies for a Cognitively and Culturally Diverse Classroom
- Literacy, Laughter and Learning
- Looking at Language Development with the SIOP Model
- Multi-Hazard Emergency Planning of IL Schools-Creating an Action Plan
- Nurturing the Teacher Within
- Particles to Prairies: Fermilab training on Illinois Habitat
- Programming for Elementary & Secondary Student on the Autism Spectrum Disorder
- Response to Intervention
- School Counseling Ethics & Relational Aggression in Students
- STARLAB Training
- Strategies for Teaching ELL Student
- Students At-Risk: From T.O.R.N. to Trans(form)ed
- Systems Thinking, Systems Changing: Vision, School Improvement and Change
- Teaching Measurement in the Elementary Grades
- The 5 Big Areas of Reading: An Interactive Adventure
- The Brain: Our Sense of Self
- The Nurtured Heart Approach for Educators
- Tools for Teaching
- Treatment for Articulation in School-Age Children
- Understanding Court Services: Probation and Juvenile Detention/Overview of Known Gangs in the Kane County Area
- What Great Teachers Do Differently
- Writing Workshop and the Traits of Good Writing

## **Other Professional Development Offerings**

### Educational Strategies and General

- An Overview of Learning Disabilities and Behavior Disorders: Characteristics & Strategies for Incarcerated Youth
- Building Employability Skills for the 21st Century (OEDP 5078)
- Literacy Symposium: Boys and Reading
- Mid-America Conference, Teaching Essential Skills in Diverse Learning Communities
- Planning Meeting

### ETC and Career Awareness

- CAHA 590: Promoting Career and Academic Readiness-PART 2: Community School Partnerships
- CAHA 590: Promoting Career & Academic Readiness in the Classroom
- OEDP 5086 Rdg Strat for CTE Content Lang
- Supervision and Administration in Literacy I EDU 6380
- Supervision and Administration in Literacy II EDU 6390 SH

### Language Arts/Reading/Writing

- Authentic Writing: Mining for Ideas from the World of Published Authors
- Reading Leaders Network Meeting
- RESPRO Coach Meeting
- Successful Strategies for Building Lifetime Readers

### Math and Science

- Integrating Agriscience, Course Number: OEDC 6182 (AgTech Tour for teachers)
- The Mathematical World (OEDC 5041)

### School Improvement

- Presentation for MS/HS Teachers

## **System of Support, RESPRO Area 1-C (Federal NCLB)**

No Child Left Behind was signed into law January 8, 2002. The overall purpose of the law is to ensure that each child in America is able to meet the high learning standards of the state where he or she lives. To help schools and districts meet this goal, the law provides a blend of requirements, incentives, and resources. State and federal law requires that technical assistance or a system of support be established by State to help schools improve academic performance.

The Kane County Regional Office has created partnerships between schools in status (not making adequately yearly progress) and The Regional Service Provider (RESPRO) Area 1-C. Through this partnership, schools are supported in establishing and sustaining learning communities, utilizing student data, alignment of curriculum to Learning Standards, and maintaining orderly and safe environments.

The Kane County ROE provides the following support to schools in status:

- materials to enhance teaching and learning
- workshops in reading and math
- curriculum mapping
- book studies on best practices
- test taking strategies
- ELL networking opportunities
- multiple intelligences and learning styles
- brain research
- leadership development
- designing formative assessments
- alternative instructional strategies
- differentiated learning strategies for the content area
- KeyTrain

During the 2008/2009 school year RESPRO coaches worked with six of the districts in designing and sustaining professional development opportunities to increase student achievement.

*“I touch the future. I teach.”*

*~ Christa McAuliffe*

### **Principal Mentoring (105 ILCS 5/2-3.53a)**

Strong educational leaders are essential to student achievement. The Illinois New Principal Mentoring Program has a commitment to strengthen school leadership by requiring mentoring of new principals. The Kane County Regional Office of Education, as the mentoring entity, has established requirements for the selection and training of experienced principals to serve as mentors throughout Kane County. Nine mentors are currently mentoring new principals in Kane County.

The role of each mentor:

- Forming supportive professional relationships with new principals
- Assisting new principals adjust to his/her new role and in developing skill as an instructional leader
- Coaching, observing, and providing feedback to the new principal on aspects of organizational management
- Identification of significant problems and issues that act as barriers to school improvement, as well as meaningful solutions
- Structure opportunities for new principal’s reflection on his/her educational practices

## **Positive Behavior Interventions and Support (PBIS)**

The 2008-09 school year was the 8<sup>th</sup> consecutive year that the PBIS project has been supported by the Kane County Regional Office of Education. PBIS is a process that 1,100 Illinois schools have put in place to help improve student behavior. Students are more likely to learn in schools where the vast majority follow school rules and respond to the efforts of the principal and teachers to improve student conduct. The Kane County Regional Office of Education provides training to teachers and administrators in Kane County schools that are interested in using the PBIS model to improve the behavior of their students.

Schools that adopt the PBIS process meet the new school standards required of all schools that are spelled out in the recent federal Individuals with Disabilities Education Act (IDEA). The IDEA law requires schools to increase their efforts to improve student behavior and academic performance in reading and math. The Regional Office of Education provides training and support for 96 schools that have adopted the PBIS model in our region. Approximately 48,000 Kane County students benefit from the PBIS process in their schools. During the past year, the ROE has provided PBIS training for 1,285 educators.

### **PBIS offerings**

- C100: New Coaches Orientation: Nuts and Bolts
- C200: Evaluation Tools, On-Line systems, and Data-Based Decision Making
- District Leadership Team Meeting D100
- Duration of Training C400
- N100: Coaches Network Meeting
- N100: SWIS/CICO Refresher Training
- PBIS N100: Coaches Network Meeting
- PBIS Overview - U50
- PBIS Secondary Interventions S100 and S200
- PBIS Secondary Interventions S200
- PBIS Workshop-Assessing Primary Interventions-Are There in Place?
- PBIS Workshop-Developing Your Universal System - U200
- PBIS Workshop-Developing Your Universal System - U100
- PBIS Workshop-Reinforcement and Theory U50
- Standard Training Course T100 Moving from Tier 2 to Tier 3
- SWIS Advanced -Training
- SWIS Facilitator Training
- SWIS Training
- U600 Tier 1/Universal New Team Mbr Training

## **Gifted Education Seminar**

The Kane County Regional Office of Education has developed and supported an ongoing gifted networking system for districts serving gifted and talented students. Gifted and talented teachers meet frequently throughout the school year at the ROE to share expertise and resources. The ROE hosts gifted training seminars for teachers throughout the school year and during the summer.

The seminar requires teachers to meet for six days (45 hours) to deepen their understanding of how to teach and reach gifted and talented students. The goal is to assist teachers in creating an environment that identifies gifted and talented students, addresses diverse needs, and measures student growth in the classroom. During the 2009-2010 school year, ongoing Gifted Education Seminar training will be offered throughout the county for teachers.

## **Educator of the Year Awards**

The 34<sup>th</sup> Annual Educator of the Year Awards Banquet was held at the Pheasant Run Resort Mega Center on May 8, 2009. This awards banquet provides an opportunity to honor outstanding members of the education profession in Kane County and promote the awareness of the quality education being provided in our schools. Special recognition is also given to those retiring from education.

Local nominating committees consisting of teachers and administrators nominate educators throughout the county. Those nominated are seen as having the respect and admiration of students, parents, and co-workers. They play active and useful roles in their communities and schools, often distinguishing themselves as leaders.

Those honored represent the dedicated service found in all of the staff throughout Kane County. This program has received enthusiastic support from regional educators, and several Kane County award recipients have been selected by the Illinois State Board of Education as outstanding teachers in Illinois.

The dinner honored 25 distinguished educators with plaques of recognition. Those who received awards of distinction were:

<u>Award Given</u>	<u>Name</u>	<u>District</u>
Educator of the Year	Deborah Perryman	District U46
Regional Superintendent Award	Dr. Bradley Hawk	District 301
Regional Superintendent Award	Dave Hatcher	District 300
R. B. Mades Associate Educator of the Year	Carrie Janes	District 131
Elementary Educator of the Year	Anna M. Richards	District 302
J.L. Hanson Middle School Educator of the Year	Michael Adams	District 131
D.L. Hoelt High School Educator of the Year	Andrew J. Johnson	District 303
Administrator of the Year	Francine Eggleston	District 302
Support Staff Award	Ruth Waite	District 301

# School Safety & Security (105 ILCS 5/3-14.20)

---

Contact Person: Douglas Johnson, Regional Superintendent, [djohnson@kaneroe.org](mailto:djohnson@kaneroe.org)  
Harrison Schneider, Associate Superintendent, [hschneider@kaneroe.org](mailto:hschneider@kaneroe.org)

## **Health and Life Safety**

All public school buildings and school-related buildings including temporary/mobile classrooms in the Kane County Regional Office of Education jurisdiction are inspected annually to assure compliance with the standards necessary to ensure the health and safety of public school students in Illinois, according to “Building Specifications for Health and Safety in Public Schools.” In 2008-2009 the ROE completed 204 HLS inspections. Annual inspection results from each building are available at the ROE. As required by law, a record of the annual inspection is sent to the president of the school board and a summary is filed annually with the State Board of Education. In addition, results from required State Fire Marshall inspections are reported through the ROE to the school districts and the state.

Every 10 years, each public building must be resurveyed for continued compliance by an architect or engineer licensed in the State of Illinois. The “Safety Survey Report” lists any items necessary to bring the building into full and continual compliance. Upon completion of outlined work, compliance is verified by the district and a licensed architect or engineer in a report filed with the ROE and the building is awarded a certificate of compliance.

The ROE is also responsible, through the Regional Superintendent of Schools, for statutory compliance with established standards in the construction, remodeling and demolition of public school buildings. The Regional Superintendent assures school board approval of construction plans, review of construction plans for code compliance, issuance of the building permit, and upon review, issuance of school occupancy permits. Further, the Regional Superintendent assures code compliance for temporary/mobile classroom units throughout the region in cooperation with licensed architects or engineers retained by local school districts. Records of all amendments and construction information are kept on file in the ROE.

## **School Health/Wellness Team**

Since early 2009, the school health/wellness team network with representation from the nine public school districts, the ROE and guests from the Kane County Health Department has met monthly during the school year to review health and wellness issues. Representatives share problems, possible solutions and resources as well as successes. Initially the network focused on identifying and listing the many different programs in the districts that impact the health and wellness of students and staff. The existence of the health/wellness team network was very helpful when concern about the H1N1 Virus, commonly known as the “Swine Flu”, emerged in the spring. The network also spent time discussing and brainstorming about involvement in the county “Fit For Kids” program.

## School Safety & Security Team

*“Children  
can’t learn if  
they are  
worried about  
their safety.”*

*~ Laura Bush*

Beginning in September 2007, the school safety/security team network, with representation from the nine public school districts, the ROE, the Kane County Sheriff’s office and the FBI, has met monthly during the school year to review school safety and security issues. Representatives share problems, possible solutions and resources as well as successes. The network focuses on making sure all students and staff members are prepared for emergency situations. The safety/security team stresses that law enforcement first responders and the administration of all schools must collaborate to prepare and practice for emergency situations. Training has been provided to address awareness and prevention practices of school safety issues.

## Facility Managers’ Network

The State of Illinois has designated the Regional Office of Education as the Authority Having Jurisdiction (AHJ) over public schools in regard to Health/Life Safety. Regional offices of education have the authority and responsibility to inspect school construction and building/facility maintenance to assure that those facilities are safe and secure for school children and staff.

The Kane County Facility Managers Network was created in September, 2008 to foster communication, cooperation and collaboration among the nine school districts and the Regional Office of Education. Attendees include school district facility managers, school district construction projects managers, architects, consultants and ROE staff. Meetings assist participants to be prepared to assure that construction projects meet all relevant codes prior to application for occupancy. The ROE conducts annual HLS inspections with facility managers and principals to assure that the maintenance of all school buildings and facilities meets code and provides a safe and secure surrounding for children and staff. All have an opportunity to learn what others are doing and participants may share procedures, resources and successes in their districts.



# Technology

---

Contact Person: Phil Morris, Director of Technology, [pmorris@kaneroe.org](mailto:pmorris@kaneroe.org)

## ***Area One West Learning Technology Center (105 ILCS 5/2-3.117)***

The Illinois State Board of Education (ISBE) established the Learning Technology Center program for the purpose of providing a coordinated, statewide support and infrastructure which assists school districts in planning for, implementing, assessing results and educating school staff in the use of technology and telecommunications in curricular, instructional and administrative functions. More information on the Learning Technology Center program can be found at <http://www.isbe.net/curriculum/elearning/default.htm>.

The Kane County Learning Technology Center has provided the following services using funding from the ISBE.

- Attending statewide meetings
- Facilitated or assisted schools with Technology Planning
- Assisted districts with funding and training for reading/math Initiatives using technology
- Provide internet safety training, including parent presentations (<http://www.isafe.org>)
- Provide technical support for connection to the Illinois Century Network (ICN) (<http://www.illinois.net>)
- Provide network consultation for the design and implementation of Local Area Networks (LANs) and Wide Area Networks (WANs)
- Help schools with the monitoring, management, and troubleshooting of their WANs
- Work with ICN Staff to assist in troubleshooting
- Assist schools with E-Rate applications to the federal government (<http://www.sl.universalservice.org>)
- Provide support and training for online resources available to all Kane County schools.

## ***Fingerprinting (105 ILCS 5/10-21.9)***

The Regional Office of Education provides fingerprinting services for all our public school districts. The Illinois School Code requires all new employees to have both a State and FBI criminal background check. During the last year, over 6,500 people were fingerprinted. In 2008, the addition of private schools occurred due to changing legislation. The electronic submission of fingerprints allows the ROE to receive results usually within a 24-hour period so a school district can begin employment immediately.

The ROE also partners with Kane County government to fingerprint all new employees for Kane County throughout the year.

### ***Geographic Information System (GIS) (105 ILCS 5/7-6)***

The Kane County Regional Office of Education (ROE) offers school districts the opportunity to request the assistance of its geographic information system (GIS). The GIS allows for the creation of custom maps and geographic analyses for school districts. GIS has already proven to be a useful tool for Kane County school districts in the matter of attendance boundaries.

The software allows a school district to calculate student populations in a geographic area. Attendance areas can be broken down, allowing for smaller geographic units of measurement and the presentation of a variety of school boundary scenarios. GIS allows school districts to create and take advantage of updatable maps to address geographic concerns. Some transportation concerns such as bus routes, bus stops, and hazardous roads can be represented in the GIS.

### ***Learning Technology Services (105 ILCS 5/2-3.118)***

In addition to being the Area One West Learning Technology Center, the Regional Office of Education integrates support and training in many areas of technology. A needs assessment is given during the year to teachers at monthly technology coordinator meetings. Monthly Technology Coordinator meetings are used to communicate information from the Illinois State Board of Education, and also allow dialogue between districts.


Learning Technology Services also provides technical support within the Regional Office of Education to maintain connectivity to the Illinois State Board of Education electronic systems including Teacher Certification and Administrators' Academy. It also continues to support the Safe Schools programs within Kane County school districts and support the technology implementation at the Kane County Juvenile Justice Center (JJC).

During this past year the following services have been provided for school districts:

- Hosting of district and private school websites
- Hosting of over 6,000 teacher email accounts
- Filtering of over 8,000 email accounts for spam and viruses
- Online Registration for workshops with digital encryption
- Digital Imaging of 180,000 records
- Professional Development Library accessible from ROE website
- Consultation for KCHRC On-Line Application
- Maintain LiveScan Fingerprint equipment for Fingerprinting of new teachers and bus drivers in Kane County
- Hosted specialized training for school districts (i.e. Tech Assessment, Blackboard, Microsoft etc.)
- Implemented Follett Destiny
- Coordinated Websense Web Filter cooperative licensing
- Coordinate United Streaming video cooperative licensing
- Maintain ROE Website, SharePoint portal, Facebook Fan Page, and Twitter pages.

## **Kane County Government Technology Workshops**

Over 90 workshops were hosted at the ROE in the Technology Lab during the past year for Kane County Government employees. The program was administered by the Information Technologies department of Kane County. Program courses ran from October 2008 through March 2009; and, offered an educational opportunity to an estimated 700 employees. The main courses offered throughout the program were fundamental, intermediate, and advanced courses in Word, Excel, PowerPoint, and Access. Adobe Acrobat Professional and Visio courses were also offered.



*“The number one benefit of information technology is that it empowers people to do what they want to do.*

*It lets people be creative.  
It lets people be productive.  
It lets people learn things  
they didn't think  
they could learn before,  
and so in a sense  
it is all about potential.”*

*~ Steve Ballmer, Microsoft*



# Transportation

---

Contact Person: *Pat Dal Santo, Director of Alternative Programs, pdalsanto@kaneroe.org*

## ***School Bus Driver Trainings (105 ILCS 5/3-14.23)***

The Regional Office of Education is responsible for conducting the initial training that is required for all new school bus drivers prior to getting a bus permit, and the annual refresher workshop that is required in the 12 month period prior to renewing his/her school bus permit. Experienced drivers must take a two hour refresher course annually, and all new drivers must take an eight hour course in school bus driver safety and first aid, as prescribed by the Illinois State Board of Education and administered by the ROE.

The ROE provided 12 Initial Bus Driver Training courses for 170 participants and 46 Refresher Trainings for over 1,100 participants.

## ***Serious Safety Hazard Route Applications (105 ILCS 29-5.2)***

The Kane County Regional Office of Education is the clearinghouse for Serious Safety Hazard Route applications. The section in the school code allows a parent/guardian to receive reimbursement for the transportation of a school child for distances of less than 1 1/2 miles when (1) walking constitutes a serious safety hazard to the safety of the pupil as determined by the Illinois Department of Transportation (IDOT), and (2) such pupil does not have access to transportation to and from school provided entirely at public expense. The parent/guardian must file an application for each school in which they have a pupil attending when such school is less than 1 1/2 miles from their residence.

Parents submit applications for a Serious Safety Hazard to the ROE. These are forwarded to IDOT which reviews the seriousness of three potentially dangerous conditions a child may encounter while walking to school: 1) walking on or beside a highway without sidewalks, 2) crossing a roadway, and/or 3) crossing railroad tracks.

**Pupil Transportation- July 1, 2008 – June 30, 2009**

**Pupil Transportation July 1, 2008-June 30, 2009**

<u>District</u>	<u>Average Number of Regular Transportation pupils Transported Per Year</u>	<u>Transportation Miles</u>					<u>Direct Costs</u>				
		<u>Regular</u>	<u>Vocational</u>	<u>Special Ed</u>	<u>Non-reimbursable</u>	<u>Total</u>	<u>Regular</u>	<u>Vocational</u>	<u>Special Ed</u>	<u>Non-reimbursable</u>	<u>Total</u>
U46 ELGIN	23,477.00	3,158,393	0	2,721,107	490,778	6,370,278	11,734,225	0	9,932,568	1,792,272	23,459,065
101 BATAVIA AURORA	3,430.51	236,001	13,120	457,740	40,965	747,826	958,011	53,025	2,047,825	166,796	3,225,657
129 WEST AURORA	5,070.59	589,923	0	546,318	57,732	1,193,973	3,659,719	0	2,469,590	599,837	6,729,146
131 EAST	0.00	0	0	819,192	1,371	820,563	0	0	3,073,049	5,143	3,078,192
300 DUNDEE	11,906.00	1,669,300	0	1,058,893	350,122	3,078,315	7,842,782	0	5,024,856	1,593,486	14,461,124
301 CENTRAL	2,905.98	464,822	33,373	237,072	44,757	780,024	1,795,076	125,237	903,181	167,946	2,991,440
302 KANELAND	3,796.31	537,664	0	485,574	29,661	1,052,899	2,187,749	0	1,370,943	118,783	3,677,475
303 ST CHARLES	10,341.91	1,176,058	61,314	464,727	199,737	1,901,836	3,984,615	202,333	2,275,394	382,749	6,845,091
304 GENEVA	5,453.00	456,776	17,490	352,105	77,331	903,702	3,621,126	35,944	1,000,582	25,680	4,683,332
<b>TOTAL 2008-2009</b>	<b>66,381.30</b>	<b>8,288,937</b>	<b>125,297</b>	<b>7,142,728</b>	<b>1,292,454</b>	<b>16,849,416</b>	<b>35,783,303</b>	<b>416,539</b>	<b>28,097,988</b>	<b>4,852,692</b>	<b>69,150,522</b>

\*Information can be found at Illinois State Board of Education Website/Pupil Transportation Claim Reimbursement\*

# Finance Reports

Contact Person: Tom Campeggio, Director of Finance, [tcampeggio@kaneroe.org](mailto:tcampeggio@kaneroe.org)

## Assessed Valuation Per ADA – School Property – Bonded Indebtedness

### FINANCE REPORT ASSESSSED VALUATION PER ADA - SCHOOL PROPERTY - BONDED INDEBTEDNESS

					ORIGINAL COST			% OF BONDING POWER USED	
		ASSESSED VALUATION	ASSESSED VALUATION PER FY08 ADA	TOTAL SCHOOL TAX RATE	OF PROPERTY & EQUIPMENT AS OF 6-30-08	BONDED INDEBTEDNESS AS OF 6-30-08	BONDED INDEBTEDNESS AS OF 6-30-09	PCT CHG	AS OF 6-30-09
DISTRICT		FY2008							
U46	ELGIN	5,980,125,941	162,980	4.5220%	567,553,086	339,318,830	316,460,991	-6.7%	41.1%
101	BATAVIA	1,345,129,897	223,628	4.4539%	86,279,898	113,455,000	161,013,363	41.9%	61.1%
129	AURORA WEST	1,901,879,201	167,406	3.9743%	114,022,002	126,811,000	121,716,000	-4.0%	48.3%
131	AURORA EAST	982,808,849	87,177	2.7970%	158,620,107	76,641,536	107,069,448	39.7%	56.5%
300	DUNDEE	3,809,461,112	210,081	4.5827%	340,128,852	266,493,822	313,184,496	17.5%	50.7%
301	CENTRAL	699,255,567	239,753	4.2188%	100,349,464	50,356,411	48,732,792	-3.2%	52.2%
302	KANELAND	898,584,664	220,880	4.2460%	119,855,791	103,829,834	114,417,497	10.2%	83.7%
303	ST CHARLES	3,456,031,900	275,082	3.6157%	244,107,042	165,445,000	155,855,000	-5.8%	34.7%
304	GENEVA	1,485,045,968	266,884	3.9794%	166,583,560	172,020,266	349,986,635	103.5%	83.9%
TOTAL FY2009		20,558,323,099	189,324	---	1,897,499,802	1,414,371,699	1,688,436,222	19.4%	49.9%
TOTAL FY2008		19,294,158,815	181,374	---	1,760,004,922	---	---	8.9%	48.8%
TOTAL FY2007		17,731,921,157	171,096	---	1,641,247,647	---	---	7.3%	49.4%
TOTAL FY2006		16,069,855,366	160,236	---	1,453,114,151	---	---	-15.4%	64.5%
TOTAL FY2005		14,531,228,055	146,790	---	1,508,395,145	---	---	30.6%	54.6%
TOTAL FY2004		13,280,610,126	131,772	---	1,408,405,075	---	---	3.0%	58.0%

**Certified Personnel**

DISTRICT	DEGREES - SALARIES - EXPERIENCE - STAFF/STUDENT RATIOS						AVG. SAL. FULL-TIME CERTIFIED TEACHERS	%	AVG. SAL. CERTIFIED ADMIN
	TOTAL CERTIFIED (INCLUDE PART-TIME)	DOCTOR'S & ED SPEC/CAS DEGREE	MASTER'S DEGREE	BACHELOR'S DEGREE	TEACHERS AIDES (INCLUDE PART-TIME)				
<b>U46 ELGIN</b>	2806	54	1313	1439	379	\$58,486	9%	\$99,931	
<b>101 BATAVIA</b>	475	12	343	120	108	\$67,270	0%	\$101,410	
<b>129 AURORA WEST</b>	882	12	615	255	190	\$65,570	9%	\$95,734	
<b>131 AURORA EAST</b>	1328	15	518	795	252	\$50,165	0%	\$88,302	
<b>300 DUNDEE</b>	1423	37	960	426	401	\$53,533	5%	\$96,302	
<b>301 CENTRAL</b>	275	6	158	111	44	\$61,294	9%	\$109,504	
<b>302 KANELAND</b>	391	9	255	127	78	\$52,696	0%	\$92,780	
<b>303 ST CHARLES</b>	1128	24	721	383	337	\$59,097	8%	\$100,036	
<b>304 GENEVA</b>	457	15	366	76	136	\$65,481	1%	\$106,753	
% = TRS AMOUNT PAID BY DISTRICT						# TRS PAYMENT VARIES			
<b>TOTAL FY2009</b>	<b>9165</b>	<b>184</b>	<b>5249</b>	<b>3732</b>	<b>1925</b>	<b>\$59,288</b>		<b>\$98,972</b>	
		2.01%	57.27%	40.72%	21.00%				
<b>TOTAL FY2008</b>	<b>9012</b>	<b>172</b>	<b>5533</b>	<b>3307</b>	<b>1898</b>	<b>\$56,768</b>		<b>\$95,781</b>	
		1.91%	61.40%	36.70%	21.06%				



**Certified Personnel Continued**

DISTRICT	AVG. YRS. EXPERIENCE TEACHING IN ILLINOIS	ENROLLMENT PER CERTIFIED STAFF MEMBER FY2009	ENROLLMENT PER CERTIFIED STAFF MEMBER FY2008	TEACHER TO ADMINISTRATIVE STAFF RATIO	SUPPORT STAFF	ENROLLMENT TO SUPPORT STAFF RATIO	ENROLLMENT PER FALL HOUSING RPT FY2009
<b>U46 ELGIN</b>	12.0	14.6	14.5	17.8	1,951	21.0	40,989
<b>101 BATAVIA</b>	13.0	13.1	13.5	19.8	101	61.5	6,215
<b>129 AURORA WEST</b>	8.8	14.1	14.6	12.1	278	44.8	12,451
<b>131 AURORA EAST</b>	8.5	10.1	10.2	27.1	203	66.3	13,453
<b>300 DUNDEE</b>	10.3	14.0	14.8	25.4	450	44.1	19,867
<b>301 CENTRAL</b>	10.7	11.8	12.1	22.9	191	17.0	3,254
<b>302 KANELAND</b>	10.3	11.7	11.7	18.6	185	24.8	4,586
<b>303 ST CHARLES</b>	9.3	12.2	12.5	16.8	434	31.8	13,808
<b>304 GENEVA</b>	12.0	13.1	13.3	20.8	260	23.1	6,006
<b>Average</b>	<b>10.5</b>	<b>12.8</b>	<b>13.0</b>	<b>20.1</b>	<b>4,053</b>	<b>37.2</b>	<b>120,629</b>
<b>PRIOR YEAR</b>	<b>10.4</b>	<b>13.0</b>	<b>14.4</b>	<b>19.6</b>	<b>4,291</b>	<b>38.5</b>	<b>119,928</b>

**Classroom Buildings In Use – July 1, 2008 – June 30, 2009**

**CLASSROOM BUILDINGS IN USE - 7/1/08 - 6/30/09**

DISTRICT		Elementary School		Middle or Junior High School		Senior High School		Mobile Classroom		Other, Special Ed, Voc Ed, Etc.	
		FY09	FY08	FY09	FY08	FY09	FY08	FY09	FY08	FY09	FY08
		U46	ELGIN	40	40	8	8	5	5	64	63
101	BATAVIA	6	6	1	1	1	1	0	8	1	1
129	AURORA WEST	11	11	4	4	1	1	16	6	2	3
131	AURORA EAST	12	12	3	3	1	1	0	0	5	5
300	DUNDEE	17	17	4	4	3	3	18	22	2	2
301	CENTRAL	4	4	2	2	1	1	0	0	0	0
302	KANELAND	4	4	1	1	1	1	3	11	1	1
303	ST CHARLES	12	12	3	3	2	2	5	30	0	1
304	GENEVA	5	5	2	2	1	1	0	0	0	0
<b>TOTAL</b>		<b>111</b>	<b>111</b>	<b>28</b>	<b>28</b>	<b>16</b>	<b>16</b>	<b>106</b>	<b>140</b>	<b>16</b>	<b>19</b>

**Public School Enrollment – September 2008**

**FY09 Enrollment  
Enrollment - Public Schools - September 2008**

District	School	FY08	FY09	Pre-K	K-5	6-8	9-12
U46	Elgin	40,709	40,989	1,315	18,506	9,174	11,994
101	Batavia	6,337	6,215	72	2,766	1,503	1,874
129	West Aurora	12,579	12,451	424	5,820	2,801	3,406
131	East Aurora	13,347	13,453	866	6,865	2,825	2,897
300	Dundee	19,594	19,867	717	9,049	4,362	5,739
301	Central	3,154	3,254	36	1,421	807	990
302	Kaneland	4,409	4,586	65	2,244	1,067	1,210
303	St. Charles	13,787	13,808	126	6,125	3,282	4,275
304	Geneva	6,012	6,006	45	2,590	1,431	1,940
<b>TOTAL FY09</b>			<b>120,629</b>	<b>3,666</b>	<b>55,386</b>	<b>27,252</b>	<b>34,325</b>
<b>TOTAL FY08</b>			<b>119,928</b>	<b>3,106</b>	<b>55,627</b>	<b>27,494</b>	<b>33,701</b>

**ISBE Federal & State Revenue – Fiscal Year Ending June 30, 2009**

**ISBE FEDERAL & STATE REVENUE  
FISCAL YEAR ENDING JUNE 30, 2009**

		<b>STATE AID *</b>	<b>STATE - OTHER</b>	<b>FEDERAL</b>	<b>TOTAL</b>	<b>\$ PER ADA</b>
U46	ELGIN	69,713,879	41,993,115	23,742,760	135,449,754	3,764
101	BATAVIA	3,130,187	3,705,267	524,777	7,360,231	1,278
129	AURORA WEST	29,543,656	15,801,791	9,418,222	54,763,669	4,898
131	AURORA EAST	54,750,333	13,707,284	14,717,602	83,175,219	7,533
300	DUNDEE	18,412,716	22,515,990	11,314,416	52,243,122	2,932
301	CENTRAL	2,467,988	3,463,702	182,241	6,113,931	2,111
302	KANELAND	3,418,698	4,771,992	434,553	8,625,243	2,149
303	ST CHARLES	5,003,048	10,021,168	1,289,648	16,313,864	1,316
304	GENEVA	2,255,555	5,470,344	361,778	8,087,677	1,476
	<b>TOTAL FY2009</b>	<b>188,696,060</b>	<b>121,450,653</b>	<b>61,985,997</b>	<b>372,132,710</b>	<b>3,492</b>
	<b>TOTAL FY2008</b>	<b>177,338,042</b>	<b>124,226,113</b>	<b>56,675,328</b>	<b>358,239,483</b>	<b>3,434</b>
	<b>CHANGE</b>	<b>6.0%</b>	<b>-2.3%</b>	<b>8.6%</b>	<b>3.7%</b>	<b>1.7%</b>

\* State Aid numbers contain the Federal Stimulus amounts from the A.R.R.A.

\*\* Additional Financial and District information may be obtained at [www.isbe.net](http://www.isbe.net)

# FY09 Annual Report Index

<b>A</b>		Kane Kares..... 19
Area One West Learning Technology Center..... 30		Kane ROE Equal Chance Program..... 16
Assessed Valuation Per ADA..... 35		
Association for Individual Development (AID)..... 20		
<b>B</b>		<b>L</b>
Budget – County Portion ..... 13		Learning Technology Services ..... 31
Business Office..... 13		Legal Reference ..... 7
<b>C</b>		Legislative Development of the Office ..... 7
Career and Technical Education Partnership..... 18		
Career Cruising..... 18		<b>M</b>
Certification ..... 15		Master/Doctorate Degree Programs..... 19
Certified Personnel ..... 36, 37		Mission ..... 4
Classroom Buildings In Use ..... 38		
<b>D</b>		<b>N</b>
Dropout Intervention Program ..... 12		Networks ..... 17
<b>E</b>		
Educator of the Year Awards ..... 27		<b>O</b>
<b>F</b>		Operation Snowball..... 19
Facility Managers’ Network ..... 29		Organizational Chart ..... 6
Finance Reports ..... 35		Other Professional Development Offerings ..... 24
Fingerprinting ..... 30		
<b>G</b>		<b>P</b>
Gang Task Force..... 20		Partnerships ..... 18
General Educational Development (GED)..... 11		Positive Behavior Interventions and Support (PBIS)..... 26
Geographic Information System (GIS) ..... 31		Principal Mentoring ..... 25
Gifted Education Seminar ..... 27		Professional Development ..... 21
Government Technology Workshops ..... 32		Public School Enrollment..... 38
<b>H</b>		Pupil Transportation..... 34
Health and Life Safety..... 28		
Home Schooling..... 12		<b>R</b>
Homeless Education ..... 16		Regional Board of School Trustees..... 7
Homeless Education Program..... 16		Regional Safe Schools Program (RSSP)..... 11
<b>I</b>		Regional Superintendents of Schools..... 9
Illinois Administrators’ Academy ..... 21		
Institute Day ..... 23		<b>S</b>
Institute Fund Report..... 14		School Bus Driver Trainings ..... 33
ISBE Federal & State Revenue ..... 39		School District Boundary Map..... 5
<b>J</b>		School District Information ..... 4
Juvenile Justice Center..... 12		School Health/Wellness Team ..... 28
<b>K</b>		School Safety & Security..... 28
Kane County Human Resources Consortium (KCHRC) ..... 18		School Safety & Security Team..... 29
		Serious Safety Hazard Route Applications ..... 33
		Spelling Bee ..... 20
		Superintendent of Educational Service Region ..... 8
		System of Support, RESPRO Area 1-C..... 24
		<b>T</b>
		Technology ..... 30
		Transportation..... 33
		Truancy Prevention/Intervention Program ..... 10