

Kane County Regional Office of Education



2009-2010 Annual Report

Douglas E. Johnson, Regional Superintendent
Harrison Schneider, Associate Superintendent



210 South 6th St, Geneva IL
www.kaneroe.org
630-232-5955

**KANE COUNTY
REGIONAL OFFICE OF EDUCATION**

DOUGLAS E. JOHNSON
Regional Superintendent
HARRISON SCHNEIDER
Associate Superintendent



210 S. Sixth Street
Geneva, IL. 60134
Phone: 630-232-5955
Fax: 630/208-5115
www.kaneroe.org

**Regional Office of Education
Fiscal Year 2010 Annual Report**

As Superintendent of the Kane County Regional Office of Education, Kane County, Illinois, I hereby submit the annual report of the activities of this office from July 1, 2009 through June 30, 2010.

This report is an overview and is not inclusive of all the services and collaborative partnerships the Regional Office of Education provides as an educational leader for the benefit of the schools and citizens of Kane County. This report uses information from end of year reports of our programs and services and from end of year school reports from the Illinois State Board of Education website to make this Annual Report as comprehensive as possible. We hope it will help you better understand the work our office and the educators of Kane County provide to ensure our schools are safe and nurturing places of learning where all people, young and old alike, are valued and respected.

Respectfully submitted,

Douglas E. Johnson
Regional Superintendent of Schools
Kane County Regional Office of Education

Table of Contents

TABLE OF CONTENTS	2
THE MISSION.....	4
KANE COUNTY SCHOOL DISTRICT INFORMATION.....	4
KANE COUNTY SCHOOL DISTRICT BOUNDARY MAP.....	5
KANE COUNTY REGIONAL OFFICE OF EDUCATION	6
ORGANIZATIONAL CHART.....	6
LEGISLATIVE	7
LEGAL REFERENCE FOR ANNUAL REPORT	7
LEGISLATIVE DEVELOPMENT OF THE OFFICE.....	7
REGIONAL BOARD OF SCHOOL TRUSTEES	7
SUPERINTENDENT OF EDUCATIONAL SERVICE REGION	8
REGIONAL SUPERINTENDENTS OF SCHOOLS	9
ALTERNATIVE PROGRAMS	10
TRUANCY PREVENTION/INTERVENTION PROGRAM (105 ILCS 5/3-13).....	10
REGIONAL SAFE SCHOOLS PROGRAM (RSSP) (105 ILCS 5/13 A-8)	11
GENERAL EDUCATIONAL DEVELOPMENT (GED) (105 ILCS 5/3-15.12)	11
JUVENILE JUSTICE CENTER (105 ILCS 5/14-7.03)	12
HOME SCHOOLING (105 ILCS 5/26-1)	12
DROPOUT INTERVENTION PROGRAM	12
BUSINESS OFFICE.....	13
BUDGET – COUNTY PORTION	13
INSTITUTE FUND REPORT (105 ILCS 5/3-12)	14
CERTIFICATION (105 ILCS 5/21).....	15
HOMELESS EDUCATION PROGRAM.....	16
KANE ROE EQUAL CHANCE PROGRAM.....	16
(FEDERAL,SUBTITLEB OF TITLE VII, MCKINNEY-VENTO HOMELESS ASSISTANCE ACT 42 U.S.C.11431 ET SEQ)	16
NETWORKS	17
PARTNERSHIPS	18
CAREER CRUISING	18
CAREER AND TECHNICAL EDUCATION PARTNERSHIP	18
KANE COUNTY HUMAN RESOURCES CONSORTIUM (KCHRC)	18
MASTER/DOCTORATE DEGREE PROGRAMS	19
OPERATION SNOWBALL.....	19
16TH CIRCUIT COURT GANG TASK FORCE	20
SPELLING BEE	20
ASSOCIATION FOR INDIVIDUAL DEVELOPMENT (AID)	20
PROFESSIONAL DEVELOPMENT (105 ILCS 5/3-14.6-9).....	21
ILLINOIS ADMINISTRATORS’ ACADEMY (105 ILCS 5/2-3.53).....	22
INSTITUTE DAY (105 ILCS 5/3-11)	23
OTHER PROFESSIONAL DEVELOPMENT OFFERINGS.....	24
GIFTED EDUCATION SEMINAR.....	25
EDUCATOR OF THE YEAR AWARDS	25

POSITIVE BEHAVIOR INTERVENTIONS AND SUPPORT (PBIS)	26
PRINCIPAL MENTORING (105 ILCS 5/2-3.53A)	27
READING FIRST	27
SYSTEM OF SUPPORT, RESPRO AREA 1-C (FEDERAL NCLB)	28
SCHOOL SAFETY & SECURITY (105 ILCS 5/3-14.20).....	29
HEALTH AND LIFE SAFETY	29
SCHOOL HEALTH/WELLNESS TEAM	29
SCHOOL SAFETY & SECURITY TEAM	30
FACILITY MANAGERS' NETWORK	30
TECHNOLOGY	31
AREA ONE WEST LEARNING TECHNOLOGY CENTER (105 ILCS 5/2-3.117).....	31
FINGERPRINTING (105 ILCS 5/10-21.9)	31
GEOGRAPHIC INFORMATION SYSTEM (GIS) (105 ILCS 5/7-6)	32
LEARNING TECHNOLOGY SERVICES (105 ILCS 5/2-3.118)	32
TRANSPORTATION	33
SCHOOL BUS DRIVER TRAININGS (105 ILCS 5/3-14.23)	33
SERIOUS SAFETY HAZARD ROUTE APPLICATIONS (105 ILCS 29-5.2)	33
PUPIL TRANSPORTATION- JULY 1, 2009 – JUNE 30, 2010	34
FINANCE REPORTS.....	35
CERTIFIED PERSONNEL	35
CERTIFIED PERSONNEL CONTINUED	36
CLASSROOM BUILDINGS IN USE – JULY 1, 2009 – JUNE 30, 2010	37
PUBLIC SCHOOL ENROLLMENT – SEPTEMBER 2009	37
ISBE FEDERAL & STATE REVENUE – FISCAL YEAR ENDING JUNE 30, 2010	38
FY10 ANNUAL REPORT INDEX	39

The Mission

The mission of the Kane County Regional Office of Education is to serve as an advocate for education by providing collaborative leadership, performing regulatory functions as directed in the [Illinois School Code](#) and in partnership with the Illinois State Board of Education, providing access to educational resources to facilitate learning, and disseminating information for educators, school districts, and the community.

Kane County School District Information

School District U-46

Dr. Jose Torres, Superintendent
355 E. Chicago Street,
Elgin, IL 60120
Phone: 847-888-5000
www.u-46.org

School District 101

Dr. Jack Barshinger, Superintendent
335 W. Wilson Street
Batavia, IL 60150
Phone: 630-937-8800
www.bps101.net

School District 129

Dr. James Rydland, Superintendent
Box 4430, 80 S. River Street
Aurora, IL 60506
Phone: 630-301-5000
www.sd129.org

School District 131

Dr. Jerome Roberts, Superintendent
417 Fifth Street
Aurora, IL 60505
Phone: 630-299-5550
www.d131.org

School District 300

Dr. Kenneth Arndt, Superintendent
300 Cleveland Avenue
Carpentersville, IL 60110
Phone: 847-426-1300
www.d300.org

School District 301

Dr. Todd Stirn, Superintendent
275 South Street, Box 396
Burlington, IL 60109
Phone: 847-464-6005
www.burlington.k12.il.us

School District 302

Dr. Charles McCormick, Superintendent
47W326 Keslinger Road
Maple Park, IL 60151
Phone: 630-365-5111
www.kaneland.org

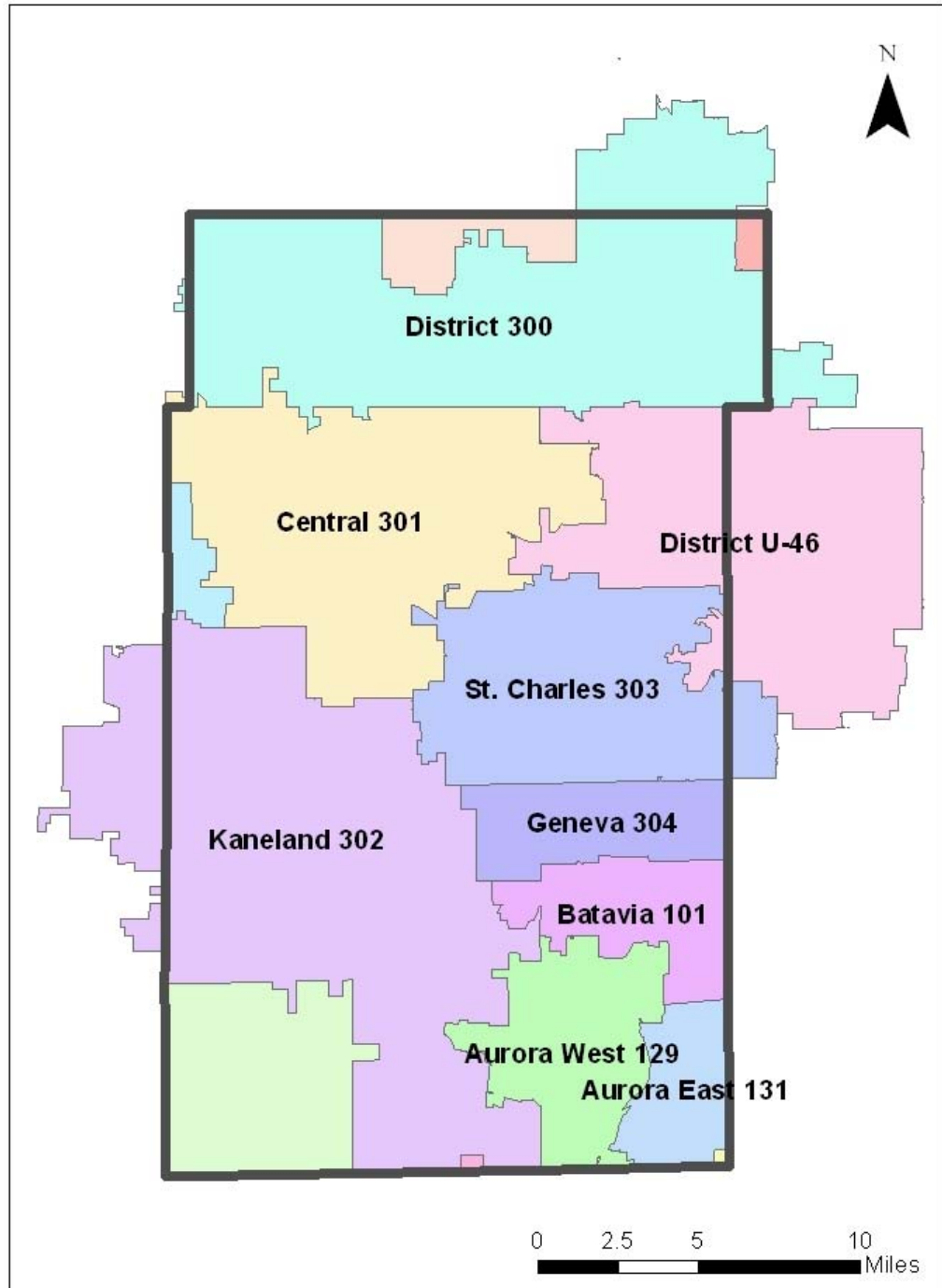
School District 303

Dr. Donald Schlomann, Superintendent
201 South 7th Street
St. Charles, IL 60174
Phone: 630-513-3030
www.d303.org

School District 304

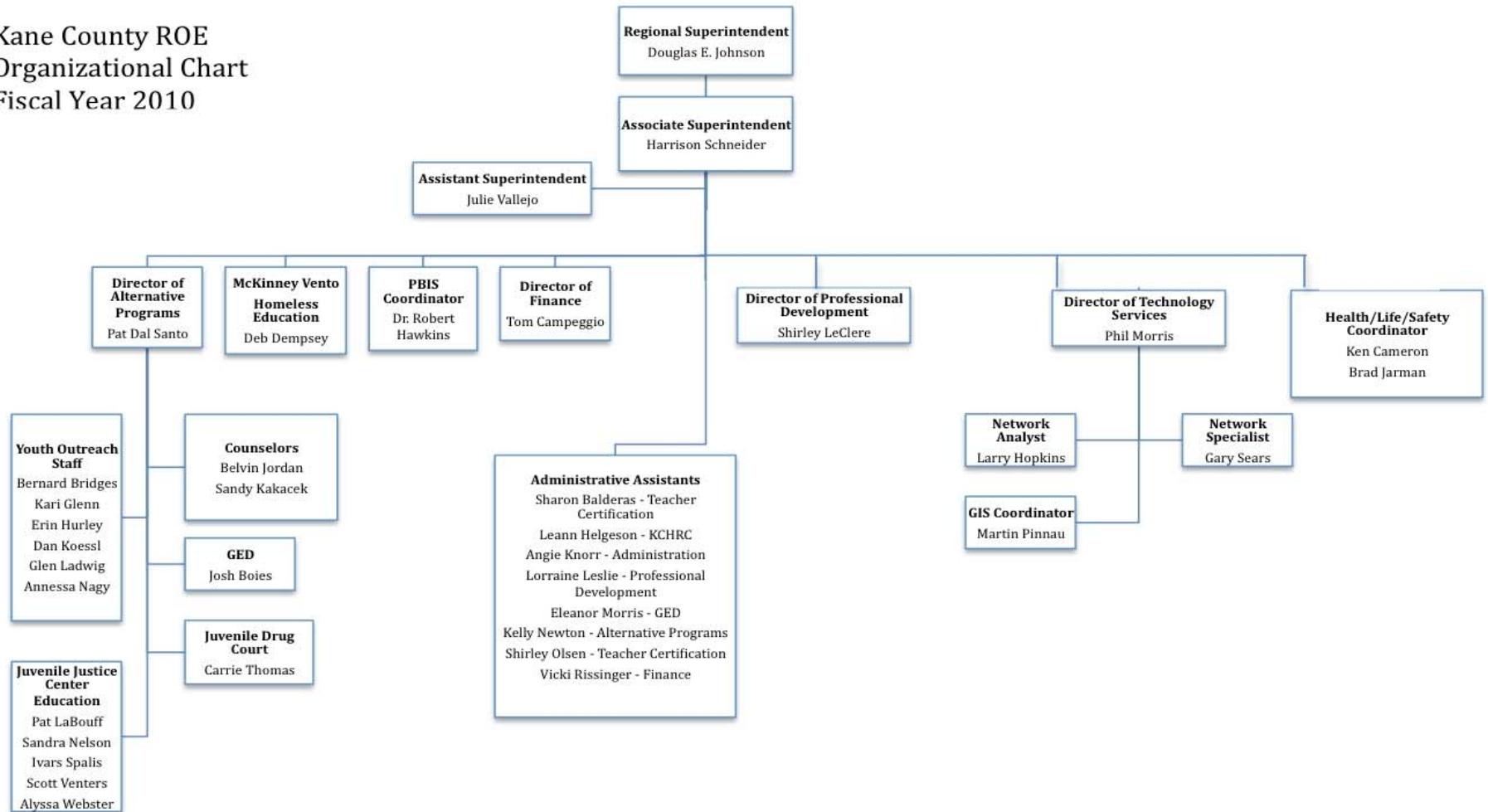
Dr. Kent Mutchler, Superintendent
227 North Fourth Street
Geneva, IL 60134
Phone: 630-463-3000
www.geneva304.org

Kane County School District Boundary Map



Kane County Regional Office of Education Organizational Chart

Kane County ROE
Organizational Chart
Fiscal Year 2010



Legislative

Contact Person: Douglas Johnson, Regional Superintendent, djohnson@kaneroe.org

Legal Reference for Annual Report

This annual report is designed in part to meet the provisions of Chapter 105, Article 3, Sections 5/3-5, 5/3-6 and 5/3-15.8 of the School Code of Illinois. The report of schools visited and other official acts, meetings and activities of the office are provided to the Public Service Committee of the Kane County Board at regular monthly meetings.

Legislative Development of the Office

- 1829 The sixth General Assembly mandated appointment of a Commissioner of School Lands.
- 1841 Title changed to County Commissioner and Ex-Officio County Superintendent of Schools.
- 1865 Legislature called for the election of the County Superintendent of Schools.
- 1973 Consolidation of smaller counties resulted in 78 regions.
- 1975 Title of Chief Administrative Officer of an education service region changed to Regional Superintendent of Schools.
- 1977 Further consolidation resulted in 57 regions in Illinois.
- 1993 Educational Service Region office renamed Regional Office of Education.
- 1995 Further consolidation resulted in 45 regions, each with a population of at least 45,000 inhabitants.

Regional Board of School Trustees

The Regional Board of School Trustees is an elected body with the sole responsibility of action on detachment/annexation petitions regarding boundary changes between school districts in the region. The board meets on the first Monday of January, April, July and October. Meetings may be canceled due to lack of agenda items. Douglas Johnson, Regional Superintendent, is the ex-officio Secretary for the Board of Trustees.

The members of the Regional Board of School Trustees are:

Penny Wegman, President	Elgin Township	Term Exp. 2011
G. Michael Stoffa, Vice President	Blackberry Township	Term Exp. 2011
Chad Koppie	Rutland Township	Term Exp. 2013
Mary Shepro	St. Charles Township	Term Exp. 2013
Juan Sifuentes	Aurora Township	Term Exp. 2015
Stephen R. Wallace	Sugar Grove Township	Term Exp. 2015
Kevin Williams	Geneva Township	Term Exp. 2013

Superintendent of Educational Service Region

The act of Congress which admitted Illinois to the Union in 1818 set aside the sixteenth section of every township for the use of schools. In 1819, therefore, the General Assembly directed the county commissioners' court in each county to appoint three trustees from each township. These trustees, whose terms ran for four years, were charged with hiring a surveyor, laying out section 16 into lots, leasing those lots for no more than a ten year period, and appointing a clerk and treasurer to handle the leases. In 1827 this was modified to give the trustees responsibility for laying out school districts within the township. These districts were to contain no fewer than 18 scholars, and the trustees were to hire a teacher for the district.

The situation changed in 1829, when Congress agreed to permit the sale of section 16 lands. For the first time, the county commissioners' court could appoint a commissioner and agent for the county school lands. This position was the predecessor of the Regional Superintendent of Schools. The commissioner was required to prepare a record of the school lands in the county. When nine-tenths of the voters in any township decided to sell their school lands, they were required to petition the commissioner in writing. In turn, he arranged the sale, and loaned the money from the sale back to the township.

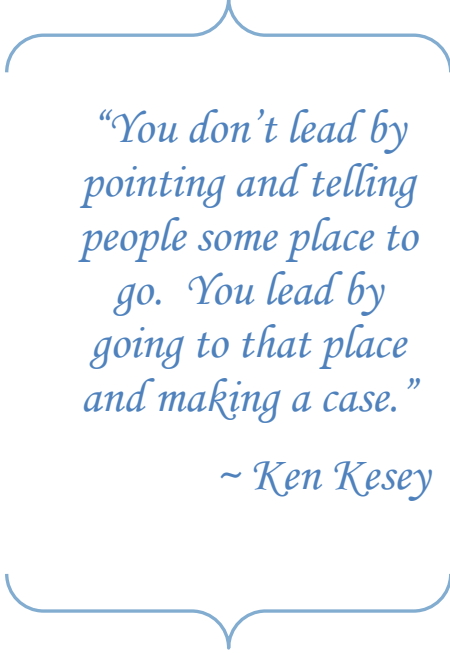
During the 1830's, minor changes were made in the school law. The percentage of voters required to sign a petition for sale of school lands was reduced and the county commissioners' court again appointed township school trustees. Most important, in 1837 the citizens of a township were given the choice of incorporating for the purpose of establishing and supporting common schools. The trustees were assigned the superintendence of the township schools, and they could appoint a clerk, who would also act as treasurer.

The school land commissioner was required to pay to this treasurer all of the money in his care which belonged to the township, and would deliver to him all bonds, notes, and mortgages. The township treasurer made an abstract, in return, which showed the name of each teacher, the number of scholars at each school, and the total number of days taught. The treasurer was to deliver this abstract to the school land commissioner and receive the interest due the township from the state's school, college, and seminary lands.

In 1841, the office of school commissioner became elective, for a term of two years. This same year, each school district was required to elect a board of three school directors, also for two-year terms. The school directors were empowered to select building sites, build schools, employ teachers, and visit the district schools. In townships which had not chosen to incorporate, the trustees of school lands could appoint school directors if none were elected.

The school law was under continual revision during the 1840's, and in 1845 the school commissioner was made *ex officio* county superintendent of the common schools. His duties included visiting the schools, examining teachers, and issuing certificates. By 1865, each county elected a superintendent of schools every four years. Township school trustees reported to this superintendent on the number of schools, the number of scholars, the number of male and female teachers, the compensation of teachers, the number of persons under age 21 in the township, the principal and interest of the township fund, the amount of the common school fund received by the treasurer, the amount raised by taxation, all other receipts and expenditures, and any other information required by the superintendent.

Most of the original regulatory duties as mandated by Illinois School Law remain the responsibility of the Regional Superintendent of Schools like registering educators' certificates, approving and conducting teacher institutes, handling school lands, visiting schools, and examining the accounts of all school treasurers in the county. But over the last



“You don’t lead by pointing and telling people some place to go. You lead by going to that place and making a case.”

~ Ken Kesey

century many more mandated duties and responsibilities of the office have been added. For example in the area of certification, before a certificate can be re-registered, every individual professional development activity in the educator's required professional growth plan must be reviewed and approved as part of the rigorous re-certification process. Every new school employee is now fingerprinted and a criminal background check is conducted in partnership with the Illinois State Police and the FBI.

While the world has seen vast changes over the last century, the Regional Office of Education remains committed to providing quality service and performing its mandated functions. The Regional Office of Education remains dedicated to ensuring every child and citizen has the educational opportunity to achieve success.

Regional Superintendents of Schools

R.B. “Bink” Makes	Prior to 1975
James L. Hanson	1975 – 1987
Dr. Douglas L. Hoeft	1987 – 1992
Dr. Clem Mejia	1993 – 2007
Douglas E. Johnson	2007 - Present

Alternative Programs

Contact Person: Pat Dal Santo, Director of Alternative Programs, pdalsanto@kaneroe.org

Truancy Prevention/Intervention Program (105 ILCS 5/3-13)

In 2009 – 2010 the Regional Office of Education completed the 25th year of the Kane County Truancy Prevention Program. Youth Outreach Workers (truancy officers) collaborate with schools to advocate for students and parents to ensure consistent school attendance.

Kane County had 1773 “official” referrals from our local schools requesting truancy assistance from our staff. The services provided during the 2009 – 2010 year were the following:

Services	2009 – 2010
School Visits	2,767
Home Visits	573
Student Contacts	2,038
Community Agency Contacts	239
School Conferences	309
Regional Conferences	23
Classroom Prevention Presentations	50
Juvenile Court Cases	20
Adult Court Cases	8

Source of Referrals by District	2009 – 2010
U46 Elgin	618
101 Batavia	7
129 West Aurora	303
131 East Aurora	590
300 Dundee/Carpentersville	178
301 Central	2
302 Kaneland	10
303 St. Charles	37
304 Geneva	13
Other	15
By Grade Level	
Elementary K – 5	547
Middle School	479
High School	747
Other	0
By Gender	
Males	937
Females	836

Regional Safe Schools Program (RSSP) (105 ILCS 5/13 A-8)

The Regional Safe Schools Program serves expulsion-eligible and/or multiply suspended students. The statewide program, authorized through the Regional Offices of Education, began serving students in 1996 as established by the Illinois School Code to provide a system of alternative education programs for disruptive students. The purpose of the RSSP is twofold: 1) to increase safety and promote the learning environment in schools and 2) to meet the particular educational needs of disruptive students more appropriately and individually in an alternative educational environment. This is a cooperative effort between the Regional Office of Education and the local school districts. The programs within school districts are designed to meet local needs. In 2009-2010 two hundred students were served through this program. Without this program those students would not have received an education and would have most likely become dropouts.

General Educational Development (GED) (105 ILCS 5/3-15.12)

General Educational Development (or GED) tests are a group of five subject tests which (when passed) certify that the taker has high school-level academic skills. To pass the GED Tests and earn a GED credential, test takers must score higher than 40 percent of graduating high school seniors nationwide. In addition they must pass the Constitution test.

The Regional Superintendent is delegated with the responsibility of administering the G.E.D. testing program in accordance with the Illinois School Code. This program allows those who are 17 years of age or older to secure a High School Equivalency Certificate upon completing and passing all tests.

Testing centers have been established in Kane County at the Regional Office of Education in Geneva, Elgin Community College in Elgin and Waubensee Community College in Aurora. Tests are administered on Saturdays and require at least 3 Saturdays to complete the battery. The Kane County Regional Office of Education is an official scoring center with equipment for scanning and scoring all tests except the essay portion. A \$50.00 fee is charged to cover the cost of tests, administration of tests, grading, and the certificate.

Highlights of the 2009-2010 GED Testing Program include:

- 1,304 first time test takers
- 740 GEDs issued (completed the battery and met score requirements)
- 1,558 GED tests given (total number of unique persons who tested)
- Registered 1,167 first time test-takers
- Issued 564 original GED diplomas
- Processed over 700 Transcripts and Employer Verifications
- Registered, scheduled, and tested over 1,500 unique individuals at ROE approved test sites

Juvenile Justice Center (105 ILCS 5/14-7.03)

To guarantee that students in juvenile detention continue to be educated and make a successful transition back into their public school program, the Kane County Regional Office of Education runs the Kane County Juvenile Justice Center Education Program. An agreement between the St. Charles School District, the Chief Judge and the Kane County Regional Office of Education makes this possible. Certified teachers give daily instruction year-round in language arts, math, science and social studies. The Education Program Coordinator serves as administrator and communicates with the students' public schools to help with transfers.

Home Schooling (105 ILCS 5/26-1)

Home schooling in Illinois is considered to be a form of private education. Parents who choose to educate their children at home are under a legal obligation to meet the minimum requirements stated in Illinois' Compulsory Attendance Law (Section 26-1 of the Illinois School Code). Parents who choose to educate their children at home are obligated to teach their children "...the branches of education taught to children of corresponding age and grade in the public schools" and they are further obligated to offer instruction in these core courses in the English language. The "branches of education" include language arts; mathematics; biological and physical sciences; social sciences; fine arts; and physical development and health.

The Regional Office of Education serves as a resource to those parents who are interested in home schooling their children. Information is shared with the parents to assist them. A request is made for parents to register with the Regional Office as a home-schooling parent and assure that education is being provided to their children. There are no fees collected for resource information.

Dropout Intervention Program

The Kane County Dropout Intervention Program completed its 22nd year in the 2009-2010 school year. This program reaches out to those individuals who have dropped out of school for a variety of reasons. Information is provided to them regarding continuing their education in some manner through returning to school, obtaining a GED or vocational programming. In 2009-2010, services were provided to 450 dropouts.

Business Office

Contact Person: Tom Campeggio, Director of Finance, tcampeggio@kaneroe.org

Budget – County Portion

A portion of the funds for the operating budget of the Kane County Regional Office of Education is provided by the Kane County Government. The salaries for the Regional Superintendent and the Associate Regional Superintendent are paid by the State of Illinois. The majority of funding for the operating budget for the office comes from competitive private, state, and federal grants.

The following budget figures are based on the County's fiscal year, which runs from December 1st through November 30th.

Kane County Budget Estimates FY 2009 - 2010

Line Item	FY 2009 Budgeted Amount	FY 2010 Budgeted Amount	Percentage Change
Personnel Services			
Full Time Salaries	\$ 234,440.00	\$ 228,690.00	
Part Time Salaries	\$ -	\$ -	
Contractual Services			
Public Official Bonding	\$ 100.00	\$ 100.00	
Trials & Cost of Hearings	\$ 50.00	\$ 50.00	
Printing - Legal	\$ 50.00	\$ 50.00	
Printing - General	\$ 100.00	\$ 100.00	
Maintenance - Computers	\$ -	\$ -	
Maintenance - Copiers	\$ -	\$ -	
Conference & Meetings	\$ 500.00	\$ 100.00	
Employee Training	\$ -	\$ -	
Mileage Expense	\$ 500.00	\$ 100.00	
Association Dues	\$ 200.00	\$ 50.00	
Commodities			
Office Supplies	\$ 1,500.00	\$ 1,500.00	
Data Processing Supplies	\$ -	\$ -	
Books & Subscriptions	\$ -	\$ -	
Operating Supplies	\$ 500.00	\$ 500.00	
Totals	\$ 237,940.00	\$ 231,240.00	-2.82%

Institute Fund Report (105 ILCS 5/3-12)

All certificate registration fees and a portion of renewal and duplicate fees are to be kept by the Regional Superintendent and deposited into the institute fund. The expenditure of these funds is very restricted and is used to defray expenses incidental to teachers' institutes, workshops, or meetings of a professional nature that are designed to promote the professional growth of teachers, or of any general or special meeting of teachers or school personnel of the region, which has been approved by the Regional Superintendent.

**INSTITUTE FUND FINANCIAL REPORT
JULY 1, 2009 THRU JUNE 30, 2010**

BEGINNING FUND BALANCE, JULY 1, 2009		392,327.35
RECEIPTS		
1 YR REGISTRATIONS	3,291.00	
MULTI-YEAR REGISTRATIONS	80,035.00	
REGISTRATION RENEWALS-PAST YEAR	416.00	
DUPLICATE CERTIFICATES	184.00	
TEACHER CERT APPLICATION	52,540.00	
DUE TO ISBE-TEACHER CERT APPL	(52,936.00)	
INTEREST	2,393.17	
EDUCATOR OF THE YEAR	16,849.00	
REFUNDS & ADJUSTMENTS	(525.00)	
	TOTAL RECEIPTS	102,247.17
DISBURSEMENTS		
OTHER PURCHASED SERVICES	39,056.05	
TRAVEL	0.00	
DUES & FEES	2,615.00	
PROFESSIONAL & TECHNICAL SERVICES	4,099.32	
	TOTAL DISBURSEMENTS	45,770.37
ENDING FUND BALANCE, JUNE 30, 2010		448,804.15

Certification (105 ILCS 5/21)

Contact Person: Douglas Johnson, Regional Superintendent, djohnson@kaneroe.org

The Kane County Regional Office of Education certification department serves teachers and administrators with all aspects of their certification needs. The office provides assistance with certificate applications, renewal/registration, and adding endorsements and approvals on existing certificates. The office also helps educators utilize the Educator Certification System (ECS) through the Illinois State Board of Education's website to enter their professional development by answering many questions via email or phone calls.

The Regional Office of Education reviews and approves all professional development activities for certificate renewal. Before a certificate can be re-registered, every individual professional development activity in the educator's required professional growth plan must be reviewed and approved as part of the rigorous re-certification process. This past year the ROE has issued over 1,400 teaching certificates, over 600 new substitute teaching certificates and managed over 6,200 registered certificates. The Kane County ROE tested 73 Paraprofessionals so they can obtain their NCLB Paraprofessional Approval.

The ROE hosts and maintains the Kane County Human Resource Consortium online teacher application and vacancy system for all Kane County public school districts. There were more than 22,000 applicants in the KCHRC system in 2009-2010.

*"It is the supreme art of the teacher to awaken
joy in creative expression and knowledge."*

~ Albert Einstein

Homeless Education Program

Contact Person: Julie Vallejo, Assistant Superintendent, jvallejo@kaneroe.org

Kane ROE Equal Chance Program

(Federal, Subtitle B of Title VII, McKinney-Vento Homeless Assistance Act 42 U.S.C. 11431 et seq)

Homeless children and youth face numerous obstacles in obtaining an education. All children including homeless, are entitled to a free public education. The goal of the Kane County Homeless Education Program is to assist the Kane County School Districts to ensure equal educational access for all homeless children and youth, including preschoolers, so that each student will have the opportunity to succeed in school programs and meet the same challenging state standards to which all students are held. The federal McKinney-Vento Act requires school districts to be pro-active in finding homeless children who are not attending school and identifying which children and youth are homeless.

The Kane County ROE Equal Chance Program assists Kane County School Districts by;

- Training school staff, social service agency and community agency staff
- Providing outreach and materials to schools that have low income families
- Facilitating bimonthly parent meetings at shelters
- Collaborating with ROE Youth Outreach Workers and Safe Schools Facilitators
- Providing direct and supportive assistance to families/youth in need

For the 2009-2010 school year the ROE Equal Chance Program provided:

- 12 trainings to all school staffs including Head Start staff and 5 social service agencies
- 11 Administrators' Academies
- Facilitated 12 parent meetings
- Collaborated with ECC, U-46, D300, Community Crisis Center for the first Annual Project Backpack Back To School Fair in distributing 2,500 backpacks filled with school supplies and attended by 40 social service agencies
- Distributed Christmas Gifts donated by churches, Renaissance Foundation and Kane ROE to 200 children
- Distributed 45 Thanksgiving and Easter food baskets to Kane County families
- Facilitated and funded tutoring for 35 homeless students in Kane County
- Partnered with West Aurora/Aurora University After School Tutoring Program (including providing school supplies)
- Partnered with School District U-46 Project Access to facilitate a partnership with Wisdom Adhesives for the 1st Annual Wisdom Adhesives Scholarship Event. (4 homeless high school seniors received laptops and \$500.00 each towards college.)
- Partnered with U-46, D300, and Elgin YWCA for 2nd Annual Wish Upon A Wardrobe Prom Dress giveaway

This program is administered by the Area One Lead Program and funded by a sub grant from the Illinois State Board of Education through the McKinney –Vento Homeless Assistance Act of 2001.

For the 2009-2010 school year, school districts in Kane County served and reported 1598 homeless students, a 26.8% increase from the previous year.

Networks

Networks provide mutual assistance and support that facilitates sharing of information and services among individuals and groups. Constant feedback and strong participation indicates that networks are serving the nine Kane County school districts and their staffs well through sharing of best practices, working together to solve common problems and providing savings through collaborative program development. Collaborative professional development opportunities are regularly developed like the annual county-wide institute day, resulting in saving precious budget dollars.

The networks are prominently mentioned as a benefit for new members as they gain expertise from experienced colleagues throughout the region. Regional Office of Education leadership also participates in area and statewide networks like regional superintendents, administrators' academy coordinators, professional development directors, safe school directors and technology directors.

The ROE has established the following networks with the nine K-12 school districts in its jurisdiction:

- Superintendents
- Kane County Learning Leaders (directors of curriculum and instruction)
- Kane County Human Resources Consortium (human resources directors)
- Facilities Managers
- Gifted Education Directors
- Northern Illinois Association w/ Special Education Directors
- Reading Leaders
- School Safety/Security Team
- School Health/Wellness Team
- Special Education Directors
- Technology Directors
- Transportation Directors
- Transportation Routers

“Synergism is the simultaneous actions of separate entities which together have greater total effect than the sum of their individual effects.”

~ Buchholz and Roth

Partnerships

Career Cruising

It is important for every student to have the opportunity to examine their own interests and talents, gain an awareness of the multitude of jobs and careers available in the work world of the 21st Century, and to set educational goals and plan for specific steps to achieve their chosen career path.

Career Cruising is a user-friendly electronic career guidance program for use by students that combines comprehensive career information, first class assessment tools, a comprehensive post-secondary school data base, financial aid information, a portfolio and resume system, and an administrative component . The Kane County ROE, Northern Kane Education for Employment System, and VALEES Education for Employment System partnership provides Career Cruising site licenses for all high schools and middle schools within the region.

Career and Technical Education Partnership

The Kane County Regional Office of Education, VALEES Education for Employment System, and Northern Kane Education for Employment System continue to partner in offering professional development opportunities to public school counselors, teachers, and administrators.

- Building Employability Strategies for the 21st Century
- Building Partnerships for America’s Future
- Reading Strategies for CTE Content Language
- Career Development: Raise the Bar, Close the Gap and Cultivate Relationship



“Our success has really been based on partnerships from the beginning.”

~ Bill Gates

Kane County Human Resources Consortium

(KCHRC)

The Kane County Human Resources Consortium (KCHRC), formed in 2002, is a cooperative effort among the nine public K-12 school districts and the Regional Office of Education in Kane County, Illinois. The KCHRC is dedicated to the recruitment, selection, and professional growth of quality educators. The Consortium has created a single online application process allowing applicants to submit a teaching application to all nine districts at once. Kane County school administrators are trained to utilize the system in the hiring of all certified teachers. District human resources directors meet twice a month with the ROE for planning and professional development. More information on the online application can be found at www.teachinkane.org

Master/Doctorate Degree Programs

The Kane County Regional Office of Education and Aurora University collaborated to develop and provide a Master and Doctoral program for the teachers in Kane County. These classes are intentionally structured so the skills and knowledge the teachers learn can immediately be applied to the classrooms. Many graduate courses are hosted at the ROE throughout the year on evenings and weekends.

Operation Snowball

Greater Fox River Valley Operation Snowball (GFRVOS) is a community-based alcohol, tobacco and drug use prevention program focusing on leadership development to empower youth to lead drug-free lives. The name originates from the idea that "If I can have a positive impact on you, you can have a positive impact on someone else and the effect snowballs." Out of this concept emerges "A Community of Caring" - the success of Operation Snowball.

*“Learn from yesterday,
live for today, hope for
tomorrow. The
important thing is not
to stop questioning.”*

~ Albert Einstein

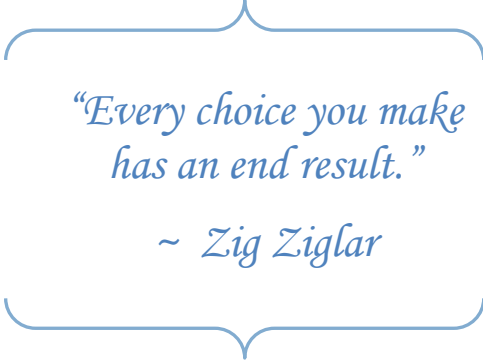
Operation Snowball seeks to bring together high school youth and caring adults to develop a trusting relationship. It is founded on the belief that youth and adults can make responsible decisions when provided with factual information and an opportunity to develop an understanding of one's self and others.

Currently there are 12 participating high schools within Kane County. The group meets at the ROE every Thursday evening. Twice during the year they have a weekend event which has 150 student attendees. All events are co-sponsored and partially funded by the ROE.

16th Circuit Court Gang Task Force

The Kane County Regional Office of Education has been represented on the gang task force for the past nine years through attendance at monthly meetings and by partnering with professional development programs for educators, juvenile court services personnel, Juvenile Justice Center personnel, and law enforcement. This partnership has helped to build bridges between professionals that serve “at-risk youth” in our region. Gang task force members yearly provide professional development for county-wide teacher institute day programs on gang-related topics, the probation

process as it relates to schools and gang influence on society. This year the gang task force, the ROE, and School District #303 sponsored the renowned Lt. Colonel David Grossman for a highly-rated, full-day presentation on “The Culture of Violence in Our Society” for 390 law enforcement officers, court services personnel, educators and members of the community.



*“Every choice you make
has an end result.”*

~ Zig Ziglar

Spelling Bee

In cooperation with the Scripps Howard National Spelling Bee and our local sponsor, the Kane County Chronicle, the ROE is proud to coordinate the Spelling Bee for our Kane County public and non-public schools. At the beginning of each school year, all schools that register with Scripps to participate have individual school Spelling Bees. The winners’ names are reported to the Kane County Regional Office of Education. The regional Spelling Bees are scheduled to take place in February. The winners from the regional bees have a final competition in March before one winner from Kane County proceeds to the Scripps National Spelling Bee in Washington D.C. in May. The local and regional Spelling Bees are coordinated and funded by the Regional Office of Education.

Association for Individual Development (AID)

The Association for Individual Development serves physically and mentally handicapped individuals within the region and beyond. The ROE hosts their regularly-scheduled board meetings.

Professional Development (105 ILCS 5/3-14.6-9)

Contact Person: Shirley LeClere, Director of Professional Development, sleclere@kaneroe.org

The Regional Office of Education facilitates and works collaboratively with teachers and leaders to guide their continuous instructional improvements through professional development opportunities. Our office establishes educational partnerships that offer best practices for enhancing student achievement.

The Regional Office of Education supports a wide variety of activities including institutes, workshops, conferences, networking, technical assistance, information dissemination, and consulting to meet the needs of our schools. These activities are designed to complement the other Kane County Regional Office of Education and district professional development programs. Our office collaborates with local, regional, and state educational partners representing both the public and private sector in creating learning opportunities for the entire Kane County Learning Community.

Reading First and System of Support (RESPRO-Area 1) training activities supported through No Child Left Behind (NCLB) federal funding are aligned with the goals articulated in the Illinois State Board of Education and the No Child Left Behind guidelines.

“The number one benefit of information technology is that it empowers people to do what they want to do.

*It lets people be creative.
It lets people be productive.
It lets people learn things
they didn't think
they could learn before,
and so in a sense
it is all about potential.”*

Illinois Administrators' Academy (105 ILCS 5/2-3.53)

The purpose of the Academy is to maintain a statewide, regionally-based network that provides opportunities for mandated professional development for school administrators. The Academy provides high-quality training on the evaluation of certified personnel, school improvement, school accountability, public relations, communications, and pertinent leadership education relating to student growth, student achievement and school operations. By statute, every administrator must complete a minimum of one approved academy annually and a minimum of five in each administrator certificate renewal period. In conjunction with local districts, other regional offices, state-wide education related professional organizations and approved third party providers, the Kane County Regional Office of Education provides a comprehensive selection of Academy programs.

Administrators' Academy Offerings

- Best Practices in Reading Grades 4-8 - An Administrator's Guide
- Boys & Girls ARE Different: Closing the Achievement Gap
- Building the Best School Staff
- Change - Who Moved My Cheese?
- Creating Effective Classroom Assessments
- Creating a Framework for School-Wide Literacy Excellence
- Ed Technology-Learning to Use Networking Resources on the New Web
- Expanding Your Personal Effectiveness As A Leader
- Harnessing the Power of Data to Effect School Improvement
- Identifying Best Practices in Mathematics Instruction for Administrators
- Improving Your School Security Program
- Institute II: Communication, Decision-Making & Vision & Leadership
- Introduction to the Evaluation of Certified Staff - 2008 Revision
- Multi-Hazard Emergency Planning of IL Schools-Creating an Action Plan
- Preparing Lead Learners For Learning Organizations: Enhancing Small Learning Communities
- Recognizing and Assisting Homeless Students: What Every Educator Needs to Know
- Supporting Reading Instruction Through Formative Supervision
- Supporting RtI with Digital Tools: The Integrating in Core
- Teacher Supervision Advanced Training in the Danielson Model
- The 21 Indispensable Qualities of a Leader
- The Boss of the Whole School: Essential Leadership Skills for the New Principal
- The Future of Leadership - Technology & the School Leader
- The School Administrator as Instructional Technology Leader
- The Value of Lasting Leadership
- Train-the-Trainer-Multi-Hazard Emergency Planning for IL Schools
- Training to Select & Develop Excellent Support Staff Employee Introduction
- Training To Select & Dev. Excellent Support Staff Employees-Advanced Phase II
- Training to Select & Develop Great Teachers - Introductory
- Training to Select & Develop Great Teachers - Advanced Phase
- Training to Select & Develop Great Teachers - Advanced Phase II
- Using Technology with Classroom Instruction That Works
- Using the Survey of Enacted Curriculum (SEC) To Inform Curriculum & Instruction

Institute Day (105 ILCS 5/3-11)

The Kane County Regional Office of Education coordinates and sponsors a countywide institute day of learning for all educators throughout the county on the last Friday in February. Teachers, paraprofessionals, health professionals and other support staff are able to select topics of interest to attend. Participants have access to the latest research-based practices and acquire new ideas and knowledge to help facilitate their work in teaching and learning.

Institute Offerings

- An Arena for Success: Discovering Your Inner Strengths with Equine-Assisted Psychotherapy
- Brain GEMs for More Effective Teaching
- Building Partnerships for America's Future
- Connecting Kids with Nature
- Creating a College Going Culture: What's Guidance Got to do with It?
- Developing and maintaining a successful Employee Wellness Program
- Do-Able Differentiation: Varying Groups, Texts, and Support to Reach Readers
- Engaging Student Writers: A Different Look at Writer's Workshop
- Enhancing Curriculum Content Area Through the Use of Technology
- Exploring Bioethics
- Exploring Kane County Ecology
- Expository and Persuasive Writing - Going Beyond Writing for the ISAT (Grades 5-8)
- Fostering Social Emotional Learning (SEL) in You and Your Students
- Helping Struggling Students: Dynamic Strategies for Content Area Teaching Secondary Grades
- Helping Students Who Are n the Path to Nowhere- Avoiding Chronic Failure in Math
- Humor, Heart and Hope: FUNdamentals of Teaching the Twice-Exceptional Student and From Stress Balls to Ball Chairs...
- Igniting a Passion for Reading: Engaging the Reluctant Reader
- Improving Your School Security Program #417
- Inquiry Based Science in the 21st Century Science Classroom
- Instructional Strategies: Modifications and Adaptations
- Introduction to Autism Spectrum Disorders
- Is Anybody Listening?
- Leave No Child Inside, Take them to the River Making the Reading-Writing Connection in K-2 Classrooms
- Math Plus: Reading and Critical Thinking Strategies for Math Students
- Mental Health Issues in the School
- Mid-Valley Special Education Transition Conference
- More Than Just a Melody: Using Music in the Classroom
- Motivating the Unmotivated Student
- National Board Teaching Certification: What is this "Bandwagon," and Do I Wanna Jump On?
- Our Exciting Earch
- Peaceful Schools Program
- Pre Assessments: Using Data to Lead Instruction
- Problem Solving - The Right Way
- Recognizing and Assisting Homeless Students, What Every Admin. Needs to Know
- Relational Aggression & Curriculum Development
- Response to Intervention for Paraprofessional
- Role of the Paraprofessional
- RTI: The Nuts and Bolts
- Scholastic Cinema III
- SMART Ideas Concept Mapping Software
- SMARTBoard Advanced
- SMARTBoard Basics
- SMARTBoard Intermediate
- Succeeding with Difficult Students
- The Missing Link: Helping Students Read in the Sciences
- The Nurtured Heart Approach for Educators
- Tools for Teaching: The Fred Jones Classroom Management System
- Understand by Design (UbD): Planning instruction for Authentic Learning & Deep Understanding
- Understanding Court Services: Probation and Juvenile Detention/Overview of Known Gangs in Kane County Area
- Understanding Depression and Suicide: Helping Kids to B-HIP
- United Streaming
- UTA 300-Developing your universal system (part 3)
- Visual Knowing & Visual Imagery in Action: The At-Risk Spectrum in the Classroom, Counseling & Beyond
- World Languages Consortium
- Writing: The Six Traits Way

Other Professional Development Offerings

Educational Strategies and General

- Building Employability Skills for the 21st Century (OEDP 5078)
- Career Development & Teaching Strategies RESPRO/ROE
- Gang Culture in Kane County
- Social and Emotional Learning
- The Seventh Annual Mid-America Conference Preparing Students for Success in a Global World
- Wraparound Facilitation Training

ETC and Career Awareness

- CAHA 592 NK: Special Topics: Career Development: Raise the Bar, Close the Gap, and cultivate Relationships. PART 1
- CAHA 592 VALEES: Special Topics: Career Development: Raise the Bar, Close the Gap, and cultivate Relationships. PART 1
- Curriculum Revitalization
- OEDP 5086 Rdg Strat for CTE Content Lang
- Supervision and Administration in Literacy 1 EDU 6380
- Supervision and Administration in Literacy II EDU 6390 SH

Language Arts/Reading/Writing

- Confessions of a Reading Arsonist: Igniting a Passion for Reading
- Content and Language Integration as a Means of Bridging Success for ELL's
- Cross Cultural Communication
- ELL Toolbox
- Increasing Students' Phonemic Awareness Skills English & Spanish
- International Reading Association 55th Annual Convention
- Interpreting ELL Assessments
- Making Content More Accessible to English Language Learners
- Reading Leaders Network Training
- RESPRO COACH
- Strategies for Meeting the Social and Emotional Needs of ELL Students

Math and Science

- Integrating Agriscience, Course #: OEDC 6182 (AgTech Tour for teachers)

Gifted Education Seminar

The Kane County Regional Office of Education has developed and supported an ongoing gifted networking system for districts serving gifted and talented students. Gifted and talented teachers meet frequently throughout the school year at the ROE to share expertise and resources. The ROE hosts gifted training seminars for teachers throughout the school year and during the summer.

The seminar requires teachers to meet for six days (45 hours) to deepen their understanding of how to teach and reach gifted and talented students. The goal is to assist teachers in creating an environment that identifies gifted and talented students, addresses diverse needs, and measures student growth in the classroom. During the 2010 school year, seven Gifted Education Seminars were offered throughout the county for 188 teachers.

Educator of the Year Awards

The 35th Annual Educator of the Year Awards Banquet was held at the Pheasant Run Resort Mega Center on May 7, 2010. This awards banquet provides an opportunity to honor outstanding members of the education profession in Kane County and promote the awareness of the quality education being provided in our schools. Special recognition is also given to those retiring from education.

Local nominating committees consisting of teachers and administrators nominate educators throughout the county. Those nominated are seen as having the respect and admiration of students, parents, and co-workers. They play active and useful roles in their communities and schools, often distinguishing themselves as leaders.

Those honored represent the dedicated service found in all of the staff throughout Kane County. This program has received enthusiastic support from regional educators, and several Kane County award recipients have been selected by the Illinois State Board of Education as outstanding teachers in Illinois.

The dinner honored 34 distinguished educators with plaques of recognition. Those who received awards of distinction were:

<u>Award Given</u>	<u>Name</u>	<u>District</u>
Educator of the Year	Francisco de los Santos	District 131
Regional Superintendent Award	Terry Sportsman	District 301
Regional Superintendent Award	Thomas O'Reilly	District 101
R. B. Mades Associate Educator of the Year	Gail M. Feltault	Mid-Valley Cooperative
Elementary Educator of the Year	Lisa Elizabeth Weimer	District 302
J.L. Hanson Middle School Educator of the Year	Nancy Garber	District 300
D.L. Hoeft High School Educator of the Year	Victor Louis Vant	District 303
Administrator of the Year	Larry Imel	District 302
Support Staff Award	Marilyn Becker	District 300

Positive Behavior Interventions and Support (PBIS)

The 2009-10 school year was the 9th consecutive year that the PBIS project has been supported by the Kane County Regional Office of Education. PBIS is a process that 1,242 schools in 309 Illinois school districts have put in place to help improve student behavior. Students are more likely to learn in schools where the vast majority follow school rules and respond to the efforts of the principal and teachers to improve student conduct. The Kane County Regional Office of Education provides training to teachers and administrators in Kane County schools that are interested in using the PBIS model to improve school climate the behavior of their students.

Schools that adopt the PBIS process meet the new school standards required of all schools that are spelled out in the recent federal Individuals with Disabilities Education Act (IDEA). The IDEA law requires schools to increase their efforts to improve student behavior and academic performance in reading and math. The Regional Office of Education provides training and support for 96 schools that have adopted the PBIS model in our region. Approximately 50,000 Kane County students benefit by the PBIS process in their schools. During the past year, the ROE has provided PBIS training for 1,325 educators.

PBIS offerings

- C100: New Coaches Orientation: Nuts and Bolts
- C200: Evaluation Tools, On-Line systems, and Data-Based Decision Making
- District PBIS Team Leadership Meeting D100
- Administrator Academy #540-PBIS School Renewal Process
- Administrator Academy #696-PBIS Systems of Support: A Focus on Tier 2/Secondary and Tier 3/Tertiary
- N100: Coaches Network Meeting
- N100: SWIS/CICO Refresher Training
- PBIS N100: Coaches Network Meeting
- PBIS Overview - U50
- PBIS Secondary Interventions S100
- PBIS Secondary Interventions S200
- PBIS Workshop-Assessing Primary Interventions-Are There in Place?
- PBIS Workshop-Developing Your Universal System - U200
- PBIS Workshop-Developing Your Universal System - U100
- UTA300-Implementing PBIS in Your School, Tier I, Part 3
- PBIS Workshop-Introduction to Tier 3/Tertiary
- Standard Training Course T100 Moving from Tier 2 to Tier 3
- SWIS ADVANCED-Training
- SWIS Facilitator Training
- SWIS Training (building level)
- U600 Tier 1/Universal New Team Member Training

Principal Mentoring (105 ILCS 5/2-3.53a)

Strong educational leaders are essential to student achievement. The Illinois New Principal Mentoring Program has a commitment to strengthen school leadership by requiring mentoring of new principals. The Kane County Regional Office of Education, as the mentoring entity, has established requirements for the selection and training of experienced principals to serve as mentors throughout Kane County. Nine mentors are currently mentoring new principals in Kane County.

The role of each mentor:

- Forming supportive professional relationships with new principals
- Assisting new principals with adjustment to his/her new role and in developing skill as an instructional leader
- Coaching, observing, and providing feedback to the new principal on aspects of organizational management
- Identification of significant problems and issues that act as barriers to school improvement, as well as meaningful solutions
- Structure opportunities for new principal's reflection on his/her educational practices

Reading First

The Regional Office of Education received funding to support schools within the County already identified for Reading First services. The ROE identified instructional leadership in literacy and provided training for principals, teachers, and school leaders.

Staff development opportunities were provided in the areas of:

- The essential components of reading (phonemic awareness, fluency, vocabulary, comprehension, and phonics)
- Alignment of curriculum to the Illinois Learning Standards and Performance Descriptors Analysis of data
- Instructional leadership continuity

System of Support, RESPRO Area 1-C (Federal NCLB)

No Child Left Behind was signed into law January 8, 2002. The overall purpose of the law is to ensure that each child in America is able to meet the high learning standards of the state where he or she lives. To help schools and districts meet this goal, the law provides a blend of requirements, incentives, and resources. State and federal law requires that technical assistance or a system of support be established by the State to help schools improve academic performance.

The Kane County Regional Office of Education has created partnerships between schools in status (not making adequately yearly progress) and The Regional Service Provider (RESPRO) Area 1-C. Through this partnership, schools are supported in establishing and sustaining learning communities, utilizing student data, alignment of curriculum to Learning Standards, and maintaining orderly and safe environments.

The Kane County ROE provides the following support to schools in status:

- materials to enhance teaching and learning
- workshops in reading and math
- curriculum mapping
- book studies on best practices
- test taking strategies
- ELL networking opportunities
- multiple intelligences and learning styles
- brain research
- leadership development
- designing formative assessments
- alternative instructional strategies
- differentiated learning strategies for the content area
- KeyTrain

During the 2009/2010 school year RESPRO coaches worked with six of the districts in designing and sustaining professional development opportunities to increase student achievement.

School Safety & Security (105 ILCS 5/3-14.20)

Contact Person: *Douglas Johnson, Regional Superintendent, djohnson@kaneroe.org
Harrison Schneider, Associate Superintendent, hshneider@kaneroe.org*

Health and Life Safety

All public school buildings and school-related buildings, including temporary/mobile classrooms, in the Kane County Regional Office of Education jurisdiction are inspected annually to assure compliance with the standards necessary to ensure the health and safety of public school students in Illinois, according to “Building Specifications for Health and Safety in Public Schools.” In 2009-2010 the ROE completed 375 HLS inspections. Annual inspection results from each building are available at the ROE. As required by law, a record of the annual inspection is sent to the president of the school board and a summary is filed annually with the State Board of Education. In addition, results from required State Fire Marshall inspections are reported through the ROE to the school districts and the state.

Every 10 years, each public building must be resurveyed for continued compliance by an architect or engineer licensed in the State of Illinois. The “Safety Survey Report” lists any items necessary to bring the building into full and continual compliance. Upon completion of outlined work, compliance is verified by the district and a licensed architect or engineer in a report filed with the ROE and the building is awarded a certificate of compliance.

The ROE is also responsible, through the Regional Superintendent of Schools, for statutory compliance with established standards in the construction, remodeling and demolition of public school buildings. The Regional Superintendent assures school board approval of construction plans, review of construction plans for code compliance, issuance of the building permit, and upon review, issuance of school occupancy permits. Further, the Regional Superintendent assures code compliance for temporary/mobile classroom units throughout the region in cooperation with licensed architects or engineers retained by local school districts. Records of all amendments and construction information are kept on file in the ROE.

School Health/Wellness Team

Since early 2009, the school health/wellness team network with representation from the nine public school districts, the ROE and guests from the Kane County Health Department has met monthly during the school year to review health and wellness issues. Representatives share problems, possible solutions and resources as well as successes. Initially the network focused on identifying and listing the many different programs in the districts that impact the health and wellness of students and staff. The existence of the health/wellness team network was very helpful when concern about the H1N1 Virus, commonly known as the “Swine Flu”, emerged last year. The network also spent time discussing and brainstorming about involvement in the county “Fit Kids 2020” program.

School Safety & Security Team

*“Children
can’t learn if
they are
worried about
their safety.”*

~ Laura Bush

Beginning in September 2007, the school safety/security team network, with representation from the nine public school districts and the ROE has met monthly during the school year to review school safety - security issues, plans, procedures and practices. Representatives share successes, problems, possible solutions and resources. Outside resources, including the Kane County sheriff’s office, the FBI and security consulting firms have been utilized to foster knowledge and understanding of safety issues. The network focuses on making sure all students and staff members are prepared for emergency situations. The safety/security team stresses that law enforcement first responders and the administration of all schools must collaborate to prepare and practice for emergency situations. Training has been provided to address awareness and prevention practices of school safety issues.

Facility Managers’ Network

The State of Illinois has designated the Regional Office of Education as the Authority Having Jurisdiction (AHJ) over public schools in regard to Health/Life Safety. Regional offices of education have the authority and responsibility to inspect school construction and building/facility maintenance to assure that those facilities are safe and secure for school children and staff.

The Kane County Facility Managers Network was created in September, 2008 to foster communication, cooperation and collaboration among the nine school districts and the Regional Office of Education. Attendees include school district facility managers, school district construction projects managers, architects, consultants and ROE staff. Meetings assist participants to be prepared to assure that construction projects meet all relevant codes prior to application for occupancy. The ROE conducts annual HLS inspections with facility managers and principals to assure that the maintenance of all school buildings and facilities meets code and provides a safe and secure surrounding for children and staff. All have an opportunity to learn what others are doing and participants may share procedures, resources and successes in their districts.

Technology

Contact Person: Phil Morris, Director of Technology, pmorris@kaneroe.org

Area One West Learning Technology Center (105 ILCS 5/2-3.117)

The Illinois State Board of Education (ISBE) established the Learning Technology Center program for the purpose of providing a coordinated, statewide support and infrastructure which assists school districts in planning for, implementing, assessing results and educating school staff in the use of technology and telecommunications in curricular, instructional and administrative functions. More information on the Learning Technology Center program can be found at <http://www.isbe.net/curriculum/elearning/default.htm>.

The Kane County Learning Technology Center has provided the following services using funding from the ISBE.

- Attending statewide meetings
- Facilitated or assisted schools with Technology Planning
- Assisted districts with funding and training for reading/math Initiatives using technology
- Provide internet safety training, including parent presentations (<http://www.isafe.org>)
- Provide technical support for connection to the Illinois Century Network (ICN) (<http://www.illinois.net>)
- Provide network consultation for the design and implementation of Local Area Networks (LANs) and Wide Area Networks (WANs)
- Help schools with the monitoring, management, and troubleshooting of their WANs
- Work with ICN Staff to assist in troubleshooting
- Assist schools with E-Rate applications to the federal government (<http://www.sl.universalservice.org>)
- Provide support and training for online resources available to all Kane County schools.

Fingerprinting (105 ILCS 5/10-21.9)

The Regional Office of Education provides fingerprinting services for all our public school districts. The Illinois School Code requires all new employees to have both a State and FBI criminal background check. During the last year, over 4,500 people were fingerprinted. In 2008, the addition of private schools occurred due to changing legislation. The electronic submission of fingerprints allows the ROE to receive results usually within a 24-hour period so a school district can begin employment immediately.

The ROE also partners with Kane County government to fingerprint all new employees for Kane County throughout the year.

Geographic Information System (GIS) (105 ILCS 5/7-6)

The Kane County Regional Office of Education (ROE) offers school districts the opportunity to request the assistance of its geographic information system (GIS). The GIS allows for the creation of custom maps and geographic analyses for school districts. GIS has already proven to be a useful tool for Kane County school districts in the matter of attendance boundaries.

The software allows a school district to calculate student populations in a geographic area. Attendance areas can be broken down, allowing for smaller geographic units of measurement and the presentation of a variety of school boundary scenarios. GIS allows school districts to create and take advantage of updatable maps to address geographic concerns. Some transportation concerns such as bus routes, bus stops, and hazardous roads can be represented in the GIS.

Learning Technology Services (105 ILCS 5/2-3.118)

In addition to being the Area One West Learning Technology Center, the Regional Office of Education integrates support and training in many areas of technology. A needs assessment is given during the year to teachers at monthly technology coordinator meetings. Monthly Technology Coordinator meetings are used to communicate information from the Illinois State Board of Education, and also allow dialogue between districts.

Learning Technology Services also provides technical support within the Regional Office of Education to maintain connectivity to the Illinois State Board of Education electronic systems including Teacher Certification and Administrators' Academy. It also continues to support the Safe Schools programs within Kane County school districts and support the technology implementation at the Kane County Juvenile Justice Center (JJC).

During this past year the following services have been provided for school districts:

- Hosting of district and private school websites
- Hosting of over 6,000 teacher email accounts
- Filtering of over 8,000 email accounts for spam and viruses
- Online Registration for workshops with digital encryption
- Professional Development Library accessible from ROE website
- Consultation for KCHRC On-Line Application
- Maintain LiveScan Fingerprint equipment for fingerprinting of new teachers and bus drivers in Kane County
- Hosted specialized training for school districts (i.e. Tech Assessment, Blackboard, Microsoft etc.)
- Implemented Follett Destiny
- Coordinated Websense Web Filter cooperative licensing
- Coordinate United Streaming video cooperative licensing
- Maintain ROE Website, SharePoint portal, Facebook Fan Page, and Twitter pages.
- Assist RESPRO coaches with technology held across Kane County
- Presented at ROE Connecting Conference on Technology Uses in ROE Offices
- Phil Morris, Director is also on Illinois Learning Technology Purchase Program Advisory Board, Illinois Virtual School Advisory Board, and the IlliniCloud Development Group

Transportation

Contact Person: Pat Dal Santo, Director of Alternative Programs, pdalsanto@kaneroe.org

School Bus Driver Trainings (105 ILCS 5/3-14.23)

The Regional Office of Education is responsible for conducting the initial training that is required for all new school bus drivers prior to getting a bus permit, and the annual refresher workshop that is required in the 12 month period prior to renewing his/her school bus permit. Experienced drivers must take a two hour refresher course annually, and all new drivers must take an eight hour course in school bus driver safety and first aid, as prescribed by the Illinois State Board of Education and administered by the ROE.

The ROE provided 14 Initial Bus Driver Training courses for 183 participants and 57 Refresher Trainings for over 1,296 participants.

Serious Safety Hazard Route Applications (105 ILCS 29-5.2)

The Kane County Regional Office of Education is the clearinghouse for Serious Safety Hazard Route applications. The section in the school code allows a parent/guardian to receive reimbursement for the transportation of a school child for distances of less than 1 1/2 miles when (1) walking constitutes a serious safety hazard to the safety of the pupil as determined by the Illinois Department of Transportation (IDOT), and (2) such pupil does not have access to transportation to and from school provided entirely at public expense. The parent/guardian must file an application for each school in which they have a pupil attending when such school is less than 1 1/2 miles from their residence.

Parents submit applications for a Serious Safety Hazard to the ROE. These are forwarded to IDOT which reviews the seriousness of three potentially dangerous conditions a child may encounter while walking to school: 1) walking on or beside a highway without sidewalks, 2) crossing a roadway, and/or 3) crossing railroad tracks.

Pupil Transportation- July 1, 2009 – June 30, 2010

<u>District</u>	<u>Average Number of Regular Transportation pupils Transported Per Year</u>	<u>Transportation Miles</u>					<u>Direct Costs</u>				
		<u>Regular</u>	<u>Vocational</u>	<u>Special Ed</u>	<u>Non-reimbursable</u>	<u>Total</u>	<u>Regular</u>	<u>Vocational</u>	<u>Special Ed</u>	<u>Non-reimbursable</u>	<u>Total</u>
U46 ELGIN	24,028.00	2,567,258	0	2,379,919	349,651	5,296,828	10,802,199	0	9,894,082	1,452,994	22,149,275
101 BATAVIA AURORA	3,273.46	233,992	14,400	107,617	27,837	383,846	945,509	57,256	2,113,678	110,683	3,227,126
129 WEST AURORA	5,272.09	577,512	6,280	588,801	38,115	1,210,708	3,195,368	36,968	2,521,031	224,373	5,977,740
131 EAST	0.00	0	0	925,949	0	925,949	0	0	3,675,169	0	3,675,169
300 DUNDEE	11,693.00	1,737,327	0	1,612,486	92,596	3,442,409	6,929,754	0	6,866,401	811,385	14,607,540
301 CENTRAL	3,182.11	485,851	33,367	238,095	2,051	759,364	1,608,593	107,745	776,690	243,113	2,736,141
302 KANELAND	3,634.86	711,159	0	563,948	33,120	1,308,227	2,325,599	0	1,647,499	107,307	4,080,405
303 ST CHARLES	9,932.27	1,063,582	61,330	560,297	106,089	1,791,298	4,173,007	217,697	2,781,537	377,180	7,549,421
304 GENEVA	5,100.30	410,138	21,306	395,303	34,094	860,841	3,426,463	42,725	1,005,444	7,436	4,482,068
TOTAL 2009-2010	66,116.09	7,786,819	136,683	7,372,415	683,553	15,979,470	33,406,492	462,391	31,281,531	3,334,471	68,484,885

Information can be found at Illinois State Board of Education Website/Pupil Transportation Claim Reimbursement

Finance Reports

Contact Person: Tom Campeggio, Director of Finance, tcampeggio@kaneroe.org

Certified Personnel

		DEGREES - SALARIES - EXPERIENCE - STAFF/STUDENT RATIOS							
DISTRICT		TOTAL CERTIFIED (INCLUDE PART TIME)	DOCTORS & ED SPEC/CAS DEGREE	MASTERS DEGREE	BACHELORS DEGREE	TEACHERS AIDES (INCLUDE PART TIME)	AVG. SAL. FULL-TIME CERTIFIED TEACHERS	AVG. SAL. CERTIFIED ADMIN	
U46	ELGIN	2657	52	1842	763	316	\$59,969	\$100,741	
101	BATAVIA	464	11	358	95	82	\$63,739	\$108,939	
129	AURORA WEST	877	11	691	175	175	\$72,097	\$98,456	
131	AURORA EAST	840	15	548	277	257	\$52,795	\$90,511	
300	DUNDEE	1306	39	978	289	389	\$46,817	\$98,911	
301	CENTRAL	276	9	155	112	41	\$55,915	\$100,762	
302	KANELAND	385	9	269	107	67	\$56,927	\$92,427	
303	ST CHARLES	948	27	664	257	173	\$64,239	\$105,341	
304	GENEVA	461	17	373	71	138	\$67,348	\$107,305	
TOTAL FY2010		8214	190	5878	2146	1638	\$59,983	\$100,377	
			2.31%	71.56%	26.13%	19.94%			
TOTAL FY2009		9165	184	5249	3732	1925	\$59,288	\$98,972	
			2.01%	57.27%	40.72%	21.00%			

Certified Personnel Continued

DISTRICT	AVG. YRS. EXPERIENCE TEACHING IN ILLINOIS	ENROLLMENT PER CERTIFIED STAFF MEMBER FY2010	ENROLLMENT PER CERTIFIED STAFF MEMBER FY2009	TEACHER TO ADMINISTRATIVE STAFF RATIO	SUPPORT STAFF	ENROLLMENT TO SUPPORT STAFF RATIO	ENROLLMENT PER FALL HOUSING RPT FY2010
U46 ELGIN	12.0	15.5	14.5	18.0	1,960	21.1	41,269
101 BATAVIA	13.0	13.4	13.5	18.3	88	70.7	6,225
129 AURORA WEST	11.4	14.2	14.6	17.7	251	49.5	12,428
131 AURORA EAST	8.7	16.1	16.9	13.7	201	67.2	13,507
300 DUNDEE	10.9	15.5	14.8	12.5	416	48.6	20,217
301 CENTRAL	10.9	12.3	12.1	17.4	181	18.8	3,394
302 KANELAND	10.1	12.4	11.7	13.3	170	28.0	4,757
303 ST CHARLES	11.4	14.6	12.5	17.6	438	31.6	13,860
304 GENEVA	12.9	13.0	13.3	15.5	249	24.0	5,971
Average	11.3	14.1	13.8	16.0	3,954	39.9	121,628
PRIOR YEAR	10.5	12.8	13.0	20.1	4,053	37.2	120,629

Classroom Buildings In Use – July 1, 2009 – June 30, 2010

DISTRICT		Elementary School		Middle or Junior High School		Senior High School		Mobile Classroom		Other, Special Ed, Voc Ed, Etc.	
		<u>FY10</u>	<u>FY09</u>	<u>FY10</u>	<u>FY09</u>	<u>FY10</u>	<u>FY09</u>	<u>FY10</u>	<u>FY09</u>	<u>FY10</u>	<u>FY09</u>
		U46	ELGIN	40	40	8	8	5	5	61	64
101	BATAVIA	6	6	1	1	1	1	0	0	0	1
129	AURORA WEST	11	11	4	4	1	1	6	16	1	2
131	AURORA EAST	12	12	3	3	1	1	0	0	4	5
300	DUNDEE	19	17	5	4	3	3	6	18	0	2
301	CENTRAL	4	4	2	2	1	1	0	0	0	0
302	KANELAND	4	4	1	1	1	1	0	3	1	1
303	ST CHARLES	12	12	3	3	2	2	6	5	1	0
304	GENEVA	6	5	2	2	1	1	0	0	1	0
TOTAL		114	111	29	28	16	16	79	106	14	16

Public School Enrollment – September 2009

**FY10 Enrollment
Enrollment - Public Schools - September 2009**

District	School	FY09	FY10	Pre-K	K-5	6-8	9-12
U46	Elgin	40,989	41,269	1,287	18,581	9,106	12,295
101	Batavia	6,215	6,225	87	2,803	1,510	1,825
129	West Aurora	12,451	12,428	365	5,718	2,897	3,448
131	East Aurora	13,453	13,507	570	7,127	2,911	2,899
300	Dundee	19,867	20,217	767	9,144	4,487	5,819
301	Central	3,254	3,394	46	1,472	811	1,065
302	Kaneland	4,586	4,757	89	2,278	1,098	1,292
303	St. Charles	13,808	13,860	165	5,995	3,351	4,349
304	Geneva	6,006	5,971	46	2,546	1,443	1,936
TOTAL FY10			121,628	3,422	55,664	27,614	34,928
TOTAL FY09			120,629	3,666	55,386	27,252	34,325

ISBE Federal & State Revenue – Fiscal Year Ending June 30, 2010

**ISBE FEDERAL & STATE REVENUE
FISCAL YEAR ENDING JUNE 30, 2010**

		STATE AID *	STATE - OTHER	FEDERAL	TOTAL	\$ PER ADA	ADA
U46	ELGIN	66,010,569	40,460,507	35,632,990	142,104,066	3,848	36930.1
101	BATAVIA	2,737,473	4,524,278	921,119	8,182,870	1,400	5,845.4
129	AURORA WEST	28,847,279	12,162,512	11,044,895	52,054,686	4,648	11,198.8
131	AURORA EAST	62,601,375	14,257,713	15,117,170	91,976,258	7,880	11,671.9
300	DUNDEE	21,944,012	20,650,512	15,699,535	58,294,059	3,090	18,863.3
301	CENTRAL	1,809,588	3,496,663	234,842	5,541,093	1,842	3,007.9
302	KANELAND	3,108,897	4,847,568	332,982	8,289,447	1,966	4,216.7
303	ST CHARLES	5,288,993	10,622,519	1,930,994	17,842,506	1,395	12,794.3
304	GENEVA	2,316,235	5,450,524	375,121	8,141,880	1,453	5,605.1
							110133.5
	TOTAL FY2010	194,664,421	116,472,796	81,289,648	392,426,865	3,563	
	TOTAL FY2009	188,696,060	121,450,653	61,985,997	372,132,710	3,492	
	CHANGE	3.1%	-4.3%	23.7%	5.2%	2.0%	

* State Aid numbers contain the Federal Stimulus amounts from the A.R.R.A.

** Additional Financial and District information may be obtained at www.isbe.net

FY10 Annual Report Index

A	Kane ROE Equal Chance Program 16
Area One West Learning Technology Center ...31	L
Association for Individual Development (AID) .20	Learning Technology Services..... 32
B	Legal Reference 7
Budget – County Portion13	Legislative Development of the Office 7
Business Office13	M
C	Master/Doctorate Degree Programs..... 19
Career and Technical Education Partnership ...18	Mission 4
Career Cruising18	N
Certification15	Networks 17
Certified Personnel.....35, 36	O
Classroom Buildings In Use.....37	Operation Snowball..... 19
D	Organizational Chart..... 6
Dropout Intervention Program.....12	Other Professional Development Offerings 24
E	P
Educator of the Year Awards.....25	Partnerships..... 18
F	Positive Behavior Interventions and Support (PBIS) 26
Facility Managers’ Network.....30	Principal Mentoring..... 27
Finance Reports.....35	Professional Development..... 21
Fingerprinting31	Public School Enrollment..... 37
G	Pupil Transportation..... 34
Gang Task Force.....20	R
General Educational Development (GED)11	Regional Board of School Trustees 7
Geographic Information System (GIS)32	Regional Safe Schools Program (RSSP) 11
Gifted Education Seminar.....25	Regional Superintendents of Schools 9
H	S
Health and Life Safety.....29	School Bus Driver Trainings 33
Home Schooling.....12	School District Boundary Map 5
Homeless Education Program16	School District Information..... 4
I	School Health/Wellness Team..... 29
Illinois Administrators’ Academy.....22	School Safety & Security..... 29
Institute Day23	School Safety & Security Team 30
Institute Fund Report14	Serious Safety Hazard Route Applications..... 33
ISBE Federal & State Revenue38	Spelling Bee 20
J	Superintendent of Educational Service Region . 8
Juvenile Justice Center12	System of Support, RESPRO Area 1-C..... 28
K	T
Kane County Human Resources Consortium (KCHRC)18	Technology 31
	Transportation 33
	Truancy Prevention/Intervention Program 10