

**KANE COUNTY  
REGIONAL OFFICE OF EDUCATION**

Patricia Dal Santo  
*Regional Superintendent*  
Dr. Mark Klaisner  
*Assistant Superintendent*

210 S. Sixth Street  
Geneva, IL. 60134  
Phone: 630-232-5955  
Fax: 630-208-5115  
[www.kaneroe.org](http://www.kaneroe.org)

**Regional Office of Education  
Fiscal Year 2013 Annual Report**

As Superintendent of the Kane County Regional Office of Education, Kane County, Illinois, I hereby submit the annual report of the activities of this office from July 1, 2012 through June 30, 2013.

This report is an overview and is not inclusive of all the services and collaborative partnerships the Regional Office of Education provides as an educational leader for the benefit of the schools and citizens of Kane County. This report uses information from end-of-year reports of our programs and services and from end-of-year school reports from the Illinois State Board of Education website to make this Annual Report as comprehensive as possible. We hope it will help you better understand the work our office and the educators of Kane County provide to ensure our schools are safe and nurturing places of learning where all people, young and old alike, are valued and respected.

Sincerely,

Patricia Dal Santo  
Regional Superintendent of Schools  
Kane County Regional Office of Education

# Table of Contents

---

<b>TABLE OF CONTENTS .....</b>	<b>2</b>
<b>THE MISSION.....</b>	<b>4</b>
<b>KANE COUNTY SCHOOL DISTRICT INFORMATION.....</b>	<b>4</b>
<b>KANE COUNTY SCHOOL DISTRICT BOUNDARY MAP.....</b>	<b>5</b>
<b>KANE COUNTY REGIONAL OFFICE OF EDUCATION .....</b>	<b>6</b>
<b>ORGANIZATIONAL CHART.....</b>	<b>6</b>
<b>LEGISLATIVE .....</b>	<b>7</b>
LEGAL REFERENCE FOR ANNUAL REPORT .....	7
LEGISLATIVE DEVELOPMENT OF THE OFFICE.....	7
REGIONAL BOARD OF SCHOOL TRUSTEES .....	7
SUPERINTENDENT OF EDUCATIONAL SERVICE REGION .....	8
REGIONAL SUPERINTENDENTS OF SCHOOLS .....	9
<b>ALTERNATIVE PROGRAMS .....</b>	<b>10</b>
TRUANCY PREVENTION/INTERVENTION PROGRAM (105 ILCS 5/3-13).....	10
REGIONAL SAFE SCHOOLS PROGRAM (RSSP) (105 ILCS 5/13 A-8) .....	11
GENERAL EDUCATIONAL DEVELOPMENT (GED) (105 ILCS 5/3-15.12) .....	11
JUVENILE JUSTICE CENTER (105 ILCS 5/14-7.03) .....	12
HOME SCHOOLING (105 ILCS 5/26-1) .....	12
DROPOUT INTERVENTION PROGRAM .....	12
<b>BUSINESS OFFICE.....</b>	<b>13</b>
BUDGET – COUNTY PORTION .....	13
INSTITUTE FUND REPORT (105 ILCS 5/3-12) .....	14
<b>CERTIFICATION (105 ILCS 5/21).....</b>	<b>15</b>
<b>HOMELESS EDUCATION PROGRAM.....</b>	<b>16</b>
KANE COUNTY ROE EQUAL CHANCE PROGRAM.....	16
<b>NETWORKS .....</b>	<b>17</b>
<b>PARTNERSHIPS.....</b>	<b>18</b>
CAREER CRUISING .....	18
CAREER AND TECHNICAL EDUCATION PARTNERSHIP .....	18
KANE COUNTY HUMAN RESOURCE CONSORTIUM (KCHRC).....	19
MASTER/DOCTORATE DEGREE PROGRAMS .....	19
OPERATION SNOWBALL.....	19
STRATEGIC PLANNING .....	20
SPELLING BEE .....	20
ASSOCIATION FOR INDIVIDUAL DEVELOPMENT (AID) .....	20
<b>PROFESSIONAL DEVELOPMENT (105 ILCS 5/3-14.6-9).....</b>	<b>21</b>
ILLINOIS ADMINISTRATORS’ ACADEMY (105 ILCS 5/2-3.53).....	22
INSTITUTE DAY (105 ILCS 5/3-11) .....	23
OTHER PROFESSIONAL DEVELOPMENT OFFERINGS.....	24
GIFTED EDUCATION SEMINAR.....	25
EDUCATOR OF THE YEAR AWARDS .....	25
POSITIVE BEHAVIOR INTERVENTIONS AND SUPPORT (PBIS).....	26

SYSTEM OF SUPPORT, SSOS AREA 1-C (FEDERAL NCLB).....	27
<b>SCHOOL SAFETY &amp; SECURITY (105 ILCS 5/3-14.20).....</b>	<b>28</b>
HEALTH AND LIFE SAFETY .....	28
SCHOOL HEALTH/WELLNESS TEAM .....	28
SCHOOL SAFETY & SECURITY TEAM .....	29
FACILITY MANAGERS NETWORK.....	29
<b>TECHNOLOGY .....</b>	<b>30</b>
AREA ONE WEST LEARNING TECHNOLOGY CENTER (105 ILCS 5/2-3.117).....	30
FINGERPRINTING (105 ILCS 5/10-21.9) .....	30
GEOGRAPHIC INFORMATION SYSTEM (GIS) (105 ILCS 5/7-6) .....	31
LEARNING TECHNOLOGY SERVICES (105 ILCS 5/2-3.118).....	31
<b>TRANSPORTATION .....</b>	<b>32</b>
SCHOOL BUS DRIVER TRAININGS (105 ILCS 5/3-14.23).....	32
<b>FINANCE REPORTS .....</b>	<b>33</b>
CERTIFIED PERSONNEL .....	33
CERTIFIED PERSONNEL CONTINUED .....	34
CLASSROOM BUILDINGS IN USE- JULY 1, 2012 – JUNE 30, 2013 .....	35
PUBLIC SCHOOL ENROLLMENT – SEPTEMBER 2012 .....	35
ISBE FEDERAL & STATE REVENUE – FISCAL YEAR ENDING JUNE 30, 2013 .....	36
<b>FY13 ANNUAL REPORT INDEX .....</b>	<b>37</b>

# The Mission

---

The mission of the Kane County Regional Office of Education is to advocate for education, provide leadership, perform regulatory functions, and coordinate state and local services for educators, school districts, and the community.

## Kane County School District Information

---

### **School District U-46**

Dr. Jose Torres, Superintendent  
355 E. Chicago Street,  
Elgin, IL 60120  
Phone: 847-888-5000  
[www.u-46.org](http://www.u-46.org)

### **School District 101**

Dr. Jack Barshinger, Superintendent  
335 W. Wilson Street  
Batavia, IL 60510  
Phone: 630-937-8800  
[www.bps101.net](http://www.bps101.net)

### **School District 129**

Dr. James Rydland, Superintendent  
Box 4430, 80 S. River Street  
Aurora, IL 60506  
Phone: 630-301-5000  
[www.sd129.org](http://www.sd129.org)

### **School District 131**

Dr. Jerome Roberts, Superintendent  
417 Fifth Street  
Aurora, IL 60505  
Phone: 630-299-5550  
[www.d131.org](http://www.d131.org)

### **School District 300**

Dr. Michael Bregy, Superintendent  
300 Cleveland Avenue  
Carpentersville, IL 60110  
Phone: 847-426-1300  
[www.d300.org](http://www.d300.org)

### **School District 301**

Dr. Todd Stirn, Superintendent  
275 South Street, Box 396  
Burlington, IL 60109  
Phone: 847-464-6005  
[www.burlington.k12.il.us](http://www.burlington.k12.il.us)

### **School District 302**

Dr. Jeffrey Schuler, Superintendent  
47W326 Keslinger Road  
Maple Park, IL 60151  
Phone: 630-365-5111  
[www.kaneland.org](http://www.kaneland.org)

### **School District 303**

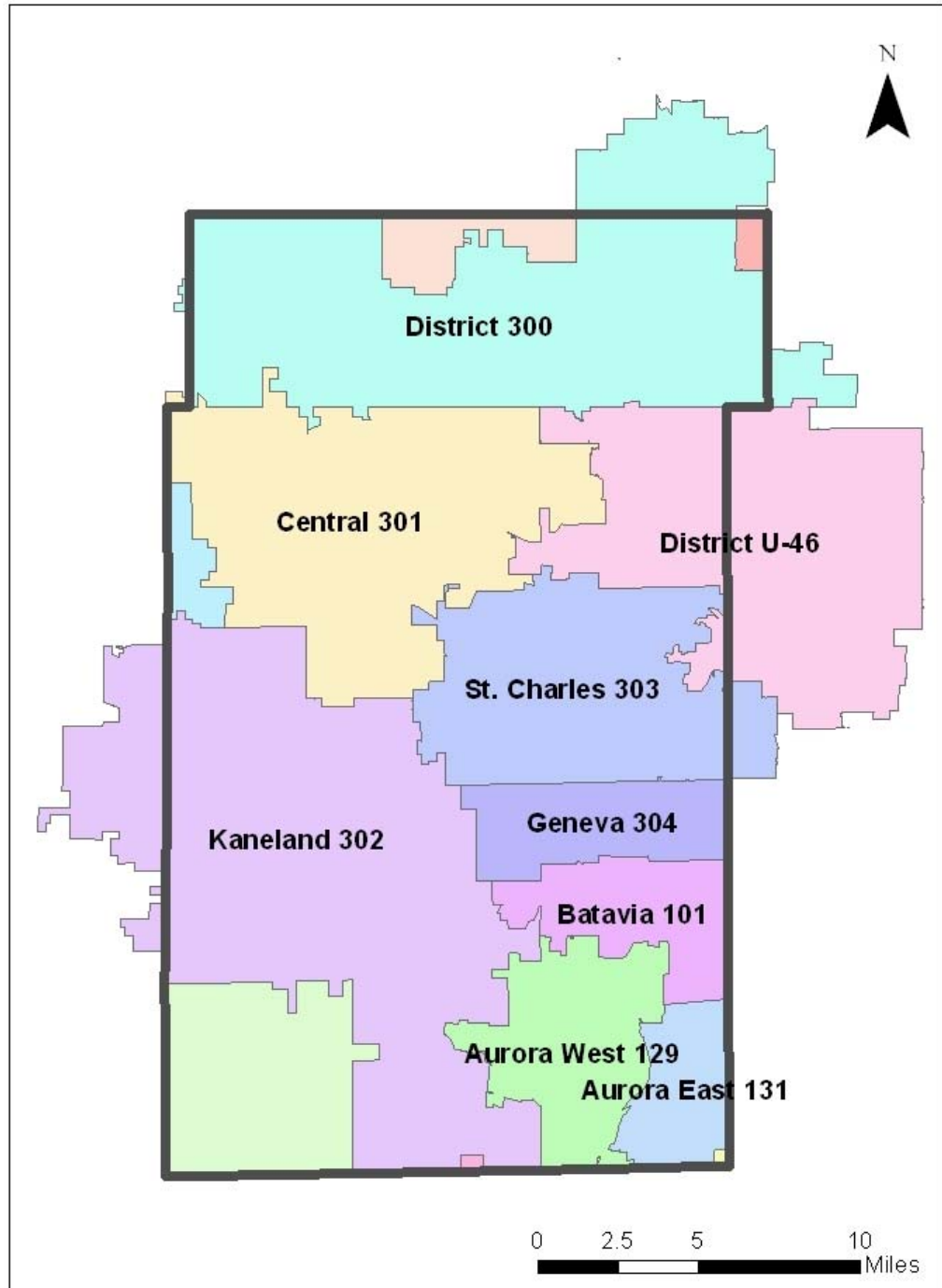
Dr. Donald Schlomann, Superintendent  
201 South 7<sup>th</sup> Street  
St. Charles, IL 60174  
Phone: 630-513-3030  
[www.d303.org](http://www.d303.org)

### **School District 304**

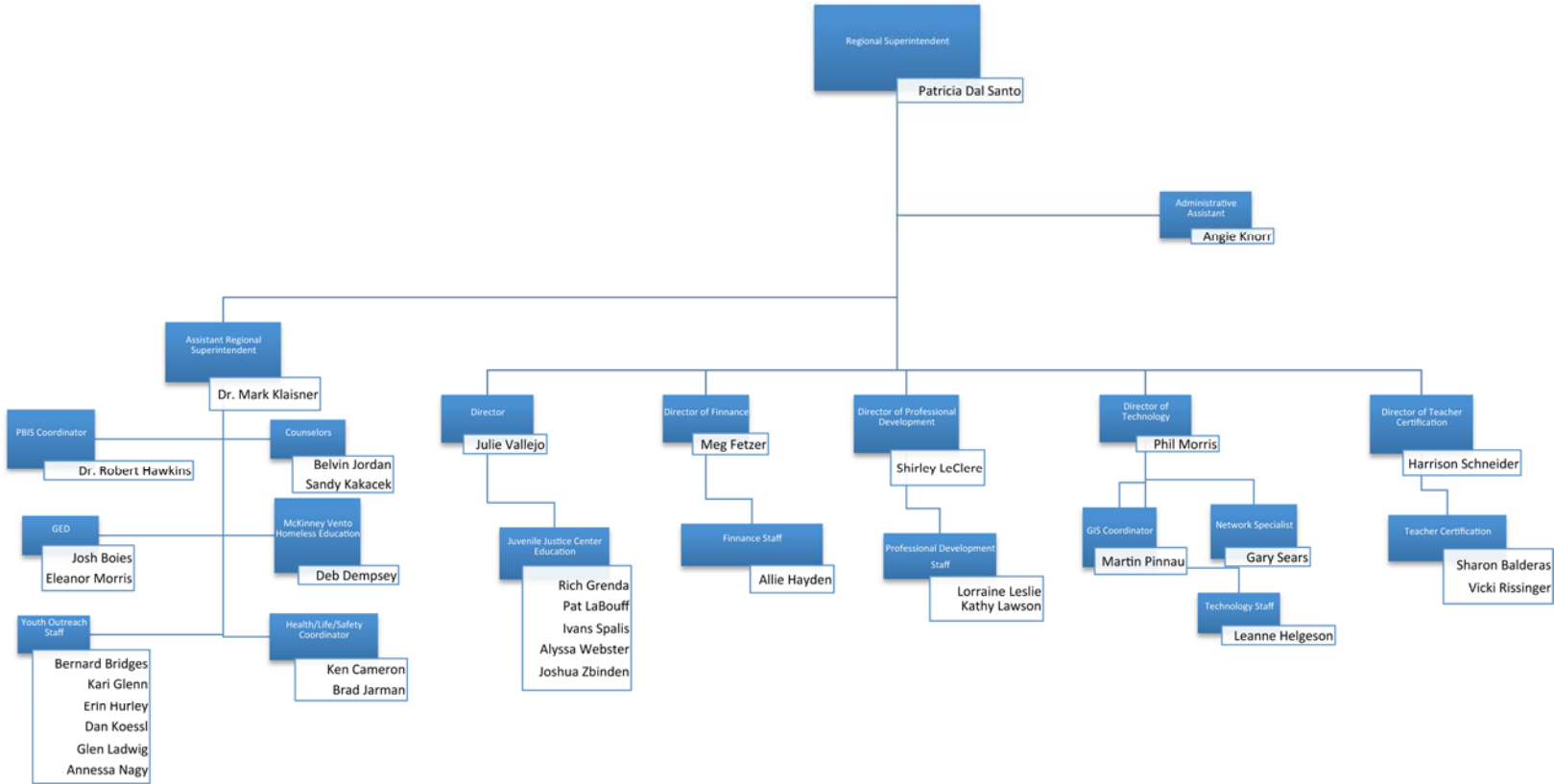
Dr. Kent Mutchler, Superintendent  
227 North Fourth Street  
Geneva, IL 60134  
Phone: 630-463-3000  
[www.geneva304.org](http://www.geneva304.org)

# Kane County School District Boundary Map

---



# Kane County Regional Office of Education Organizational Chart



# Legislative

Contact Person: Patricia Dal Santo, Regional Superintendent, pdalsanto@kaneroe.org

## **Legal Reference for Annual Report**

This annual report is designed in part to meet the provisions of Chapter 105, Article 3, Sections 5/3-5, 5/3-6 and 5/3-15.8 of the School Code of Illinois. The report of schools visited and other official acts, meetings and activities of the office are provided to the Public Service Committee of the Kane County Board at regular monthly meetings.

## **Legislative Development of the Office**

- 1829 The sixth General Assembly mandated appointment of a Commissioner of School Lands.
- 1841 Title changed to County Commissioner and Ex-Officio County Superintendent of Schools.
- 1865 Legislature called for the election of the County Superintendent of Schools.
- 1973 Consolidation of smaller counties resulted in 78 regions.
- 1975 Title of Chief Administrative Officer of an education service region changed to Regional Superintendent of Schools.
- 1977 Further consolidation resulted in 57 regions in Illinois.
- 1993 Educational Service Region Office renamed Regional Office of Education.
- 1995 Further consolidation resulted in 45 regions, each with a population of at least 45,000 inhabitants.
- 2015 Further consolidation will result in 35 regions in Illinois each with a population of at least 61,000 inhabitants.

## **Regional Board of School Trustees**

The Regional Board of School Trustees is an elected body with the sole responsibility of action on detachment/annexation petitions regarding boundary changes between school districts in the region. The board meets on the first Monday of January, April, July and October. Meetings may be canceled due to lack of agenda items. Patricia Dal Santo, Regional Superintendent, is the ex-officio Secretary for the Board of Trustees.

The members of the Regional Board of School Trustees are:

Penny Wegman, President	Elgin Township	Term Exp. 2017
Mary Shepro, Vice President	St. Charles Township	Term Exp. 2019
Kevin Williams	Geneva Township	Term Exp. 2019
Chad Koppie	Rutland Township	Term Exp. 2019
Juan Sifuentes	Aurora Township	Term Exp. 2015
G. Michael Stoffa	Blackberry Township	Term Exp. 2017
Stephen R. Wallace	Sugar Grove Township	Term Exp. 2015

## **Superintendent of Educational Service Region**

The act of Congress which admitted Illinois to the Union in 1818 set aside the sixteenth section of every township for the use of schools. In 1819, therefore, the General Assembly directed the county commissioners' court in each county to appoint three trustees from each township. These trustees, whose terms ran for four years, were charged with hiring a surveyor, laying out section 16 into lots, leasing those lots for no more than a ten year period, and appointing a clerk and treasurer to handle the leases. In 1827 this was modified to give the trustees responsibility for laying out school districts within the township. These districts were to contain no fewer than 18 scholars, and the trustees were to hire a teacher for the district.

The situation changed in 1829, when Congress agreed to permit the sale of section 16 lands. For the first time, the county commissioners' court could appoint a commissioner and agent for the county school lands. This position was the predecessor of the Regional Superintendent of Schools. The commissioner was required to prepare a record of the school lands in the county. When nine-tenths of the voters in any township decided to sell their school lands, they were required to petition the commissioner in writing. In turn, he arranged the sale, and loaned the money from the sale back to the township.

During the 1830s, minor changes were made in the school law. The percentage of voters required to sign a petition for sale of school lands was reduced and the county commissioners' court again appointed township school trustees. Most important, in 1837 the citizens of a township were given the choice of incorporating for the purpose of establishing and supporting common schools. The trustees were assigned the superintendence of the township schools, and they could appoint a clerk, who would also act as treasurer.

The school land commissioner was required to pay to this treasurer all of the money in his care which belonged to the township, and would deliver to him all bonds, notes, and mortgages. The township treasurer made an abstract, in return, which showed the name of each teacher, the number of scholars at each school, and the total number of days taught. The treasurer was to deliver this abstract to the school land commissioner and receive the interest due the township from the state's school, college, and seminary lands.

In 1841, the office of school commissioner became elective, for a term of two years. This same year, each school district was required to elect a board of three school directors, also for two-year terms. The school directors were empowered to select building sites, build schools, employ teachers, and visit the district schools. In townships which had not chosen to incorporate, the trustees of school lands could appoint school directors if none were elected.



The school law was under continual revision during the 1840's, and in 1845 the school commissioner was made *ex officio* county superintendent of the common schools. His duties included visiting the schools, examining teachers, and issuing certificates. By 1865, each county elected a superintendent of schools every four years. Township school trustees reported to this superintendent on the number of schools, the number of scholars, the number of male and female teachers, the compensation of teachers, the number of persons under age 21 in the township, the principal and interest of the township fund, the amount of the common school fund received by the treasurer, the amount raised by taxation, all other receipts and expenditures, and any other information required by the superintendent.

Most of the original regulatory duties as mandated by Illinois School Law remain the responsibility of the Regional Superintendent of Schools like registering educators' certificates, approving and conducting teacher institutes, handling school lands, visiting schools, and examining the accounts of all school treasurers in the county. But over the last

*“You don’t lead by pointing and telling people some place to go. You lead by going to that place and making a case.”*

*~ Ken Kesey*

century many more mandated duties and responsibilities of the office have been added. For example in the area of certification, before a certificate can be re-registered, every individual professional development activity in the educator's required professional growth plan must be reviewed and approved as part of the rigorous re-certification process. Every new school employee is now fingerprinted and a criminal background check is conducted in partnership with the Illinois State Police and the FBI.

While the world has seen vast changes over the last century, the Regional Office of Education remains committed to providing quality service and performing its mandated functions. The Regional Office of Education remains dedicated to ensuring every child and citizen has the educational opportunity to achieve success.

### **Regional Superintendents of Schools**

R.B. “Bink” Makes	Prior to 1975
James L. Hanson	1975 – 1987
Dr. Douglas L. Hoeft	1987 – 1992
Dr. Clem Mejia	1993 – 2007
Douglas E. Johnson	2007 – 2012
Patricia Dal Santo	2012 - Present

## Alternative Programs

Contact Person: Dr. Mark Klaisner, Assistant Superintendent, [mklaisner@kaneroe.org](mailto:mklaisner@kaneroe.org)

### **Truancy Prevention/Intervention Program (105 ILCS 5/3-13)**

In 2012-2013 the Regional Office of Education completed the 28<sup>th</sup> year of the Kane County Truancy Prevention Program. Youth Outreach Workers (truant officers) collaborate with schools to advocate for students and parents to ensure consistent school attendance.

Kane County had 1,974 official referrals from our local schools requesting truancy assistance from our staff. The services provided during the 2012-2013 year were the following:

<b>Services</b>	<b>2012-2013</b>
School Visits	1,742
Home Visits	318
Student Contacts	2,690
Community Agency Contacts	159
School Conferences	262
Regional Conferences	22
Juvenile Court Cases	24
Adult Court Cases	6

<b>Source of Referrals by District</b>	<b>2012-2013</b>
U46 Elgin	554
101 Batavia	34
129 West Aurora	241
131 East Aurora	760
300 Dundee/Carpentersville	317
301 Central	5
302 Kaneland	5
303 St. Charles	33
304 Geneva	7
Other	18
<b>By Grade Level</b>	
Elementary K-5	717
Middle School	425
High School	832
Other	0
<b>By Gender</b>	
Males	996
Females	978

### ***Regional Safe Schools Program (RSSP) (105 ILCS 5/13 A-8)***

The Regional Safe Schools Program serves expulsion-eligible and/or multiply suspended students. The statewide program, authorized through the Regional Offices of Education, began serving students in 1996 as established by the Illinois School Code to provide a system of alternative education programs for disruptive students. The purpose of the RSSP is twofold: 1) to increase safety and promote the learning environment in schools and 2) to meet the particular educational needs of disruptive students more appropriately and individually in an alternative educational environment. This is a cooperative effort between the Regional Office of Education and the local school districts. The programs within school districts are designed to meet local needs. In 2012-2013, 190 students were served through this program. Without this program, those students would not have received an education and most likely would have become dropouts.

### ***General Educational Development (GED) (105 ILCS 5/3-15.12)***

General Educational Development (GED) tests are a group of five subject tests which certify the taker has high school-level academic skills. To pass the GED tests and earn a GED credential, test takers must score higher than 40 percent of graduating high school seniors nationwide. In addition they must pass the Constitution test.

The Regional Superintendent is delegated with the responsibility of administering the GED testing program in accordance with the Illinois School Code. This program allows those who are 17 years of age or older to secure a High School Equivalency Certificate upon completing and passing all tests.

Testing centers have been established in Kane County at the Regional Office of Education in Geneva, Elgin Community College in Elgin and Waubensee Community College in Aurora. Tests are administered on Saturdays and require at least 3 Saturdays to complete the battery. The Kane County Regional Office of Education is an official scoring center with equipment for scanning and scoring all tests except the essay portion. A \$50.00 fee is charged to cover the cost, administration, and grading of tests, and the certificate.

Highlights of the 2012-2013 GED Testing Program include:

- 1,024 first-time test takers in English Language
- 412 first-time test takers in Spanish Language
- 782 English GEDs issued (completed the battery and met score requirements)
- 243 Spanish GEDs issued (completed the battery and met score requirements)
- Processed over 1,400 Transcripts and Employer Verifications
- Registered, scheduled, and tested over 1,787 unique individuals at ROE-approved test sites

### ***Juvenile Justice Center (105 ILCS 5/14-7.03)***

To guarantee students in juvenile detention continue to be educated and make a successful transition back into their public school program, the Kane County Regional Office of Education runs the Kane County Juvenile Justice Center Education Program. An agreement between the St. Charles School District, the Chief Judge and the Kane County Regional Office of Education makes this possible. Certified teachers give daily instruction year-round in language arts, math, science and social studies. The Education Program Coordinator serves as administrator and communicates with the students' public schools to help with transfers.

### ***Home Schooling (105 ILCS 5/26-1)***

Home schooling in Illinois is considered to be a form of private education. Parents who choose to educate their children at home are under a legal obligation to meet the minimum requirements stated in Illinois' Compulsory Attendance Law (Section 26-1 of the Illinois School Code). Parents who choose to educate their children at home are obligated to teach their children "...the branches of education taught to children of corresponding age and grade in the public schools" and they are further obligated to offer instruction in these core courses in the English language. The "branches of education" include language arts, mathematics, biological and physical sciences, social sciences, fine arts, and physical development and health.

The Regional Office of Education serves as a resource to those parents who are interested in home schooling their children. Information is shared with the parents to assist them. A request is made for parents to register with the Regional Office as a home schooling parent and assure that education is being provided to their children. There are no fees collected for resource information.

### ***Dropout Intervention Program***

The Kane County Dropout Intervention Program completed its 25<sup>th</sup> year in the 2012-2013 school year. This program reaches out to those individuals who have dropped out of school for a variety of reasons. Information is provided to them regarding continuing their education in some manner through returning to school, obtaining a GED or vocational programming.

# Business Office

Contact Person: Meg Fetzer, Director of Finance, [mfetzer@kaneroe.org](mailto:mfetzer@kaneroe.org)

## Budget – County Portion

A portion of the funds for the operating budget of the Kane County Regional Office of Education is provided by the Kane County Government. The salaries for the Regional Superintendent and the Associate Regional Superintendent are paid by the State of Illinois. The majority of funding for the operating budget for the office comes from competitive private, state, and federal grants.

The following budget figures are based on the County's fiscal year, which runs from December 1<sup>st</sup> through November 30<sup>th</sup>.

### Kane County Budget Estimates FY 2012 - 2013

Line Item	FY 2012 Budgeted Amount	FY 2013 Budgeted Amount	Percent of Change
<b>Personnel Services</b>			
Full Time Salaries	\$228,690.00	\$233,264.00	
Benefits	\$56,546.00	\$41,023.00	
<b>Contractual Services</b>			
Public Official Bonding	\$100.00	\$100.00	
Trials & Cost of Hearings	\$50.00	\$50.00	
Printing - Legal	\$50.00	\$50.00	
Printing - General	\$100.00	\$100.00	
Consulting	\$-	\$3,500.00	
Software - licensing	\$-	\$5,000.00	
Conference & Meetings	\$100.00	\$3,100.00	
Employee Training	\$-	\$-	
Mileage Expense	\$100.00	\$1,100.00	
Association Dues	\$50.00	\$1,550.00	
<b>Commodities</b>			
Office Supplies	\$1,500.00	\$1,500.00	
Data Processing Supplies	\$-	\$-	
Books & Subscriptions	\$-	\$-	
Operating Supplies	\$500.00	\$955.00	
<b>Totals</b>	<b>\$287,786.00</b>	<b>\$291,292.00</b>	<b>1.22%</b>

**Institute Fund Report (105 ILCS 5/3-12)**

All certificate registration fees and a portion of renewal and duplicate fees are to be kept by the Regional Superintendent and deposited into the institute fund. The expenditure of these funds is very restricted and is used to defray expenses incidental to teachers' institutes, workshops, or meetings of a professional nature that are designed to promote the professional growth of teachers, or of any general or special meeting of teachers or school personnel of the region, which has been approved by the Regional Superintendent.

**INSTITUTE FUND FINANCIAL REPORT  
JULY 1, 2012 THRU JUNE 30, 2013**

<b>BEGINNING FUND BALANCE, JULY 1, 2012</b>		<b>624,404.81</b>
<b>RECEIPTS</b>		
1 YR REGISTRATIONS	2,295.00	
MULTI-YEAR REGISTRATIONS	33,100.00	
REGISTRATION RENEWALS-PAST YEAR	55.00	
DUPLICATE CERTIFICATES	144.00	
ON-LINE REGISTRATIONS	105,880.00	
INTEREST	1,012.55	
EDUCATOR OF THE YEAR	18,234.00	
REFUNDS & ADJUSTMENTS	997.13	
<b>TOTAL RECEIPTS</b>	<b>161,717.68</b>	
<b>DISBURSEMENTS</b>		
OTHER PURCHASED SERVICES	16,597.84	
OPERATING EXPENSE	3,847.87	
DUES & FEES	1,796.55	
PROFESSIONAL & TECHNICAL SERVICES	39,282.39	
<b>TOTAL DISBURSEMENTS</b>	<b>61,524.65</b>	<b>100,193.03</b>
<b>ENDING FUND BALANCE, JUNE 30, 2013</b>		<b>724,597.84</b>

## Certification (105 ILCS 5/21)

Contact Person: Shirley LeClere, Director of Professional Development, [sleclere@kaneroe.org](mailto:sleclere@kaneroe.org)

---

The Kane County Regional Office of Education certification department serves teachers and administrators with all aspects of their certification needs. The office provides assistance with certificate applications, renewal/registration, and adding endorsements and approvals on existing certificates. The office also helps educators enter their professional development with the Educator Certification System (ECS), through the Illinois State Board of Education's website, and by answering many questions via email or phone.

The Regional Office of Education reviews and approves all professional development activities for certificate renewal. Before a certificate can be re-registered, every individual professional development activity in the educator's required professional growth plan must be reviewed and approved as part of the rigorous re-certification process.

Total Certificates Issued	908
Total Certificate Applications Processed	759
Total Duplicate Applications Processed	46
Total Endorsement Applications Processed	227
Total Educators Registered	4,542
Total Certificates Registered	5,864
Total TAS Approvals Issued	12
Total TAS N Approvals Issued	423
Total Substitute Certificates Issued	422
Total Substitute Certificates Currently Registered	1,117
Public School Administrators Employed for FY 2012	522
Public School Teachers Employed for FY 2012	6,755
Public School Service Personnel Employed for FY 2012	475

The Kane County ROE tested 80 Paraprofessionals so they can obtain their NCLB Paraprofessional Approval.

The Kane County ROE hosts and maintains the Kane County Human Resource Consortium online teacher application and vacancy system for all Kane County public school districts. There were more than 19,000 applications in the KCHRC system in 2012-2013.

# Homeless Education Program

---

Contact Person: Dr. Mark Klaisner, Assistant Superintendent, [mklaisner@kaneroe.org](mailto:mklaisner@kaneroe.org)

## **Kane County ROE Equal Chance Program**

*(Federal, Subtitle B of Title VII, McKinney-Vento Homeless Assistance Act 42 U.S.C. 11431 et seq)*

Homeless children and youth face numerous obstacles in obtaining an education. All children including homeless are entitled to a free public education. The goal of the Kane County Homeless Education Program is to assist the Kane County school districts to ensure equal educational access for all homeless children and youth, including preschoolers, so that each student will have the opportunity to succeed in school programs and meet the same challenging state standards to which all students are held. The federal McKinney-Vento Act requires school districts to be proactive in finding homeless children who are not attending school and identifying which children and youth are homeless.

The Kane County ROE Equal Chance Program assists Kane County school districts by:

- Training school staff, social service agency and community agency staff
- Providing outreach and materials to all public schools in Kane County
- Facilitating weekly parent meetings at shelters
- Collaborating with ROE Youth Outreach Workers and Safe Schools Facilitators
- Providing direct and supportive assistance to families/youth in need
- Data collection

For the 2012-2013 school year the Kane County ROE Equal Chance Program:

- Provided technical assistance to all 9 Kane County school district liaisons
- Provided 16 trainings to all school staffs including 4 social service agencies
- Provided 6 Administrators' Academies
- Collaborated with members of 16<sup>th</sup> Judicial Family Violence Court Council to provide an Administrator Academy and Institute Day offering on The Impact of Violence on Education and Mandated Reporting
- Facilitated 25 parent meetings
- Met with 50 students several times throughout the year to offer supportive services
- Assisted 20 students to complete FAFSA
- Weekly meetings/workshops with Community Crisis Center Clients
- Collaborated with ECC, U-46, D300, Community Crisis Center for the 4<sup>th</sup> Annual Project Backpack Back To School Fair in distributing 2,500 backpacks filled with school supplies that was attended by 35 social service agencies
- Distributed Christmas Gifts donated by churches, Renaissance Foundation and Kane County ROE to 225 children
- Distributed 45 Thanksgiving and Easter food baskets to Kane County families
- Facilitated tutoring for 15 homeless students in Kane County
- Partnered with U-46, D300, and Elgin YWCA for 4<sup>th</sup> annual *Cinderella's Closet* to provide prom dresses for Kane County students in need



### Affiliations 2012/2013 School Year

- The Coordinator attends and is on the Board, Steering Committee and Ranking Committee of the Kane County Continuum of Care
- The Coordinator is an Area Planning Meeting Committee member
- The Coordinator is a Member of and attended monthly meetings for the 16<sup>th</sup> Judicial Family Violence Coordinating Council

This program is administered by the Area One Lead Program and funded by a subgrant from the Illinois State Board of Education through the McKinney –Vento Homeless Assistance Act of 2001.

For the 2012-2013 school year, school districts in Kane County served and reported 1,802 homeless students.

## Networks

---

Networks provide mutual assistance and support that facilitates sharing of information and services among individuals and groups. Constant feedback and strong participation indicate that networks are serving the nine Kane County school districts and their staffs well through sharing of best practices, working together to solve common problems, and providing savings through collaborative program development. Collaborative professional development opportunities are regularly developed, like the annual countywide institute day, resulting in saving precious budget dollars.

The networks are prominently mentioned as a benefit for new members as they gain expertise from experienced colleagues throughout the region. Regional Office of Education leadership also participates in area and statewide networks like regional superintendents, administrators' academy coordinators, professional development directors, safe school directors and technology directors.

The ROE has established the following networks with the nine K-12 school districts in its jurisdiction:

- Superintendents
- Kane County Learning Leaders (directors of curriculum and instruction)
- Kane County Human Resources Consortium (human resources directors)
- Facilities Managers
- Gifted Education Directors
- Northern Illinois Association w/ Special Education Directors
- Reading Leaders
- School Safety/Security Team
- School Health/Wellness Team
- Special Education Directors
- Technology Directors
- Transportation Directors
- Transportation Routers

## Partnerships

---

### ***Career Cruising***


Students need to examine their interests and talents, gain an awareness of careers available in the work world in the 21<sup>st</sup> Century, set educational goals, and plan steps toward a career path.

Career Cruising is a user-friendly electronic career guidance program for use by students that combines comprehensive career information, first-class assessment tools, a comprehensive post-secondary school database, financial aid information, a portfolio and resume system, and an administrative component. The Kane County ROE, Northern Kane Education for Employment System, and VALEES Education for Employment System partnership provides Career Cruising site licenses for all high schools and middle schools in the region.

### ***Career and Technical Education Partnership***

The Kane County Regional Office of Education, VALEES Education for Employment System, and Northern Kane Education for Employment System continue to partner in offering professional development opportunities to public school counselors, teachers, and administrators including:

- Career Prep: Teaching Strategies
- Guiding College and Career Readiness
- Employment Skills for the 21<sup>st</sup> Century



*“Synergism is the simultaneous actions of separate entities which together have greater total effect than the sum of their individual effects.”*

*~ Buchholz and Roth*



## **Kane County Human Resource Consortium (KCHRC)**

The Kane County Human Resource Consortium (KCHRC), formed in 2002, is a cooperative effort among the nine public K-12 school districts and the Regional Office of Education in Kane County, Illinois. The KCHRC is dedicated to the recruitment, selection, and professional growth of quality educators. The consortium has created a single online application process allowing applicants to submit a teaching application to all nine districts simultaneously. Kane County school administrators are trained to utilize the system in the hiring of all certified teachers. District human resources directors meet twice a month with the ROE for planning and professional development. More information can be found at [www.teachinkane.org](http://www.teachinkane.org)

## **Master/Doctorate Degree Programs**

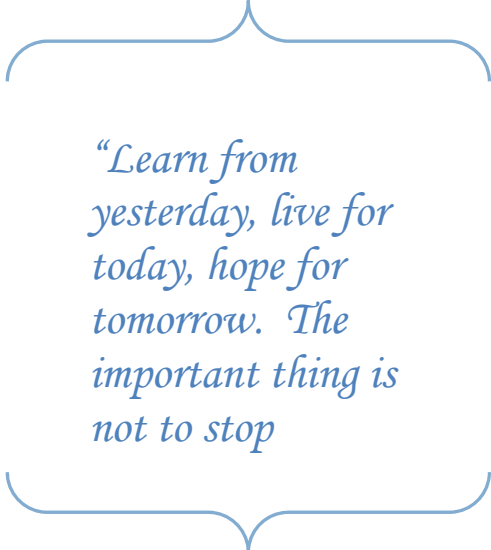
The Kane County Regional Office of Education and Aurora University collaborated to develop and provide a Master and Doctoral program for the teachers in Kane County. These classes are intentionally structured so the skills and knowledge the teachers learn can immediately be applied to the classrooms. Many graduate courses are hosted at the ROE throughout the year in evenings and/or on weekends.

## **Operation Snowball**

Greater Fox River Valley Operation Snowball (GFRVOS) is a community-based alcohol, tobacco, and drug use prevention program focusing on leadership development to empower youth to lead drug-free lives. The name originates from the idea that "If I can have a positive impact on you, you can have a positive impact on someone else and the effect snowballs." Out of this concept emerges "A Community of Caring" - the success of Operation Snowball.

Operation Snowball seeks to bring together high school youth and caring adults to develop trusting relationships. It is founded on the belief that youth and adults can make responsible decisions when provided with factual information and an opportunity to develop an understanding of one's self and others.


Currently there are 12 participating high schools within Kane County. The group meets at the ROE weekly during the evening. Twice during the year they hold a weekend event which draws 150 student attendees. All events are co-sponsored and partially funded by the ROE.



*“Learn from  
yesterday, live for  
today, hope for  
tomorrow. The  
important thing is  
not to stop*”

## **Strategic Planning**

The Kane County Regional Office of Education has put a great deal of work into developing a three-year strategic plan during FY13. Engaging a wide base of stakeholders, teams developed four “pillars” about which goals and objectives were refined. The areas of emphasis are: Professional Development, Alternative Learning Programs, Communications/Partnerships, and Resources.



*“Every choice you  
make has an end  
result.”*

*~ Zig Ziglar*



## **Spelling Bee**

In cooperation with the Scripps National Spelling Bee and our local sponsor, the Kane County Chronicle, the Kane County ROE is proud to coordinate the spelling bee for our Kane County public and non-public schools. At the beginning of each school year, all schools that register with Scripps to participate have individual school spelling bees. The winners’ names are reported to the Kane County Regional Office of Education. The regional Spelling Bees are scheduled to take place in February. The winners from the regional bees have a final competition in March before one winner from Kane County proceeds to the Scripps National Spelling Bee in Washington D.C. in May. The local and regional spelling bees are coordinated and funded by the Regional Office of Education.

## **Association for Individual Development (AID)**

The Association for Individual Development serves physically and mentally handicapped individuals within the region and beyond. The Kane County ROE hosts their regularly-scheduled board meetings.

## Professional Development (105 ILCS 5/3-14.6-9)

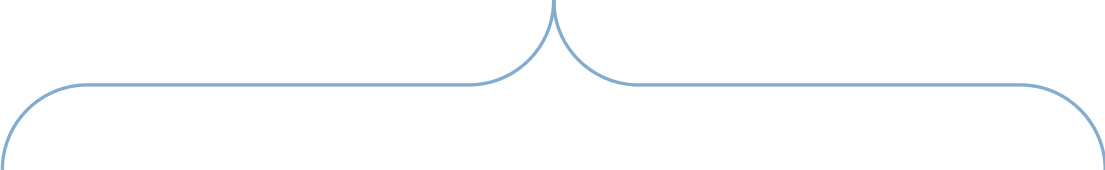
---

Contact Person: Shirley LeClere, Director of Professional Development, sleclere@kaneroe.org

The Regional Office of Education facilitates and works collaboratively with teachers and leaders to guide their continuous instructional improvements through professional development opportunities. Our office establishes educational partnerships that offer best practices for enhancing student achievement.

The Regional Office of Education supports a wide variety of activities including institutes, workshops, conferences, networking, technical assistance, information dissemination, and consulting to meet the needs of our schools. These activities are designed to complement the other Kane County Regional Office of Education and district professional development programs. Our office collaborates with local, regional, and state educational partners representing both the public and private sector to create learning opportunities for the entire Kane County learning community.

State System of Support-Area One (SSOS) training activities supported through No Child Left Behind (NCLB) federal funding are aligned with the goals articulated in the Illinois State Board of Education and the No Child Left Behind guidelines.



*“The number one benefit of information technology is that it empowers people to do what they want to do.*

*It lets people be creative.  
It lets people be productive.  
It lets people learn things  
they didn't think  
they could learn before,  
and so in a sense  
it is all about potential.”*

*~ Steve Ballmer, Microsoft*



### **Illinois Administrators' Academy (105 ILCS 5/2-3.53)**

The purpose of the academy is to maintain a statewide, regionally-based network that provides opportunities for mandated professional development for school administrators. The academy provides high-quality training on the evaluation of certified personnel, school improvement, school accountability, public relations, communications, and pertinent leadership education relating to student growth, student achievement and school operations. By statute, every administrator must complete a minimum of one approved academy annually and a minimum of five in each administrator certificate renewal period. In conjunction with local districts, other regional offices, statewide education-related professional organizations, and approved third-party providers; the Kane County Regional Office of Education provides a comprehensive selection of Academy programs.

#### **Administrators' Academy Offerings**

- Becoming an iAdministrator to Strengthen Your Leadership and Management Skills
- Effective Presentations for 21<sup>st</sup> Century School Leaders
- Closing the Gender Achievement Gap through Understanding Differences - Revised 2011
- Communicating with Staff Regarding Performance Assessment
- Developing Academic Thinking & Character Skills for 21<sup>st</sup> Century Schools
- Harnessing the Power of Data to Effect School Improvement
- Instructional Leadership for Classroom Management & Student Behavioral Planning
- Learning to Lead by Applying the Five (5) Levels of Leadership
- PBIS System of Support: Focusing on Secondary & Tertiary Tiers of Support
- Recognizing and Assisting Homeless Students: What Administrators Need to Know
- School Security: A Proactive and Holistic Approach
- Student Behavioral Threat Assessments (Grade P-12)
- Train-the-Trainer Multi-Hazard Emergency Planning for Illinois Schools

## ***Institute Day (105 ILCS 5/3-11)***

The Kane County Regional Office of Education coordinates and sponsors a countywide institute day of learning for all educators throughout the county on the last Friday in February. Teachers, paraprofessionals, health professionals and other support staff are able to select workshops of interest to attend. Participants have access to the latest research-based practices and acquire new ideas and knowledge to help facilitate their work in teaching and learning.

### **Institute Offerings**

- Accessing Resources and Strategies to Implement the English Language Arts Common Core State Standards
- Be a Leader in the AP Biology Community
- Becoming Part of an Effective Professional Learning Community
- Brain GEMs for More Effective Teaching
- Building a Classroom Community
- Building Partnerships for America's Future 2013
- Charlotte Danielson's Framework for Teaching to Support and Evaluate Professional Teaching Practices
- Charlotte Danielson's Framework for Teaching – Domains 1 & 4, and Domains 2 & 3: Observing and Collecting Evidence
- Close Reading and Differentiation with Common Core States Standards in Mind
- Connecting Close Reading and the ELA Common Core State Standards: What is it? How do we do? Why should we do it? (Grades K-5 Only)
- Creative Curriculum & Study Approach
- Cyber Bullying, Teen Dating
- Differentiated Instruction
- Effective Strategies for Learning & Teaching About Diversity
- Equine-Assisted Psychotherapy to Discover Your Inner Strengths to Enhance Communication with Staff, Students, and Parents
- Getting Real: Getting Kids Excited About Non-Fiction
- Great Teaching and the Common Core
- IMSA Professional Learning Day
- In Defense of Read Alouds
- Increasing Student Motivation and Engagement through Culturally Responsive Teaching
- Kane/DuPage Library Institute Day Support Staff
- Kane County School Nurses: Do You Know What is Happening at the ISBE, Update from School Nurse Consultant. What is Happening with Communicable Diseases at the KCHD?
- Math Common Core
- Middle School Language Arts (SD 129 Only)
- My Illinois Plate
- Permission to Forget
- Protecting Students/Teachers After Sandy Hook (All grades)
- Schools Respond to Family Violence
- Understanding & Planning for School Bomb Incidents
- Utilizing Questions: Techniques to Improve Your Instruction
- Where the Wild Things Art IV: Create Yourself
- Woodworking Machine Safety & Maintenance and Certification
- Writing to Get to the Core - CID118-13
- 2011-Reading Street-Differentiating Instruction Grades K-4, English & Spanish (Dist. 129 Only)

## ***Other Professional Development Offerings***

### Educational Strategies and General

- Advanced Placement Professional Development (Dist. U-46)
- Preparing Students for the New PARCC ELA Assessment
- Student Growth Professional Development for the Principal Evaluation Process

### ETC and Career Awareness

- Making Work Matter 21<sup>st</sup> Century (OEDC5198)
- Tech Integration Common Core & CTE (OEDC 5254)

### Language Arts/Reading/Writing

- Crafting Effective Common Core Literacy Assessment
- RtI Workshops
- Reading Leaders Network Meetings
- Learning Leaders Network Meetings
- SSOS Coach Meetings

### Math and Science

- ISBE Fall Regional Math Common Core Conference
- Moving Ahead with the Common Core Math Standards
- ELA Core Curriculum Standards



## **Gifted Education Seminar**

The Kane County Regional Office of Education has developed and supported an ongoing gifted networking system for districts serving gifted and talented students. Teachers of gifted and talented students meet frequently throughout the school year at the ROE to share expertise and resources. The ROE hosts gifted training seminars for teachers throughout the school year and during the summer.

The seminar requires teachers to meet for six days (45 hours) to deepen their understanding of how to teach and reach gifted and talented students. The goal is to assist teachers in creating an environment that identifies gifted and talented students, addresses diverse needs, and measures student growth in the classroom. During the 2012-2013 school year, two Gifted Education Seminars were offered throughout Kane County for 40 teachers.

## **Educator of the Year Awards**

The 38<sup>th</sup> Annual Educator of the Year Awards Banquet was held at the Q Center in St. Charles on May 3, 2013. This awards banquet provides an opportunity to honor outstanding members of the education profession in Kane County and promote awareness of the quality education being provided in our schools. Special recognition is also given to those retiring from education.

Local nominating committees consisting of teachers and administrators nominate educators throughout the county. Those nominated are seen as having the respect and admiration of students, parents, and co-workers. They play active and useful roles in their communities and schools, often distinguishing themselves as leaders.

Those honored represent the dedicated service found in all of the staff throughout Kane County. This program has received enthusiastic support from regional educators, and several Kane County award recipients have been selected by the Illinois State Board of Education as outstanding teachers in Illinois.

The dinner honored 32 distinguished educators with plaques of recognition. Those who received awards of distinction were:

<u>Award</u>	<u>Name</u>	<u>District</u>
Educator of the Year	Anette Bliss	District 301
Associate Educator of the Year	Jodi Lynn Eppenstein	District 131
Associate Educator of the Year	Julie A. Voss	District 300
Elementary Educator of the Year	Lori DeRaedt	District 301
Middle School Educator of the Year	Joshua Ransler Horton	District 300
Middle School Educator of the Year	Patricia Jean Reader	District 302
High School Educator of the Year	Lisa S. Meister	District 304
High School Educator of the Year	Thomas Gene Straiker	District 303
Administrator of the Year	Kris Weiss	District 302
Support Staff Award	Steven W. Downen	District 303
Support Staff Award	Susan J. Fortner	District U-46

## **Positive Behavior Interventions and Support (PBIS)**

The 2012-13 school year was the 12<sup>th</sup> consecutive year that the PBIS project has been supported by the Kane County Regional Office of Education. PBIS is a process that over 1,600 schools in 365 Illinois school districts have put in place to help improve student behavior. Students are more likely to learn in schools where the vast majority follow school rules and respond to the efforts of the principal and teachers to improve student conduct. The Kane County Regional Office of Education provides training to teachers and administrators in schools that are interested in using the PBIS model to improve school climate and the behavior of their students.

Schools that adopt the PBIS process meet the new school standards required of all schools that are spelled out in the recent federal Individuals with Disabilities Education Act (IDEA). The IDEA law requires schools to increase their efforts to improve student behavior and academic performance in reading and math. The Regional Office of Education provides training and support for 105 schools that have adopted the PBIS model in our region. Approximately 60,000 Kane County students benefit from the PBIS process in their schools. During the past year, the ROE has provided PBIS training for 425 educators.

### **PBIS offerings**

- C100: New Coaches Orientation: Nuts and Bolts
- C200: Evaluation Tools, On-Line systems, and Data-Based Decision Making
- District PBIS Team Leadership Meeting D100
- Administrator Academy #1147-PBIS: An RTI Process
- Administrator Academy #1241-PBIS Systems of Support: Focusing on Tier 2/Secondary and Tier 3/Tertiary
- Administrator Academy #1027-PBIS: Tier 1 Universal
- Bully Prevention Training (“Expect Respect” national curriculum)
- Classroom Management Training
- N100: Coaches Network Meeting
- N100: SWIS/CICO Refresher Training
- PBIS N100: Monthly Coaches Network Meeting
- PBIS Overview - U50
- PBIS Secondary Interventions S100
- PBIS Secondary Interventions S200
- PBIS Workshop-Assessing Primary Interventions-Are They in Place?
- PBIS Workshop-Developing Your Universal System - U200
- PBIS Workshop-Developing Your Universal System - U100
- UTA300-Implementing PBIS in Your School, Tier I, Part 3
- PBIS Workshop-Introduction to Tier 3/Tertiary
- Standard Training Course T100 Moving from Tier 2 to Tier 3
- SWIS ADVANCED-Training
- SWIS Facilitator Training
- SWIS Training (building level)
- U600 Tier 1/Universal New Team Member Training

---

## **System of Support, SSOS Area 1-C (Federal NCLB)**

No Child Left Behind was signed into law January 8, 2002. The overall purpose of the law is to ensure that each child in America is able to meet the high learning standards of the state where he or she lives. To help schools and districts meet this goal, the law provides a blend of requirements, incentives, and resources. State and federal law requires that technical assistance or a system of support be established by the State to help schools improve academic performance.

The Kane County Regional Office of Education has created partnerships between schools in “status” (not making adequately yearly progress) and the Regional Service Provider (RESPRO) Area 1-C. Through this partnership, schools are supported in establishing and sustaining learning communities, utilizing student data, alignment of curriculum to learning standards, and maintaining orderly and safe environments.

The Kane County ROE provides the following support to schools in status:

- materials to enhance teaching & learning
- workshops in reading and math
- curriculum mapping
- book studies on best practices
- test taking strategies
- ELL networking opportunities
- multiple intelligences & learning styles
- brain research
- leadership development
- designing formative assessments
- alternative instructional strategies
- differentiated learning strategies for the content area
- KeyTrain

During the 2012-2013 school year SSOS coaches worked with four districts identified as “in status” to design and sustain professional development opportunities to increase student achievement and align with district improvement plans.

# School Safety & Security (105 ILCS 5/3-14.20)

---

Contact Person: Dr. Mark Klaisner, Assistant Superintendent, [mklaisner@kaneroe.org](mailto:mklaisner@kaneroe.org)

## **Health and Life Safety**

All public school buildings and school-related buildings, including temporary/mobile classrooms, in the Kane County Regional Office of Education jurisdiction are inspected annually to assure compliance with the standards necessary to ensure the health and safety of public school students in Illinois, according to “Building Specifications for Health and Safety in Public Schools.” In 2012-2013 the ROE completed 365 HLS inspections. Annual inspection results from each building are available at the ROE. As required by law, a record of the annual inspection is sent to the president of the school board and a summary is filed annually with the State Board of Education. In addition, results from required State Fire Marshall inspections are reported through the ROE to the school districts and the state.

Every 10 years, each public building must be resurveyed for continued compliance by an architect or engineer licensed in the State of Illinois. The “Safety Survey Report” lists any items necessary to bring the building into full and continual compliance. Upon completion of outlined work, compliance is verified by the district and a licensed architect or engineer in a report filed with the ROE, and the building is awarded a certificate of compliance.

The ROE is also responsible, through the Regional Superintendent of Schools, for statutory compliance with established standards in the construction, remodeling and demolition of public school buildings. The Regional Superintendent assures school board approval of construction plans, review of construction plans for code compliance, issuance of the building permit, and upon review, issuance of school occupancy permits. Furthermore, the Regional Superintendent assures code compliance for temporary/mobile classroom units throughout the region in cooperation with licensed architects or engineers retained by local school districts. Records of all amendments and construction information are kept on file at the ROE.

## **School Health/Wellness Team**

Since early 2009, the school health/wellness team network, with representation from the nine public school districts, the ROE and guests from the Kane County Health Department has met monthly during the school year to review health and wellness issues. Representatives share problems, possible solutions and resources, as well as successes. Initially the network focused on identifying and listing the many different programs in the districts that impact the health and wellness of students and staff. The existence of the health/wellness team network was very helpful when concern about the H1N1 Virus, commonly known as the “Swine Flu” emerged. The network also spent time discussing and brainstorming about involvement in the Kane County “Fit Kids 2020” program.

## School Safety & Security Team

*“Children  
can’t learn  
if they are  
worried  
about their  
safety.”*

Beginning in September 2007, the school safety/security team network, with representation from the nine public school districts and the ROE has met monthly during the school year to review school safety - security issues, plans, procedures and practices. Representatives share successes, problems, possible solutions and resources. Outside resources, including the Kane County Sheriff’s Office, the FBI, and security consulting firms have been utilized to foster knowledge and understanding of safety issues. The network focuses on making sure all students and staff members are prepared for emergency situations. The safety/security team stresses that law enforcement first responders and the administration of all schools must collaborate to prepare and practice for emergency situations. Training has been provided to address awareness and prevention practices of school safety issues.

## Facility Managers Network

The State of Illinois has designated the Regional Office of Education as the Authority Having Jurisdiction (AHJ) over public schools in regard to Health/Life Safety. Regional Offices of Education have the authority and responsibility to inspect school construction and building/facility maintenance to assure that those facilities are safe and secure for school children and staff.

The Kane County Facility Managers Network was created in September 2008 to foster communication, cooperation and collaboration among the nine school districts and the Regional Office of Education. Attendees include school district facility managers, school district construction projects managers, architects, consultants and ROE staff. Meetings assist participants to be prepared to assure that construction projects meet all relevant codes prior to application for occupancy. The ROE conducts annual HLS inspections with facility managers and principals to assure that the maintenance of all school buildings and facilities meets code and provides a safe and secure surrounding for children and staff. All have an opportunity to learn what others are doing and participants may share procedures, resources, and successes in their districts.

# Technology

---

Contact Person: Phil Morris, Director of Technology, [pmorris@kaneroe.org](mailto:pmorris@kaneroe.org)

## ***Area One West Learning Technology Center (105 ILCS 5/2-3.117)***

The Illinois State Board of Education (ISBE) established the Learning Technology Center program for the purpose of providing coordinated, statewide support and infrastructure that assists school districts in planning for, implementing, assessing results and educating school staff in the use of technology and telecommunications in curricular, instructional and administrative functions. More information on the Learning Technology Center program can be found at <http://www.isbe.net/curriculum/elearning/default.htm>.

The Kane County Learning Technology Center has provided the following services using funding from the ISBE.

- Attending statewide meetings
- Facilitated or assisted schools with Technology Planning
- Assisted districts with funding and training for reading/math initiatives using technology
- Provide internet safety training, including parent presentations (<http://www.isafe.org>)
- Help schools with the monitoring, management, and troubleshooting of their WANs
- Assist schools with E-Rate applications to the federal government (<http://www.sl.universalservice.org>)
- Provide support and training for online resources available to all Kane County schools.

## ***Fingerprinting (105 ILCS 5/10-21.9)***

The Regional Office of Education provides fingerprinting services for all our public school districts. The Illinois School Code requires all new employees to have both a State and FBI criminal background check. Last year, approximately 4,000 people were fingerprinted. In 2008, the addition of private schools occurred due to changing legislation. The electronic submission of fingerprints allows the ROE to typically receive results within 24-hours, so a school district can begin employment immediately.

The ROE also partners with Kane County government to fingerprint their new employees throughout the year.

### ***Geographic Information System (GIS) (105 ILCS 5/7-6)***

The Kane County Regional Office of Education offers school districts the opportunity to request the assistance of its geographic information system (GIS). The GIS allows for the creation of custom maps and geographic analyses for school districts. GIS has proven to be a useful tool for Kane County school districts in the matter of attendance boundaries.

The software allows a school district to calculate student populations in a geographic area. Attendance areas can be broken down, allowing for smaller geographic units of measurement and the presentation of a variety of school boundary scenarios. GIS allows school districts to create and take advantage of updatable maps to address geographic concerns. Some transportation concerns such as bus routes, bus stops, and hazardous roads can be represented in the GIS.

### ***Learning Technology Services (105 ILCS 5/2-3.118)***

In addition to being the Area One West Learning Technology Center, the Regional Office of Education integrates support and training in many areas of technology. A needs assessment is given during the year at monthly technology coordinator meetings. Monthly technology coordinator meetings are used to communicate information from the Illinois State Board of Education, and also allow dialogue between districts.

Learning Technology Services also provides technical support within the Regional Office of Education to maintain connectivity to the Illinois State Board of Education electronic systems including Teacher Certification, Administrators' Academy, and GED. Learning Technology Services supports the technology implementation at the Kane County Juvenile Justice Center (JJC).

During this past year the following services have been provided for school districts:

- Hosting of district and private school websites
- Hosting of over 6,000 teacher email accounts
- Filtering email accounts for spam and viruses
- Online registration for workshops with digital encryption
- Consultation for KCHRC On-Line Application
- Maintenance of LiveScan fingerprint equipment for fingerprinting of new teachers and bus drivers in Kane County
- Hosting specialized training for school districts
- Continuing support for Follett Destiny
- Coordinating Palo Alto Firewall and Filter cooperative licensing
- Coordinating United Streaming video cooperative licensing
- Maintaining the Kane County ROE website, SharePoint portal, Facebook fan page, and Twitter pages.
- Assisting SSOS coaches with technology across Kane County
- Phil Morris, Director is also on Illinois Learning Technology Purchase Program Advisory Board, Illinois Virtual School Advisory Board, and the IlliniCloud Advisory Board

# Transportation

---

Contact Person: Dr. Mark Klaisner, Assistant Superintendent, [mklaisner@kaneroe.org](mailto:mklaisner@kaneroe.org)

## ***School Bus Driver Trainings (105 ILCS 5/3-14.23)***

The Regional Office of Education is responsible for conducting the initial training that is required for all new school bus drivers prior to getting a bus permit, and the annual refresher workshop that is required in the 12-month period prior to renewing a school bus permit. Experienced drivers must take a two-hour refresher course annually, and all new drivers must take an eight-hour course in school bus driver safety and first aid, as prescribed by the Illinois State Board of Education and administered by the Kane County ROE.

The Kane County ROE provided eight Initial Bus Driver Training courses for 143 participants and 47 Refresher Trainings for over 1,246 participants.



# Finance Reports

Contact Person: Meg Fetzer, Director of Finance, [mfetzer@kaneroe.org](mailto:mfetzer@kaneroe.org)

## Certified Personnel

		DEGREES - SALARIES - EXPERIENCE - STAFF/STUDENT RATIOS							
DISTRICT		TOTAL CERTIFIED (INCLUDE PART TIME)	DOCTORS & ED SPEC/CAS DEGREE	MASTERS DEGREE	BACHELORS DEGREE	TEACHERS AIDES (INCLUDE PART TIME)	AVG. SAL. FULL-TIME CERTIFIED TEACHERS	AVG. SAL. CERTIFIED ADMIN	
U46	ELGIN	2473	43	1913	517	333	\$62,960	\$100,178	
101	BATAVIA	465	13	360	92	110	\$74,384	\$105,427	
129	AURORA WEST	910	11	738	161	248	\$102,304	\$74,637	
131	AURORA EAST	947	16	552	379	216	\$51,454	\$92,443	
300	DUNDEE	1336	48	944	344	0	\$48,645	\$94,974	
301	CENTRAL	266	9	191	66	54	\$54,937	\$100,335	
302	KANELAND	373	6	273	94	81	\$54,546	\$96,073	
303	ST CHARLES	1061	30	861	170	216	\$67,686	\$116,340	
304	GENEVA	451	16	369	66	132	\$74,375	\$107,181	
<b>TOTAL FY2013</b>		<b>8282</b>	<b>192</b>	<b>6201</b>	<b>1889</b>	<b>1390</b>	<b>\$65,699</b>	<b>\$98,621</b>	
			2.32%	74.87%	22.81%	16.78%			
<b>TOTAL FY2012</b>		<b>8140</b>	<b>178</b>	<b>6106</b>	<b>1856</b>	<b>1674</b>	<b>\$62,561</b>	<b>\$102,854</b>	
			2.19%	75.01%	22.80%	20.57%			

**Certified Personnel Continued**

DISTRICT	AVG. YRS. EXPERIENCE TEACHING IN ILLINOIS	ENROLLMENT PER CERTIFIED STAFF MEMBER FY2013	ENROLLMENT PER CERTIFIED STAFF MEMBER FY2012	TEACHER TO ADMINISTRATIVE STAFF RATIO	SUPPORT STAFF	ENROLLMENT TO SUPPORT STAFF RATIO	ENROLLMENT PER FALL HOUSING RPT FY2012
<b>U46 ELGIN</b>	13.0	16.46	16.5	15.5	2,151	18.9	40,705
<b>101 BATAVIA</b>	13.0	13.54	13.5	18.6	131	48.1	6,295
<b>129 AURORA WEST</b>	10.3	13.76	13.8	16.5	250	50.1	12,521
<b>131 AURORA EAST</b>	7.9	14.44	16.9	13.3	77	177.6	13,678
<b>300 DUNDEE</b>	11.9	15.59	15.6	12.5	429	48.5	20,825
<b>301 CENTRAL</b>	14.5	13.00	13.0	16.9	177	19.5	3,457
<b>302 KANELAND</b>	10.8	12.97	13.0	16.7	91.5	52.9	4,839
<b>303 ST CHARLES</b>	12.2	12.88	12.9	17.9	449	30.4	13,668
<b>304 GENEVA</b>	14.0	13.21	13.2	17.5	232	25.7	5,956
<b>Average</b>	<b>11.9</b>	<b>14.0</b>	<b>14.3</b>	<b>16.2</b>	<b>3,988</b>	<b>52.4</b>	<b>121,944</b>
<b>PRIOR YEAR</b>	<b>11.7</b>	<b>14.0</b>	<b>14.3</b>	<b>16.2</b>	<b>3,988</b>	<b>52.4</b>	<b>121,944</b>

**Classroom Buildings In Use- July 1, 2012 – June 30, 2013**

**CLASSROOM BUILDINGS IN USE - 7/1/12 - 6/30/13**

DISTRICT		Elementary School		Middle or Junior High School		Senior High School		Mobile Classroom		Other, Special Ed, Voc Ed, Etc.	
		FY13	FY12	FY13	FY12	FY13	FY12	FY13	FY12	FY13	FY12
U46	ELGIN	40	40	8	8	5	5	29	32	5	5
101	BATAVIA	6	6	1	1	1	1	0	0	0	0
129	AURORA WEST	10	10	4	4	1	1	6	6	2	2
131	AURORA EAST	12	12	3	3	1	1	0	0	3	6
300	DUNDEE	16	16	4	4	3	3	1	1	3	3
301	CENTRAL	4	4	2	2	1	1	0	0	0	0
302	KANELAND	4	4	1	1	1	1	0	0	1	1
303	ST CHARLES	12	12	3	3	2	2	6	6	1	1
304	GENEVA	6	6	2	2	1	1	0	0	1	1
	<b>TOTAL</b>	<b>110</b>	<b>110</b>	<b>28</b>	<b>28</b>	<b>16</b>	<b>16</b>	<b>42</b>	<b>45</b>	<b>16</b>	<b>19</b>

**Public School Enrollment – September 2012**

**FY13 Enrollment  
Enrollment - Public Schools - September 2012**

District	School	FY12	FY13	Pre-K	K-5	6-8	9-12
U46	Elgin	40,705	40,199	899	18,188	9,011	12,101
101	Batavia	6,295	6,227	82	2,697	1,484	1,964
129	West Aurora	12,521	12,580	395	5,674	2,851	3,660
131	East Aurora	13,678	14,461	753	7,165	3,162	3,381
300	Dundee	20,825	20,673	885	9,279	4,588	5,921
301	Central	3,457	3,519	45	1,606	778	1,090
302	Kaneland	4,839	4,777	67	2,263	1,098	1,349
303	St. Charles	13,668	13,414	190	5,410	3,267	4,547
304	Geneva	5,956	5,906	85	2,428	1,417	1,976
	<b>TOTAL FY13</b>		<b>121,756</b>	<b>3,401</b>	<b>54,710</b>	<b>27,656</b>	<b>35,989</b>
	<b>TOTAL FY12</b>	<b>121,944</b>		<b>2,735</b>	<b>55,418</b>	<b>27,878</b>	<b>35,913</b>

**ISBE Federal & State Revenue – Fiscal Year Ending June 30, 2013**

**ISBE FEDERAL & STATE REVENUE  
FISCAL YEAR ENDING JUNE 30, 2013**

		<b>STATE AID *</b>	<b>STATE - OTHER</b>	<b>FEDERAL</b>	<b>TOTAL</b>	<b>\$ PER ADA</b>	<b>ADA</b>
U46	ELGIN	62,826,052	34,589,157	30,096,523	127,511,733	3,544	35983.2
101	BATAVIA	2,599,683	4,141,126	671,259	7,412,068	1,255	5,903.9
129	AURORA WEST	31,526,010	12,714,342	11,084,241	55,324,592	4,687	11,803.1
131	AURORA EAST	81,514,738	13,668,421	12,035,717	107,218,876	8,558	12,528.7
300	DUNDEE	11,686,484	17,565,617	11,248,411	40,500,512	2,182	18,558.9
301	CENTRAL	1,352,792	2,747,029	385,922	4,485,743	1,380	3,250.8
302	KANELAND	1,907,393	5,120,390	595,931	7,623,714	1,782	4,278.1
303	ST CHARLES	4,908,023	9,545,322	1,661,111	16,114,456	1,313	12,274.4
304	GENEVA	2,056,436	3,470,241	486,870	6,013,547	1,108	5,428.0
							110009.12
	<b>TOTAL FY2013</b>	<b>200,377,611</b>	<b>103,561,645</b>	<b>68,265,986</b>	<b>372,205,241</b>	<b>3,383</b>	
	<b>TOTAL FY2012</b>	<b>202,942,515</b>	<b>107,975,873</b>	<b>66,609,078</b>	<b>377,527,466</b>	<b>3,406</b>	
	<b>CHANGE</b>	<b>-1.3%</b>	<b>-4.3%</b>	<b>2.4%</b>	<b>-1.4%</b>	<b>-0.7%</b>	

\*\* Additional Financial and District information may be obtained at [www.isbe.net](http://www.isbe.net)

# FY13 Annual Report Index

---

<b>A</b>	
Area One West Learning Technology Center ...	30
Association for Individual Development (AID) ..	20
<b>B</b>	
Budget – County Portion .....	13
Business Office .....	13
<b>C</b>	
Career and Technical Education Partnership ...	18
Career Cruising .....	18
Certification .....	15
Certified Personnel .....	33
<b>D</b>	
Dropout Intervention Program.....	12
<b>E</b>	
Educator of the Year Awards.....	25
<b>F</b>	
Facility Managers’ Network.....	29
Finance Reports.....	33
Fingerprinting .....	30
<b>G</b>	
General Educational Development (GED) .....	11
Geographic Information System (GIS) .....	31
Gifted Education Seminar.....	25
<b>H</b>	
Health and Life Safety.....	28
Home Schooling.....	12
Homeless Education Program .....	16
<b>I</b>	
Illinois Administrators’ Academy.....	22
Institute Day .....	23
Institute Fund Report .....	14
ISBE Federal & State Revenue .....	36
<b>J</b>	
Juvenile Justice Center .....	12
<b>K</b>	
Kane County Human Resources Consortium (KCHRC) .....	19
Kane ROE Equal Chance Program .....	16
<b>L</b>	
Learning Technology Services.....	31
Legal Reference .....	7
Legislative Development of the Office .....	7
<b>M</b>	
Master/Doctorate Degree Programs.....	19
Mission .....	4
<b>N</b>	
Networks .....	17
<b>O</b>	
Operation Snowball.....	19
Organizational Chart.....	6
Other Professional Development Offerings ....	24
<b>P</b>	
Partnerships.....	18
Positive Behavior Interventions and Support (PBIS) .....	26
Professional Development.....	21
Public School Enrollment.....	35
<b>R</b>	
Regional Board of School Trustees .....	7
Regional Safe Schools Program (RSSP) .....	11
Regional Superintendents of Schools .....	9
<b>S</b>	
School Bus Driver Trainings .....	32
School District Boundary Map .....	5
School District Information.....	4
School Health/Wellness Team.....	28
School Safety & Security.....	28
School Safety & Security Team .....	29
Spelling Bee .....	20
Strategic Planning .....	20
Superintendent of Educational Service Region .	8
System of Support, RESPRO Area 1-C.....	27
<b>T</b>	
Technology .....	30
Transportation .....	32
Truancy Prevention/Intervention Program .....	10